

NOTES:

1. UNLESS OTHERWISE SPECIFIED, ALL DIMENSIONS ARE IN INCHES. DIMENSIONS WITHIN BRACKETS [] ARE IN MILLIMETERS.
2. RECOMMENDED CLEARANCE FOR AIR FLOW AND SERVICEABILITY : LEFT SIDE 30" [762] , RIGHT SIDE 18" [457.2] AND BACK OF SYSTEM 18" [457.2].

LTI Power Systems, Inc.

TEL. (440) 327-5050

10800 MIDDLE AVE. BLDG. B ELYRIA, OHIO

PROUPS B1250 ENCLOSURE

20KVA, 125VDC

WEIGHT: 1,600 LBS. (726.4 kg)

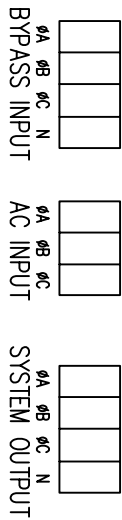
LTI - PROUPS

SHEET 1 OF 1

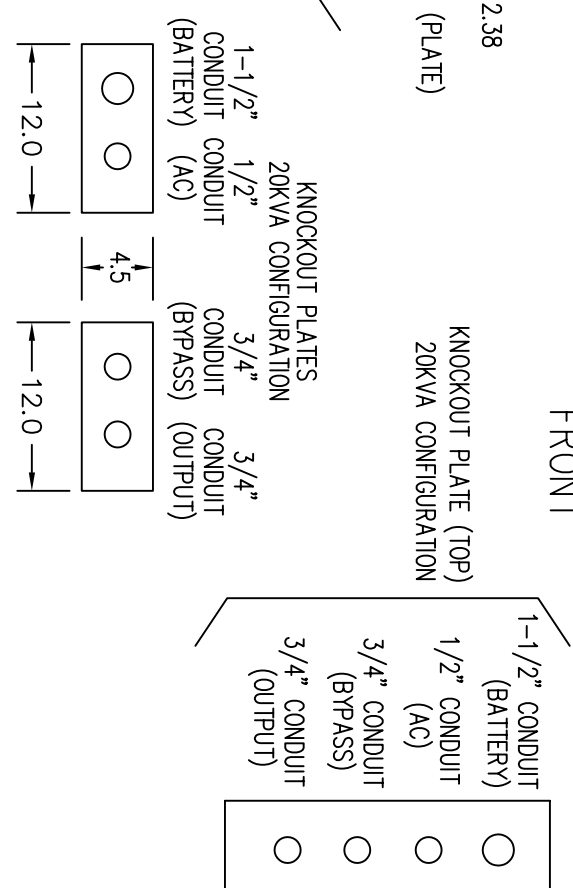
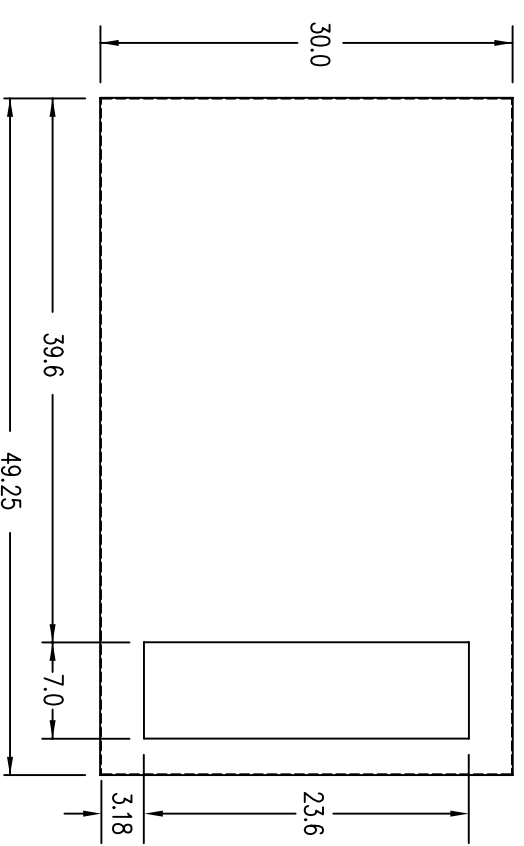
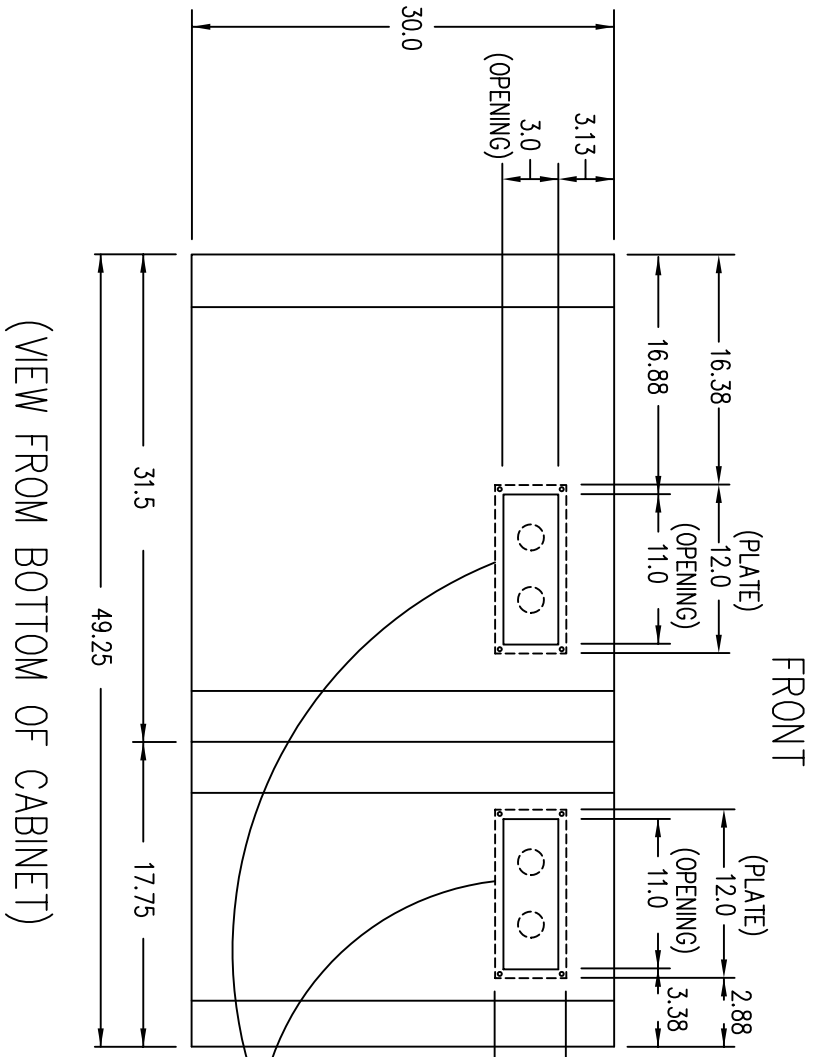
CAD DWG NAME: B1250CAB_20_125VDC

REV.

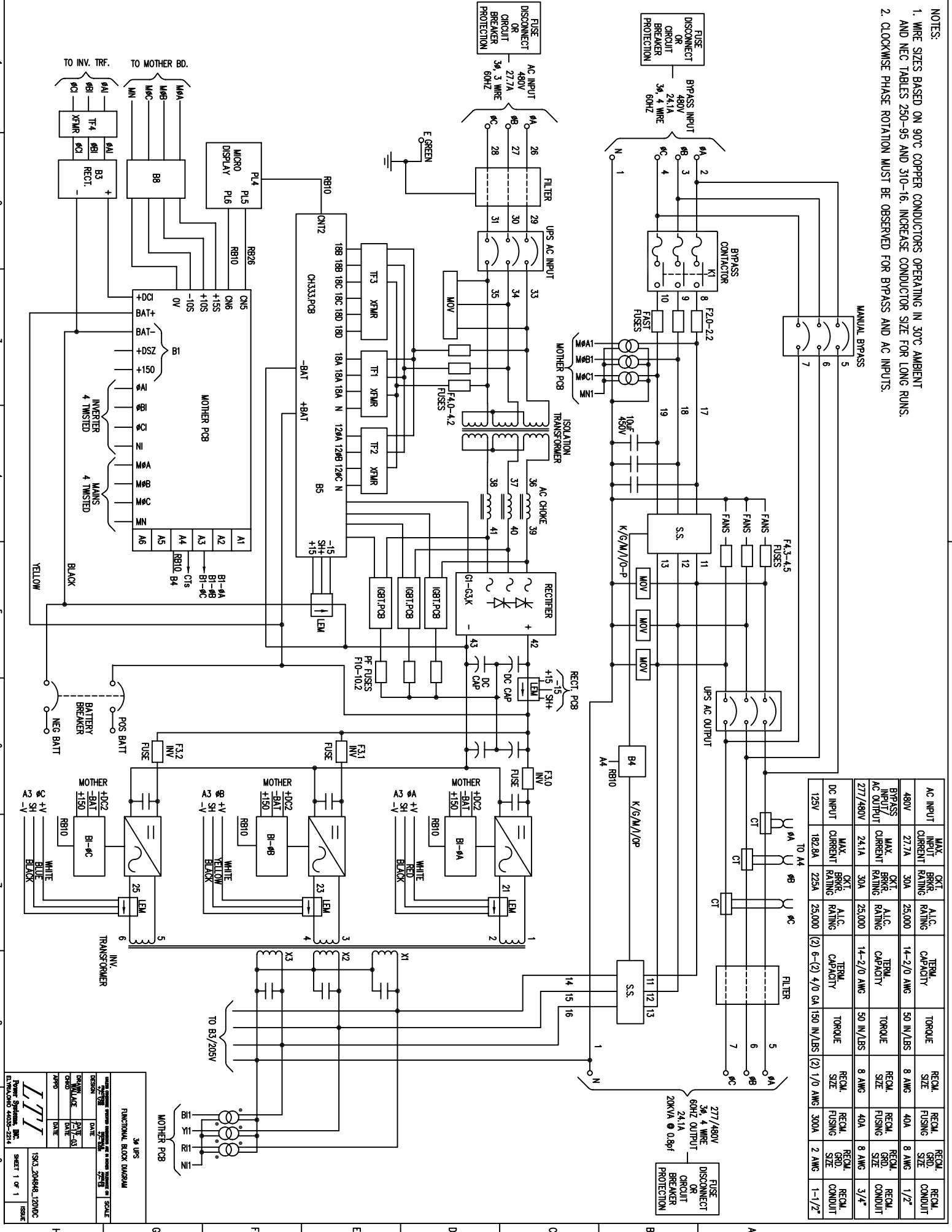
TERMINATION CONFIGURATION (BOTTOM, FRONT)
 TERMINAL BLOCK CAPACITY : 14 TO 2/0 AWG



NOTE: ALL DIMENSIONS ARE IN INCHES UNLESS OTHERWISE SPECIFIED.
 WHEN USING TOP CABLE ENTRY, ROUTE WIRES DOWN ALONG RIGHT SIDE OF CABINET
 TO BOTTOM, FRONT TERMINAL BLOCK LOCATION.



- NOTES:
1. WIRE SIZES BASED ON 90°C COPPER CONDUCTORS OPERATING IN 30°C AMBIENT AND NEC TABLES 250-95 AND 310-16. INCREASE CONDUCTOR SIZE FOR LONG RUNS.
 2. CLOCKWISE PHASE ROTATION MUST BE OBSERVED FOR BYPASS AND AC INPUTS.



AC INPUT	MAX. INPUT CURRENT	CT. RATING	A.I.C. RATING	TERM. CAPACITY	TORQUE	RECM. SIZE	RECM. FUSING	RECM. GND. SIZE	RECM. CONDUIT
480V	27.7A	30A	25,000	14-2/0 AWG	50 IN/LBS	8 AWG	40A	8 AWG	1/2"
BYPASS INPUT/AC OUTPUT	MAX. BRK. RATING	CT. RATING	A.I.C. RATING	TERM. CAPACITY	TORQUE <td>RECM. SIZE</td> <td>RECM. FUSING</td> <td>RECM. GND. SIZE</td> <td>RECM. CONDUIT</td>	RECM. SIZE	RECM. FUSING	RECM. GND. SIZE	RECM. CONDUIT
277/480V	24.1A	30A	25,000	14-2/0 AWG	50 IN/LBS	8 AWG	40A	8 AWG	3/4"
DC INPUT	MAX. CURRENT	CT. RATING	A.I.C. RATING	TERM. CAPACITY	TORQUE <td>RECM. SIZE</td> <td>RECM. FUSING</td> <td>RECM. GND. SIZE</td> <td>RECM. CONDUIT</td>	RECM. SIZE	RECM. FUSING	RECM. GND. SIZE	RECM. CONDUIT
125V	182.8A	225A	25,000	(2) 6-(2) 4/0 GA	150 N/LBS	(2) 1/0 AWG	300A	2 AWG	1-1/2"

3ø UPS
FUNCTIONAL BLOCK DIAGRAM

DATE: 2/27/88
DRAWN BY: J. W. B. / J. W. B.
CHECKED BY: J. W. B. / J. W. B.
ZPPD / DATE: /

Power Systems, Inc.
Elyria, Ohio 44035-2214

ISS: 3.0
1533.20848.1200DC
SHEET 1 OF 1
ISSUE