

NOTES:

1. UNLESS OTHERWISE SPECIFIED, ALL DIMENSIONS ARE IN INCHES. DIMENSIONS WITHIN BRACKETS [] ARE IN MILLIMETERS.
2. RECOMMENDED CLEARANCE FOR AIR FLOW AND SERVICEABILITY : LEFT SIDE 30" [762] , RIGHT SIDE 18" [457.2] AND BACK OF SYSTEM 6" [152.4].

LTI Power Systems, Inc.

TEL. (440) 327-5050

10800 MIDDLE AVE. BLDG. B ELYRIA, OHIO

PROUPS B1250 ENCLOSURE

30KVA, 125VDC UPS

WEIGHT: 1,700 LBS. (771.8 kg)

LTI - PROUPS

SHEET 1 OF 1

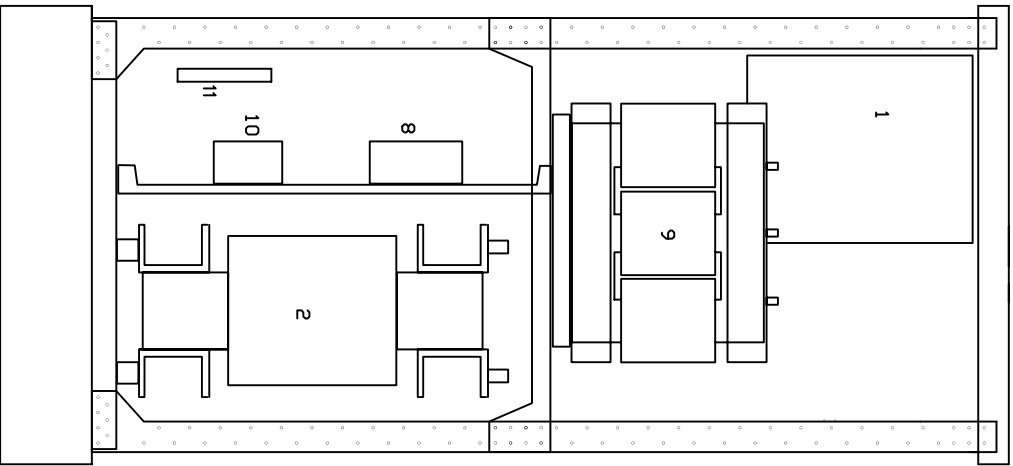
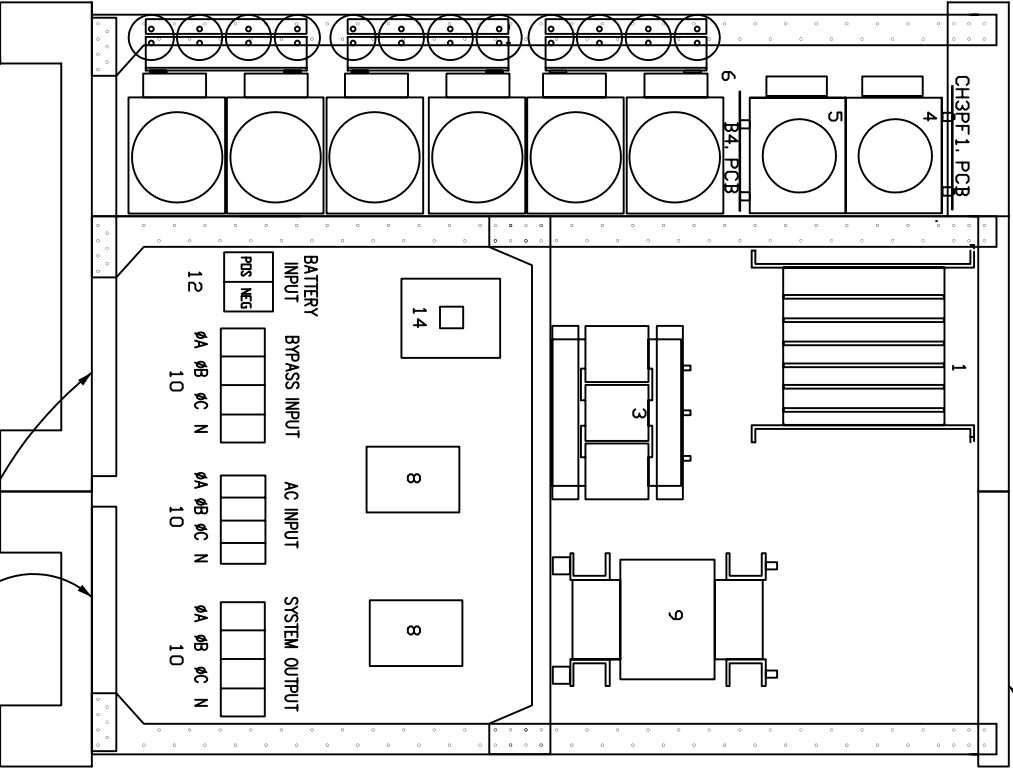
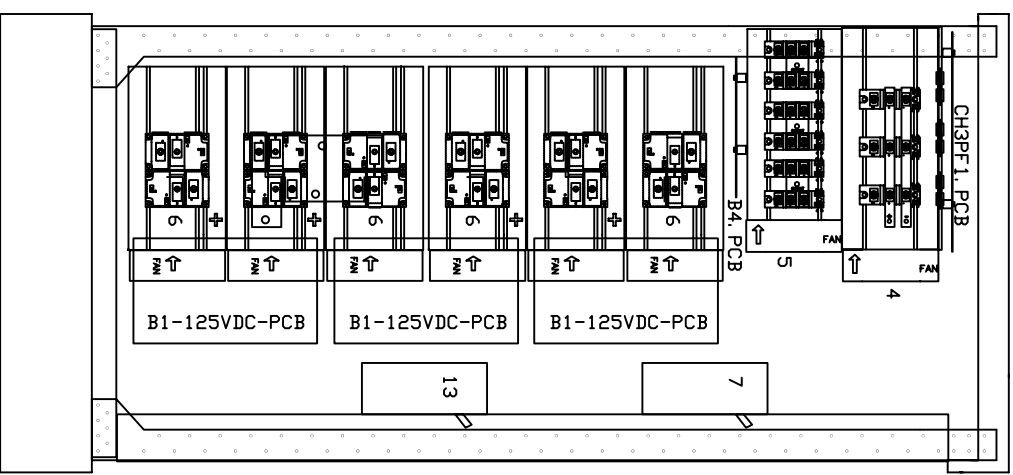
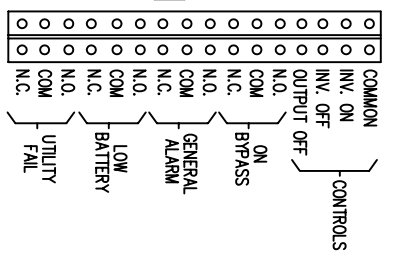
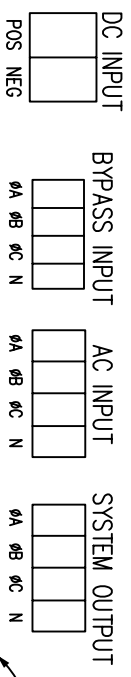
CAD DWG NAME: B1250CAB_30_125VDC_UPS

REV.

- 1 - ELECTRONICS RACK
- 2 - INVERTER TRANSFORMER
- 3 - AC CHOKE
- 4 - RECTIFIER POWER PACK
- 5 - STAT. SWITCH POWER PACK
- 6 - INVERTER POWER PACK
- 7 - CIRCUIT BREAKERS
- 8 - PFI FILTERS
- 9 - CHARGER ISOLATION TRANSFORMER
- 10 - INPUT/OUTPUT TERMINALS
- 11 - RELAY INTERFACE TERMINALS
- 12 - BATTERY INPUT TERMINALS
- 13 - BATTERY CIRCUIT BREAKER
- 14 - CONTACTOR

TERMINATION CONFIGURATION (BOTTOM, FRONT)
 TERMINAL BLOCK CAPACITY : 2/0 TO 14 AWG. (TORQUE: 50 IN. LBS.)
 TERMINAL BLOCK CAPACITY (DC INPUT) : (500 MCM TO 4 AWG.) (TORQUE: 275 IN. LBS.)

RELAY INTERFACE TERMINATIONS
 WIRE RANGE: 14 TO 20 AWG.
 RELAYS RATED 1A @ 24VDC, 0.5A @ 120VAC RESISTIVE



LEFT

FRONT

RIGHT

CONDUIT ENTRY THRU GLAND PLATES

CONDUIT ENTRY THRU TOP GLAND PLATE

LTI Power Systems, Inc.

MK333 30KVA, 125VDC ASSEMBLY

LTI-PROUPS

TEL. (440) 327-5050

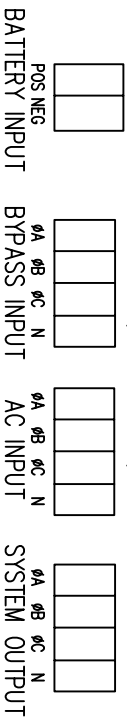
10800 Middle Ave. Bldg. B Elyria, Ohio 44035

CAD DWG NAME: 30K333-125VDC_FORMC

REV. 1

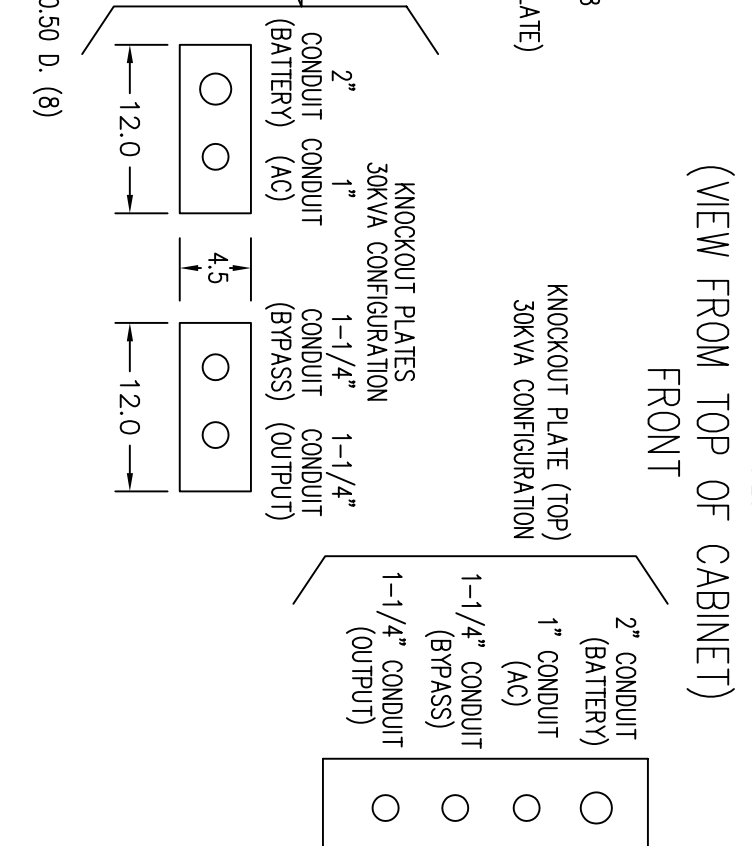
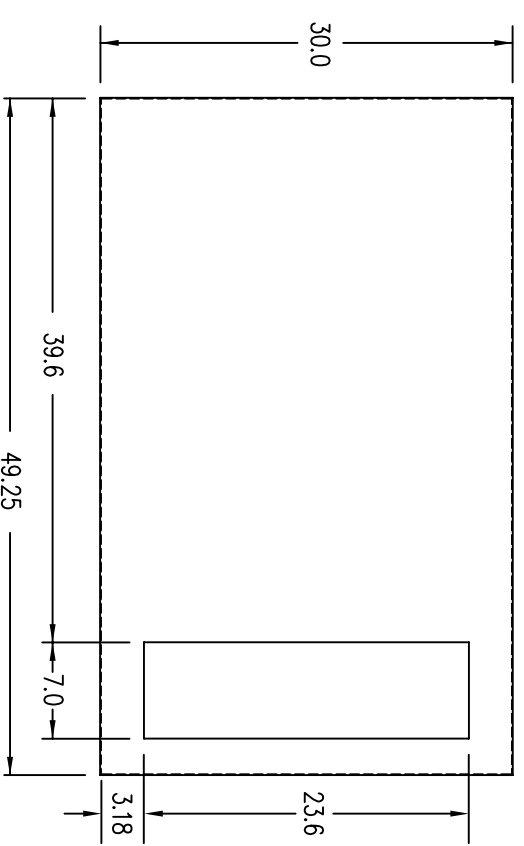
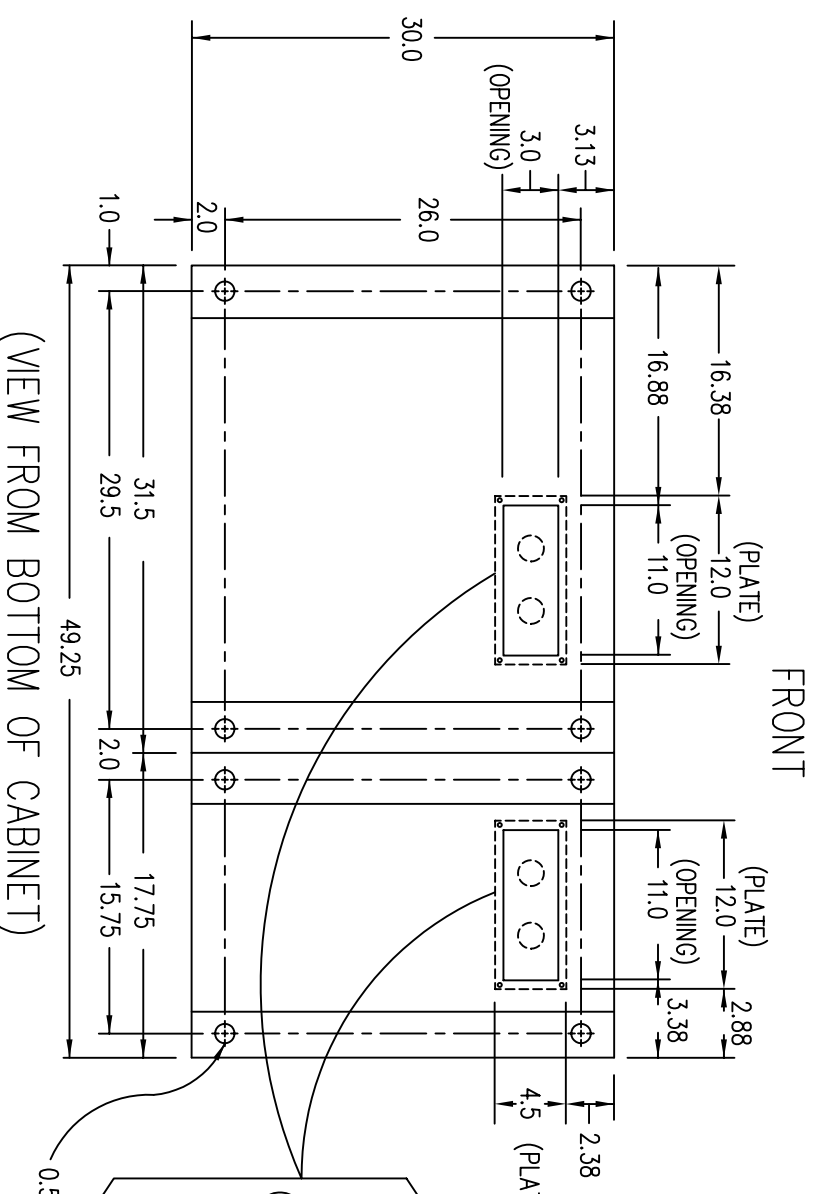
TERMINATION CONFIGURATION (BOTTOM, FRONT)

TERMINAL BLOCK CAPACITY (AC/BYPASS INPUT/OUTPUT) : 14 TO 2/0 AWG
 TERMINAL BLOCK CAPACITY (BATTERY INPUT) : 350 MCM TO 6 AWG

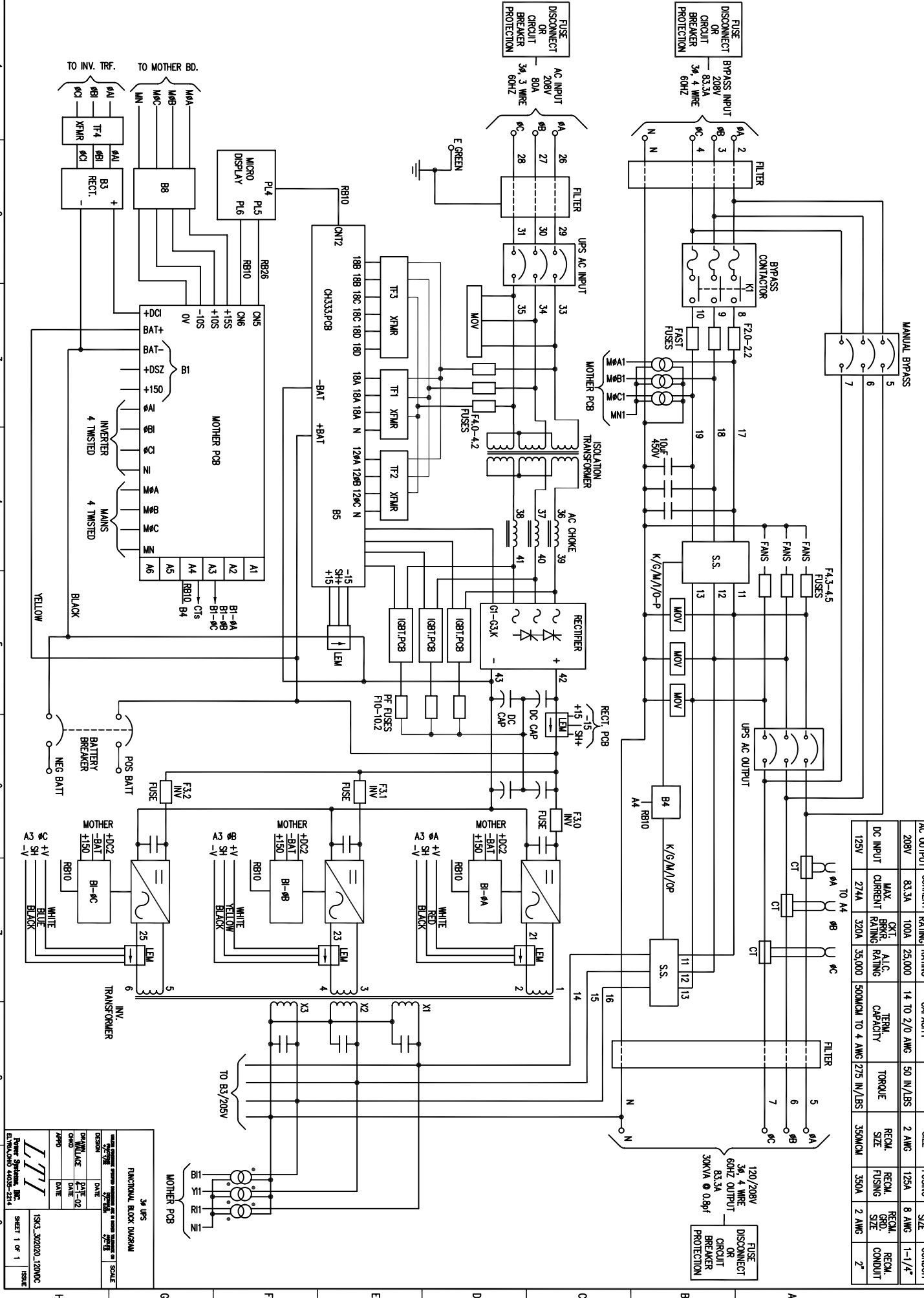


NOTE: ALL DIMENSIONS ARE IN INCHES UNLESS OTHERWISE SPECIFIED.

WHEN USING TOP CABLE ENTRY, ROUTE WIRES DOWN ALONG RIGHT SIDE OF CABINET TO BOTTOM, FRONT TERMINAL BLOCK LOCATION.



- NOTES:
1. WIRE SIZES BASED ON 90°C COPPER CONDUCTORS OPERATING IN 30°C AMBIENT AND NEC TABLES 250-95 AND 310-16. INCREASE CONDUCTOR SIZE FOR LONG RUNS.
 2. CLOCKWISE PHASE ROTATION MUST BE OBSERVED FOR BYPASS AND AC INPUTS.



| AC INPUT | MAX. INPUT CURRENT RATING | OKT. BRKR. RATING | A.I.C. RATING | TERM. CAPACITY | TORQUE | RECOM. SIZE | RECOM. FUSING | RECOM. GND. SIZE | RECOM. CONDUIT |
|------------------------|---------------------------|--------------------|----------------|------------------|-------------|---------------|------------------|------------------|----------------|
| 208V | 80A | 100A | 25,000 | 14 TO 27.0 AWG | 50 IN./LBS | 2 AWG | 125A | 8 AWG | 1" |
| BYPASS INPUT/AC OUTPUT | MAX. BRKR. RATING | OKT. A.I.C. RATING | TERM. CAPACITY | TORQUE | RECOM. SIZE | RECOM. FUSING | RECOM. GND. SIZE | RECOM. CONDUIT | |
| 208V | 83.3A | 100A | 25,000 | 14 TO 27.0 AWG | 50 IN./LBS | 2 AWG | 125A | 8 AWG | 1-1/4" |
| DC INPUT | MAX. CURRENT RATING | OKT. A.I.C. RATING | TERM. CAPACITY | TORQUE | RECOM. SIZE | RECOM. FUSING | RECOM. GND. SIZE | RECOM. CONDUIT | |
| 125V | 274A | 320A | 35,000 | 500CMIL TO 4 AWG | 275 N./LBS | 350CMIL | 350A | 2 AWG | 2" |

3ø UPS
FUNCTIONAL BLOCK DIAGRAM

DATE: 2/27/88
DRAWN BY: J. J. J. / P. J. J.
CHECKED BY: J. J. J. / P. J. J.
DATE: 2/27/88

Power Systems, Inc.
1533, 302020, 1200DC
EVANSTON, ILL. 60201-2214

SHEET 1 OF 1