

NOTES:

1. UNLESS OTHERWISE SPECIFIED, ALL DIMENSIONS ARE IN INCHES. DIMENSIONS WITHIN BRACKETS [] ARE IN MILLIMETERS.
2. RECOMMENDED CLEARANCE FOR AIR FLOW AND SERVICEABILITY : LEFT SIDE 30" [762] , RIGHT SIDE 18" [457.2] AND BACK OF SYSTEM 6" [152.4].

LTI Power Systems, Inc.

TEL. (440) 327-5050

10800 MIDDLE AVE. BLDG. B ELYRIA, OHIO

PROUPS B1250 ENCLOSURE

30KVA, 125VDC UPS

WEIGHT: 1,700 LBS. (771.8 kg)

LTI - PROUPS

SHEET 1 OF 1

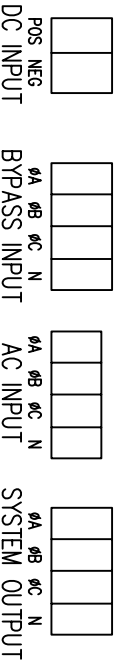
CAD DWG NAME: B1250CAB_30_125VDC_UPS

REV.

TERMINATION CONFIGURATION (BOTTOM, FRONT)

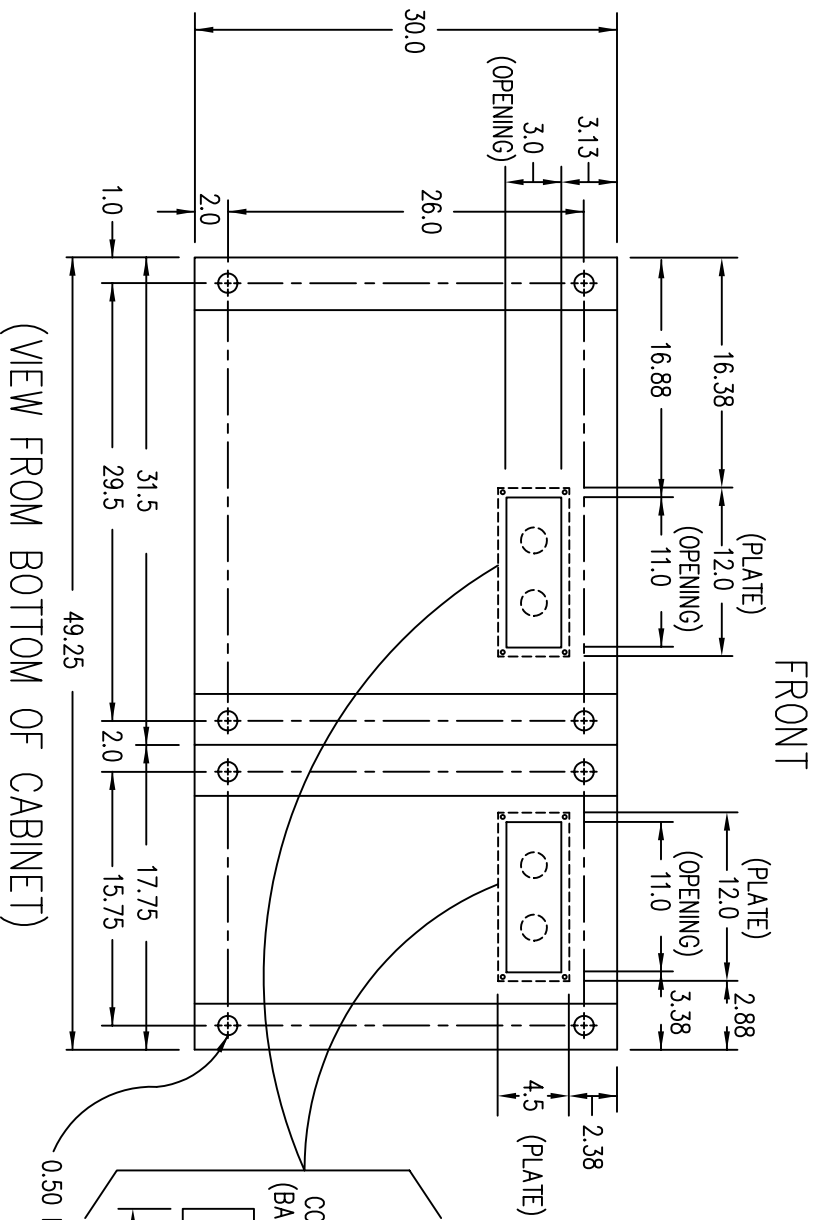
TERMINAL BLOCK CAPACITY (AC INPUT/BYPASS INPUT/OUTPUT) : 14 TO 2/0 AWG

TERMINAL BLOCK CAPACITY (DC INPUT) : 500 MCM TO 4 AWG



NOTE: ALL DIMENSIONS ARE IN INCHES UNLESS OTHERWISE SPECIFIED.

WHEN USING TOP CABLE ENTRY, ROUTE WIRES DOWN ALONG RIGHT SIDE OF CABINET TO BOTTOM, FRONT TERMINAL BLOCK LOCATION.

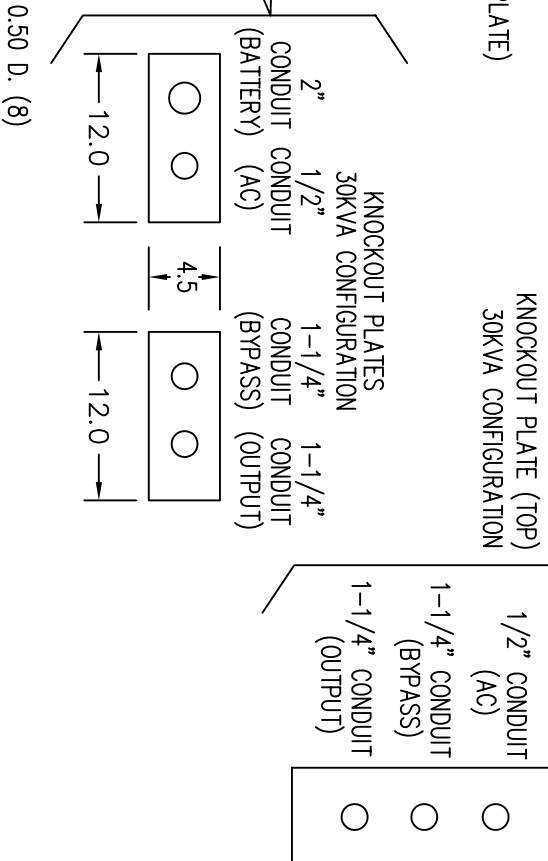
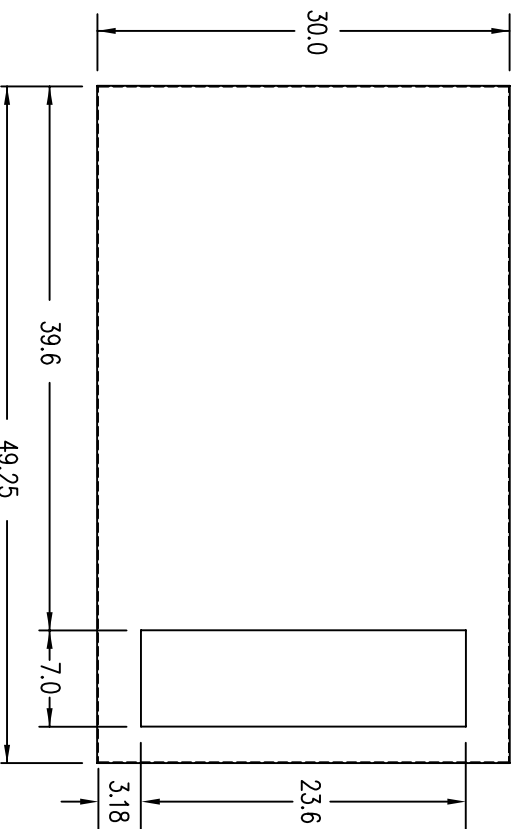


FRONT

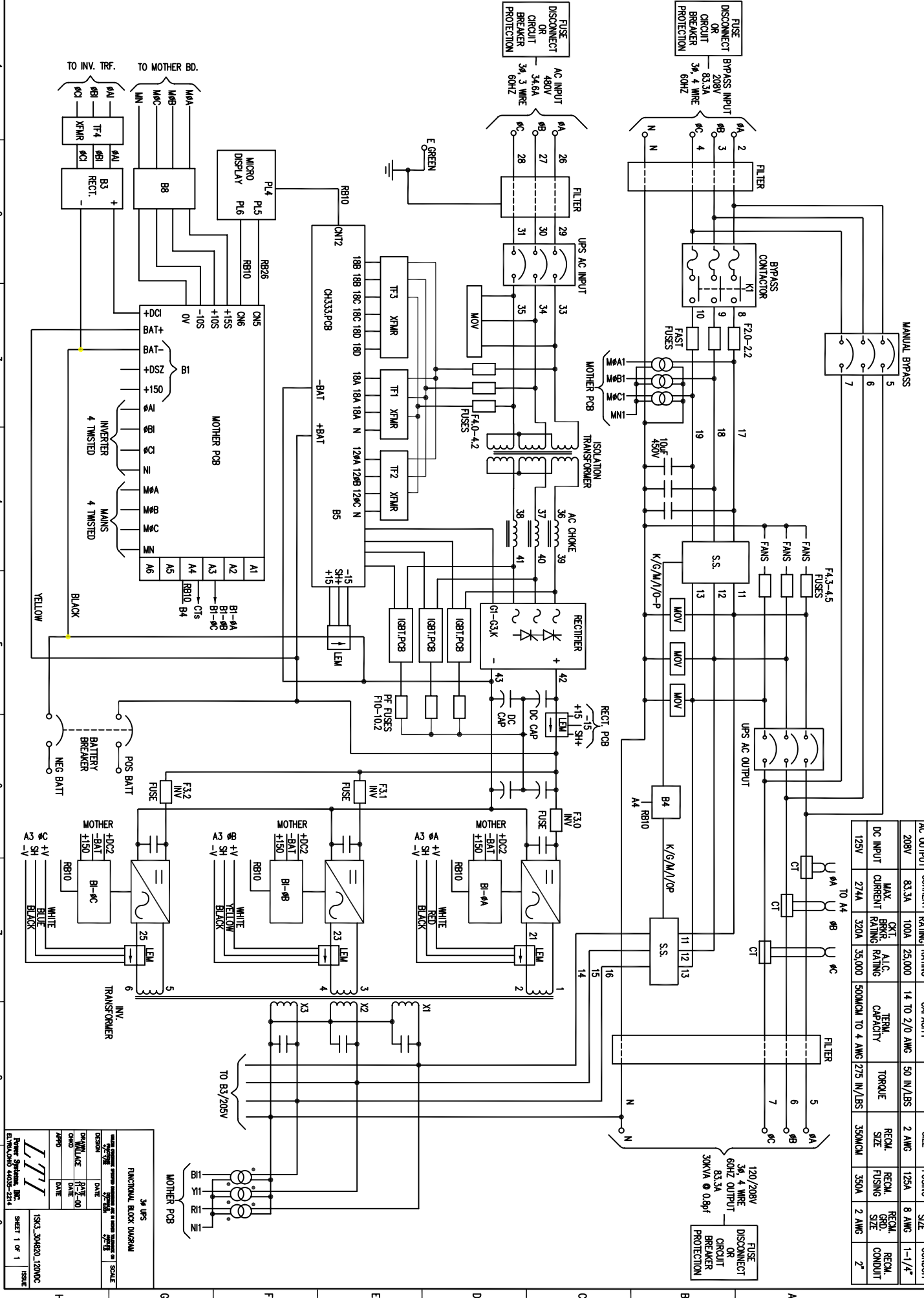
(PLATE)
(OPENING)

(VIEW FROM TOP OF CABINET)

FRONT



- NOTES:
1. WIRE SIZES BASED ON 90°C COPPER CONDUCTORS OPERATING IN 30°C AMBIENT AND NEC TABLES 250-95 AND 310-16. INCREASE CONDUCTOR SIZE FOR LONG RUNS.
 2. CLOCKWISE PHASE ROTATION MUST BE OBSERVED FOR BYPASS AND AC INPUTS.



AC INPUT	MAX. INPUT CURRENT	CT. BRK. RATING	A.L.C. RATING	TERM. CAPACITY	TORQUE	RECOM. SIZE	RECOM. FUSING	RECOM. GND. SIZE	RECOM. CONDUIT
480V	34.6A	40A	25,000	14 TO 27.0 AWG	50 IN./LBS	8 AWG	50A	8 AWG	1/2"
BYPASS INPUT/AC OUTPUT	MAX. BRK. CURRENT RATING	CT. BRK. RATING	A.L.C. RATING	TERM. CAPACITY	TORQUE <td>RECOM. SIZE</td> <td>RECOM. FUSING</td> <td>RECOM. GND. SIZE</td> <td>RECOM. CONDUIT</td>	RECOM. SIZE	RECOM. FUSING	RECOM. GND. SIZE	RECOM. CONDUIT
208V	83.3A	100A	25,000	14 TO 27.0 AWG	50 IN./LBS	2 AWG	125A	8 AWG	1-1/4"
DC INPUT	MAX. CURRENT RATING	CT. BRK. RATING	A.L.C. RATING	TERM. CAPACITY	TORQUE <td>RECOM. SIZE</td> <td>RECOM. FUSING</td> <td>RECOM. GND. SIZE</td> <td>RECOM. CONDUIT</td>	RECOM. SIZE	RECOM. FUSING	RECOM. GND. SIZE	RECOM. CONDUIT
125V	274A	320A	35,000	500CMIL TO 4 AWG	275 N./LBS	350CMIL	350A	2 AWG	2"

3ø UPS
FUNCTIONAL BLOCK DIAGRAM

DATE: 2/27/03
DRAWN BY: J. J. J. / J. J. J.
CHECKED BY: J. J. J. / J. J. J.
DATE: 2/27/03

Power Systems, Inc.
15333 JMW RD, 1200DC
ELYRIA, OH 44025-2214

SHEET 1 OF 1