

Notes: Unless otherwise specified, dimensions are in inches. Dimensions within brackets [ ] are in millimeters.  
 Recommended clearance for serviceability is 36" [914] on the left side, 18" [457.2] on the right side and 18" [457.2] at the back of the system.

**LTI Power Systems, Inc.**  
 TEL. (440) 327-5050  
 10800 Middle Ave. Elyria, Ohio 44035

ProUPS B800 ENCLOSURE  
 10-40KVA  
 10KVA WEIGHT: 860 LBS. (390 kg)  
 15KVA WEIGHT: 950 LBS. (431 kg)  
 20KVA WEIGHT: 1058 LBS. (480 kg)  
 30KVA WEIGHT: 1150 LBS. (522 kg)  
 40KVA WEIGHT: 1220 LBS. (554 kg)

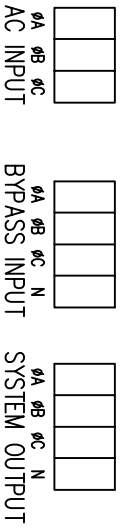
LTI - ProUPS  
 CAD DWG NAME: RK333-A2

REV.  
 2

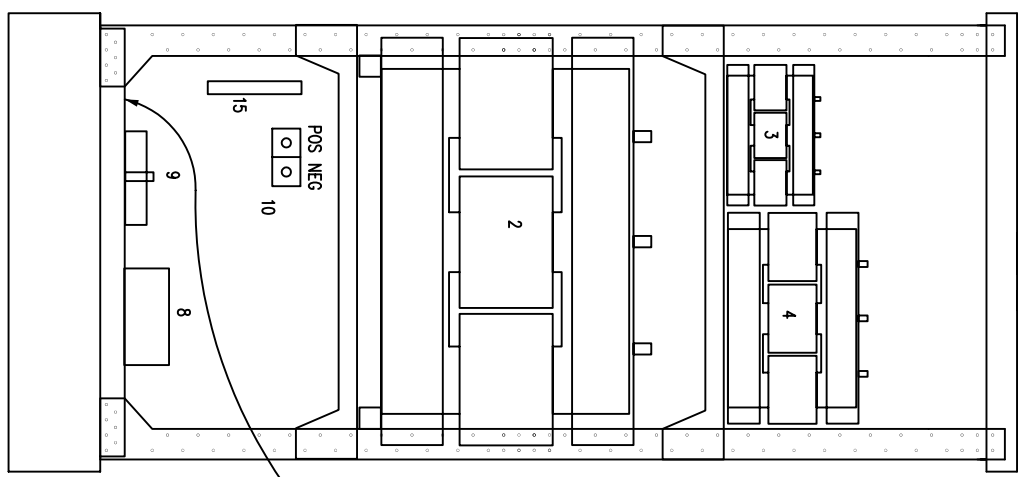
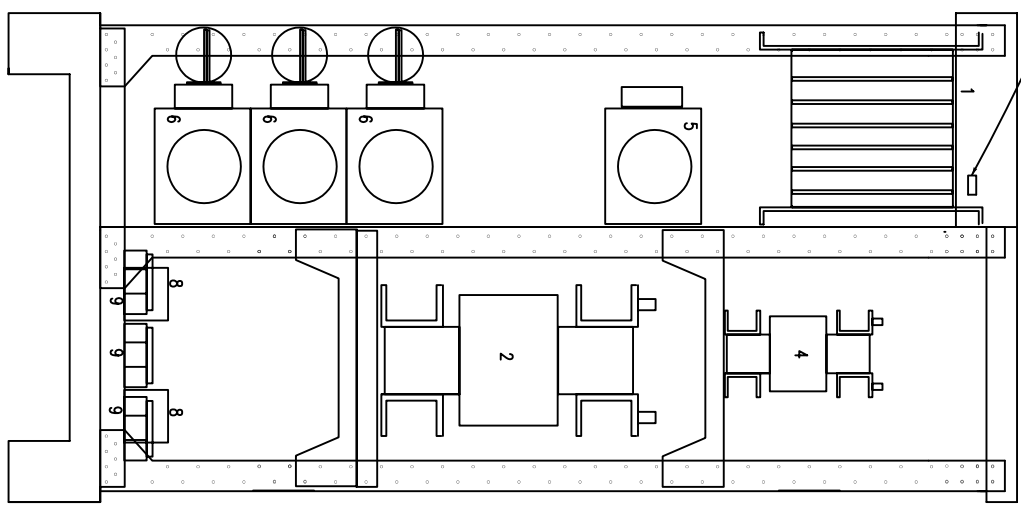
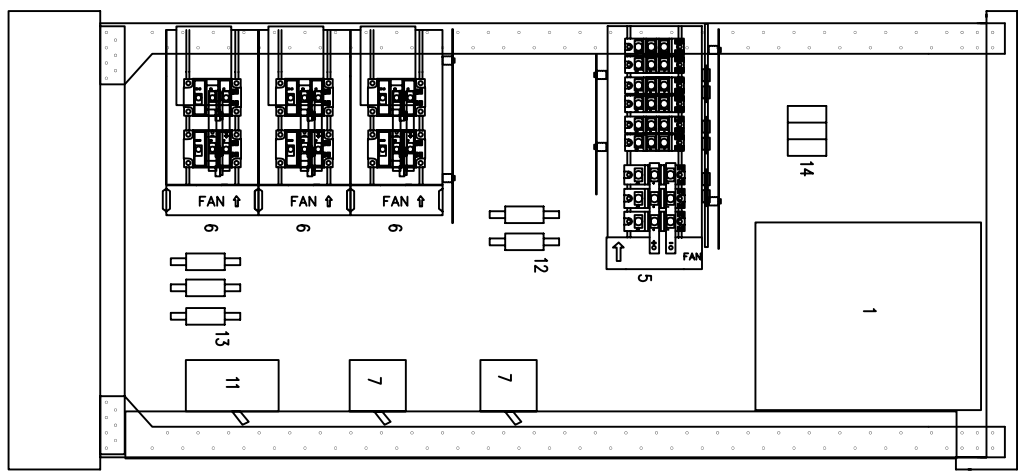
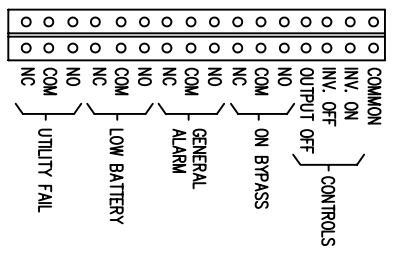
- 1 - ELECTRONICS RACK
- 2 - INVERTER TRF.
- 3 - AC CHOKE
- 4 - AUTOTRMR.
- 5 - RECT/STAT. SWITCH POWER PACKS
- 6 - INVERTER POWER PACK
- 7 - MOBS
- 8 - RFI FILTERS

- 9 - TERMINALS
- 10 - BATTERY TERMINALS
- 11 - BATTERY BREAKER
- 12 - INVERTER FUSES
- 13 - BYPASS FUSES
- 14 - pf CORRECTION FUSES
- 15 - RELAY INTERFACE TERMINALS

TERMINATION CONFIGURATION (BOTTOM, FRONT)  
 TERMINAL BLOCK CAPACITY: 2/0 TO 14 GA.



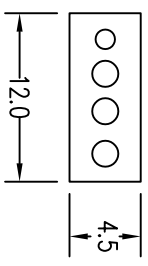
RELAY INTERFACE TERMINATIONS  
 TERMINAL CAPACITY: 14 TO 20 AWG.  
 RELAYS RATED 1A @ 24VDC, 0.5A @ 120VAC RESISTIVE



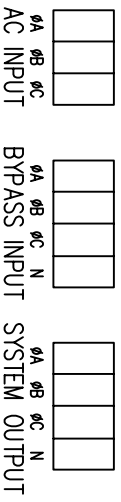
40KVA CONFIGURATION (208/208V)  
 1-1/4" CONDUIT (AC)  
 1-1/2" CONDUIT (BYPASS)  
 2" CONDUIT (OUTPUT)

40KVA CONFIGURATION (480/208V)  
 1-1/4" CONDUIT (AC)  
 3/4" CONDUIT (BYPASS)  
 2" CONDUIT (OUTPUT)

40KVA CONFIGURATION (480/480V)  
 1-1/4" CONDUIT (AC)  
 3/4" CONDUIT (BYPASS)  
 3/4" CONDUIT (OUTPUT)

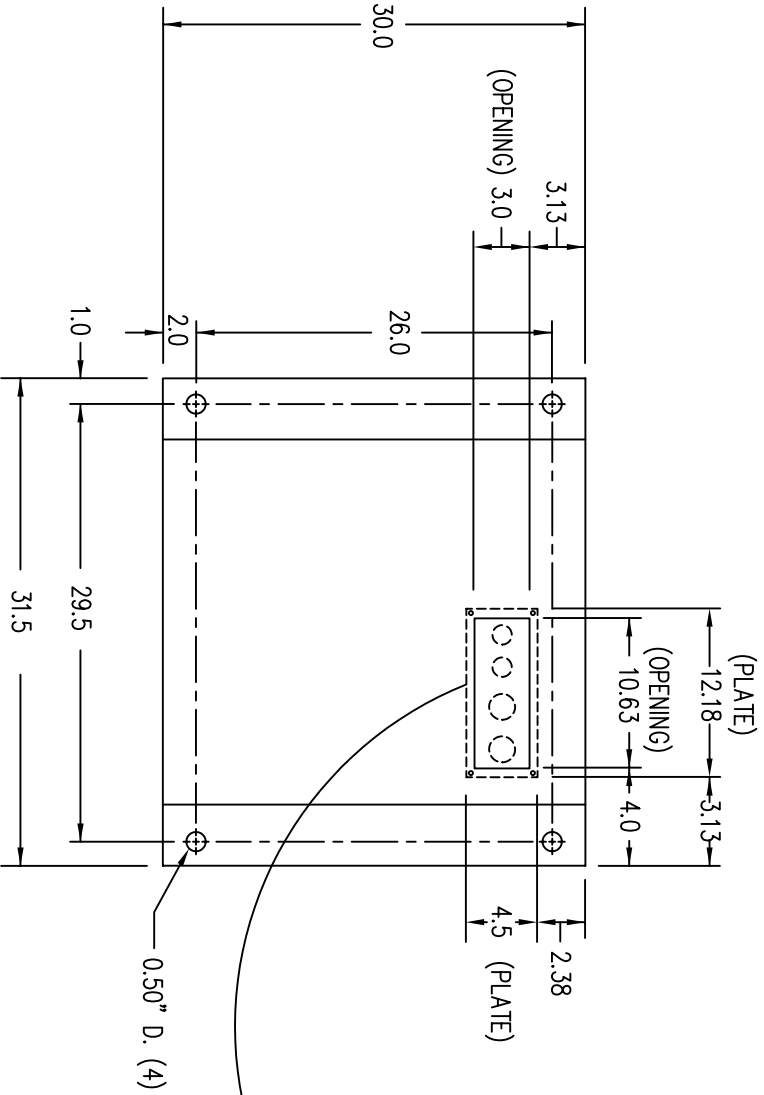


TERMINATION CONFIGURATION (BOTTOM, FRONT)  
 TERMINAL BLOCK CAPACITY: 2/0 TO 14 GA.

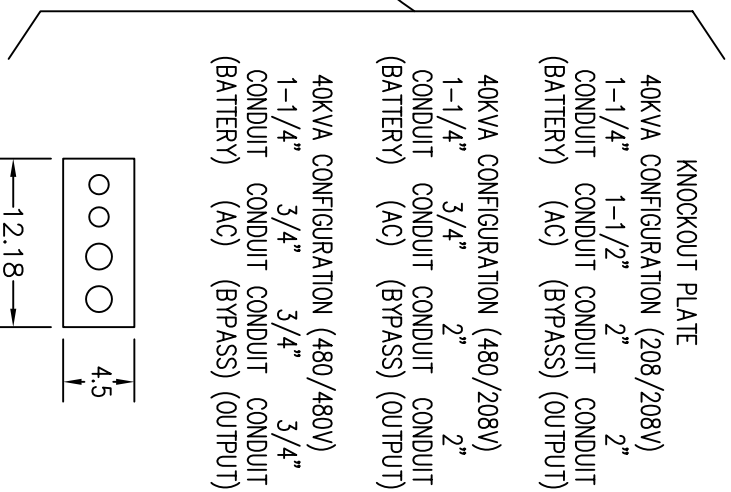


NOTE: ALL DIMENSIONS ARE IN INCHES UNLESS OTHERWISE SPECIFIED.

FRONT



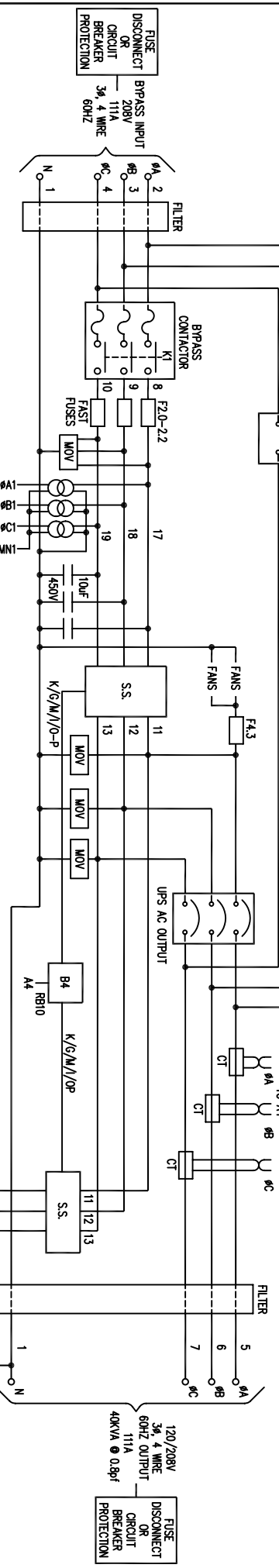
(VIEW FROM BOTTOM OF CABINET)



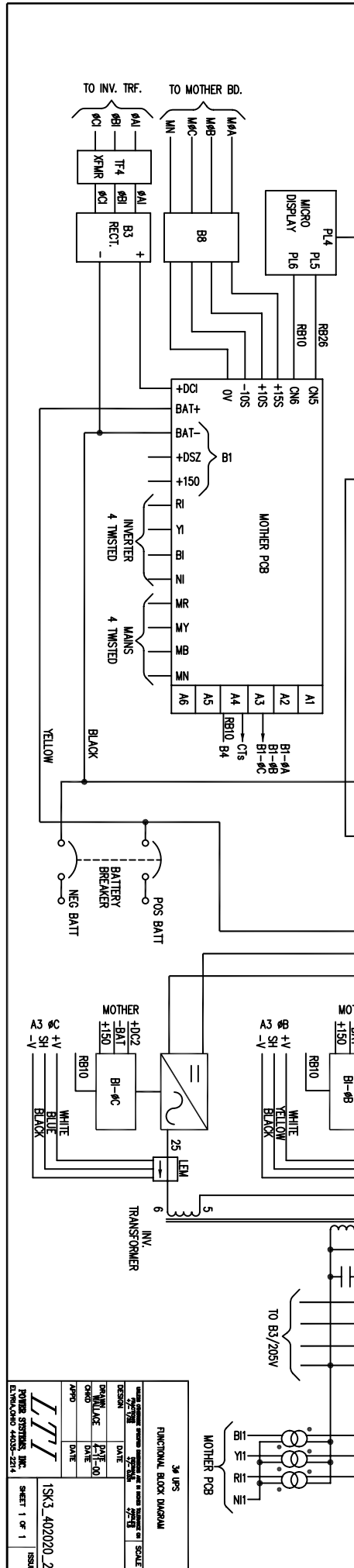
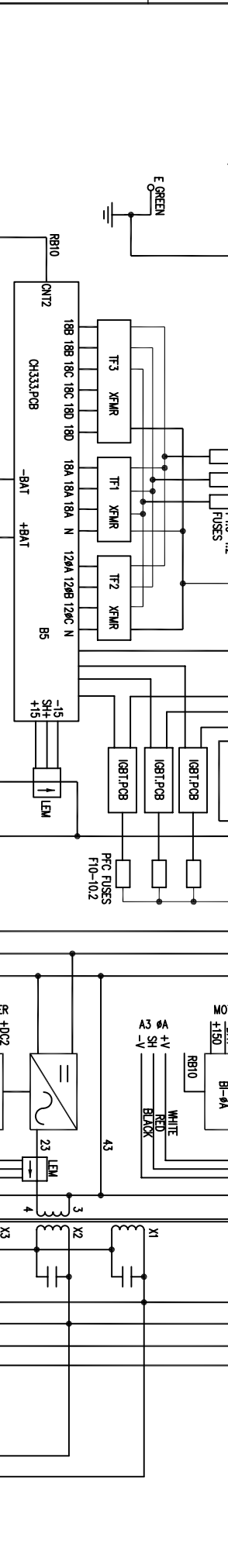
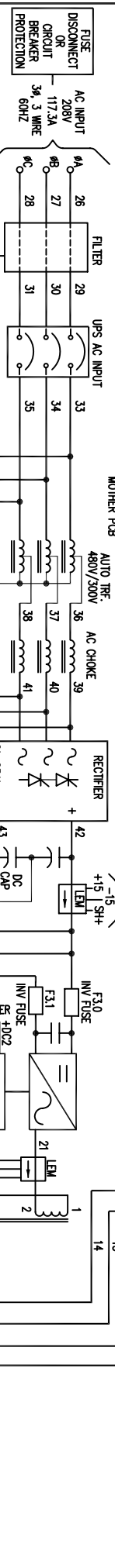
- NOTES:
1. WIRE SIZES BASED ON 90°C COPPER CONDUCTORS OPERATING IN 30°C AMBIENT AND NEC TABLES 250-95 AND 310-16. INCREASE CONDUCTOR SIZE FOR LONG RUNS.
  2. CLOCKWISE PHASE ROTATION MUST BE OBSERVED FOR BYPASS AND AC INPUTS.

MANUAL BYPASS

AC INPUT	MAX INPUT CURRENT	CT BRKR RATING	A.I.C. RATING	TERM. CAPACITY	TORQUE	RECM. SIZE	RECM. FUSING	RECM. GND. SIZE	RECM. CONDUIT
208V	117.3A	150A	25,000	14-2/0 AWG	50 IN/LBS	2/0 AWG	175A	4 AWG	1-1/2"
BYPASS INPUT/AC OUTPUT	MAX 111A	CT: 150A	A.I.C. RATING 25,000	TERM. CAPACITY 14-2/0 AWG	TORQUE 50 IN/LBS	RECM. SIZE 2/0 AWG	RECM. FUSING 175A	RECM. GND. SIZE 4 AWG	RECM. CONDUIT 2"
208V	111A	150A	25,000	14-2/0 AWG	50 IN/LBS	2/0 AWG	175A	4 AWG	2"
DC INPUT	360V	121.9A	125A	25,000	14-2/0 AWG	50 IN/LBS	1 AWG	150A	6 AWG



120/208V  
3φ, 4 WIRE  
60HZ OUTPUT  
111A  
40KVA @ 0.9pf



3φ UPS  
FUNCTIONAL BLOCK DIAGRAM

DESIGN: [ ] DATE: [ ]  
 DRAWN: [ ] DATE: [ ]  
 CHECKED: [ ] DATE: [ ]  
 APPROVED: [ ] DATE: [ ]

FORN SYSTEMS, INC.  
 15000 WILSON BLVD  
 CHESAPEAKE, VA 23020-2114

ISSUE: [ ]  
 SHEET 1 OF 1