

LEFT



FRONT



RIGHT

[1650] 65.0

- NOTES:
1. UNLESS OTHERWISE SPECIFIED, ALL DIMENSIONS ARE IN INCHES. DIMENSIONS WITHIN BRACKETS [ ] ARE IN MILLIMETERS.
  2. RECOMMENDED CLEARANCE FOR AIR FLOW AND SERVICEABILITY : LEFT SIDE 30" [762] , RIGHT SIDE 18" [457.2] AND BACK OF SYSTEM 6" [152.4].

**LTI Power Systems, Inc.**

TEL. (440) 327-5050

10800 MIDDLE AVE. BLDG. B ELYRIA, OHIO

PROUPS B1250 ENCLOSURE

40KVA, 125VDC

WEIGHT: 1,800 LBS. (817.2 kg)

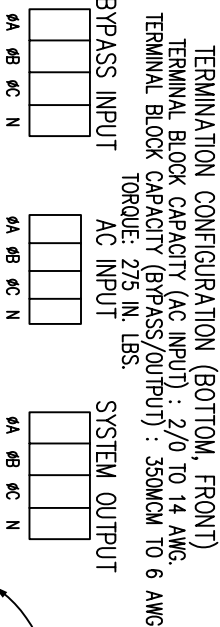
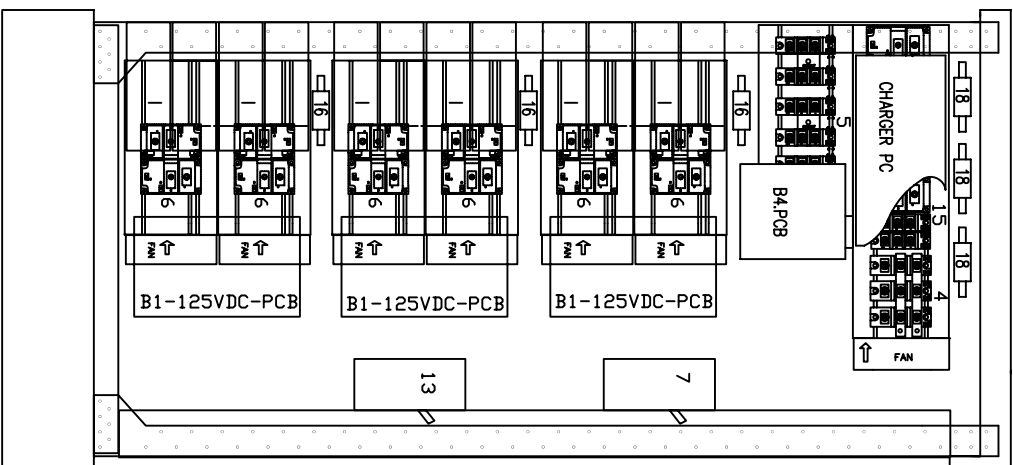
LTI - PROUPS

SHEET 1 OF 1

CAD DWG NAME: B1250CAB\_40\_125VDC

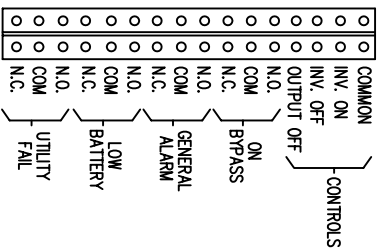
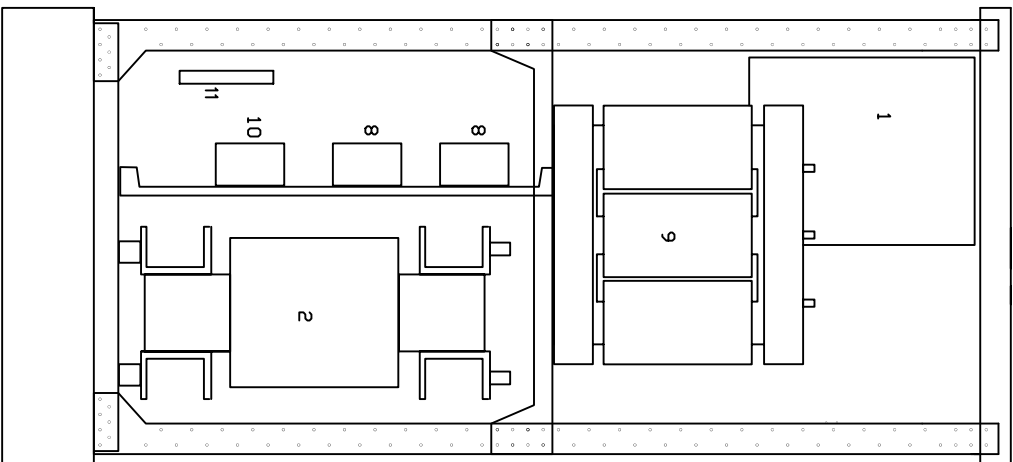
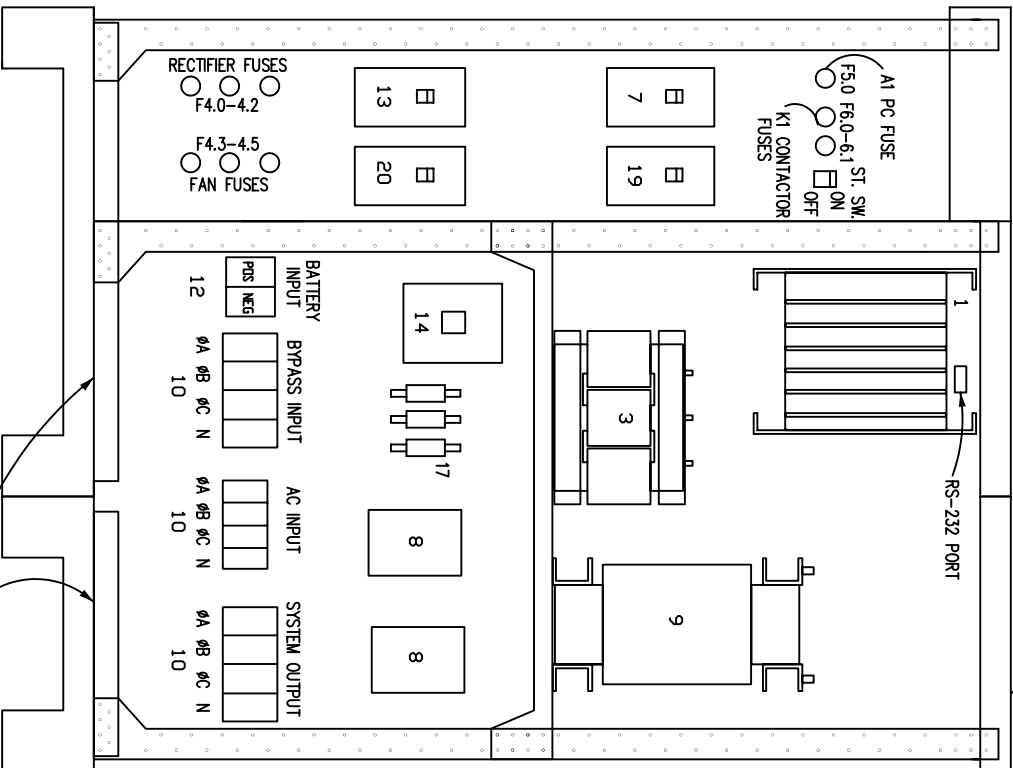
REV.

- 1 - ELECTRONICS RACK
- 2 - INVERTER TRANSFORMER
- 3 - AC CHOKE
- 4 - RECTIFIER POWER PACK
- 5 - STAT. SWITCH POWER PACK
- 6 - INVERTER POWER PACK
- 7 - MANUAL BYPASS CIRCUIT BREAKER
- 8 - RFI FILTERS
- 9 - CHARGER ISOLATION TRANSFORMER
- 10 - INPUT/OUTPUT TERMINALS
- 11 - RELAY INTERFACE TERMINALS
- 12 - BATTERY INPUT TERMINALS
- 13 - BATTERY CIRCUIT BREAKER
- 14 - CONTACTOR
- 15 - PFC POWER MODULES
- 16 - INVERTER FUSES
- 17 - BYPASS FUSES
- 18 - PFC FUSES
- 19 - OUTPUT CIRCUIT BREAKER
- 20 - INPUT CIRCUIT BREAKER



RELAY INTERFACE TERMINATIONS

TERMINAL CAPACITY: 14 TO 20 AWG.  
 STANDARD CONTACT CLOSURES  
 ARE CONFIGURED FOR N.O. OPERATION  
 RELAYS RATED 1A @ 24VDC, 0.5A @ 120VAC RESISTIVE



LEFT

FRONT

RIGHT

CONDUIT ENTRY THRU GLAND PLATES

CONDUIT ENTRY THRU TOP GLAND PLATE

LTI Power Systems, Inc.

TEL. (440) 327-5050 10800 Middle Ave. Bldg. B Elyria, Ohio 44035

MK333 40KVA, 125VDC ASSEMBLY

LTI-PROUPS

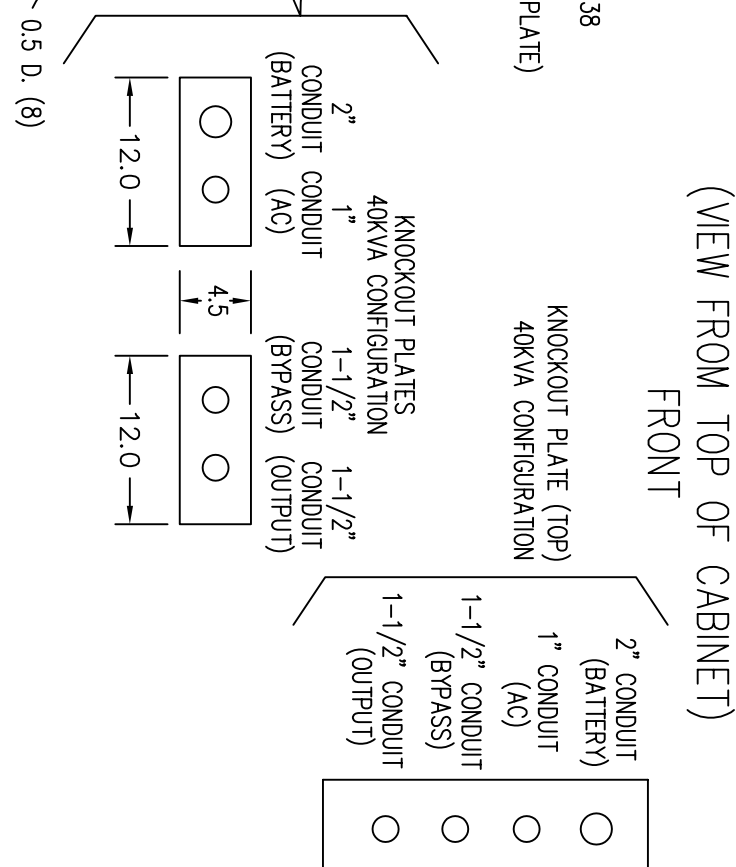
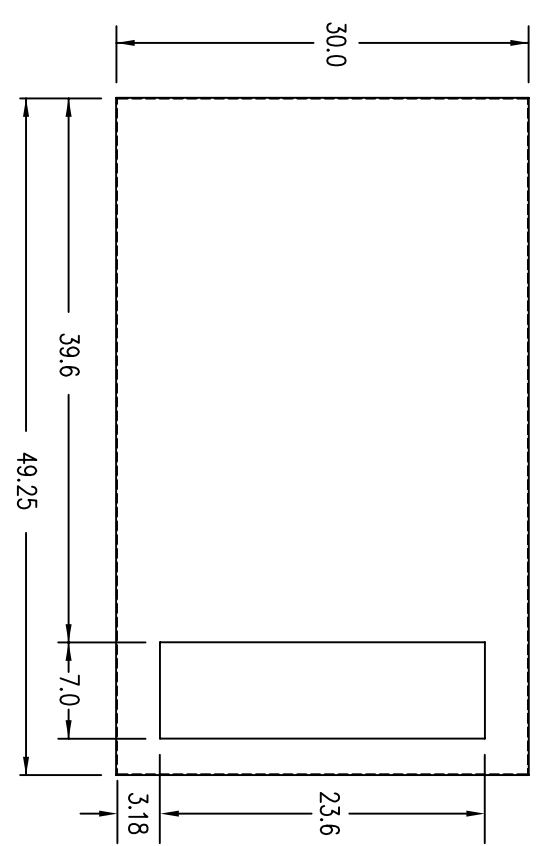
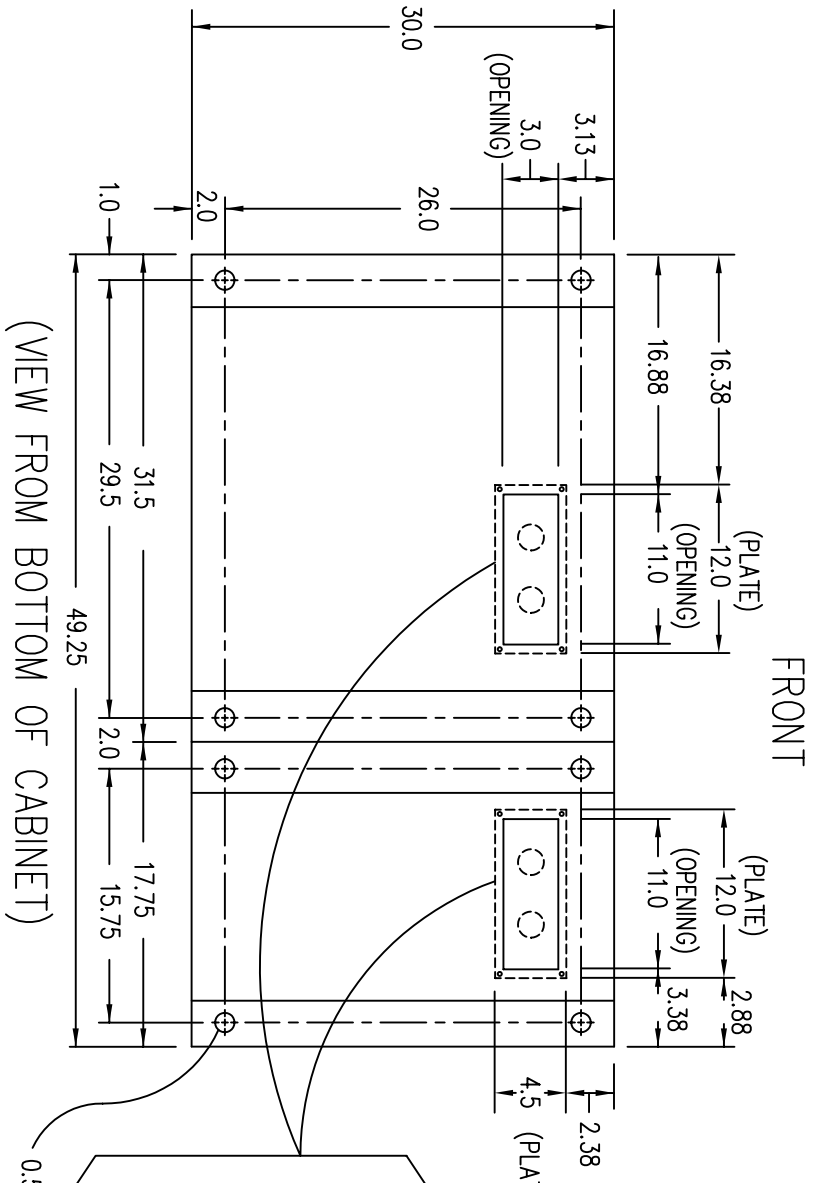
CAD DWG NAME: 40K333-125VDC

REV.

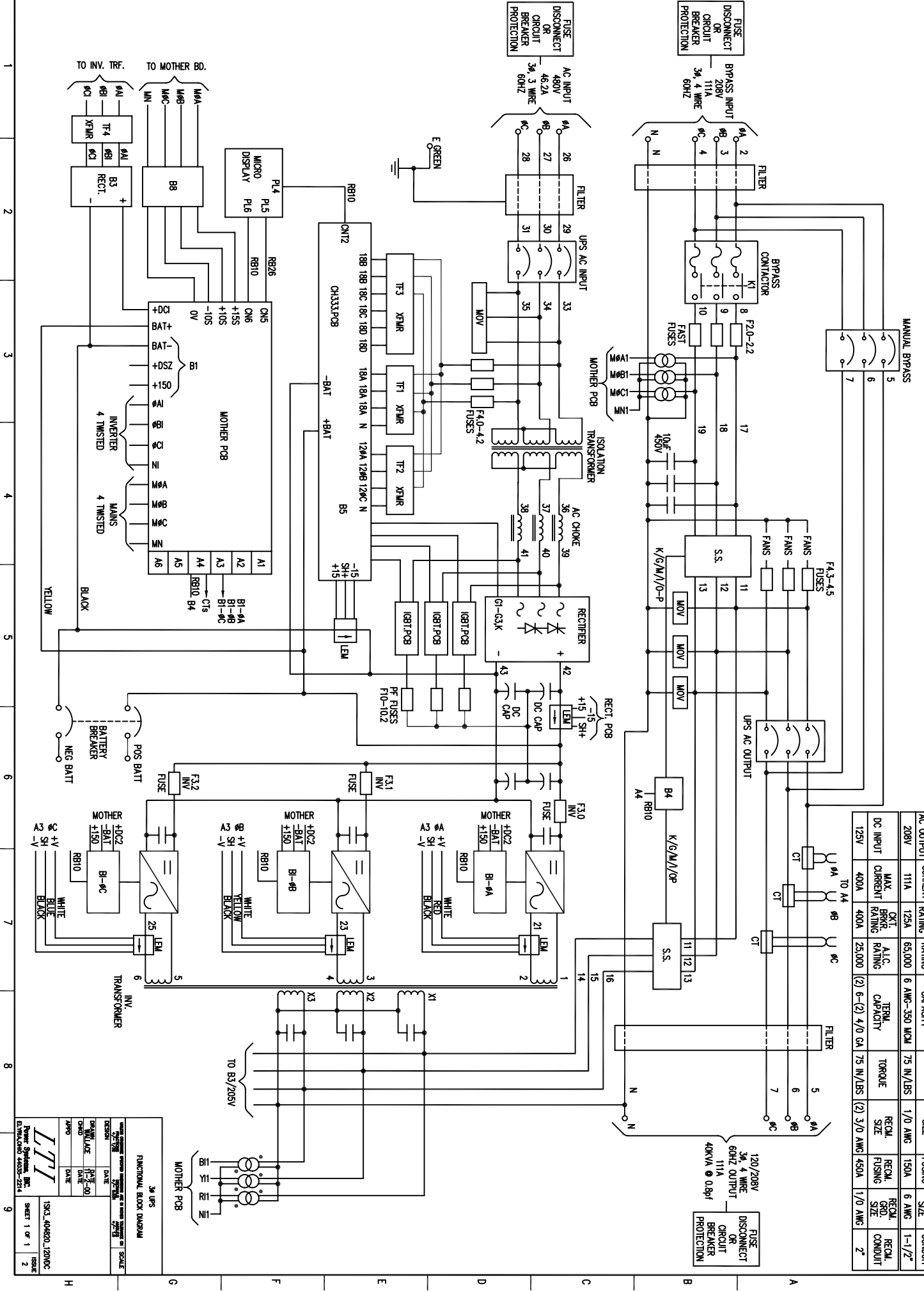
2

TERMINATION CONFIGURATION (BOTTOM, FRONT)  
 TERMINAL BLOCK CAPACITY (AC INPUT) : 2/0 TO 14 AWG.  
 TERMINAL BLOCK CAPACITY (BYPASS/OUTPUT) : 6 TO 350 MCM  
 TERMINAL BLOCK CAPACITY (BATTERY) : (2) 6 TO (2) 4/0 AWG

NOTE: ALL DIMENSIONS ARE IN INCHES UNLESS OTHERWISE SPECIFIED.  
 WHEN USING TOP CABLE ENTRY, ROUTE WIRES DOWN ALONG RIGHT SIDE OF CABINET  
 TO BOTTOM, FRONT TERMINAL BLOCK LOCATION.



- NOTES:
1. WIRE SIZES BASED ON 90°C COPPER CONDUCTORS OPERATING IN 30°C AMBIENT AND NEC TABLES 250-95 AND 310-16. INCREASE CONDUCTOR SIZE FOR LONG RUNS.
  2. CLOCKWISE PHASE ROTATION MUST BE OBSERVED FOR BYPASS AND AC INPUTS.



AC INPUT	MAX. INPUT CURRENT	CT. BRK. RATING	A.I.C. RATING	TERM. CAPACITY	TORQUE	RECOM. SIZE	RECOM. FUSING	RECOM. GND. SIZE	RECOM. CONDUIT
480V	46.2A	60A	65,000	14 to 27/0 AWG	50 IN/LBS	4 AWG	80A	8 AWG	1"
208V	111A	125A	65,000	6 AWG-350 MCM	75 IN/LBS	1/0 AWG	150A	6 AWG	1-1/2"
DC INPUT	MAX. BATT. CURRENT	CT. BATT. RATING	A.I.C. RATING	TERM. CAPACITY	TORQUE <td>RECOM. SIZE</td> <td>RECOM. FUSING</td> <td>RECOM. GND. SIZE</td> <td>RECOM. CONDUIT</td>	RECOM. SIZE	RECOM. FUSING	RECOM. GND. SIZE	RECOM. CONDUIT
125V	400A	400A	25,000	(2) 6-(2) 4/0 GA	75 IN/LBS	(2) 3/0 AWG	450A	1/0 AWG	2"

3ø UPS  
FUNCTIONAL BLOCK DIAGRAM

DATE: 07/27/03  
DRAWN BY: J. J. JONES  
CHECKED BY: J. J. JONES  
DATE: 07/27/03

Power Systems, Inc.  
1533, AMHERST, 1200NC  
SHEET 1 OF 1