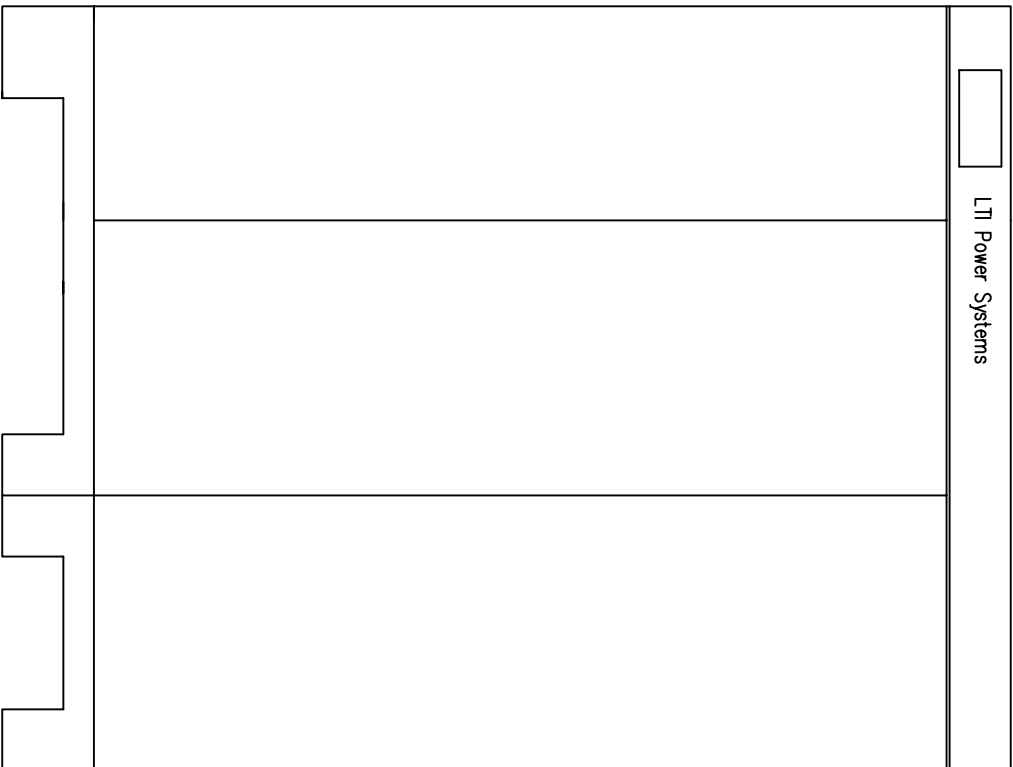


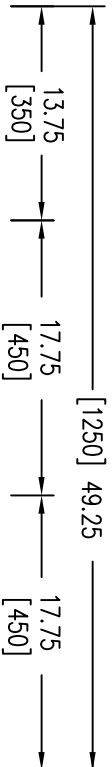
LEFT



FRONT



RIGHT



- NOTES:
1. UNLESS OTHERWISE SPECIFIED, ALL DIMENSIONS ARE IN INCHES. DIMENSIONS WITHIN BRACKETS [] ARE IN MILLIMETERS.
 2. RECOMMENDED CLEARANCE FOR SERVICEABILITY IS 36" [914] ON THE LEFT SIDE, 18" [457.2] ON THE RIGHT SIDE AND 18" [457.2] AT THE BACK OF THE SYSTEM.

LTI Power Systems, Inc.
 TEL. (440) 327-5050
 10800 MIDDLE AVE. BLDG. B ELYRIA, OHIO

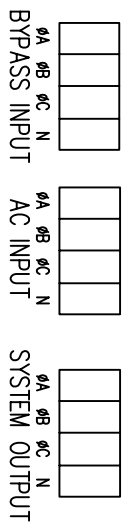
PROUPS B1250 ENCLOSURE
 50KVA
 WEIGHT: 1,800 LBS. (817.2 kg)

SHEET 1 OF 1

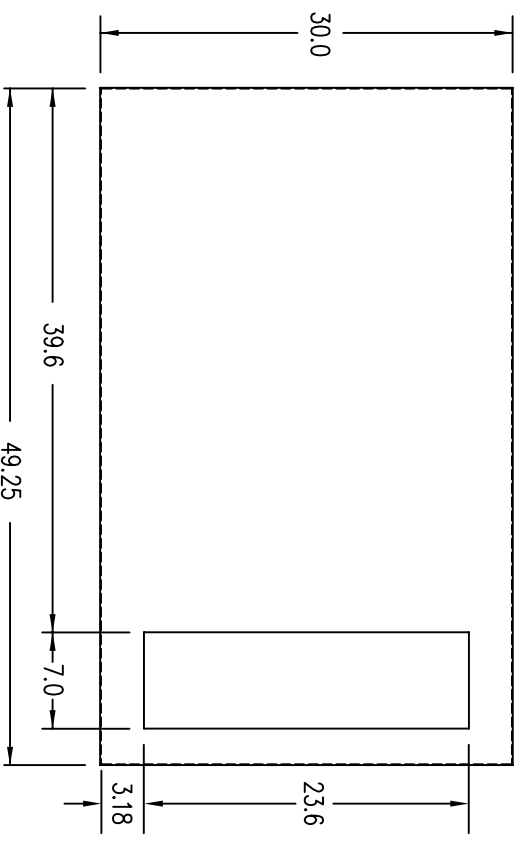
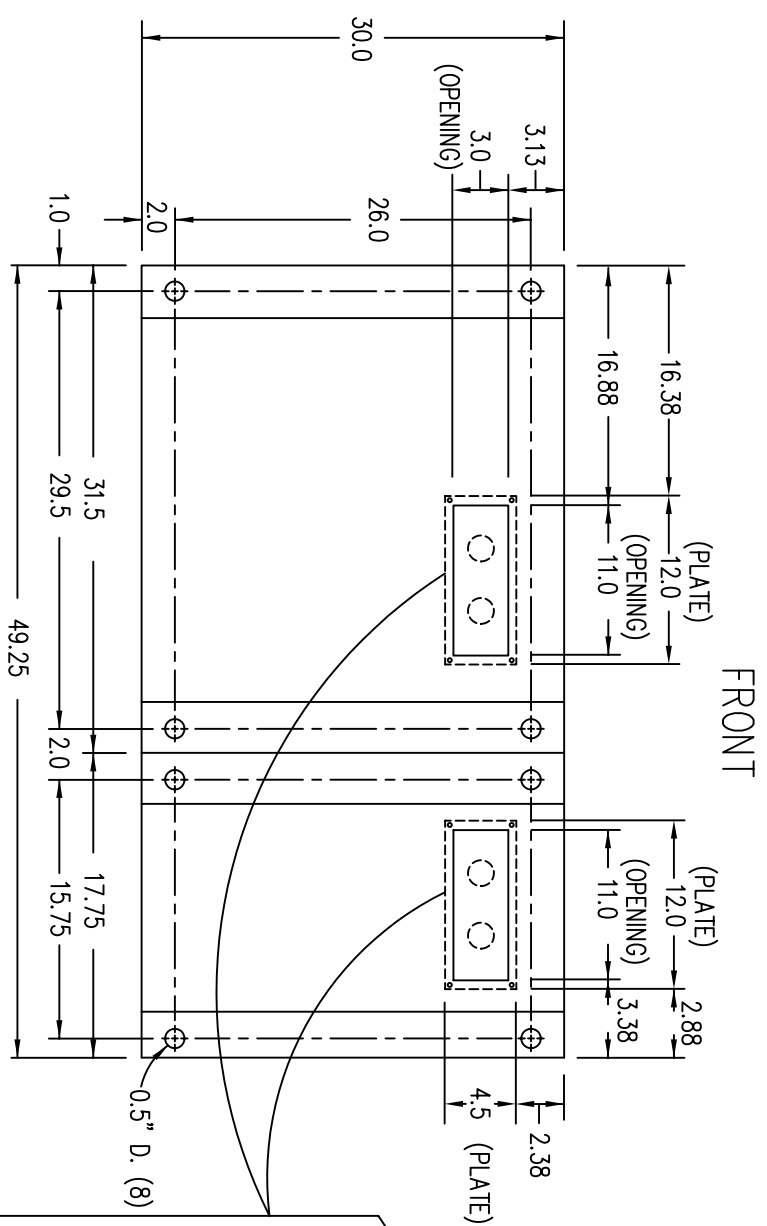
LTI - PROUPS
 CAD DWG NAME: B1250CAB_50

REV.

TERMINATION CONFIGURATION (BOTTOM, FRONT)
 TERMINAL BLOCK CAPACITY: (6 TO 350 MCM) 208/208V SYSTEMS
 TERMINAL BLOCK CAPACITY: (6 TO 350 MCM, AC INPUT: 14 TO 2/0 AWG) 480/208V SYSTEMS
 TERMINAL BLOCK CAPACITY: (14 TO 2/0 AWG) 480/480V SYSTEMS

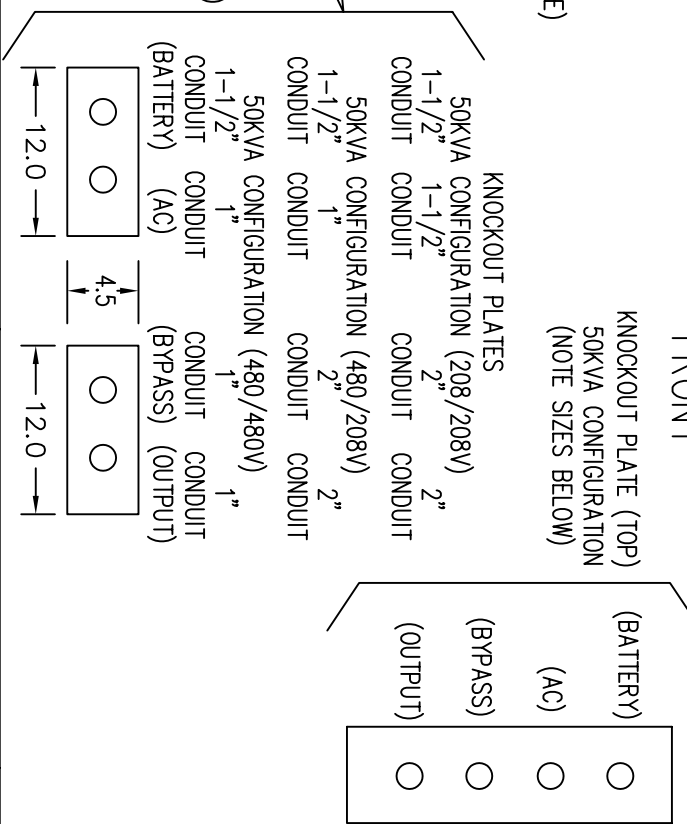


NOTE: ALL DIMENSIONS ARE IN INCHES UNLESS OTHERWISE SPECIFIED.
 WHEN USING TOP CABLE ENTRY, ROUTE WIRES DOWN ALONG RIGHT SIDE OF CABINET
 TO BOTTOM, FRONT TERMINAL BLOCK LOCATION.



(VIEW FROM BOTTOM OF CABINET)

(VIEW FROM TOP OF CABINET)



LTI Power Systems, Inc.

TEL. (440) 327-5050 10800 Middle Ave. Bldg. B Elyria, Ohio 44035

50KVA ASSEMBLY

SHEET 1 OF 1

LTI-PROUPS

CAD DWG NAME: 50K33_33BASE

REV. 1

