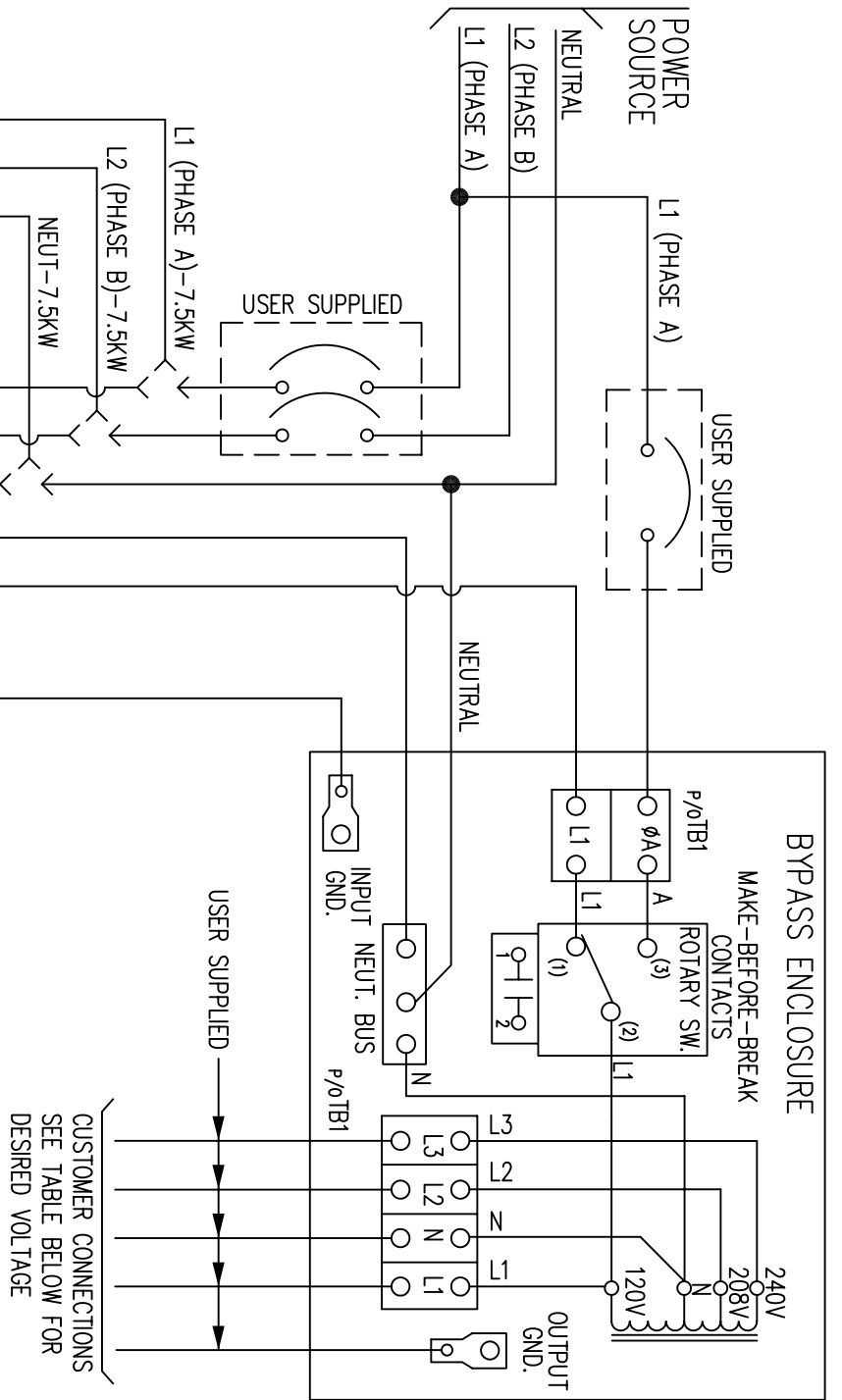
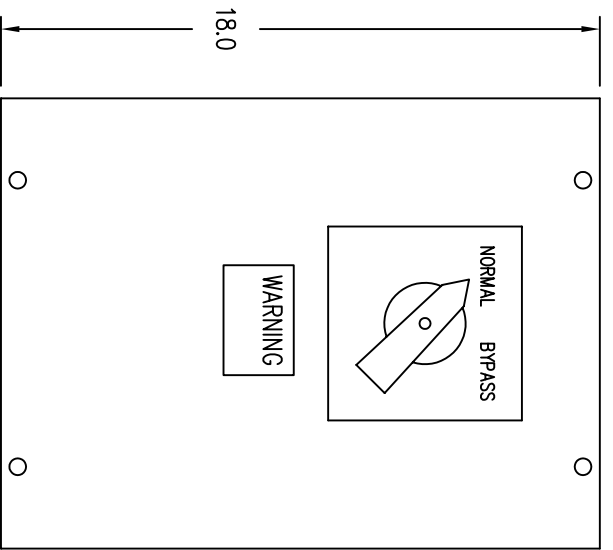
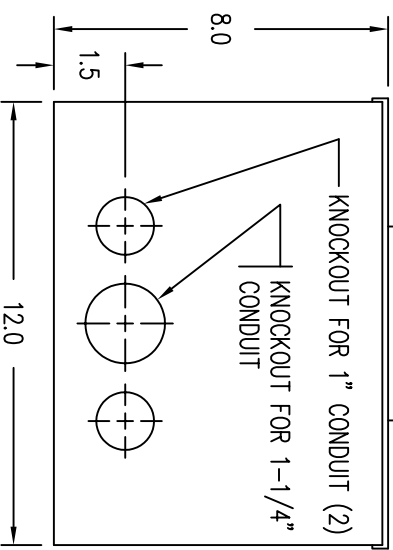


### BYPASS ENCLOSURE



OUTPUT VOLTAGE	CONNECTIONS	TERM. BLK. (TB1)
240V	L1 & L3	
208V	L1 & L2	
120V	N & L1	
240/120V	L1 & L3, N & L1, L3	
208/120V	L1 & L2, N & L1	

CUSTOMER CONNECTIONS  
SEE TABLE BELOW FOR  
DESIRED VOLTAGE



**NOTES:**

1. AC INPUT TERMINAL BLOCK DESIGNATIONS VARY BETWEEN 3KW, 5KW AND 7.5KW. SYSTEM OUTPUT TERMINAL BLOCK DESIGNATIONS ARE THE SAME FOR THESE SYSTEMS.
2. OBSERVE ALL PHASING WHEN CONNECTING EXTERNAL SWITCH CONTACTS.
3. EXTERNAL ROTARY SWITCH ENCLOSURE: NEMA TYPE 3R, 18" L x 12" W x 8" D.
4. DO NOT OPERATE THE ROTARY SWITCH TO BYPASS POSITION WITH THE "UPS" DE-ENERGIZED.
5. NORMAL - UPS SUPPLYING THE LOAD.  
BYPASS - COMMERCIAL POWER SUPPLYING THE LOAD.