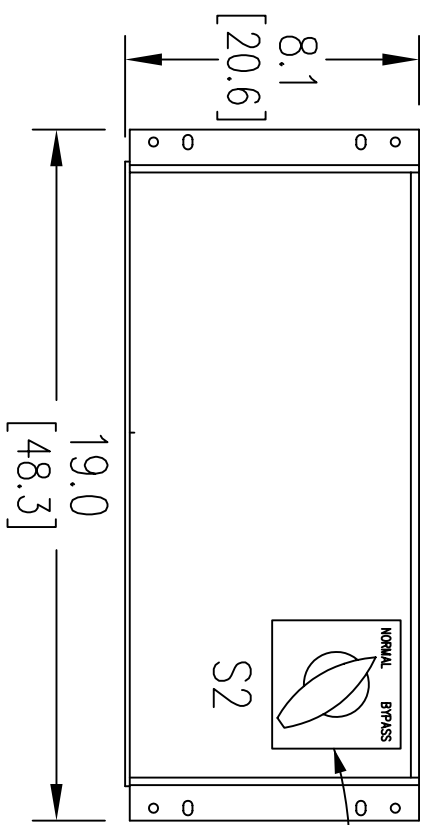


TOP VIEW



FRONT VIEW

NOTE: REVERSE ANGLES FOR 23" RACK MOUNTING

- BYPASS SWITCH
- 4232-130
 - 4232-131
 - 4232-133
 - 4232-135
 - 4232-136
- ACCESSORIES ONLY

PHYSICAL INSTALLATION

1. MOUNT ENCLOSURE TO RELAY RACK USING 12-24 SCREWS, LOCK WASHERS AND FLAT WASHERS.

GENERAL NOTES:

- 1 ALL DIMENSIONS ARE IN INCHES UNLESS OTHERWISE SPECIFIED. DIMENSIONS WITHIN BRACKETS [] ARE IN CENTIMETERS.

MECHANICAL DATA

- ENCLOSURE WEIGHT:
- 30 LBS...4232-130
 - 70 LBS...4232-131
 - 65 LBS...4232-132
 - 80 LBS...4232-133
 - 75 LBS...4232-134
 - 30 LBS...4232-135
 - 95 LBS...4232-136
 - 90 LBS...4232-137

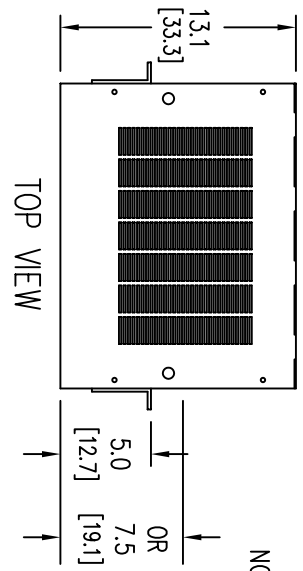
SIZE: SEE DRAWING
 PAINT: SHERWIN WILLIAMS PT. No. F63 A 33
 COLOR: PROFILE GRAY

ENVIRONMENTAL DATA

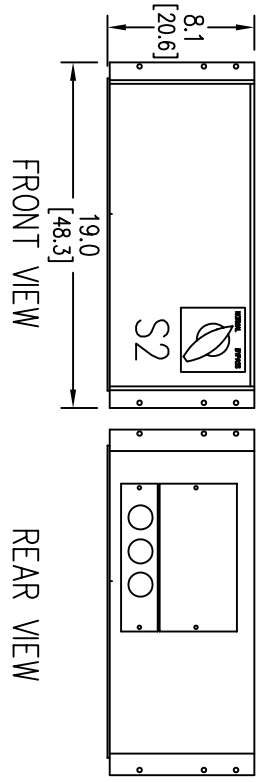
NEMA 1= INDOOR DUTY, OPEN VENTILATED,
 NONCORROSIVE, CONTROLLED
 ENVIRONMENT PER UL1778, DOES
 NOT PREVENT ENTRY OF DUST.

RACK MOUNT BYPASS/DUAL OUTPUT ACCESSORY INSTALLER CONNECTIONS		IC4232-135	
DESIGN	DATE	IC4232-135	
DRAWN	DATE	IC4232-135	
WALLACE	5-19-97	IC4232-132	
CHKD	DATE	IC4232-137	
		IC4232-130	
APPD	DATE		SHEET 1 OF 5
R.J.MOROG	5-19-97		ISSUE

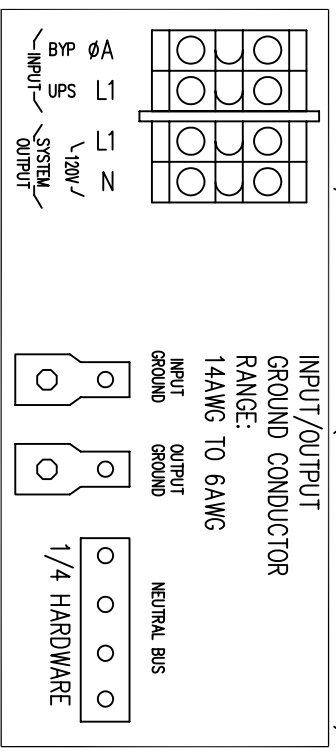
4232-131/-133/-136 - REAR (BYPASS/DUAL OUTPUT ENCLOSURE)



NOTE: OPTIONAL BYPASS/DUAL OUTPUT ENCLOSURE IS DESIGNED WITH TOP VENTILATION. THEREFORE, ENCLOSURE SHOULD BE INSTALLED ABOVE UPS/INVERTER CABINET.



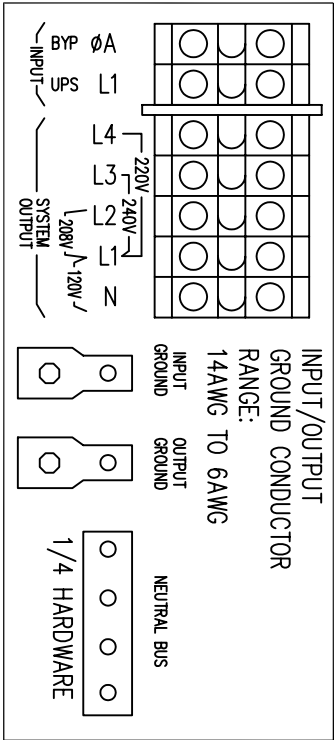
4232-130/-135 - REAR (BYPASS ENCLOSURE)



BYPASS ØA/NEUT. INPUT	CONNECT TO ØA & NEUT. BUS	OUTPUT	CONNECT TO 120V	CONNECT TO L1 & N
FROM 120V SYSTEM OUTPUT	CONNECT TO L1	UPS L1	CONNECT TO NEUTRAL BUS	

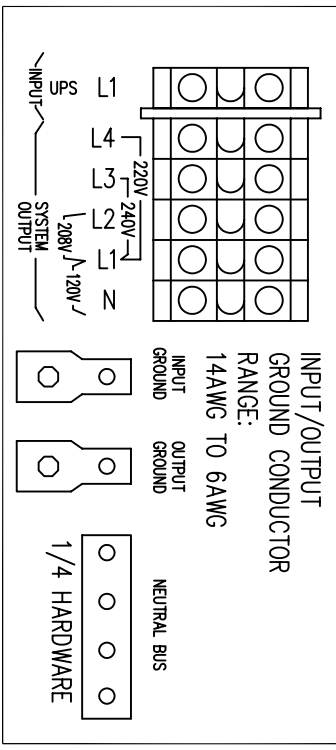
N	NEUTRAL BUS
---	-------------

4232-132/-134/-137 - REAR (DUAL OUTPUT ENCLOSURE)



BYPASS ØA/NEUT. INPUT	CONNECT TO 120V	DUAL OUTPUT	CONNECT TO 120/208V	CONNECT TO L1 & N/L1 & L2
FROM 120V SYSTEM OUTPUT	CONNECT TO L1	UPS L1	CONNECT TO 120/240V	CONNECT TO L1 & N/L1 & L3
N	NEUTRAL BUS		CONNECT TO 120/220V	CONNECT TO L1 & N/L1 & L4

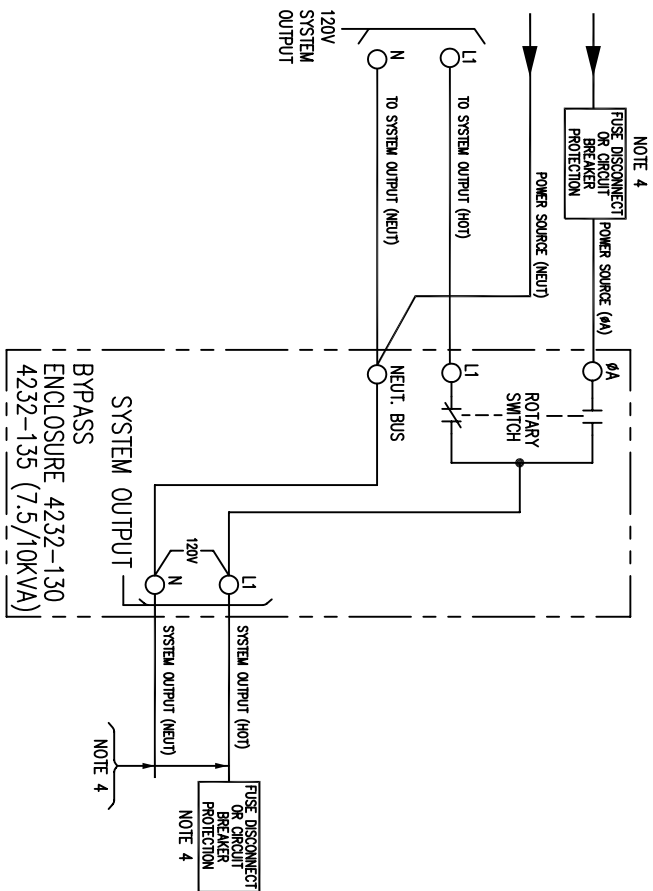
4232-132/-134/-137 - REAR (DUAL OUTPUT ENCLOSURE)



FROM 120V SYSTEM OUTPUT	CONNECT TO L1	DUAL OUTPUT	CONNECT TO 120/208V	CONNECT TO L1 & N/L1 & L2
N	NEUTRAL BUS		CONNECT TO 120/240V	CONNECT TO L1 & N/L1 & L3
			CONNECT TO 120/220V	CONNECT TO L1 & N/L1 & L4

N	NEUTRAL BUS
---	-------------

INSTALLER CONNECTIONS
 RACK MOUNT
 IC4232-135
 IC4232-134
 IC4232-133
 IC4232-132
 IC4232-131
 IC4232-130

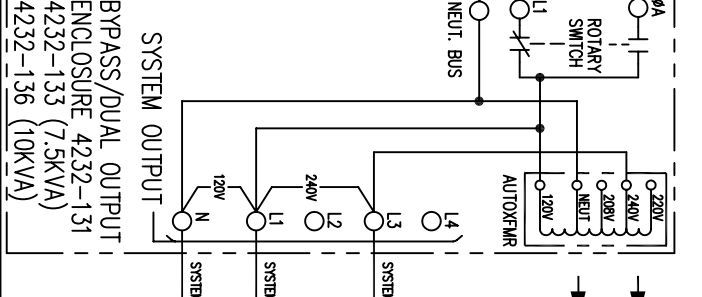
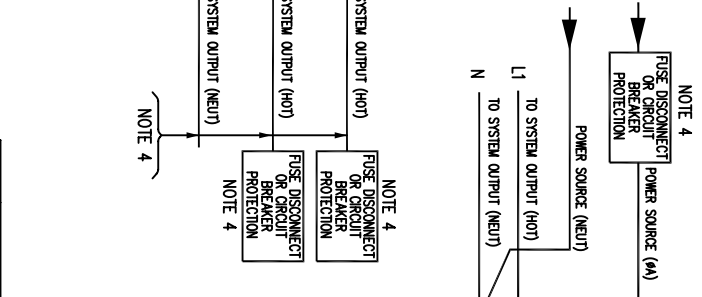
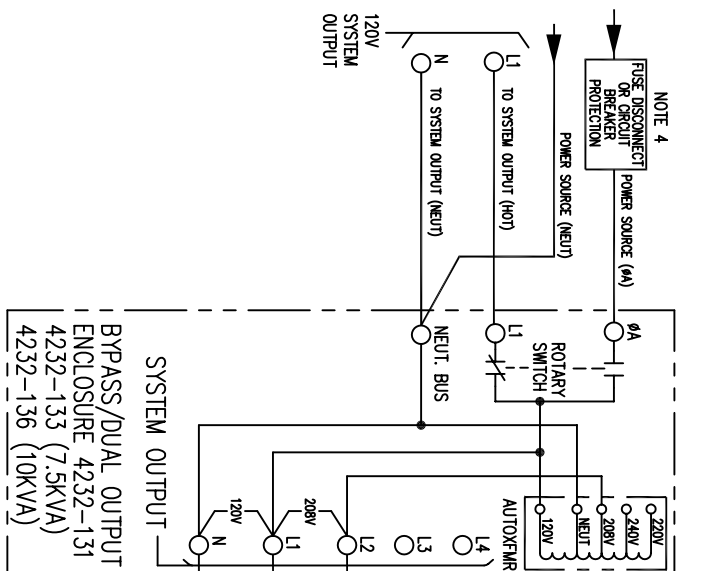


SIZE	120V OUTPUT						
	OUTPUT VOLTAGE	FULL LOAD CURRENT (AMPS)	TERM. CAPACITY	TORQUE	RECM. SIZE	RECM. GRD. SIZE	RECM. FUSING
2KVA	120V	16.6A	12-2 AWG	35 IN/LB	10 GA	10 GA.	20A
3KVA	120V	25A	12-2 AWG	35 IN/LB	8 GA	10 GA.	35A
5KVA	120V	42A	12-2 AWG	35 IN/LB	6 GA	8 GA.	60A
7.5KVA	120V	62.5A	12-2 AWG	35 IN/LB	6 GA	8 GA.	80A
10KVA	120V	83.3A	12-2 AWG	35 IN/LB	3 GA	8 GA.	100A

SIZE	BYPASS SWITCH INPUT						
	AC INPUT	MAX. LOAD CURRENT	TERM. CAPACITY	TORQUE	RECM. SIZE	RECM. FUSING	RECM. GRD. SIZE
2KVA	120	16.6 AMPS	12-2 AWG	35 IN/LB	10 GA	20A	10 GA.
3KVA	120	25 AMPS	12-2 AWG	35 IN/LB	8 GA	35A	10 GA.
5KVA	120	42 AMPS	12-2 AWG	35 IN/LB	6 GA	60A	8 GA.
7.5KVA	120	62.5 AMPS	12-2 AWG	35 IN/LB	6 GA	80A	8 GA.
10KVA	120	83.3 AMPS	12-2 AWG	35 IN/LB	3 GA	100A	8 GA.

- NOTES:
- 1 WIRE SIZE RECOMMENDATIONS BASED ON 90°C COPPER CONDUCTORS OPERATING IN 30°C AMBIENT AND NEC TABLES 250-95 & 310-16, INCREASE CONDUCTOR SIZE FOR LONG RUNS.
 - 2 ALL FIELD WIRING TO BE COPPER CONDUCTOR ONLY.
 - 3 ALL GROUNDS SHOWN SHALL BE CONNECTED SEPARATELY TO A SINGLE GROUNDING POINT AT THE SOURCE SERVICE EQUIPMENT, PER IEEE STD. 446-1980 FIG. 72.
 - 4 FUSE DISCONNECT OR CIRCUIT BREAKER PROTECTION EXTERNAL TO UPS TO BE PROVIDED BY CUSTOMER. SEE TABLE BELOW FOR RECOMMENDED PROTECTION SIZING AND WIRE SIZING.
 - 5 SPECIFIED TORQUE VALUES ARE FOR INTERNAL WIRING CONNECTIONS ONLY.

120V BYPASS INSTALLER CONNECTIONS	
04232-137	
04232-136	
04232-135	
04232-134	
04232-133	
04232-132	
04232-131	
04232-130	



SIZE	120/208V ENCLOSURE OUTPUT										
	OUTPUT VOLTAGE	FULL LOAD CURRENT (AMPS)	TERM. CAPACITY	TORQUE	RECM. SIZE	RECM. GRD. SIZE	RECM. FUSING	RECM. TORQUE	RECM. SIZE	RECM. GRD. SIZE	RECM. FUSING
2KVA	120/208V	16.6/9.6	12-2 AWG	35 IN/LB	10/12GA	10/12GA	20/15A	10 GA.	10 GA.	10 GA.	35/20A
3KVA	120/208V	25/14.5	12-2 AWG	35 IN/LB	8 GA.	8 GA.	35/20A	8 GA.	8 GA.	8 GA.	60/30A
5KVA	120/208V	42/24	12-2 AWG	35 IN/LB	6 GA.	6 GA.	60/30A	6 GA.	6 GA.	6 GA.	80/50A
7.5KVA	120/208V	62.5/36	12-2 AWG	35 IN/LB	6 GA.	6 GA.	80/50A	6 GA.	6 GA.	6 GA.	100/60A
10KVA	120/208V	83.3/48	12-2 AWG	35 IN/LB	3 GA.	3 GA.	100/60A	3 GA.	3 GA.	3 GA.	100/60A

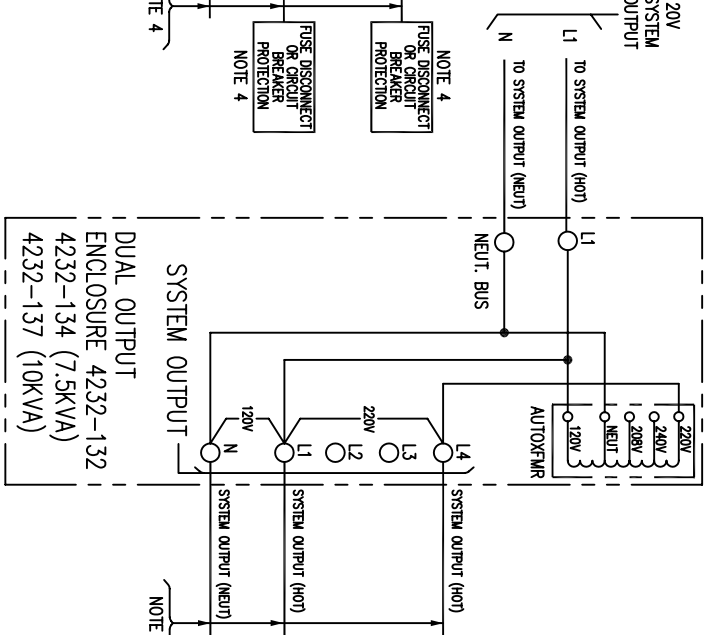
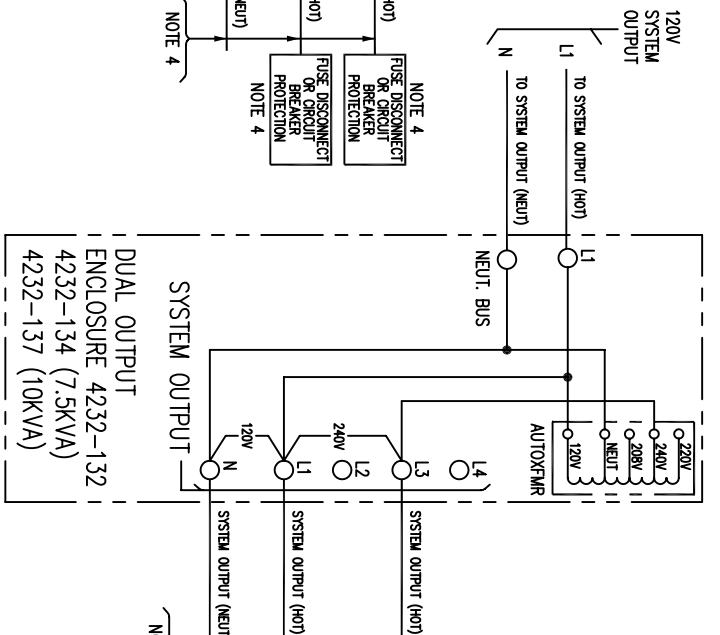
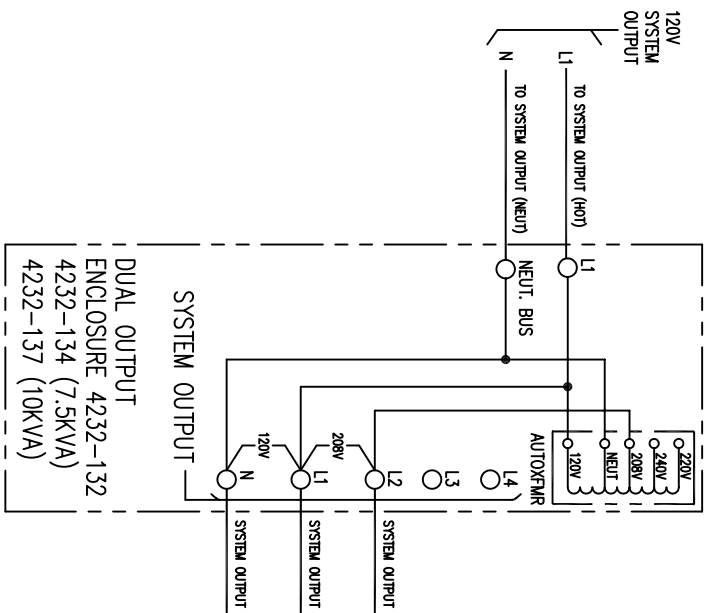
SIZE	120/240V ENCLOSURE OUTPUT										
	OUTPUT VOLTAGE	FULL LOAD CURRENT (AMPS)	TERM. CAPACITY	TORQUE	RECM. SIZE	RECM. GRD. SIZE	RECM. FUSING	RECM. TORQUE	RECM. SIZE	RECM. GRD. SIZE	RECM. FUSING
2KVA	120/240V	16.6/8.3	12-2 AWG	35 IN/LB	12 GA.	12 GA.	20/15A	12 GA.	12 GA.	12 GA.	35/20A
3KVA	120/240V	25/12.5	12-2 AWG	35 IN/LB	8 GA.	10 GA.	35/20A	8 GA.	10 GA.	10 GA.	60/30A
5KVA	120/240V	42/21	12-2 AWG	35 IN/LB	6 GA.	6 GA.	60/30A	6 GA.	6 GA.	6 GA.	80/50A
7.5KVA	120/240V	62.5/31	12-2 AWG	35 IN/LB	6 GA.	6 GA.	80/40A	6 GA.	6 GA.	6 GA.	100/60A
10KVA	120/240V	83.3/42	12-2 AWG	35 IN/LB	3 GA.	3 GA.	100/60A	3 GA.	3 GA.	3 GA.	100/60A

SIZE	120/220V ENCLOSURE OUTPUT										
	OUTPUT VOLTAGE	FULL LOAD CURRENT (AMPS)	TERM. CAPACITY	TORQUE	RECM. SIZE	RECM. GRD. SIZE	RECM. FUSING	RECM. TORQUE	RECM. SIZE	RECM. GRD. SIZE	RECM. FUSING
2KVA	120/220V	16.6/9	12-2 AWG	35 IN/LB	12 GA.	12 GA.	20/15A	12 GA.	12 GA.	12 GA.	35/20A
3KVA	120/220V	25/13.6	12-2 AWG	35 IN/LB	8 GA.	10 GA.	35/20A	8 GA.	10 GA.	10 GA.	60/30A
5KVA	120/220V	42/23	12-2 AWG	35 IN/LB	6 GA.	6 GA.	60/30A	6 GA.	6 GA.	6 GA.	80/50A
7.5KVA	120/220V	62.5/34	12-2 AWG	35 IN/LB	6 GA.	6 GA.	80/50A	6 GA.	6 GA.	6 GA.	100/60A
10KVA	120/220V	83.3/45.5	12-2 AWG	35 IN/LB	3 GA.	3 GA.	100/60A	3 GA.	3 GA.	3 GA.	100/60A

SIZE	BYPASS SWITCH INPUT									
	AC INPUT CURRENT	MAX. LOAD CURRENT	TERM. CAPACITY	TORQUE	RECM. SIZE	RECM. FUSING	RECM. TORQUE	RECM. SIZE	RECM. GRD. SIZE	RECM. FUSING
2KVA	120	16.6 AMPS	12-2 AWG	35 IN/LB	10 GA.	20A	10 GA.	10 GA.	10 GA.	10 GA.
3KVA	120	25 AMPS	12-2 AWG	35 IN/LB	8 GA.	35A	8 GA.	8 GA.	8 GA.	8 GA.
5KVA	120	42 AMPS	12-2 AWG	35 IN/LB	6 GA.	60A	6 GA.	6 GA.	6 GA.	6 GA.
7.5KVA	120	62.5 AMPS	12-2 AWG	35 IN/LB	6 GA.	80A	6 GA.	6 GA.	6 GA.	6 GA.
10KVA	120	83.3 AMPS	12-2 AWG	35 IN/LB	3 GA.	100A	3 GA.	3 GA.	3 GA.	3 GA.

- NOTES:
- 1 WIRE SIZE RECOMMENDATIONS BASED ON 90°C COPPER CONDUCTORS OPERATING IN 30°C AMBIENT AND NEC TABLES 250-95 & 310-16. INCREASE CONDUCTOR SIZE FOR LONG RUNS.
 - 2 ALL FIELD WIRING TO BE COPPER CONDUCTOR ONLY.
 - 3 ALL GROUNDS SHOWN SHALL BE CONNECTED SEPARATELY TO A SINGLE GROUNDING POINT AT THE SOURCE SERVICE EQUIPMENT, PER IEEE STD. 446-1980 FIG. 72.
 - 4 FUSE DISCONNECT OR CIRCUIT BREAKER PROTECTION EXTERNAL TO UPS TO BE PROVIDED BY CUSTOMER. SEE TABLE BELOW FOR RECOMMENDED PROTECTION SIZING AND WIRE SIZING.
 - 5 SPECIFIED TORQUE VALUES ARE FOR INTERNAL WIRING CONNECTIONS ONLY.

120V BYPASS/ DUAL OUTPUT INSTALLER CONNECTIONS	SHEET 4 OF 5	ISSUE
IC4232-137		
IC4232-136		
IC4232-135		
IC4232-134		
IC4232-133		
IC4232-132		
IC4232-131		
IC4232-130		



SIZE	120/208V ENCLOSURE OUTPUT				
	OUTPUT VOLTAGE	FULL LOAD CURRENT (AMPS)	TERM. CAPACITY	TORQUE	RECM. FUSING
2KVA	120/208V	16.6/9.6	12-2 AWG	35 IN/LB	20/15A
3KVA	120/208V	25/14.5	12-2 AWG	35 IN/LB	35/20A
5KVA	120/208V	42/24	12-2 AWG	35 IN/LB	60/30A
7.5KVA	120/208V	62.5/36	12-2 AWG	35 IN/LB	80/50A
10KVA	120/208V	83.3/48	12-2 AWG	35 IN/LB	100/60A

SIZE	120/240V ENCLOSURE OUTPUT				
	OUTPUT VOLTAGE	FULL LOAD CURRENT (AMPS)	TERM. CAPACITY	TORQUE	RECM. FUSING
2KVA	120/240V	16.6/8.3	12-2 AWG	35 IN/LB	20/15A
3KVA	120/240V	25/12.5	12-2 AWG	35 IN/LB	35/20A
5KVA	120/240V	42/21	12-2 AWG	35 IN/LB	60/30A
7.5KVA	120/240V	62.5/31	12-2 AWG	35 IN/LB	80/40A
10KVA	120/240V	83.3/42	12-2 AWG	35 IN/LB	100/60A

SIZE	120/220V ENCLOSURE OUTPUT				
	OUTPUT VOLTAGE	FULL LOAD CURRENT (AMPS)	TERM. CAPACITY	TORQUE	RECM. FUSING
2KVA	120/220V	16.6/9	12-2 AWG	35 IN/LB	20/15A
3KVA	120/220V	25/13.6	12-2 AWG	35 IN/LB	35/20A
5KVA	120/220V	42/23	12-2 AWG	35 IN/LB	60/30A
7.5KVA	120/220V	62.5/34	12-2 AWG	35 IN/LB	80/50A
10KVA	120/220V	83.3/45.5	12-2 AWG	35 IN/LB	100/60A

- NOTES:
- 1 WIRE SIZE RECOMMENDATIONS BASED ON 90°C COPPER CONDUCTORS OPERATING IN 30°C AMBIENT AND NEC TABLES 250-95 & 310-16, INCREASE CONDUCTOR SIZE FOR LONG RUNS.
 - 2 ALL FIELD WIRING TO BE COPPER CONDUCTOR ONLY.

- 3 ALL GROUNDS SHOWN SHALL BE CONNECTED SEPARATELY TO A SINGLE GROUNDING POINT AT THE SOURCE SERVICE EQUIPMENT, PER IEEE STD. 446-1980 FIG. 72.
- 4 FUSE DISCONNECT OR CIRCUIT BREAKER PROTECTION EXTERNAL TO UPS TO BE PROVIDED BY CUSTOMER. SEE TABLE BELOW FOR RECOMMENDED PROTECTION SIZING AND WIRE SIZING.
- 5 SPECIFIED TORQUE VALUES ARE FOR INTERNAL WIRING CONNECTIONS ONLY.

DUAL OUTPUT	INSTALLER CONNECTIONS
4232-137	IC4232-137
4232-136	IC4232-136
4232-134	IC4232-134
4232-133	IC4232-133
4232-132	IC4232-132
4232-131	IC4232-131
4232-130	IC4232-130