

FRONT

SIDE

PHYSICAL INSTALLATION

1. MOUNT BATTERY ENCLOSURE AND INVERTER ENCLOSURE TO RACK USING 12-24 SCREWS, LOCK WASHERS AND FLAT WASHERS.

GENERAL NOTES:

- 1 ALL DIMENSIONS ARE IN INCHES UNLESS OTHERWISE SPECIFIED.

MECHANICAL DATA

UPS WEIGHT: 250 LBS..3KVA

BATTERY CAB. WEIGHT: 380 LBS

SIZE: SEE DRAWING
 PAINT: SHERWIN WILLIAMS PT. No. F53 A 33
 COLOR: PROFILE GRAY

THERMAL DATA

HEAT DISSIPATION @ 100% LOAD
 @ .8 LAGGING PF
 3KVA = 2.2K BTU/HR MAX.

COOLING: FAN ASSISTED
 OPERATING AMBIENT= -10°C TO +40°C

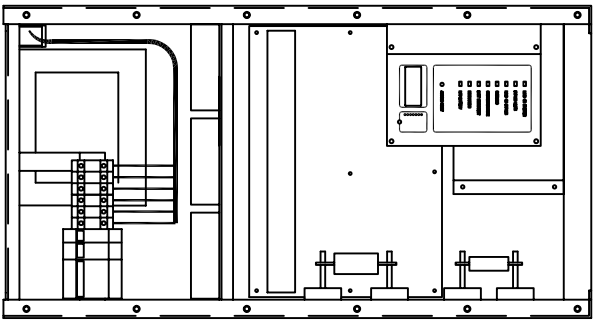
ENVIRONMENTAL DATA

NEMA 1= INDOOR DUTY, OPEN VENTILATED,
 NONCORROSIVE, CONTROLLED
 ENVIRONMENT PER UL1778, DOES
 NOT PREVENT ENTRY OF DUST.
 HUMIDITY RANGE: 0 TO 95% NON-CONDENSING
 ALTITUDE DERATING: NONE BELOW 7000 FT.
 10%/1000 FT. ABOVE
 AUDIBLE NOISE: 50dB(A), 5 FT. IN FRONT
 OF UNIT, 4 FT. FROM FLOOR.

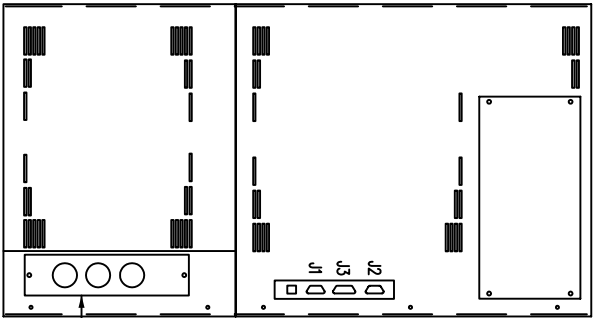
RACK MOUNT INVERTER
 INSTALLER CONNECTIONS

DESIGN	DATE	DATE	ISSUE
DRAWN WALLACE	DATE 1-8-98	IC5196-103	ISSUE
CHKD	DATE		
APPD K. AMOROG	DATE 8-98	SHEET 1 of 3	

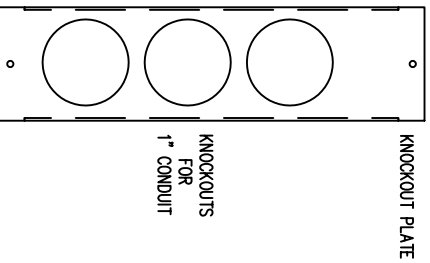
FRONT VIEW
(COVER REMOVED)



REAR VIEW



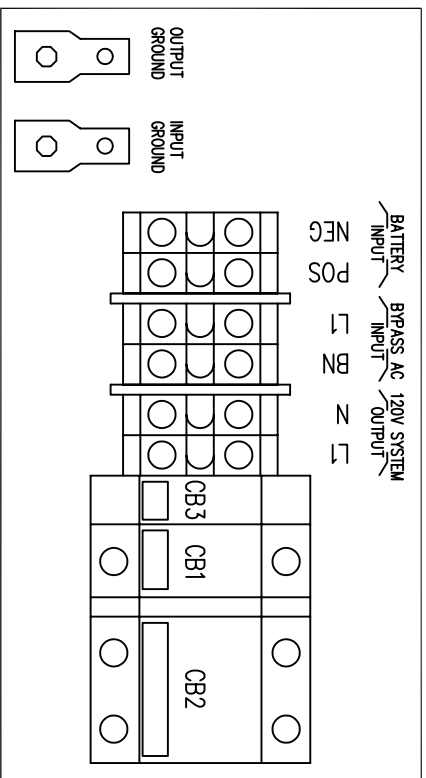
NOTE: USER CONNECTIONS ENTER INV. THROUGH KNOCKOUT PLATE ON REAR CABINET PANEL. ROUTE WIRES THRU WIREWAY PROVIDED ON LEFT SIDE OF BASE AND SECURE IN TOP OF TERMINAL BLOCKS AT RIGHT, FRONT OF ENCLOSURE.



KNOCKOUT PLATE

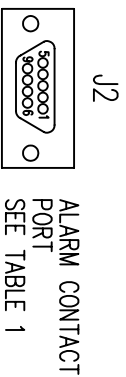
(J2) PIN No.	ALARM
5	COMMON
6	ON BYPASS (N.O.)
7	LOW BATTERY (N.O.)
8	GEN. ALARM (N.O.)
9	UTILITY FAIL (N.O.)

LOWER RIGHT, FRONT (INVERTER)



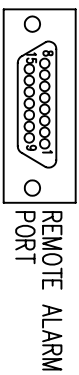
BYPASS AC INPUT VOLTAGE 120V	CONNECT TO L1 & (BN NEUTRAL)	SYSTEM OUTPUT 120V	CONNECT TO L1 & N	BATTERY INPUT 125VDC	CONNECT TO POS & NEG
---------------------------------	---------------------------------	-----------------------	----------------------	-------------------------	-------------------------

RIGHT, REAR (INVERTER)



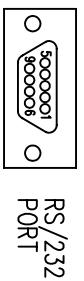
J2

ALARM CONTACT PORT
SEE TABLE 1

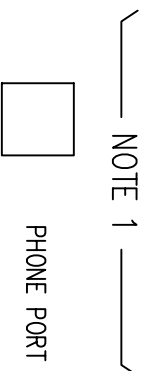


J3

REMOTE ALARM PORT



RS/232 PORT



PHONE PORT

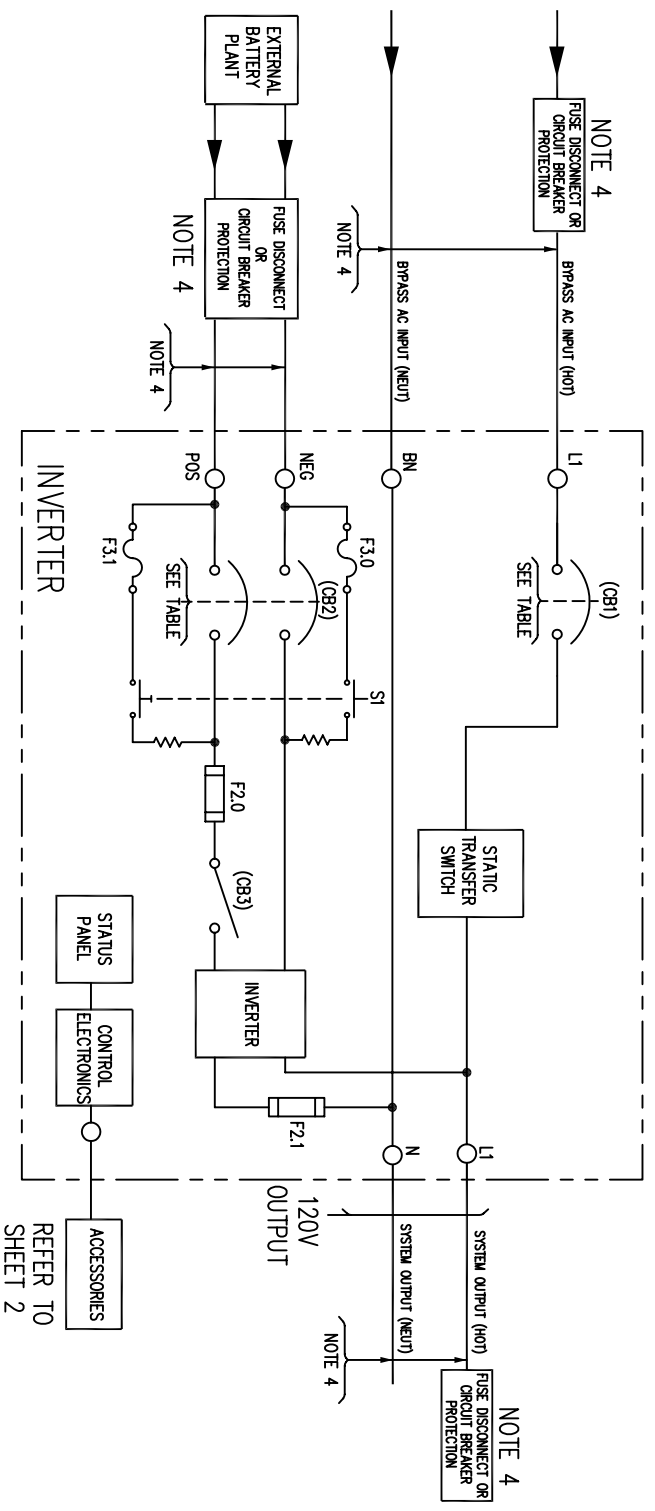
NOTE 1

NOTES:
1 NOT TO EXCEED CLASS 2 LIMITATIONS. REFER TO N.E.C. ARTICLE 725-31 AND TABLE (A) & (B).

RACK MOUNT
INSTALLER CONNECTIONS

IC5196-103

SHEET 2 OF 3 ISSUE



- NOTES:
- 1 WIRE SIZE RECOMMENDATIONS BASED ON 90°C COPPER CONDUCTORS OPERATING IN 30°C AMBIENT AND NEG. TABLES 250-95 & 310-16, INCREASE CONDUCTOR SIZE FOR LONG RUNS.
 - 2 ALL FIELD WIRING TO BE COPPER CONDUCTOR ONLY.
 - 3 ALL GROUNDS SHOWN SHALL BE CONNECTED SEPARATELY TO A SINGLE GROUNDING POINT AT THE SOURCE SERVICE EQUIPMENT, PER IEEE STD. 446-1980 FIG. 72.
 - 4 FUSE DISCONNECT OR CIRCUIT BREAKER PROTECTION EXTERNAL TO UPS TO BE PROVIDED BY CUSTOMER, SEE TABLE BELOW FOR RECOMMENDED PROTECTION SIZING AND WIRE SIZING.
 - 5 SPECIFIED TORQUE VALUES ARE FOR INTERNAL WIRING CONNECTIONS ONLY.

SIZE SPEC. No.	BYPASS AC INPUT					BATTERY LEAD					SYSTEM OUTPUT												
	TERM. No. (L1, BN)	MAX. INPUT CURRENT	(CB1) RATING	A.L.C. RATING	TERM. CAPACITY	TORQUE	RECM. SIZE	RECM. FUSING	RECM. GRD. SIZE	(CB2) RATING	NOMINAL VOLTAGE	A.L.C. RATING	TERM. CAPACITY	TORQUE	RECM. SIZE	RECM. FUSING	RECM. GRD. SIZE	RECM. FUSING					
5196-103	120V	25 AMPS	32A	10,000	18-2 AWG	25 IN/LB	8 GA.	35A	10 GA.	32A	120VDC	10,000	18-2 AWG	25 IN/LB	8 GA.	32A	120V	25 AMPS	12-4 AWG	25 IN/LB	8 GA.	10 GA.	35 AMPS