

Notes: Unless otherwise specified, dimensions are in inches. Dimensions within brackets [ ] are in millimeters.  
 Recommended clearance for serviceability is 36" [914] on the left side, 18" [457.2] on the right side and 18" [457.2] at the back of the system.

**LTI Power Systems, Inc.**

TEL. (440) 327-5050

10800 Middle Ave. Elyria, Ohio 44035

PROUPS B800 ENCLOSURE  
10-40KVA

10KVA WEIGHT: 860 LBS. (390 kg)  
 15KVA WEIGHT: 950 LBS. (431 kg)  
 20KVA WEIGHT: 1058 LBS. (480 kg)  
 30KVA WEIGHT: 1150 LBS. (522 kg)  
 40KVA WEIGHT: 1220 LBS. (554 kg)

LTI - PROUPS

CAD DWG NAME: RK333-A2

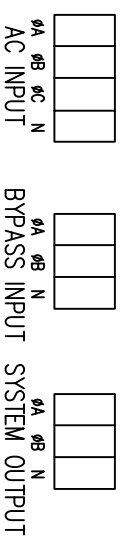
REV.

2

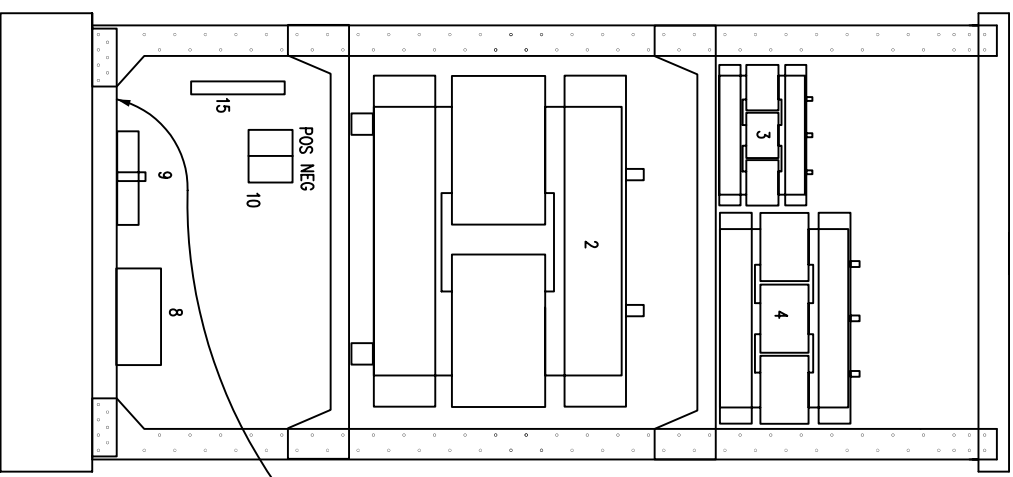
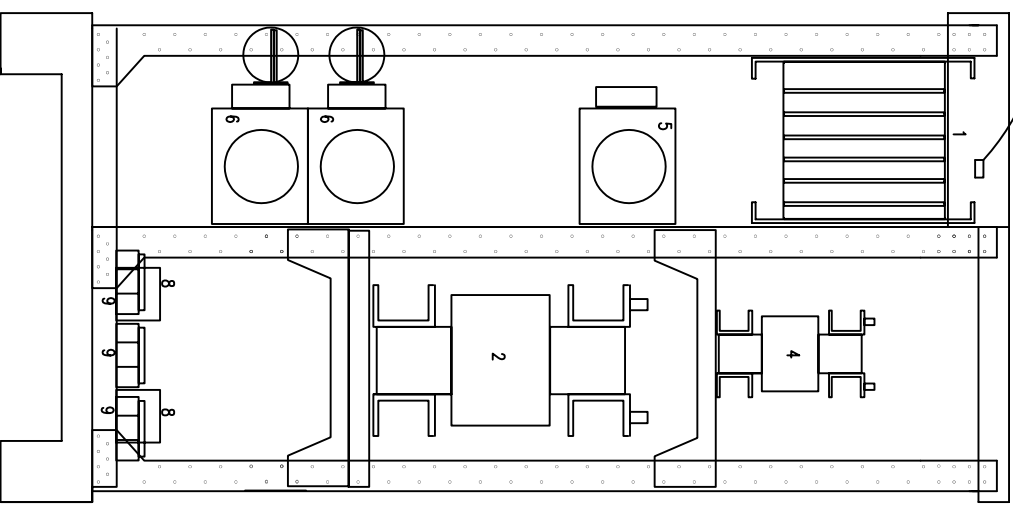
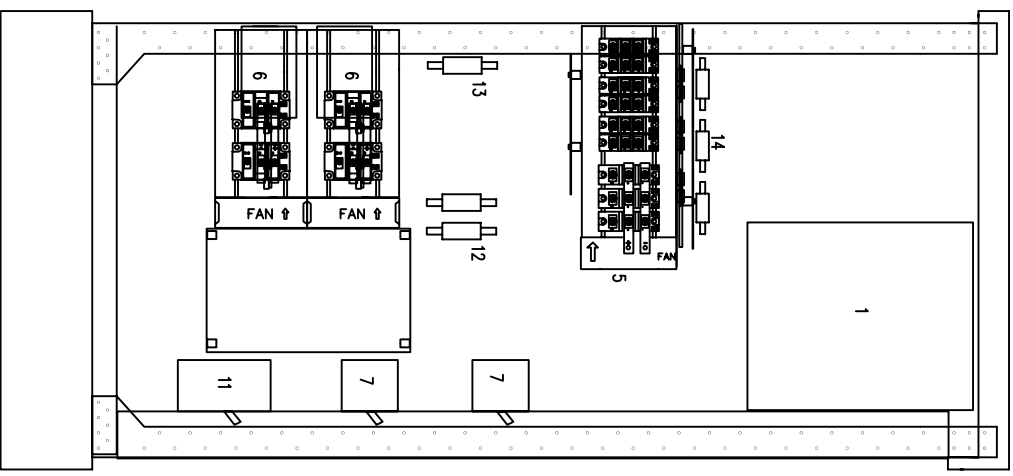
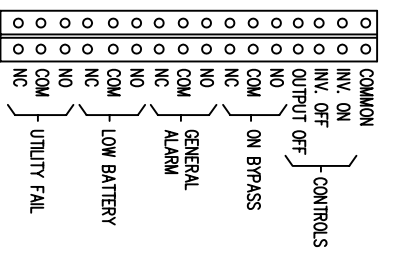
- 1 - ELECTRONICS RACK
- 2 - INVERTER TRF.
- 3 - AC CHOKE
- 4 - AUTOTRMR.
- 5 - RECT/SWAT. SWITCH POWER PACKS
- 6 - INVERTER POWER PACK
- 7 - MGBS
- 8 - RFI FILTERS

- 9 - TERMINALS
- 10 - BATTERY TERMINALS
- 11 - BATTERY BREAKER
- 12 - INVERTER FUSES
- 13 - RECTIFIER FUSE
- 14 - pf CORRECTION FUSES
- 15 - RELAY INTERFACE TERMINALS

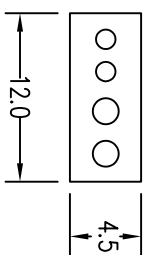
TERMINATION CONFIGURATION (BOTTOM, FRONT)  
 TERMINAL BLOCK CAPACITY: 2/0 TO 14 GA.



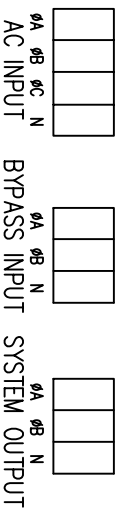
RELAY INTERFACE TERMINATIONS  
 RELAYS RATED 1A @ 24VDC, 0.5A @ 120VAC RESISTIVE  
 TERMINAL CAPACITY: 14 TO 20 AWG.



10KVA CONFIGURATION  
 1/2" CONDUIT (BATTERY)  
 1/2" CONDUIT (AC)  
 3/4" CONDUIT (BYPASS)  
 3/4" CONDUIT (OUTPUT)

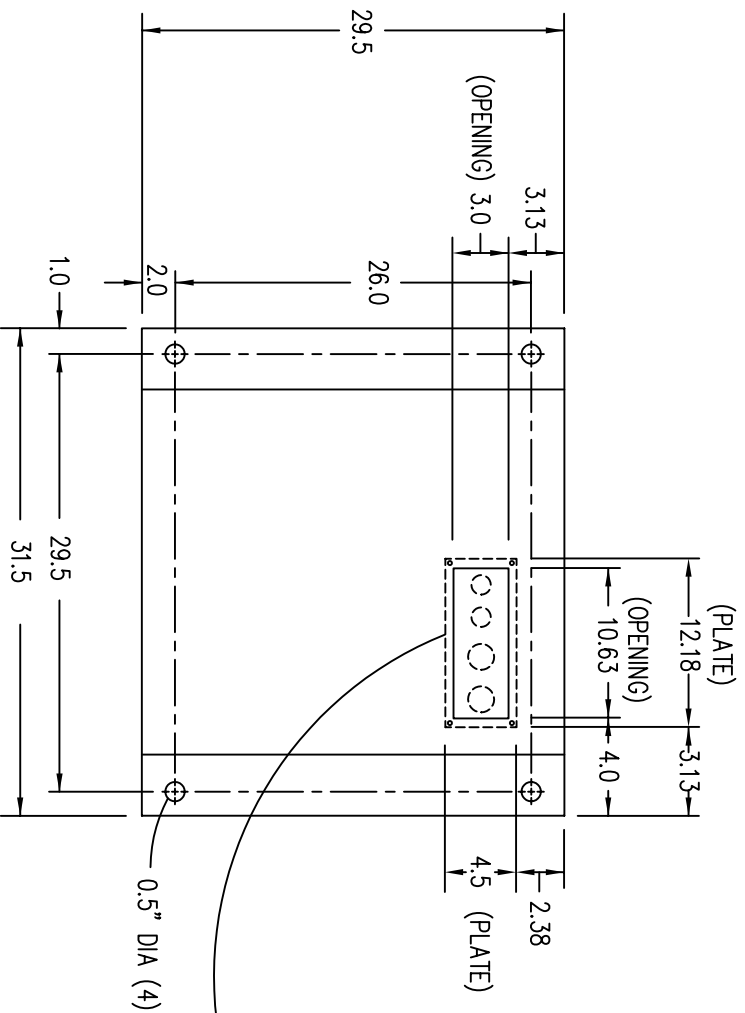


TERMINATION CONFIGURATION (BOTTOM, FRONT)  
 TERMINAL BLOCK CAPACITY: 2/0 TO 14 GA.

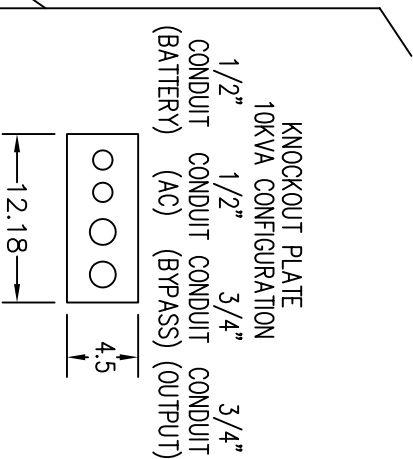


NOTE: ALL DIMENSIONS ARE IN INCHES UNLESS OTHERWISE SPECIFIED.

FRONT

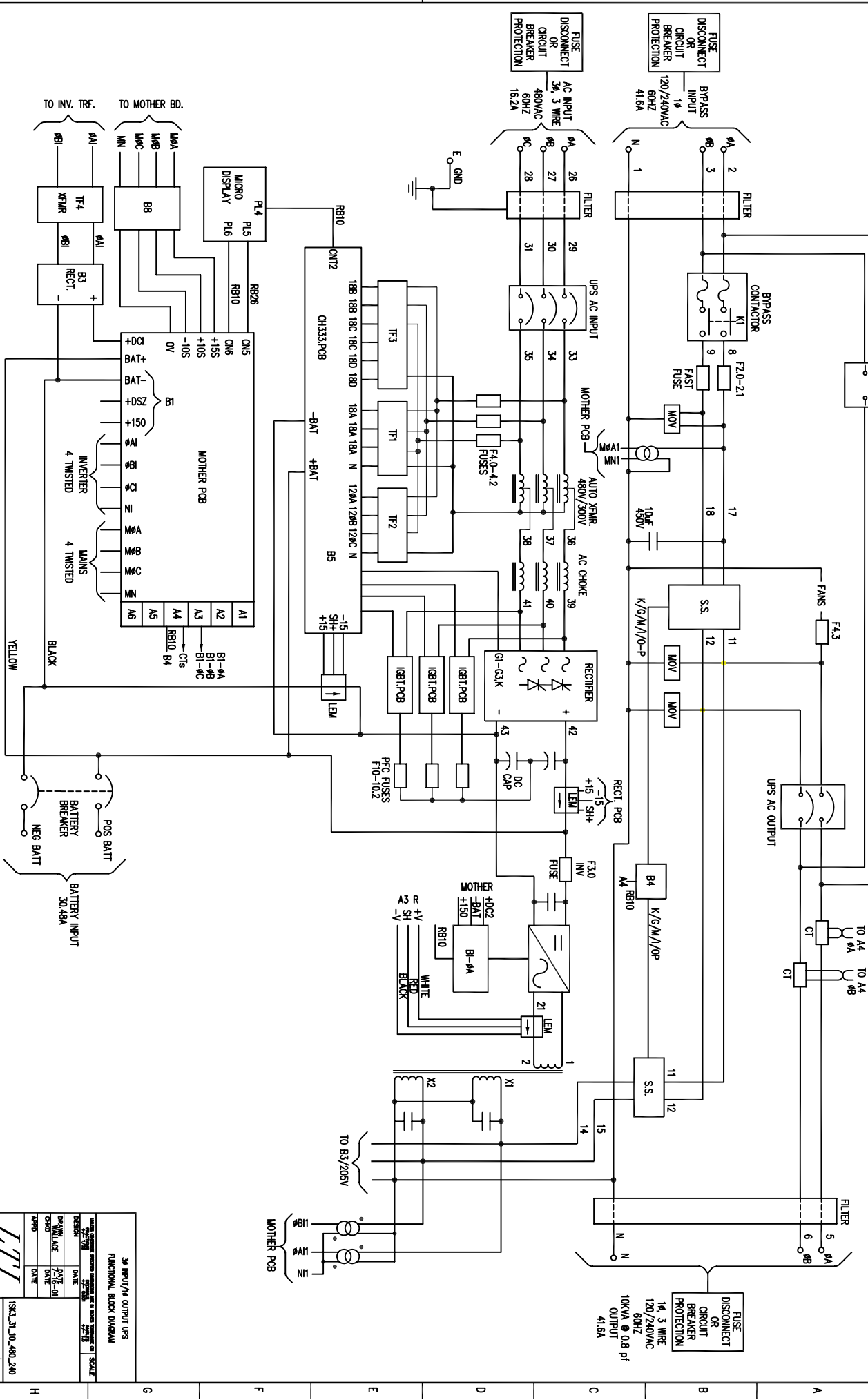


(VIEW FROM BOTTOM OF CABINET)



NOTES:  
 1. WIRE SIZES BASED ON 90°C COPPER CONDUCTORS OPERATING IN 30°C AMBIENT AND NEC TABLES 250-95 AND 310-16. INCREASE CONDUCTOR SIZE FOR LONG RUNS.  
 2. CLOCKWISE PHASE ROTATION MUST BE OBSERVED FOR BYPASS AND AC INPUTS.

AC INPUT	MAX. INPUT CURRENT	CKT. BRKR. RATING	A.I.C. RATING	TEMP. CAPACITY	TORQUE	RECOM. SIZE	RECOM. FUSING SIZE	RECOM. GND. SIZE	RECOM. CONDUIT
480V	16.2A	20A	10,000	14-2/0 AWG	75 IN./LBS	10 AWG	30A	8 AWG	1/2"
BYPASS INPUT/AC OUTPUT	41.6A	50A	10,000	14-2/0 AWG	75 IN./LBS	10 AWG	30A	8 AWG	1/2"
120/240V	41.6A	50A	10,000	14-2/0 AWG	75 IN./LBS	10 AWG	30A	8 AWG	1/2"
DC INPUT	30.48A	40A	10,000	14-2/0 AWG	75 IN./LBS	10 AWG	30A	8 AWG	1/2"



1 2 3 4 5 6 7 8 9

TO INV. TRF. TO MOTHER BD.

PL4 PL5 MICRO DISPLAY PL6

RB26 RB10 CN5 CN6 +155 +105 -105 0V

MOTHER PCB

BI +DC BATT+ BATT- +DSZ +150

INVERTER 4 TWISTED MAINS 4 TWISTED

BI A1 A2 A3 A4 A5 A6 BI-4A BI-4B BI-4C BI-4D C18 RB10 B4

BLACK YELLOW

POS BATT BATTERY BREAKER BATTERY INPUT 30.48A NEG BATT

RECT. PCB INV. F3.0 B4 K/G/M//O/P RB10

TO B3/205V

MOTHER PCB

1 2 3 4 5 6 7 8 9

15K.31.10.480.240

ISSUE SHEET 1 OF 1

3Φ INPUT/4 OUTPUT UPS  
 FUNCTIONAL BLOCK DIAGRAM

DATE: 12/18/01  
 DRAWN BY: JAL/EO  
 CHECKED BY: JAL/EO  
 DATE: 12/18/01

POWER SYSTEMS, INC.  
 ELYRIA, OHIO 44035-2214