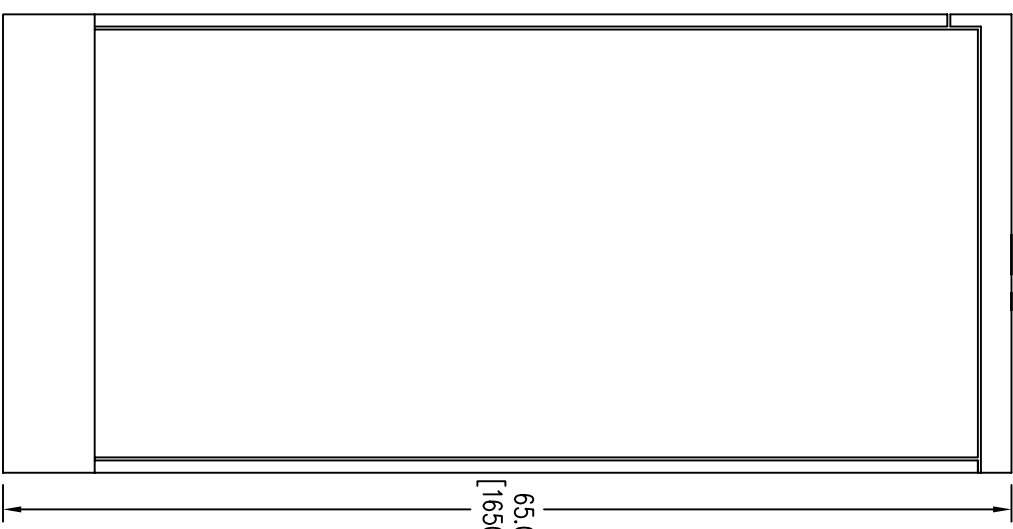


LEFT



FRONT



RIGHT

Notes: Unless otherwise specified, dimensions are in inches. Dimensions within brackets [ ] are in millimeters.  
 Recommended clearance for serviceability is 36" [914] on the left side, 18" [457.2] on the right side and 18" [457.2] at the back of the system.

**LTI Power Systems, Inc.**

PROUPS B800 ENCLOSURE  
 10KVA INVERTER      10KVA WEIGHT: 1100 LBS. (495 kg)

LTI - PROUPS

REV.  
 1

TEL. (440) 327-5050

10800 Middle Ave. Elyria, Ohio 44035

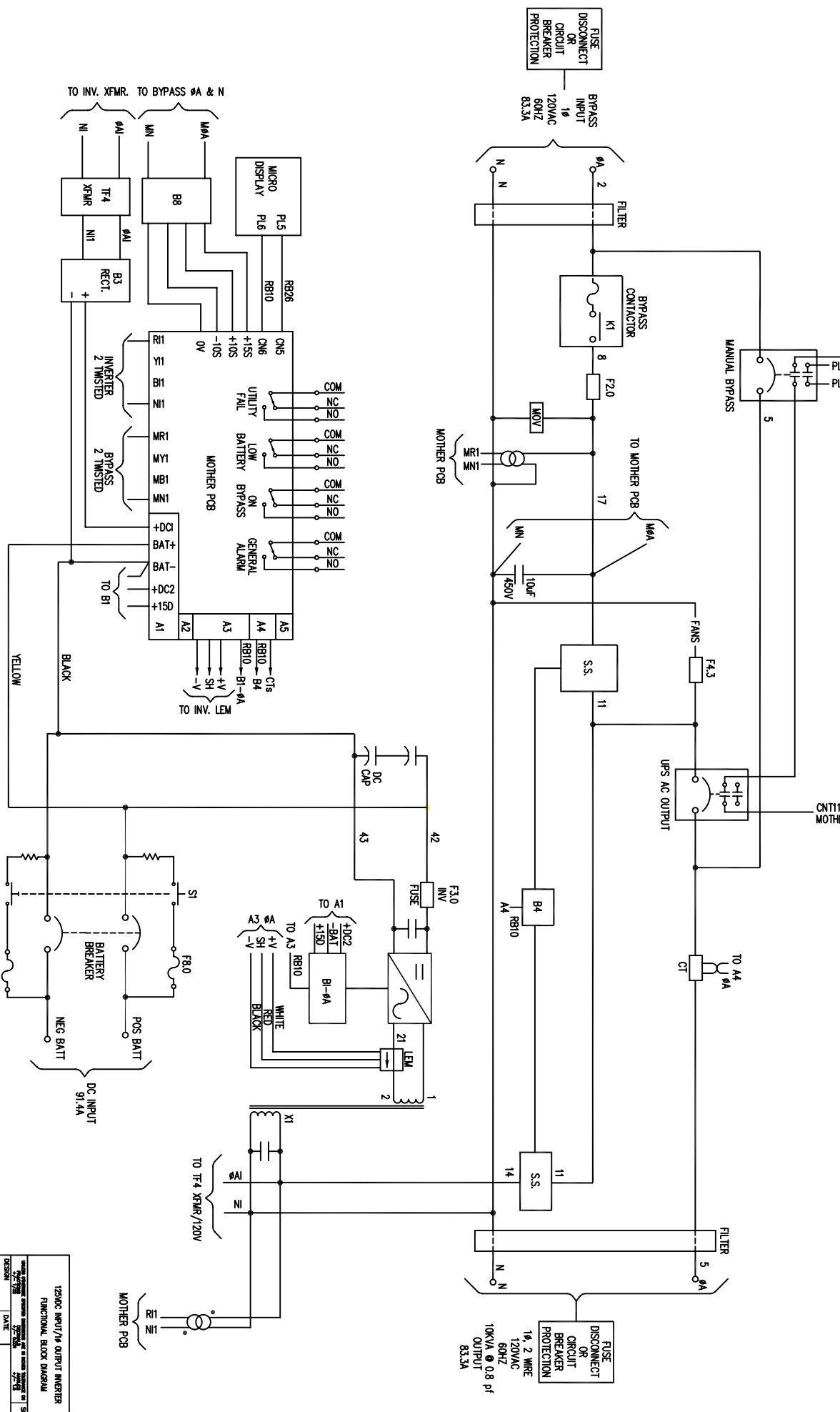
CAD DWG NAME: RK333-10KINV





- NOTES:
1. WIRE SIZES BASED ON 90°C COPPER CONDUCTORS OPERATING IN 30°C AMBIENT AND NEC TABLES 250-95 AND 310-16. INCREASE CONDUCTOR SIZE FOR LONG RUNS.
  2. CLOCKWISE PHASE ROTATION MUST BE OBSERVED FOR BYPASS INPUT.

BYPASS AC INPUT	MAX. INPUT CURRENT	PCT. BRK. RATING	A.I.C. RATING	TERM. CAPACITY	TORQUE	RECOM. SIZE	RECOM. FUSING	RECOM. CONDUIT
120V	83.3A	100A	25,000	2/0-14 AWG	50 IN/LBS	2 AWG	125A	8 AWG
AC OUTPUT	MAX. CURRENT	PCT. BRK. RATING	A.I.C. RATING	TERM. CAPACITY	TORQUE	RECOM. SIZE	RECOM. FUSING <td>RECOM. CONDUIT</td>	RECOM. CONDUIT
120V	83.3A	100A	25,000	2/0-14 AWG	50 IN/LBS	2 AWG	125A	8 AWG
DC INPUT	MAX. CURRENT	PCT. BRK. RATING	A.I.C. RATING	TERM. CAPACITY	TORQUE	RECOM. SIZE	RECOM. FUSING <td>RECOM. CONDUIT</td>	RECOM. CONDUIT
125V	91.4A	125A	25,000	2/0-14 AWG	50 IN/LBS	1 AWG	150A	1-1/4"



120VAC INPUT/OUTPUT INVERTER  
FUNCTIONAL BLOCK DIAGRAM

DESIGN	DATE
DRAWN	DATE
CHECKED	DATE
APP'D	DATE

POWER SYSTEMS, INC.  
EASTON, MA 01025-2511

ISSUE SHEET 1 OF 1