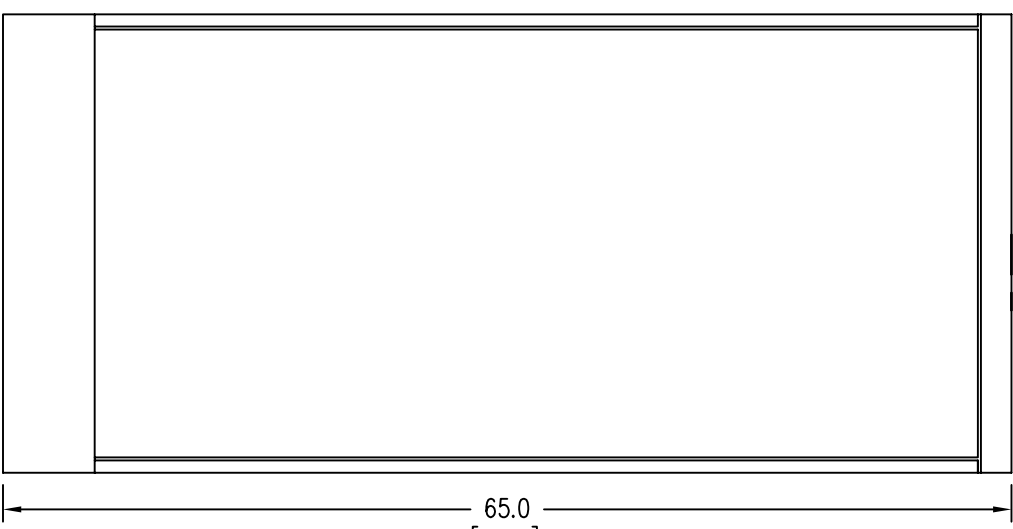


LEFT



FRONT



RIGHT

Notes: Unless otherwise specified, dimensions are in inches. Dimensions within brackets [] are in millimeters.
 Recommended clearance for serviceability is 36" [914] on the left side, 18" [457.2] on the right side and 18" [457.2] at the back of the system.

LTI Power Systems, Inc.

PROUPS B800 ENCLOSURE
 15KVA INVERTER 15KVA WEIGHT: 1100 LBS. (500 kg)

LTI - PROUPS

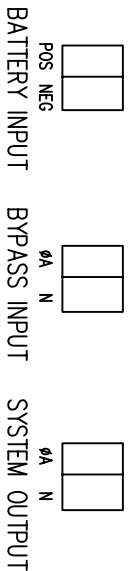
REV.
 1

TEL. (440) 327-5050

10800 Middle Ave. Elyria, Ohio 44035

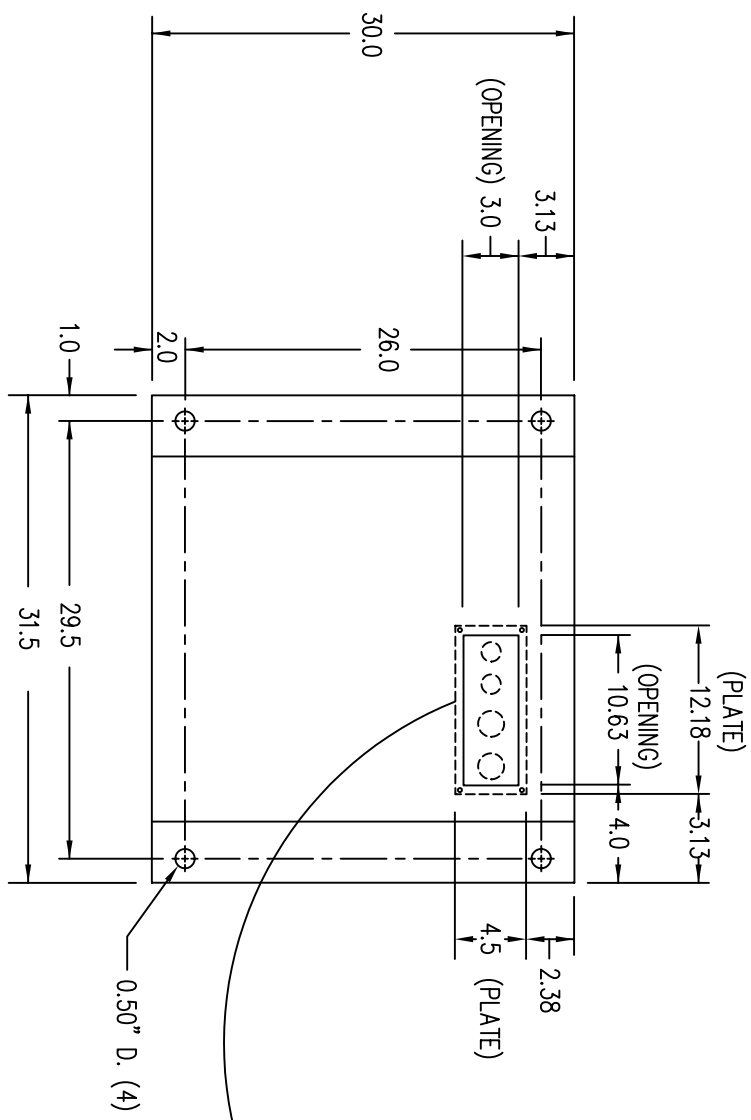
CAD DWG NAME: RK333-15KINV

TERMINATION CONFIGURATION (BOTTOM, FRONT)
 TERMINAL BLOCK CAPACITY: 350 MCM TO 6 GA.
 TERMINAL TORQUE: 275 IN/LBS.



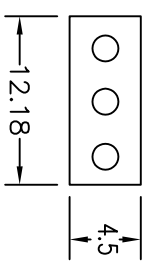
NOTE: ALL DIMENSIONS ARE IN INCHES UNLESS OTHERWISE SPECIFIED.

FRONT



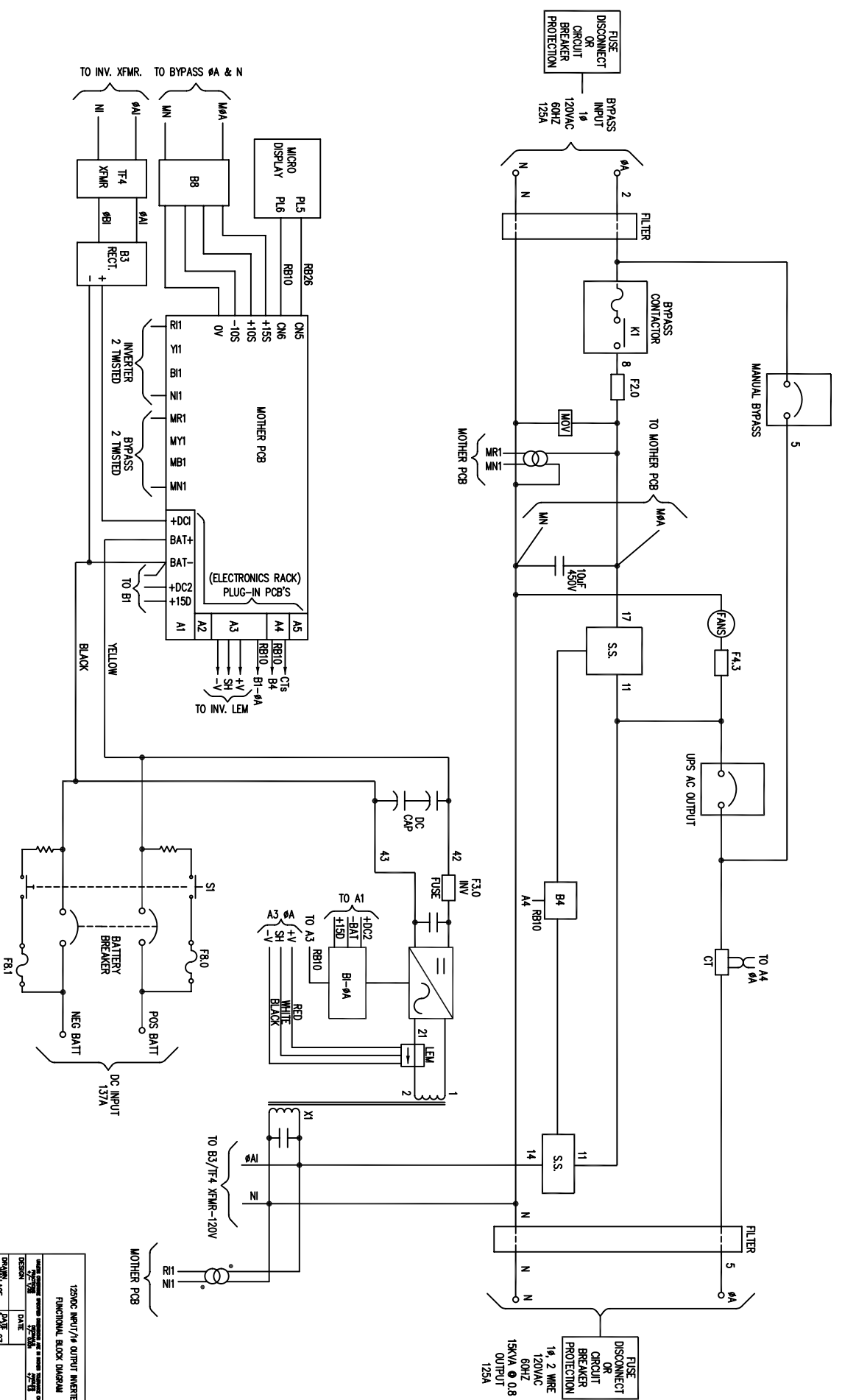
(VIEW FROM BOTTOM OF CABINET)

KNOCKOUT PLATE
 15KVA CONFIGURATION (120/120V)
 1-1/2" CONDUIT (BATTERY)
 1-1/4" CONDUIT (BYPASS)
 1-1/4" CONDUIT (OUTPUT)



NOTES:
 1. WIRE SIZES BASED ON 90°C COPPER CONDUCTORS OPERATING IN 30°C AMBIENT
 AND NEC TABLES 250-95 AND 310-16. INCREASE CONDUCTOR SIZE FOR LONG RUNS.

BYPASS AC INPUT	MAX. INPUT CURRENT	PCT. BRKR. RATING	A.L.C. RATING	TERM. CAPACITY	TORQUE	RECM. SIZE	RECM. FUSING	RECM. CONDUIT
120V	125A	150A	25,000	350 MCM - 6 AWG	275 IN/LBS	2/0 AWG	175A	1-1/4"
AC OUTPUT	MAX. BRKR. RATING	A.L.C. RATING		TERM. CAPACITY	TORQUE	RECM. SIZE	RECM. FUSING	RECM. CONDUIT
120V	125A	150A	25,000	350 MCM - 6 AWG	275 IN/LBS	2/0 AWG	175A	1-1/4"
DC INPUT	MAX. CURRENT <th colspan="2">A.L.C. RATING</th> <th>TERM. CAPACITY</th> <th>TORQUE</th> <th>RECM. SIZE</th> <th>RECM. FUSING</th> <th>RECM. CONDUIT</th>	A.L.C. RATING		TERM. CAPACITY	TORQUE	RECM. SIZE	RECM. FUSING	RECM. CONDUIT
125V	137A	175A	35,000	350 MCM - 6 AWG	275 IN/LBS	3/0 AWG	200A	1-1/2"



12500 WATT/1/4 OUTPUT INVERTER
 FUNCTIONAL BLOCK DIAGRAM

DATE	DATE	SCALE
DESIGNER	DATE	SCALE
CHECKED	DATE	SCALE
DATE	DATE	SCALE
DATE	DATE	SCALE

15,15H12, 12000C, INV
 SHEET 1 OF 1