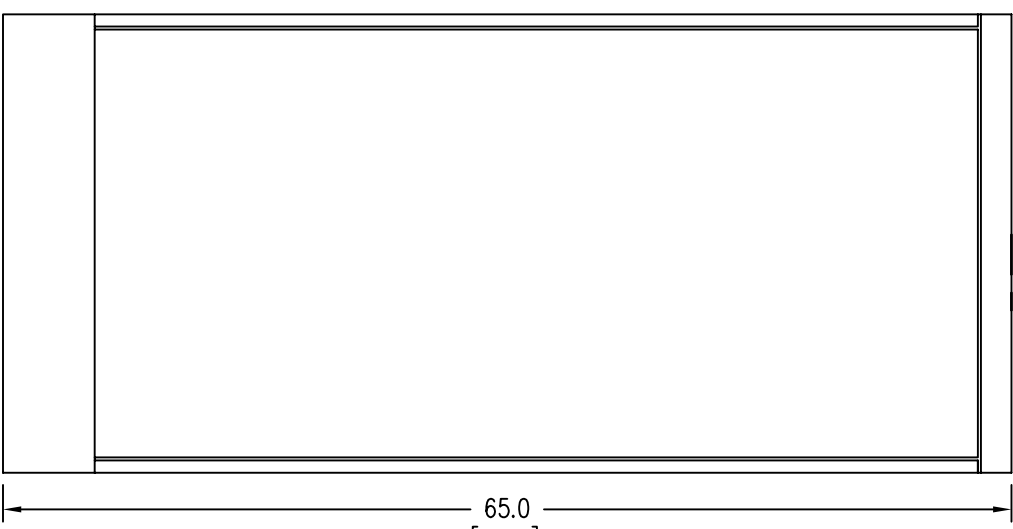


LEFT



FRONT



RIGHT

Notes: Unless otherwise specified, dimensions are in inches. Dimensions within brackets [] are in millimeters.
 Recommended clearance for serviceability is 36" [914] on the left side, 18" [457.2] on the right side and 18" [457.2] at the back of the system.

LTI Power Systems, Inc.

PROUPS B800 ENCLOSURE
 15KVA INVERTER 15KVA WEIGHT: 1100 LBS. (500 kg)

LTI - PROUPS

REV.
 1

TEL. (440) 327-5050

10800 Middle Ave. Elyria, Ohio 44035

CAD DWG NAME: RK333-15KINV

TERMINATION CONFIGURATION (BOTTOM, FRONT)

TERMINAL BLOCK CAPACITY (BYPASS INPUT/OUTPUT): 14 TO 2/0 GA.

TERMINAL TORQUE: 50 IN/LBS.

TERMINAL BLOCK CAPACITY (DC INPUT): 350 MCM TO 6 GA.

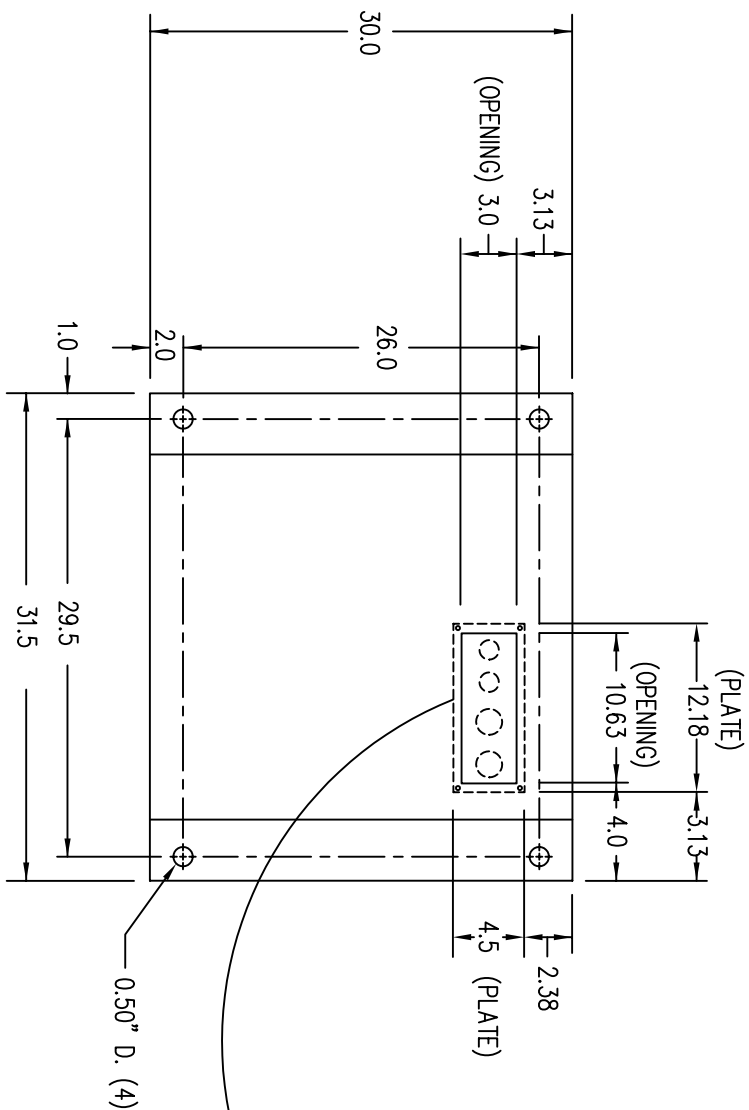
TERMINAL TORQUE: 275 IN/LBS.



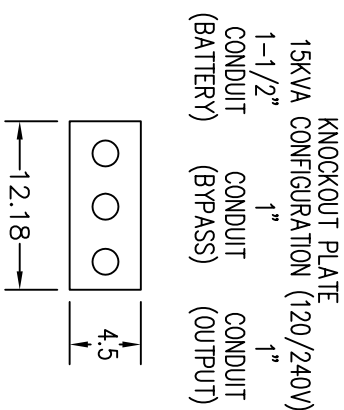
POS NEG BATTERY INPUT ØA ØB N SYSTEM OUTPUT

NOTE: ALL DIMENSIONS ARE IN INCHES UNLESS OTHERWISE SPECIFIED.

FRONT



(VIEW FROM BOTTOM OF CABINET)



LTI Power Systems, Inc.

TEL. (440) 327-5050

10800 Middle Ave. Bldg. B Elyria, Ohio 44035

15KVA INVERTER ASSEMBLY

SHEET 1 OF 1

LTI-PROUPS

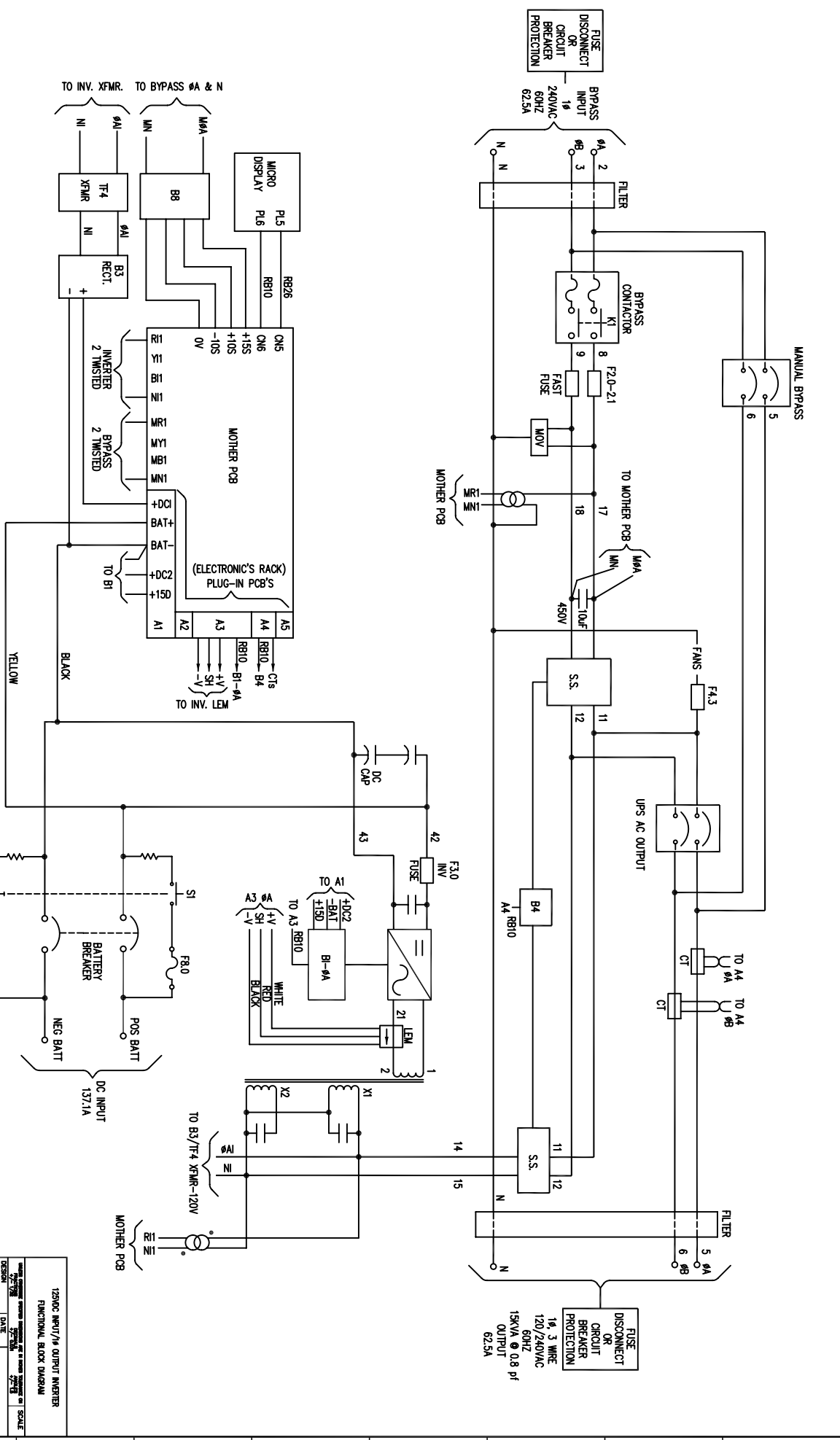
CAD DWG NAME: 15KINV_125BASE_240V

REV.

1

- NOTES:
1. WIRE SIZES BASED ON 90°C COPPER CONDUCTORS OPERATING IN 30°C AMBIENT AND NEC TABLES 250-95 AND 310-16. INCREASE CONDUCTOR SIZE FOR LONG RUNS.
 2. CLOCKWISE PHASE ROTATION MUST BE OBSERVED FOR BYPASS INPUT.

| BYPASS AC INPUT | MAX. BYPASS CURRENT | PCT. RTRG. RATING | A.L.C. RATING | TERM. CAPACITY | TORQUE | RECM. SIZE | RECM. FLTSING SIZE | RECM. GND. SIZE | RECM. CONDUIT |
|-----------------|---------------------|-------------------|---------------|----------------|------------|------------|--------------------|-----------------|---------------|
| 240V | 62.5A | 80A | 25,000 | 14-2/0 AWG | 50 IN/LBS | 3 AWG | 100A | 8 AWG | 1" |
| AC OUTPUT | MAX. BRKR. RATING | O.C.T. RATING | A.L.C. RATING | TERM. CAPACITY | TORQUE | RECM. SIZE | RECM. FLTSING SIZE | RECM. GND. SIZE | RECM. CONDUIT |
| 120/240V | 62.5A | 80A | 25,000 | 14-2/0 AWG | 50 IN/LBS | 3 AWG | 100A | 8 AWG | 1" |
| DC INPUT | MAX. BRKR. RATING | O.C.T. RATING | A.L.C. RATING | TERM. CAPACITY | TORQUE | RECM. SIZE | RECM. FLTSING SIZE | RECM. GND. SIZE | RECM. CONDUIT |
| 125V | 137.1A | 175A | 25,000 | 350MCM - 6 AWG | 275 IN/LBS | 3/0 AWG | 200A | 4 AWG | 1-1/2" |



12500C INVERT/CHG OUTPUT INVERTER
FUNCTIONAL BLOCK DIAGRAM

DATE: 2/27/88
DESIGNER: JAY M
DRAWN: JAY M
CHECKED: JAY M
DATE: 2/27/88

15K1.151224L.12500C
SHEET 1 OF 1

ISSUE