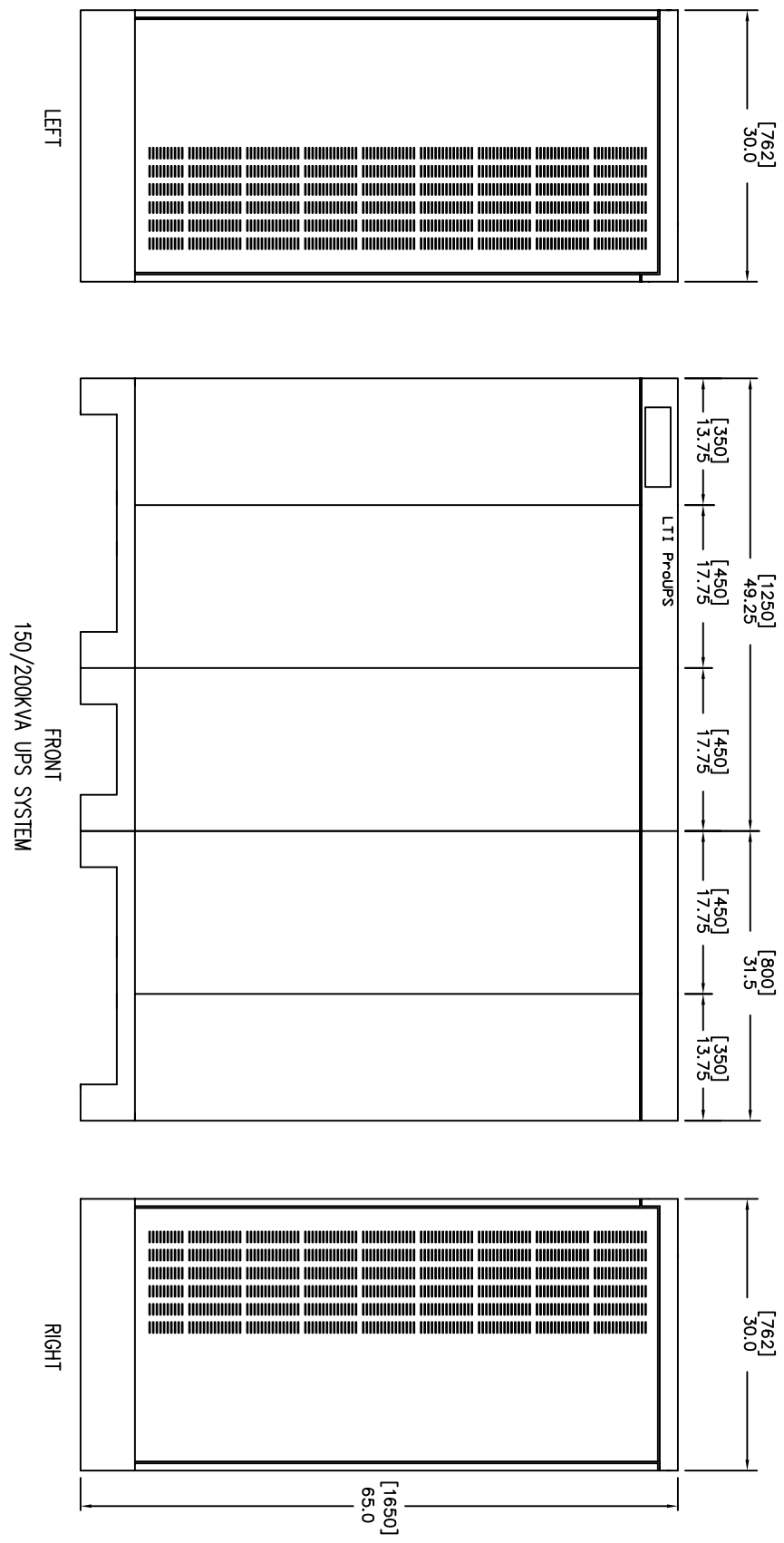


# LTI POWER SYSTEMS

- NOTES:
1. Unless otherwise specified, dimensions are in inches. Dimensions within brackets [ ] are in millimeters.
  2. Recommended space for serviceability is 30" [762] on the left side of the UPS cabinet, 30" [762] on the right side of the UPS cabinet and 18" [457] at the back of the system.



LEFT

FRONT

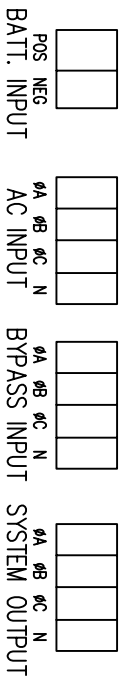
RIGHT

150/200KVA UPS SYSTEM

LTI ProUPS

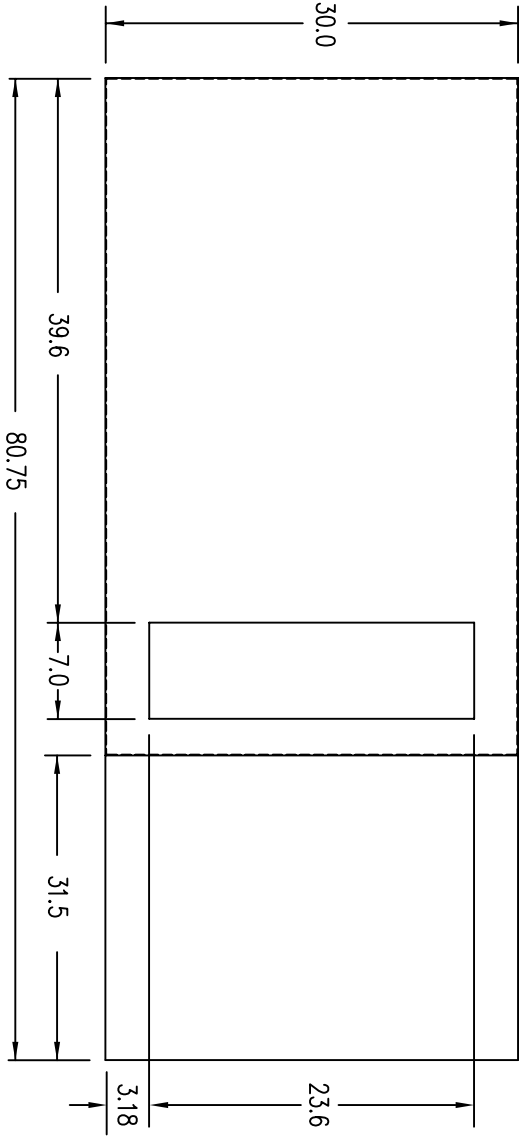


TERMINATION CONFIGURATION (BOTTOM, FRONT - UPS)  
 TERMINAL BLOCK CAPACITY: 500MCM TO 4 GA. (BYPASS/AC INPUTS)  
 TERMINAL BLOCK CAPACITY: (2) 4/0 TO (2) 6 GA. (SYSTEM OUTPUT)  
 TERMINAL BLOCK CAPACITY: (2) 500MCM TO (2) 4 GA. (BATTERY INPUT)



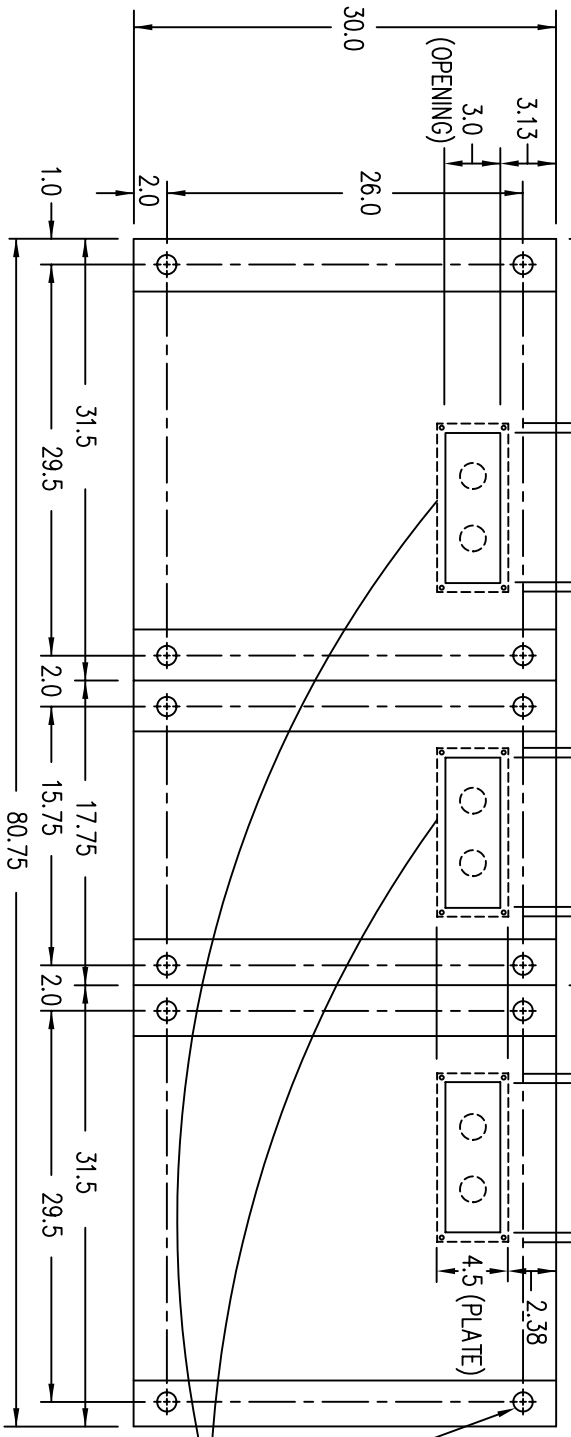
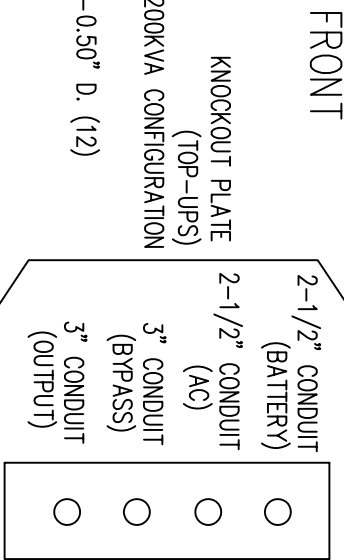
NOTE: ALL DIMENSIONS ARE IN INCHES UNLESS OTHERWISE SPECIFIED.  
 WHEN USING TOP CABLE ENTRY, ROUTE WIRES DOWN ALONG RIGHT SIDE OF CABINET TO BOTTOM, FRONT TERMINAL BLOCK LOCATION.

FRONT

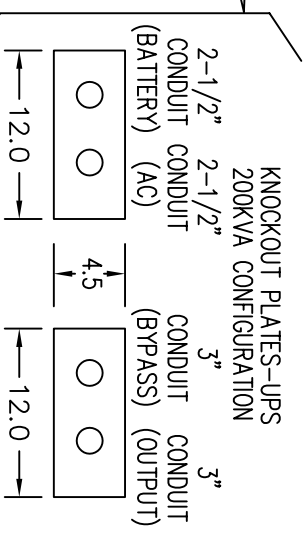


(VIEW FROM TOP OF CABINET)

FRONT



(VIEW FROM BOTTOM OF CABINET)



LTI Power Systems, Inc.

TEL. (440) 327-5050

10800 Middle Ave. Bldg. B Elyria, Ohio 44035

200KVA, 480/480V ASSEMBLY

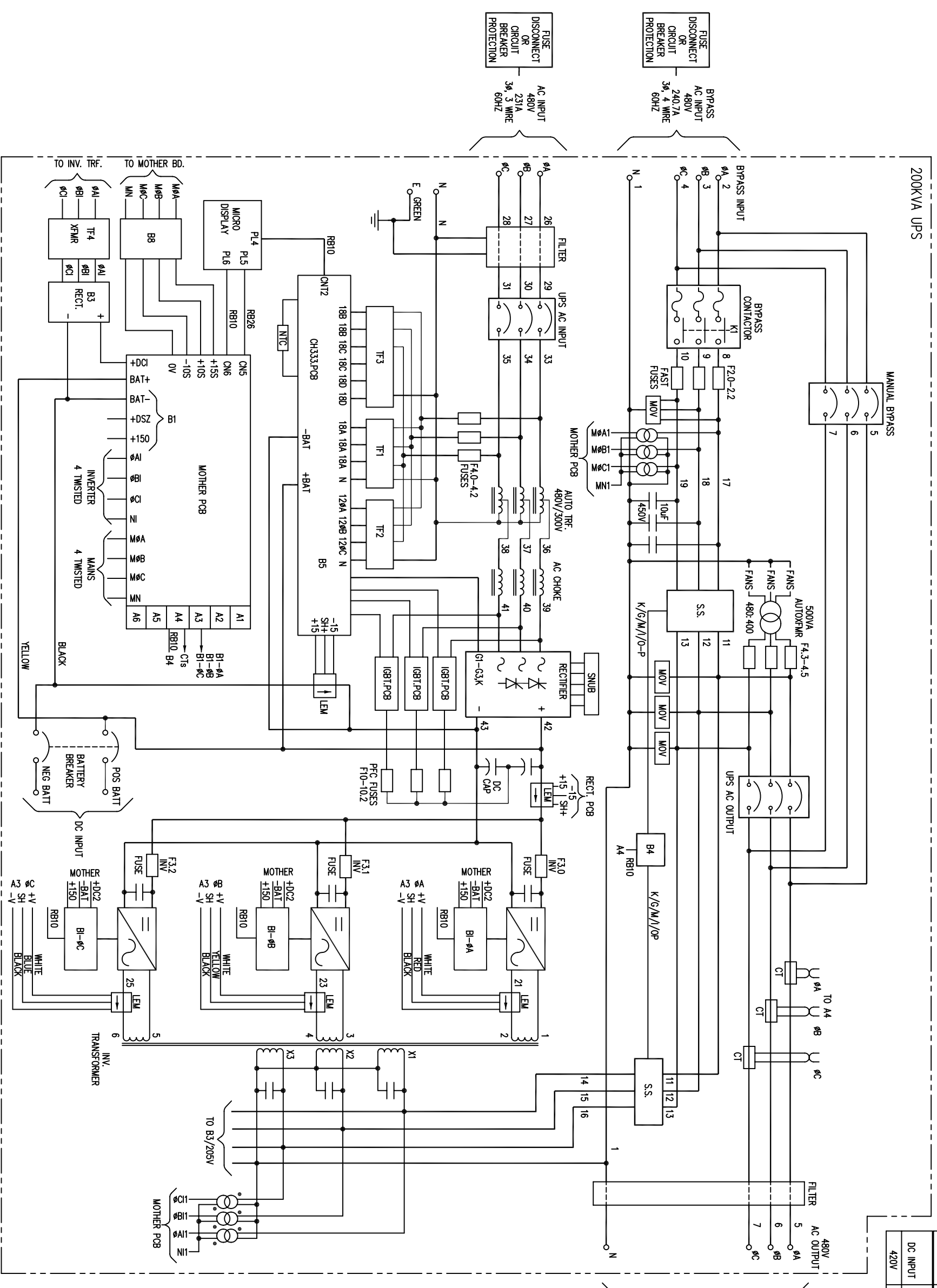
SHEET 1 OF 1

LTI-PROUPS

CAD DWG NAME: 200K33.BASE

REV. 1

- NOTES:
1. WIRE SIZES BASED ON 90°C COPPER CONDUCTORS OPERATING IN 30°C AMBIENT AND NEC TABLES 250-95 AND 310-16. INCREASE CONDUCTOR SIZE FOR LONG RUNS.
  2. CLOCKWISE PHASE ROTATION MUST BE OBSERVED FOR 3 PHASE BYPASS AND AC INPUTS.



AC INPUT	MAX. INPUT CURRENT	CT. BRKR. RATING	A.I.C. RATING	TERM. CAPACITY	TORQUE	RECOM. SIZE	RECOM. FUSING	RECOM. GND. SIZE
480V	231A	280A	35,000	4 AWG - 500MCM	275 IN/LBS	350 MCM	350A	2 AWG
BYPASS INPUT	MAX. CURRENT	CT. BRKR. RATING	A.I.C. RATING	TERM. CAPACITY	TORQUE	RECOM. SIZE	RECOM. FUSING	RECOM. GND. SIZE
480V	240.7A	320A	35,000	4 AWG - 500MCM	275 IN/LBS	500 MCM	400A	1/0 AWG
AC OUTPUT	MAX. CURRENT	CT. BRKR. RATING	A.I.C. RATING	TERM. CAPACITY	TORQUE	RECOM. SIZE	RECOM. FUSING	RECOM. GND. SIZE
480V	240.7A	320A	35,000	(2) 6 - (2) 4/0 GA	275 IN/LBS	(2) 3/0 AWG	400A	1/0 AWG
DC INPUT	MAX. CURRENT	CT. BRKR. RATING	A.I.C. RATING	TERM. CAPACITY	TORQUE	RECOM. SIZE	RECOM. FUSING	RECOM. GND. SIZE
420V	457A	480A	35,000	(2) 4 TO (2) 500MCM	275 IN/LBS	(2) 300 MCM	600A	2/0 AWG

FUSE DISCONNECT OR CIRCUIT BREAKER PROTECTION  
 277/480V  
 3Ø, 4 WIRE  
 60HZ OUTPUT  
 240.7A  
 200KVA @ 0.8pf

FUSE DISCONNECT OR CIRCUIT BREAKER PROTECTION  
 AC INPUT  
 480V  
 231A  
 3Ø, 3 WIRE  
 60HZ

FUSE DISCONNECT OR CIRCUIT BREAKER PROTECTION  
 BYPASS AC INPUT  
 480V  
 240.7A  
 3Ø, 4 WIRE  
 60HZ