

Notes: Unless otherwise specified, dimensions are in inches. Dimensions within brackets [] are in millimeters.
 Recommended clearance for serviceability is 36" [914] in the front and 6" [152] on the remaining sides.

LTI Power Systems, Inc.

TEL. (440) 327-5050

10800 Middle Ave. Elyria, Ohio 44035

ProUPS B800 ENCLOSURE
20KVA

20KVA WEIGHT W/SKID: 1250 LBS. (563 kg)

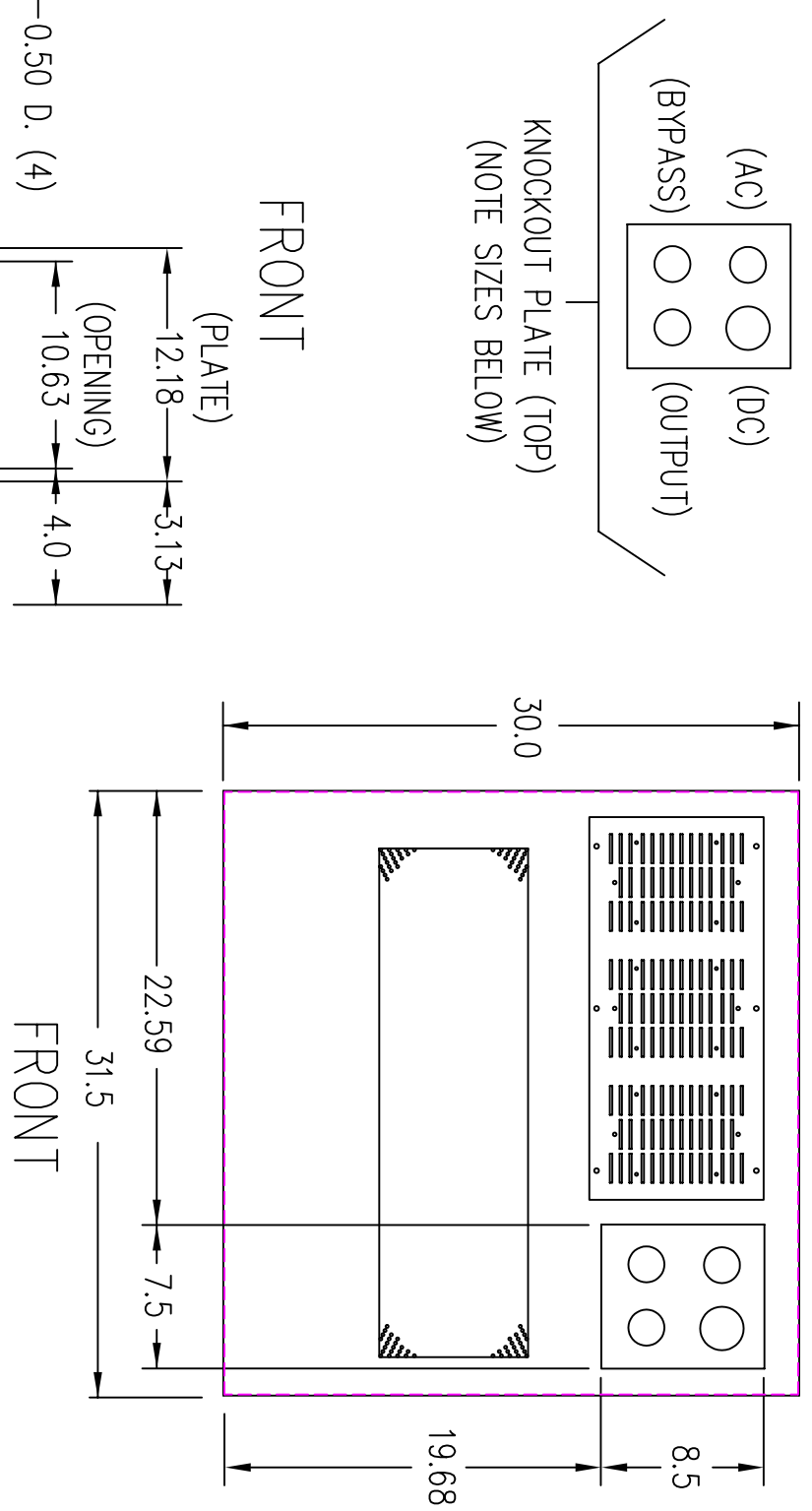
LTI - ProUPS

CAD DWG NAME: B800CAB_20KVA

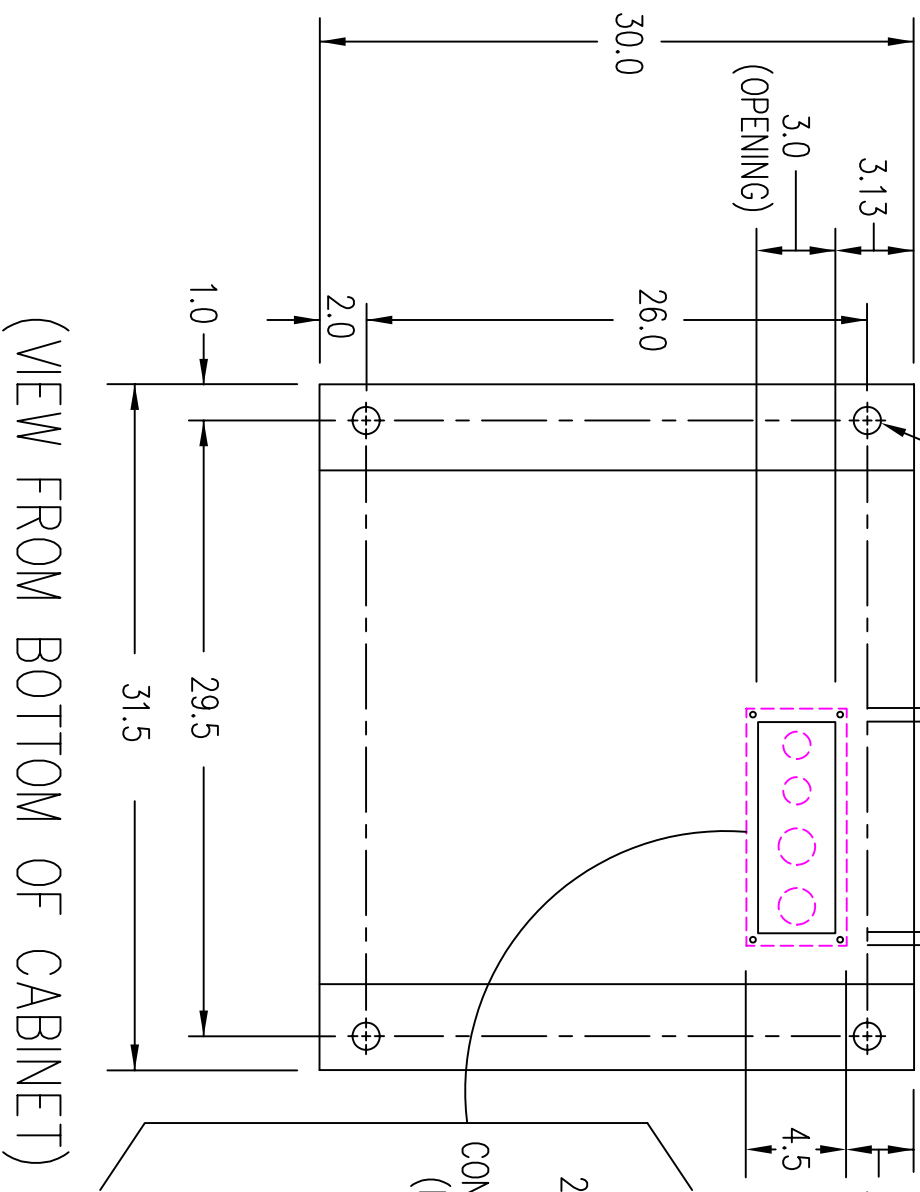
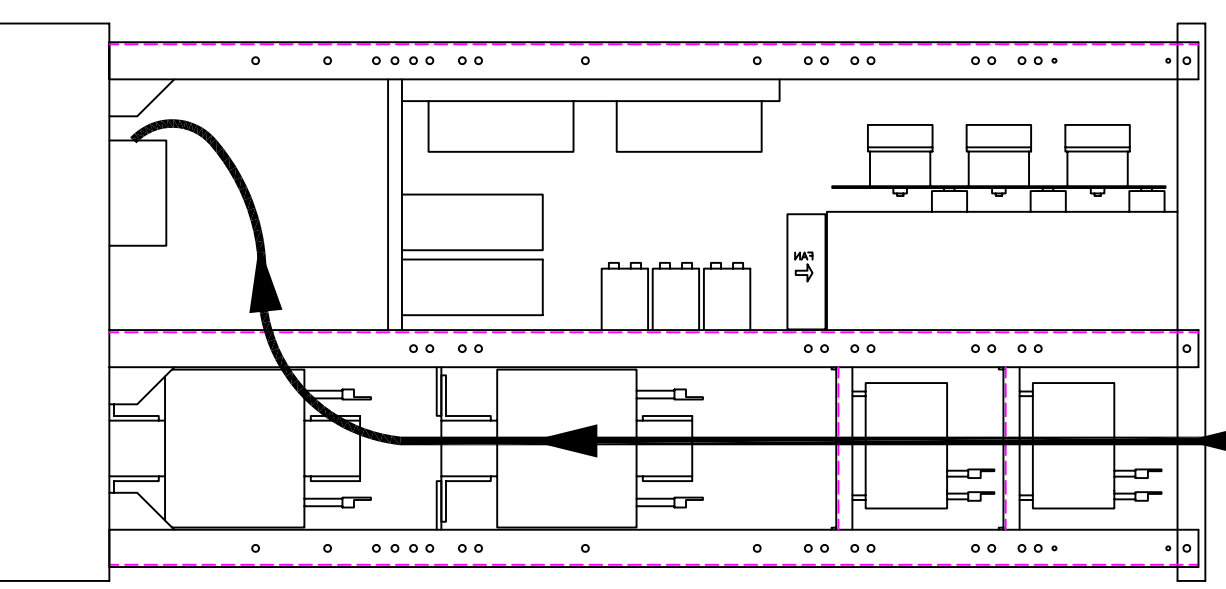
REV.

1

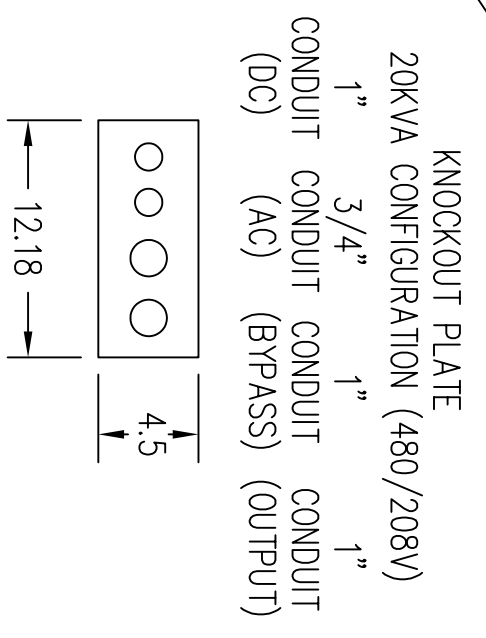
(VIEW FROM TOP OF CABINET)



RIGHT SIDE



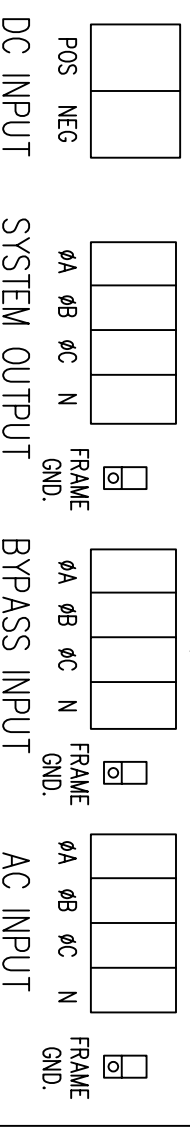
(VIEW FROM BOTTOM OF CABINET)



FOR TOP CABLE ENTRY, ROUTE WIRES DOWN RIGHT SIDE THROUGH OPEN AREA OF UPRIGHT CENTER PANEL TO TERMINALS LOCATED ON BASE PANEL.

TERMINATION CONFIGURATION (BOTTOM, FRONT)

TERMINAL BLOCK CAPACITY: 2/0 TO 14 GA.
FRAME GROUND CAPACITY: 1/0 TO 14 GA.



NOTE: ALL DIMENSIONS ARE IN INCHES UNLESS OTHERWISE SPECIFIED.

