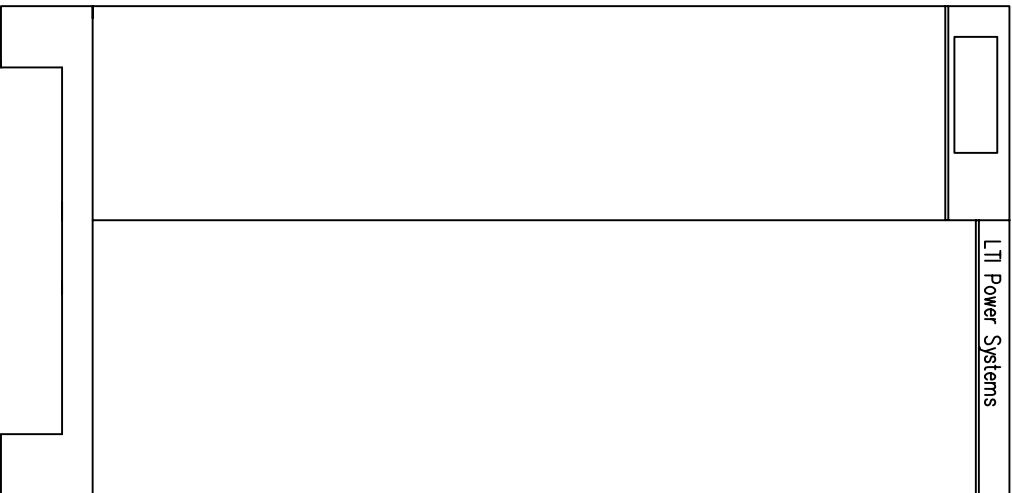
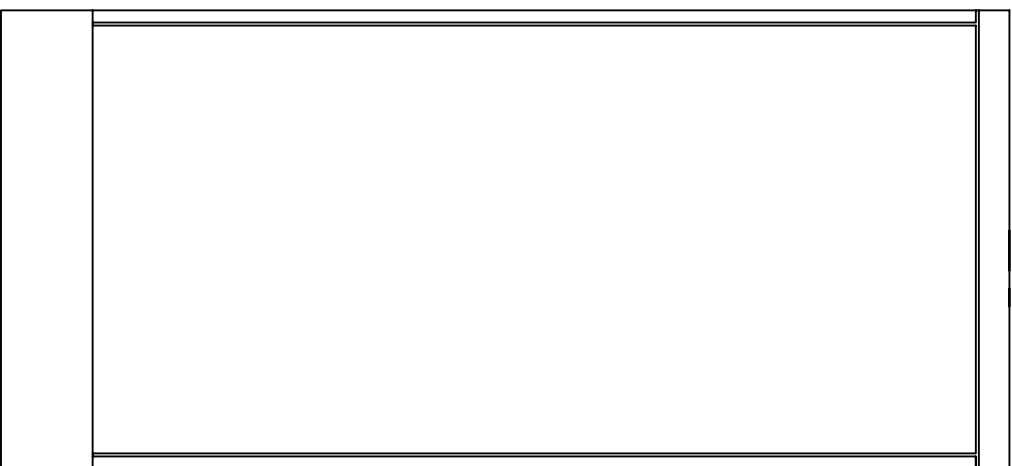


LEFT



FRONT



RIGHT

[800]

31.5

[350]

13.75

[450]

17.75

[762]

30.0

65.0
[1650]

Notes: Unless otherwise specified, dimensions are in inches. Dimensions within brackets [] are in millimeters.
 Recommended clearance for serviceability is 36" [914] on the left side, 18" [457.2] on the right side and 18" [457.2] at the back of the system.

LTI Power Systems, Inc.

TEL. (440) 327-5050

10800 Middle Ave. Elyria, Ohio 44035

PROUPS B800 ENCLOSURE
20KVVA INVERTER

20KVVA WEIGHT: 1100 LBS. (500 kg)

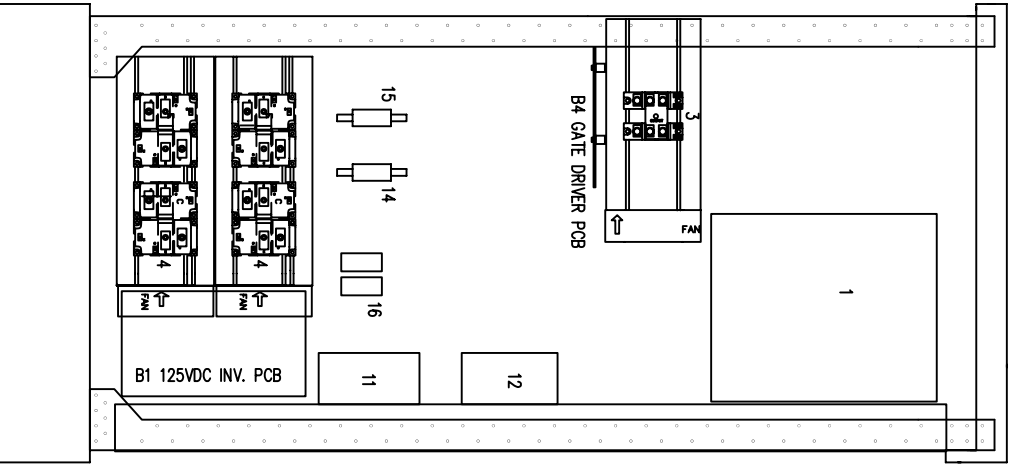
LTI - PROUPS

CAD DWG NAME: RK333-20KINV

REV.

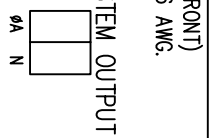
1

- 1 - ELECTRONICS RACK
- 2 - INVERTER TRANSFORMER
- 3 - STAT. SWITCH POWER PACK
- 4 - INVERTER POWER PACK
- 5 - S1.0 PRE-CHARGE SWITCH
- 6 - REL FILTERS
- 7 - INPUT/OUTPUT TERMINALS
- 8 - RELAY INTERFACE TERMINALS
- 9 - BATTERY INPUT TERMINALS
- 10 - BATTERY CIRCUIT BREAKER
- 11 - CONTACTOR
- 12 - MANUAL BYPASS BREAKER
- 13 - AC OUTPUT BREAKER
- 14 - BYPASS FUSE (F2.0)
- 15 - INVERTER FUSE (F3.0)
- 16 - PRE-CHARGE FUSES (F8.0-8.1)

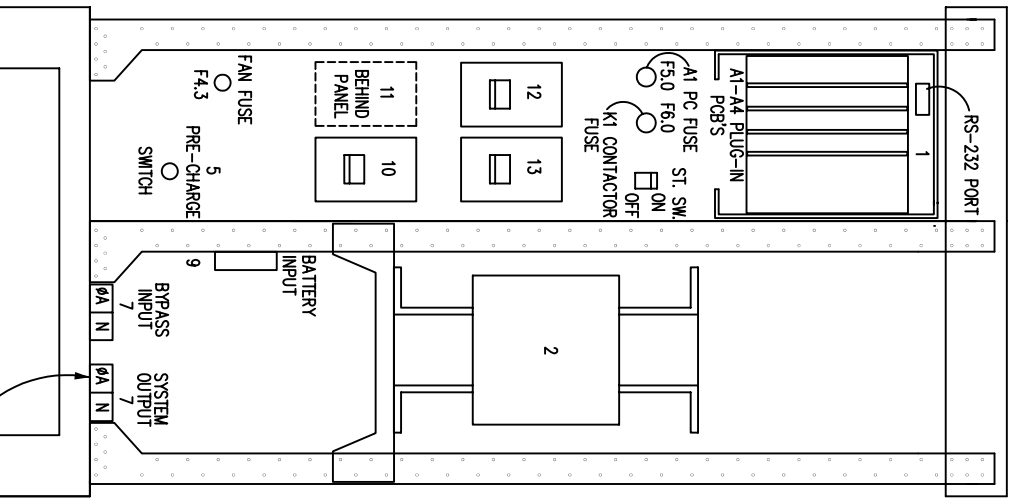
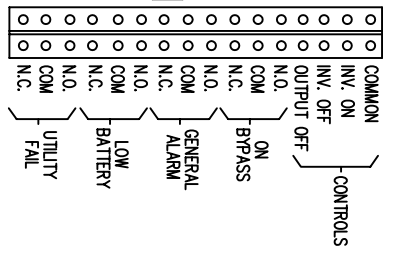


LEFT

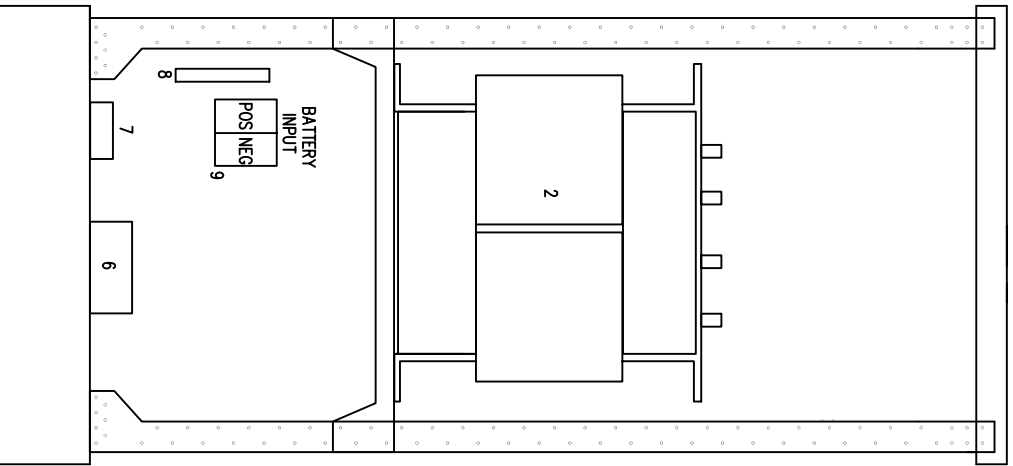
TERMINATION CONFIGURATION (BOTTOM, FRONT)
 TERMINAL BLOCK CAPACITY : 350 MCM TO 6 AWG.
 TORQUE: 275 IN. LBS.



RELAY INTERFACE TERMINATIONS
 TERMINAL CAPACITY: 14 TO 20 AWG.
 RELAYS RATED 1A @ 24VDC, 0.5A @ 120VAC RESISTIVE



FRONT



RIGHT

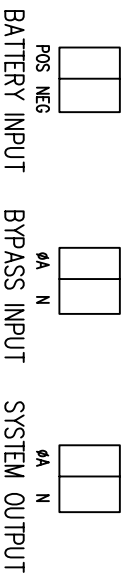
LTI Power Systems, Inc.

MK333 20KVA, 125VDC INVERTER ASSEMBLY

LTI-PROUPS

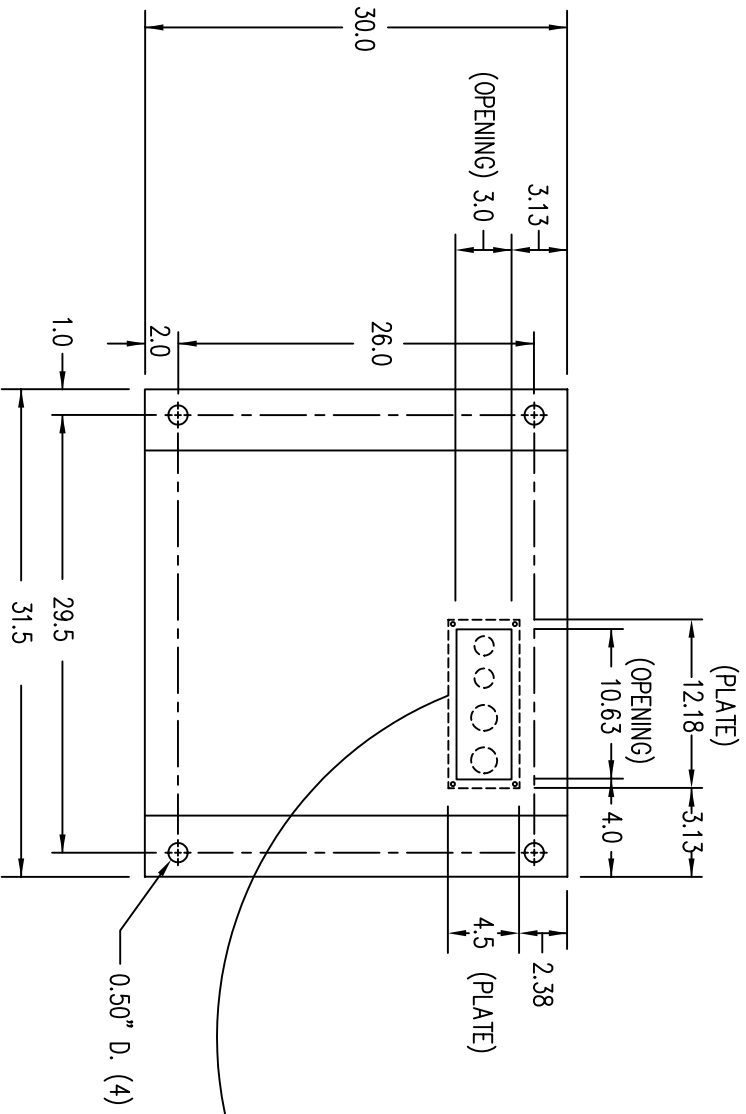
REV. 2

TERMINATION CONFIGURATION (BOTTOM, FRONT)
 TERMINAL BLOCK CAPACITY: 350MCM TO 6 GA.
 TERMINAL TORQUE: 275 IN/LBS.

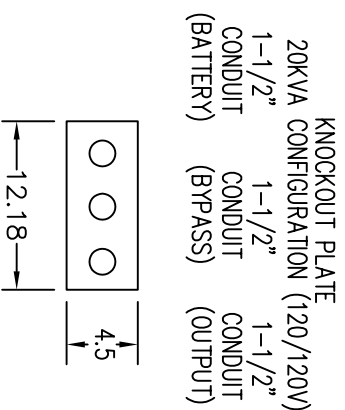


NOTE: ALL DIMENSIONS ARE IN INCHES UNLESS OTHERWISE SPECIFIED.

FRONT

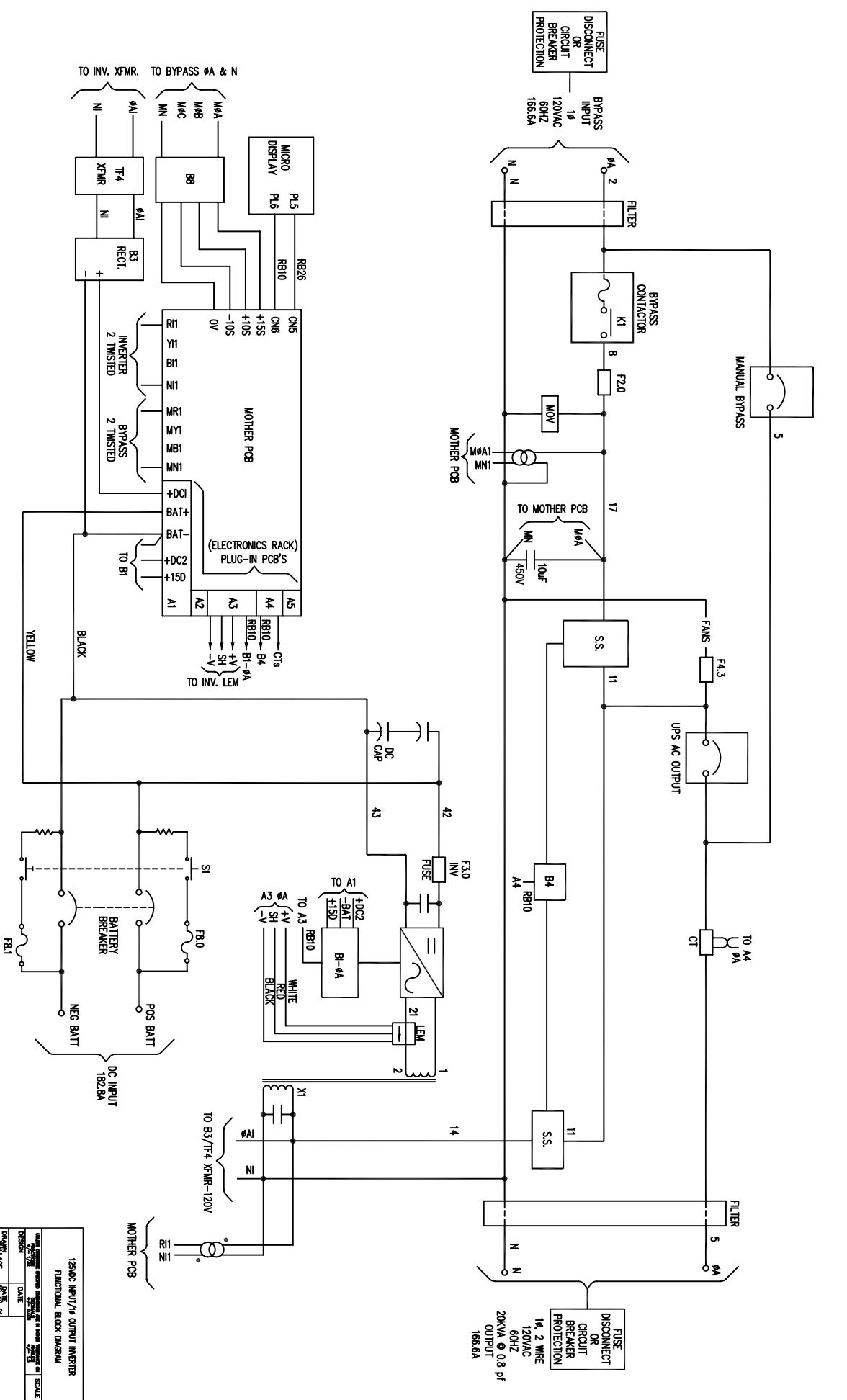


(VIEW FROM BOTTOM OF CABINET)



NOTES:
 1. WIRE SIZES BASED ON 90°C COPPER CONDUCTORS OPERATING IN 30°C AMBIENT
 AND NEC TABLES 250-95 AND 310-16. INCREASE CONDUCTOR SIZE FOR LONG RUNS.

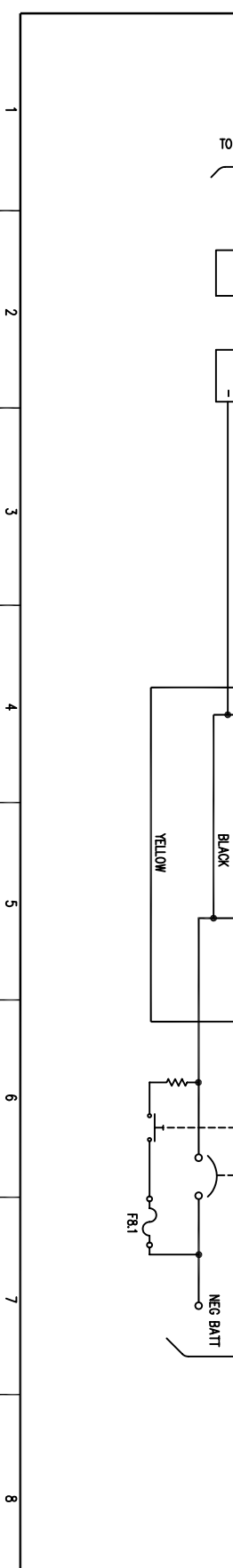
DC INPUT	DC INPUT	MAX. BRK. RATING	CRT. RATING	A.I.C. RATING	TERM. CAPACITY	TORQUE	RECM. SIZE	RECM. FUSING	RECM. GND. SIZE	RECM. CONDUIT
125V	182.8A	200A	25,000	350 MCM -6 AWG	275 N/LBS	4/0 AWG	2 AWG	1-1/2"		
120V	166.6A	200A	25,000	350 MCM -6 AWG	275 N/LBS	4/0 AWG	2 AWG	1-1/2"		
120V	166.6A	200A	25,000	350 MCM -6 AWG	275 N/LBS	4/0 AWG	2 AWG	1-1/2"		



120VAC INPUT/OUTPUT INVERTER
 FUNCTIONAL BLOCK DIAGRAM

DESIGN	DATE
REVISED	DATE
BY	DATE
CHECKED	DATE
APPROVED	DATE

ISSUE 2



1 2 3 4 5 6 7 8 9