

NOTES:

1. UNLESS OTHERWISE SPECIFIED, ALL DIMENSIONS ARE IN INCHES. DIMENSIONS WITHIN BRACKETS [ ] ARE IN MILLIMETERS.
2. RECOMMENDED CLEARANCE FOR AIR FLOW AND SERVICEABILITY : LEFT SIDE 30" [762] , RIGHT SIDE 18" [457.2] AND BACK OF SYSTEM 18" [457.2].

**LTI Power Systems, Inc.**

TEL. (440) 327-5050

10800 MIDDLE AVE. BLDG. B ELYRIA, OHIO

PROUPS B1250 ENCLOSURE

20KVA, 125VDC

WEIGHT: 1,600 LBS. (726.4 kg)

LTI - PROUPS

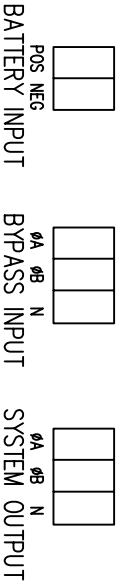
SHEET 1 OF 1

CAD DWG NAME: B1250CAB\_20\_125VDC

REV.

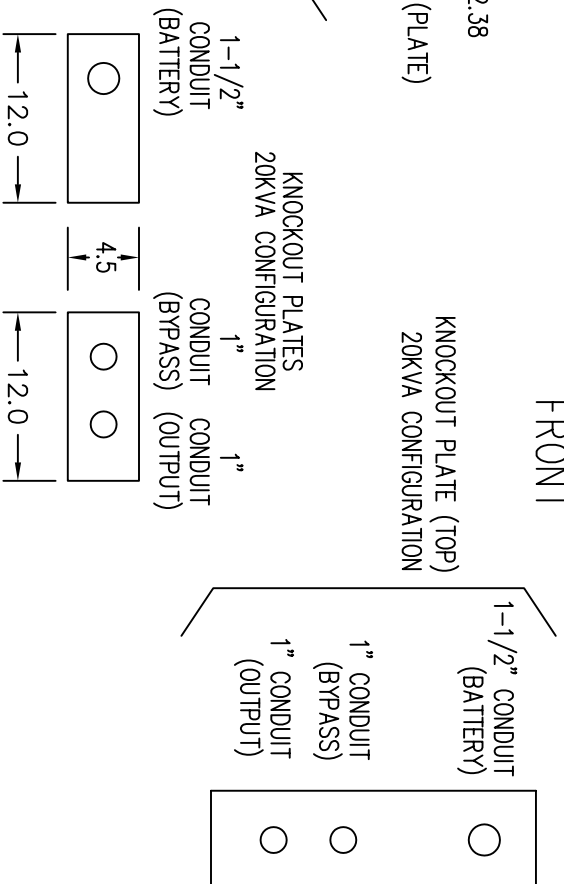
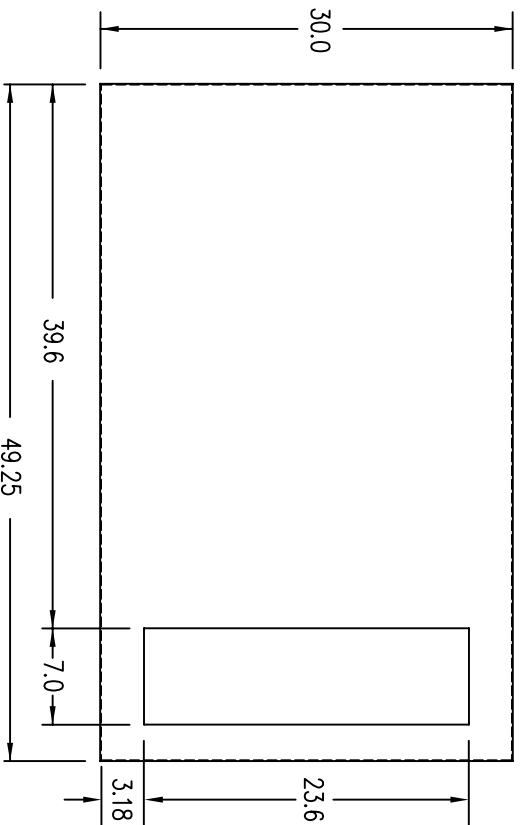
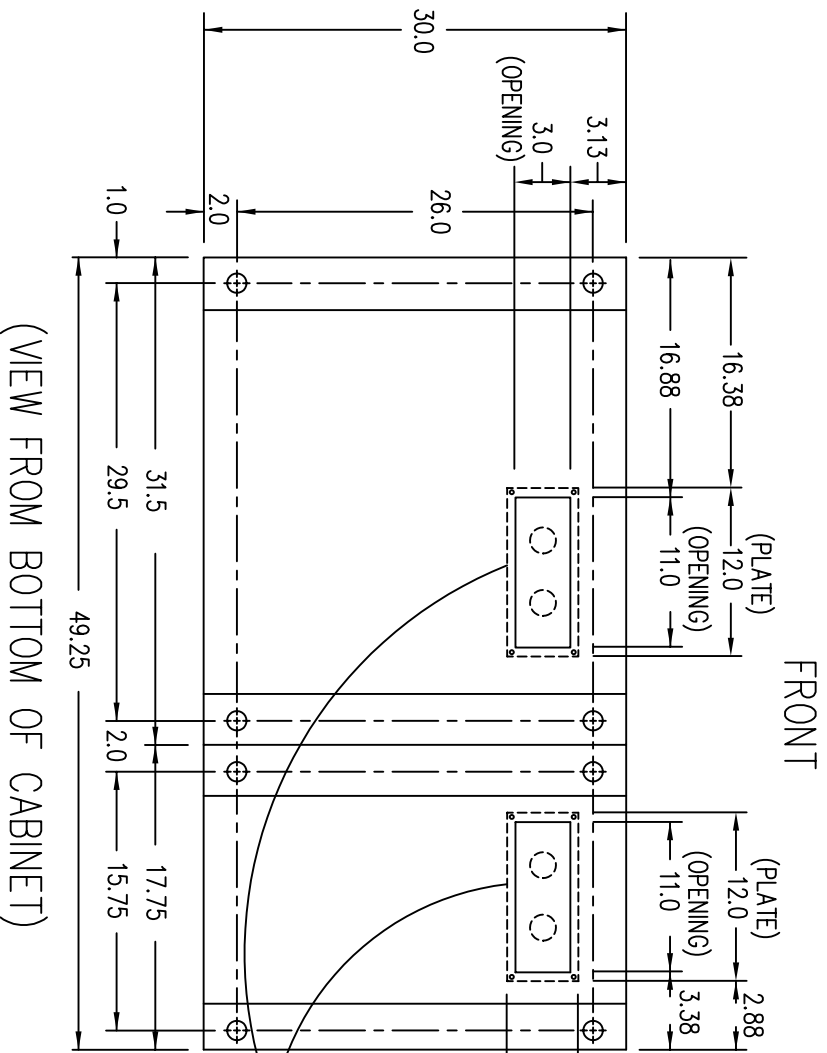


TERMINATION CONFIGURATION (BOTTOM, FRONT)  
 TERMINAL BLOCK CAPACITY (BYPASS/OUTPUT) : 14 TO 2/0 AWG  
 TERMINAL BLOCK CAPACITY (BATTERY) : 350 MCM TO 6 AWG



NOTE: ALL DIMENSIONS ARE IN INCHES UNLESS OTHERWISE SPECIFIED.

WHEN USING TOP CABLE ENTRY, ROUTE WIRES DOWN ALONG RIGHT SIDE OF CABINET TO BOTTOM, FRONT TERMINAL BLOCK LOCATION.



**LTI Power Systems, Inc.**

TEL. (440) 327-5050

10800 Middle Ave. Bldg. B Elyria, Ohio 44035

20KVA , 125VDC INVERTER ASSEMBLY

SHEET 1 OF 1

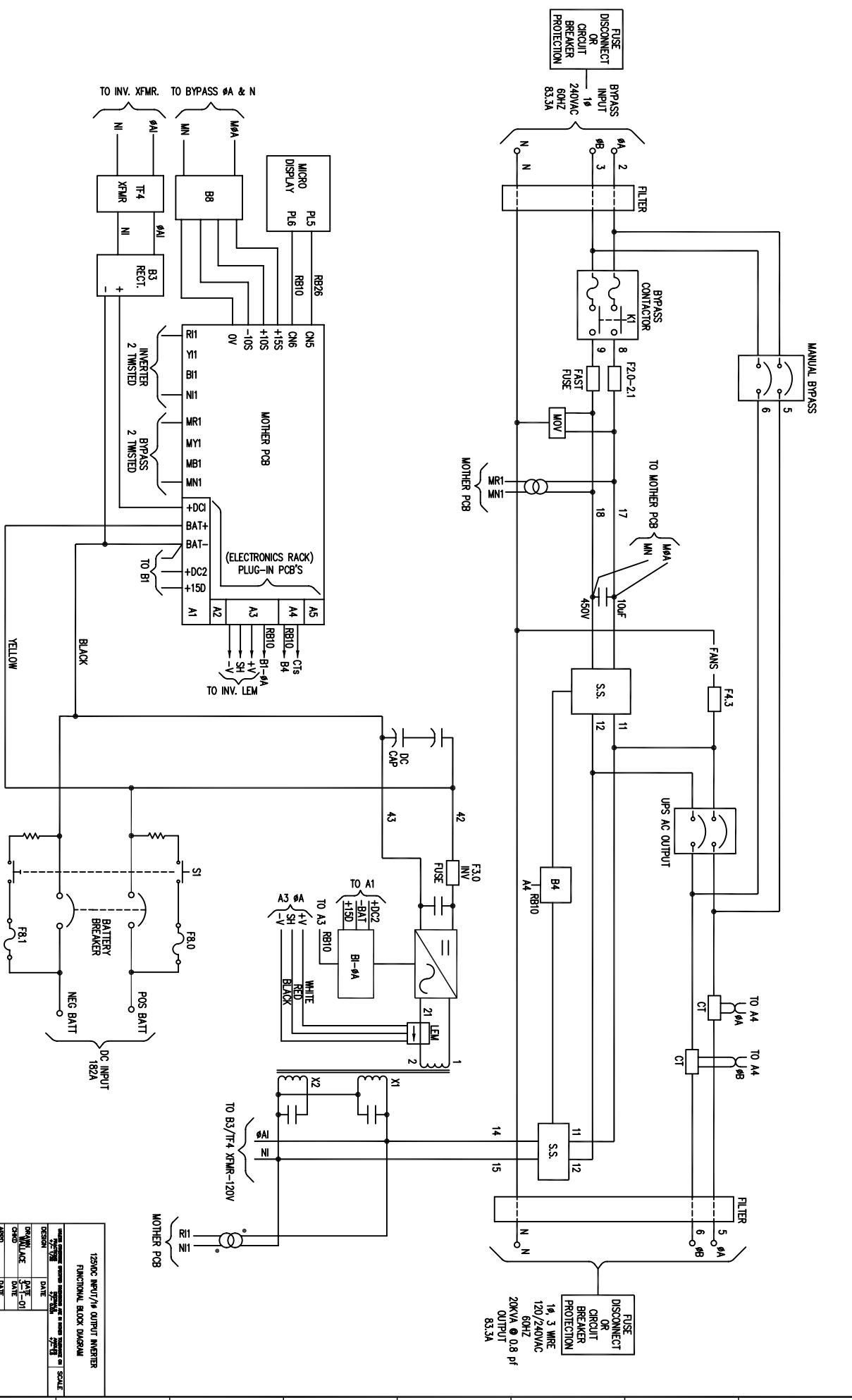
**LTI-PROUPS**

CAD DWG NAME: 20KINV\_125BASE

REV. 1

- NOTES:
1. WIRE SIZES BASED ON 90°C COPPER CONDUCTORS OPERATING IN 30°C AMBIENT AND NEC TABLES 250-95 AND 310-16. INCREASE CONDUCTOR SIZE FOR LONG RUNS.
  2. CLOCKWISE PHASE ROTATION MUST BE OBSERVED FOR BYPASS INPUT.

BYPASS AC INPUT	MAX. BYPASS CURRENT	PCT. BRKR. RATING	A.I.C. RATING	TERM. CAPACITY	TORQUE	RECM. SIZE	RECM. FUSING	RECM. CONDUIT
240V	83.3A	100A	25,000	14-2/0 AWG	75 IN./LBS	2 AWG	125A	8 AWG 1"*
AC OUTPUT	MAX. BRKR. RATING	A.I.C. RATING	TERM. CAPACITY	TORQUE	RECM. SIZE	RECM. FUSING	RECM. CONDUIT	
120/240V	83.3A	100A	25,000	14-2/0 AWG	75 IN./LBS	2 AWG	125A	8 AWG 1"*
DC INPUT	MAX. BRKR. RATING	A.I.C. RATING	TERM. CAPACITY	TORQUE	RECM. SIZE	RECM. FUSING	RECM. CONDUIT	
125V	182A	200A	25,000	350CM <sup>2</sup> - 6 AWG	75 IN./LBS	3/0 AWG	225A	4 AWG 1-1/2"



12500C INVERTER OUTPUT INVERTER  
FUNCTIONAL BLOCK DIAGRAM

DATE: 2/27/83  
SCALE: 1"=1'

DESIGNER: J. J. GIBSON  
DRAWN BY: J. J. GIBSON  
CHECKED BY: J. J. GIBSON  
DATE: 2/27/83

REVISED BY: J. J. GIBSON  
DATE: 2/27/83

ISSUE: 1

15K3.201224L.12500C  
SHEET 1 OF 1

FOR THE GENERAL ELECTRIC COMPANY  
ELIZABETH, N.J. 07208