

Notes: Unless otherwise specified, dimensions are in inches. Dimensions within brackets [ ] are in millimeters.  
 Recommended clearance for serviceability is 36" [914] on the left side, 18" [457.2] on the right side and 18" [457.2] at the back of the system.

**LTI Power Systems, Inc.**  
 TEL. (440) 327-5050  
 10800 Middle Ave. Elyria, Ohio 44035

ProUPS B800 ENCLOSURE  
 10-40KVA  
 10KVA WEIGHT: 860 LBS. (390 kg)  
 15KVA WEIGHT: 950 LBS. (431 kg)  
 20KVA WEIGHT: 1058 LBS. (480 kg)  
 30KVA WEIGHT: 1150 LBS. (522 kg)  
 40KVA WEIGHT: 1220 LBS. (554 kg)

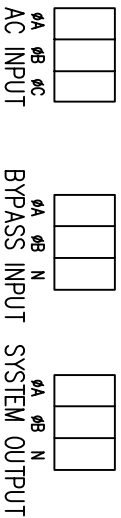
LTI - ProUPS  
 CAD DWG NAME: RK333-A2

REV.  
 2

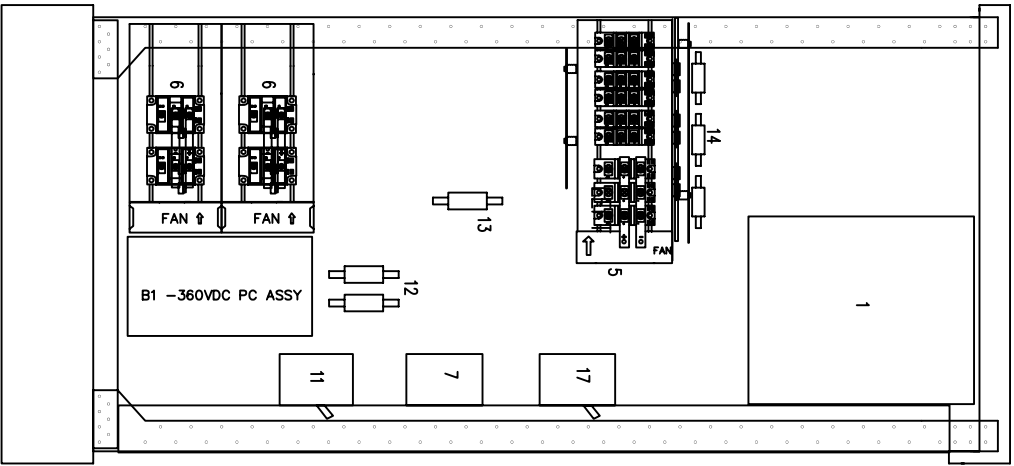
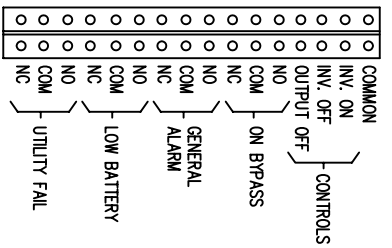
- 1 - ELECTRONICS RACK
- 2 - INVERTER TRANSFORMER
- 3 - AC CHOKE
- 4 - INPUT AUTOTRANSFORMER
- 5 - RECT/STAT. SWITCH POWER PACKS
- 6 - INVERTER POWER PACK
- 7 - CONTACTOR
- 8 - RFI FILTERS
- 9 - TERMINALS

- 10 - BATTERY TERMINALS
- 11 - BATTERY BREAKER
- 12 - INVERTER FUSES
- 13 - BYPASS FUSE
- 14 - pF CORRECTION FUSES
- 15 - RELAY INTERFACE TERMINALS
- 16 - AC INPUT BREAKER
- 17 - MANUAL BYPASS BREAKER
- 18 - AC OUTPUT BREAKER

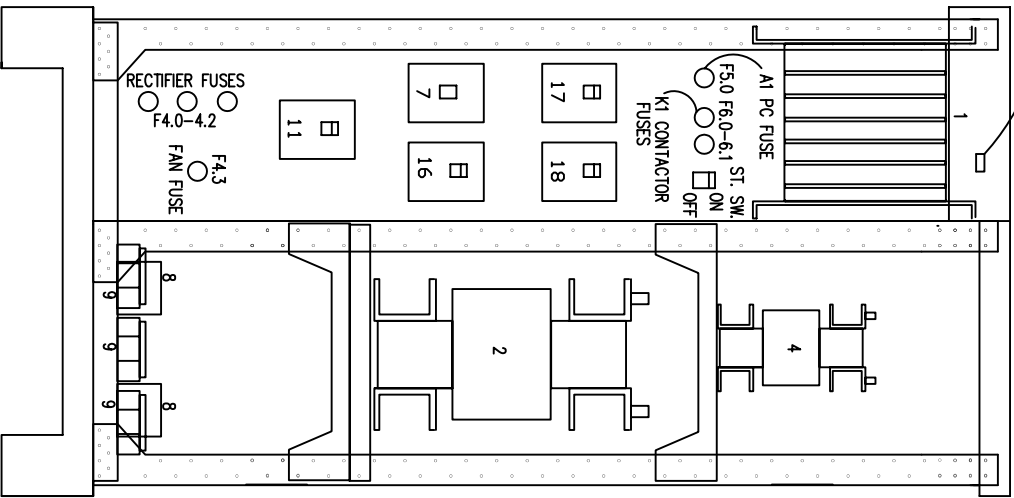
TERMINATION CONFIGURATION (BOTTOM, FRONT)  
 TERMINAL BLOCK CAPACITY: 2/0 TO 14 GA.



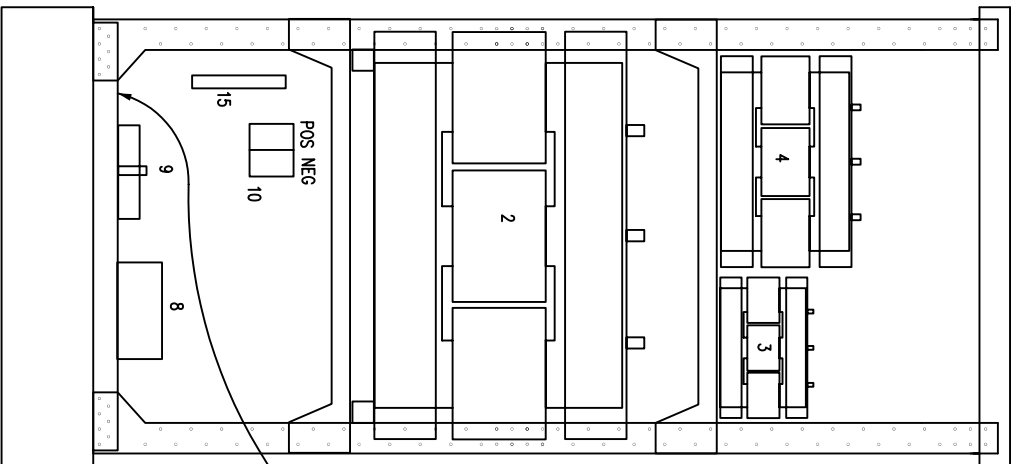
RELAY INTERFACE TERMINATIONS  
 TERMINAL CAPACITY: 14 TO 20 AWG.  
 RELAYS RATED 1A @ 24VDC, 0.5A @ 120VAC RESISTIVE



LEFT

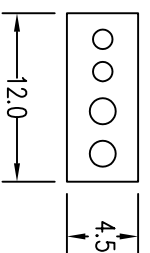


FRONT

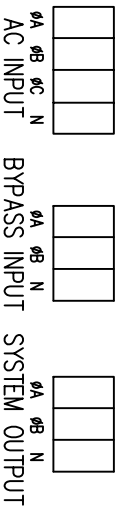


RIGHT

25KVA CONFIGURATION  
 1" CONDUIT  
 3/4" CONDUIT  
 1-1/4" CONDUIT  
 1-1/4" CONDUIT  
 (BATTERY) (AC) (BYPASS) (OUTPUT)

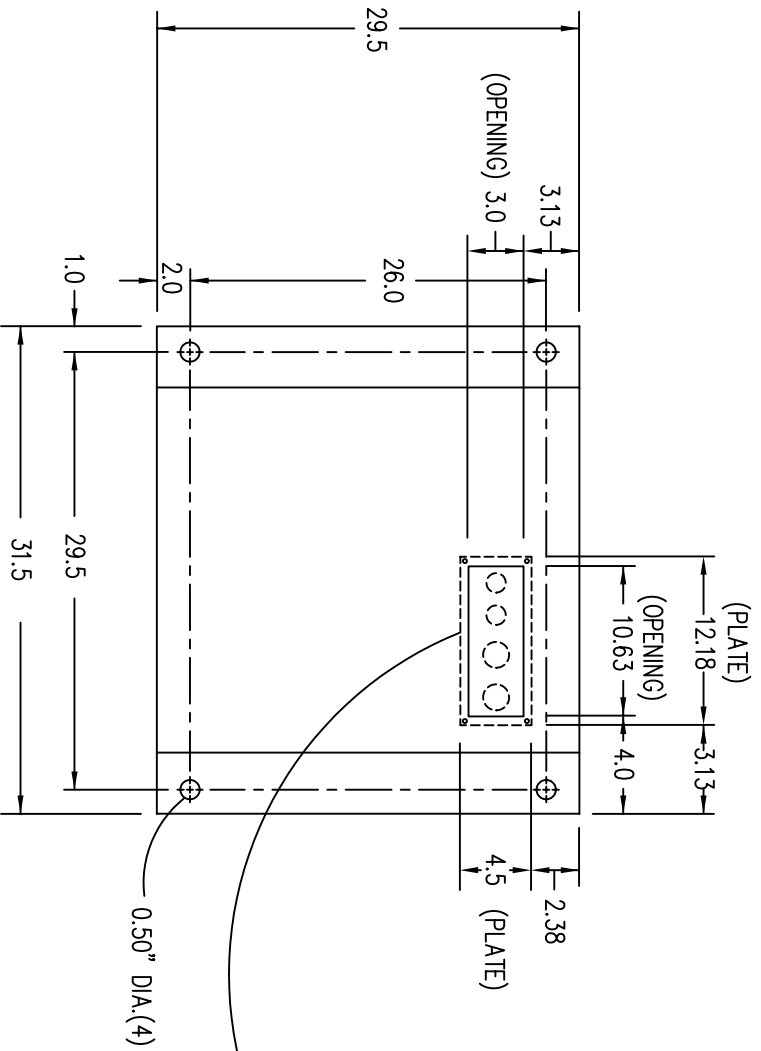


TERMINATION CONFIGURATION (BOTTOM, FRONT)  
 TERMINAL BLOCK CAPACITY: 2/0 TO 14 GA.

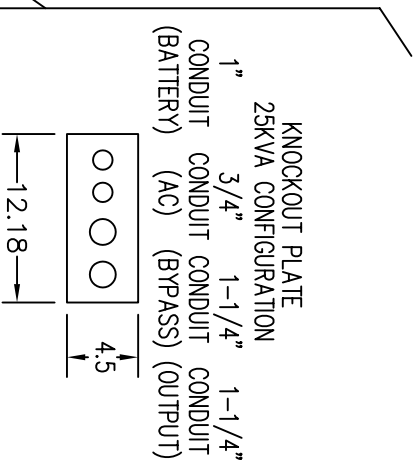


NOTE: ALL DIMENSIONS ARE IN INCHES UNLESS OTHERWISE SPECIFIED.

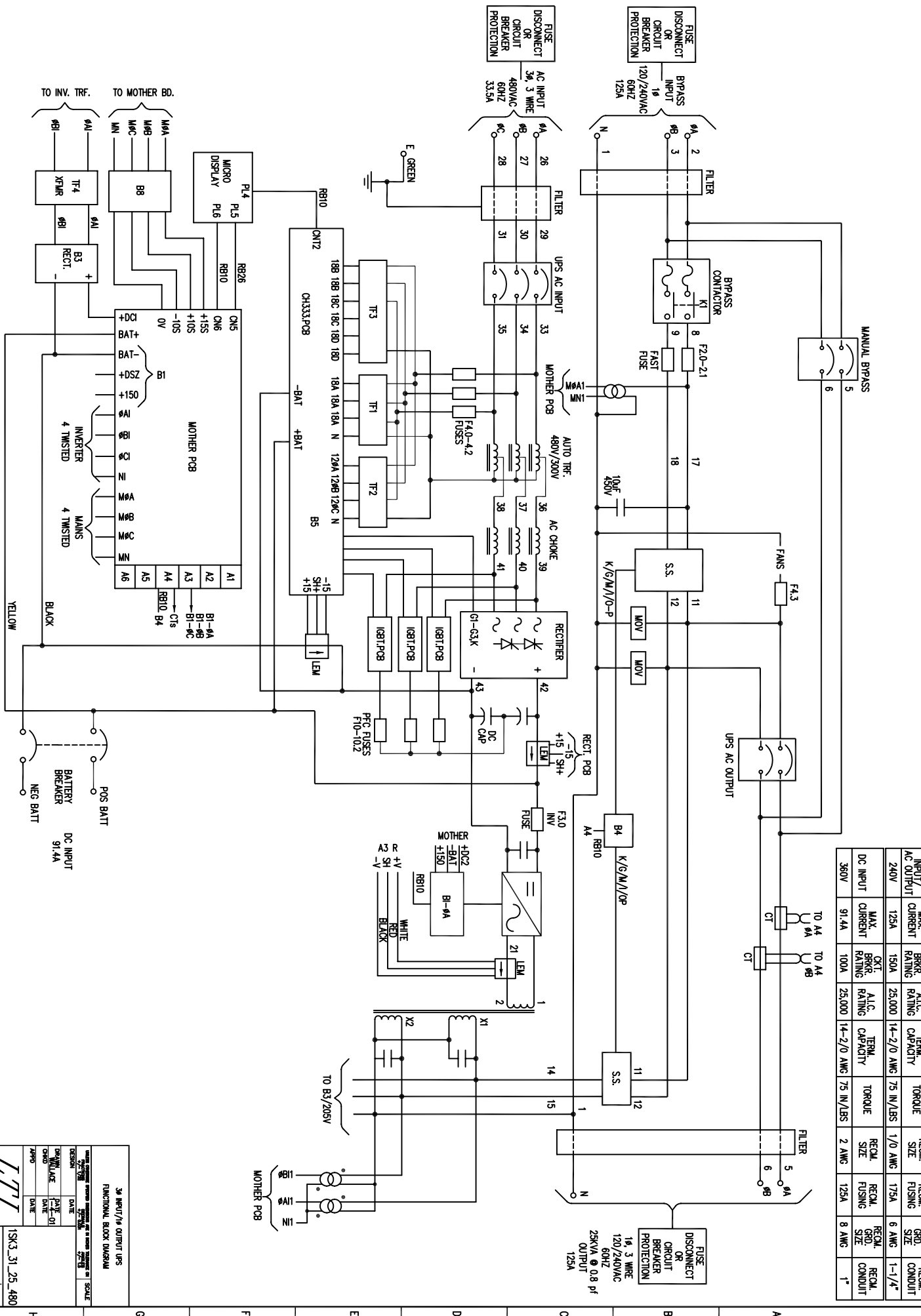
FRONT



(VIEW FROM BOTTOM OF CABINET)



NOTES:  
 1. WIRE SIZES BASED ON 90°C COPPER CONDUCTORS OPERATING IN 30°C AMBIENT AND NEC TABLES 250-95 AND 310-16. INCREASE CONDUCTOR SIZE FOR LONG RUNS.  
 2. CLOCKWISE PHASE ROTATION MUST BE OBSERVED FOR BYPASS AND AC INPUTS.



AC INPUT	MAX. INPUT CURRENT	CKT. BRKR. RATING	A.I.C. RATING	TERM. CAPACITY	TORQUE	RECOM. SIZE	RECOM. FUSING	RECOM. GND. SIZE	RECOM. CONDUIT
480V	33.5A	40A	25,000	14-2/0 AWG	75 IN/LBS	8 AWG	50A	8 AWG	3/4"
BYPASS INPUT/AC OUTPUT	125A	150A	25,000	14-2/0 AWG	75 IN/LBS	8 AWG	175A	6 AWG	1-1/4"
240V	125A	150A	25,000	14-2/0 AWG	75 IN/LBS	8 AWG	175A	6 AWG	1-1/4"
DC INPUT	91.4A	100A	25,000	14-2/0 AWG	75 IN/LBS	2 AWG	125A	8 AWG	1"

3Φ INPUT/1Φ OUTPUT UPS  
 FUNCTIONAL BLOCK DIAGRAM

DATE: 2/27/98  
 DRAWN BY: J. J. J. / J. J. J.  
 CHECKED BY: J. J. J. / J. J. J.  
 DATE: 2/27/98

POWER SYSTEMS, INC.  
 EVANSTON, ILLINOIS 60020-2214

ISSUE: 1SK3\_31\_25\_480  
 SHEET 1 OF 1

1 2 3 4 5 6 7 8 9