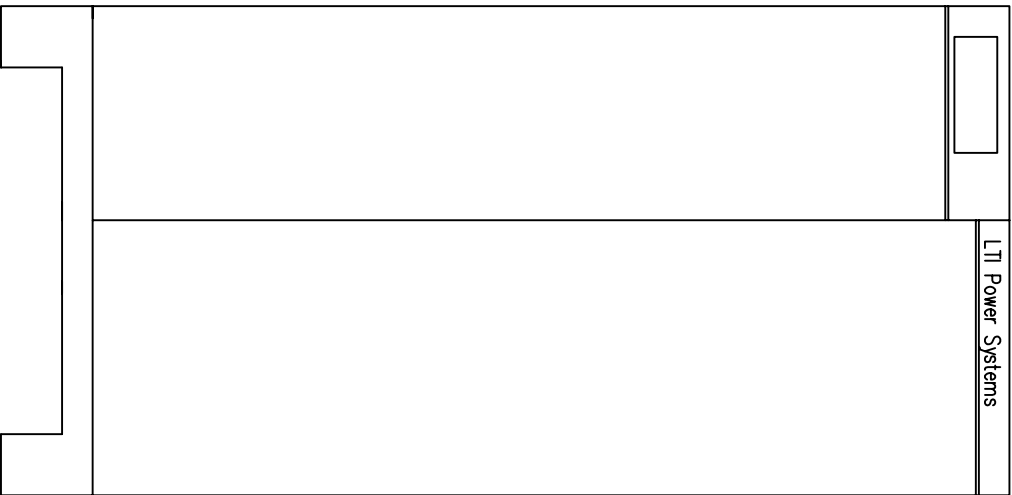


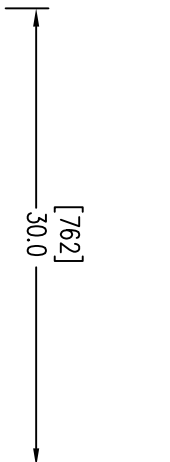
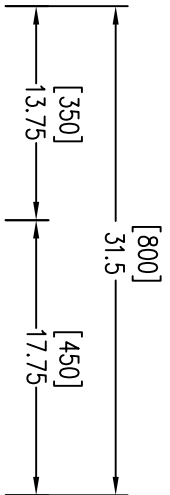
LEFT



FRONT



RIGHT



Notes: Unless otherwise specified, dimensions are in inches. Dimensions within brackets [ ] are in millimeters.  
 Recommended clearance for serviceability is 36" [914] on the left side, 18" [457.2] on the right side and 18" [457.2] at the back of the system.

**LTI Power Systems, Inc.**

TEL. (440) 327-5050

10800 Middle Ave. Elyria, Ohio 44035

ProUPS B800 ENCLOSURE  
 10-40KVA

10KVA WEIGHT: 860 LBS. (390 kg)  
 15KVA WEIGHT: 950 LBS. (431 kg)  
 20KVA WEIGHT: 1058 LBS. (480 kg)  
 30KVA WEIGHT: 1150 LBS. (522 kg)  
 40KVA WEIGHT: 1220 LBS. (554 kg)

LTI - ProUPS

CAD DWG NAME: RK333-A2

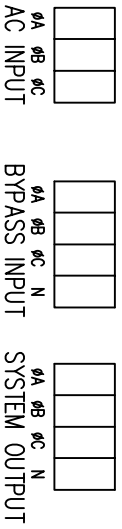
REV.

2

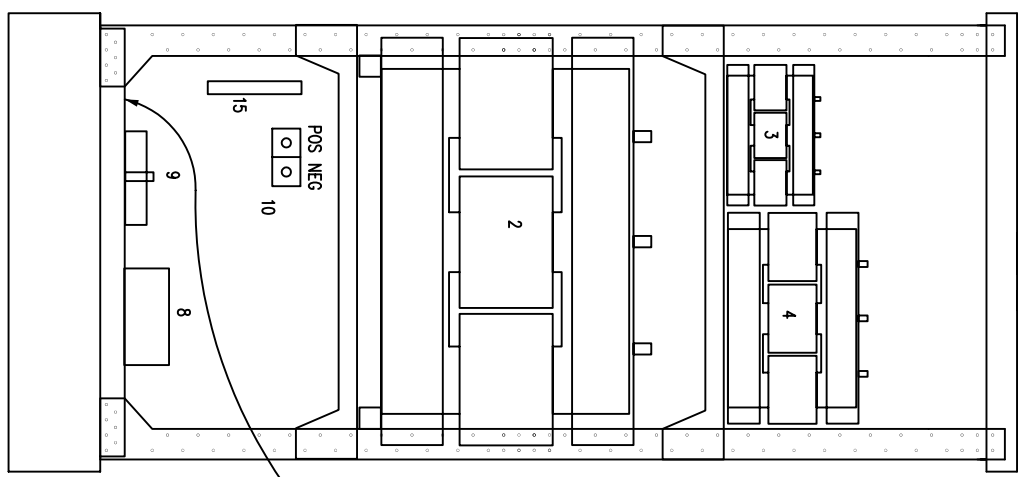
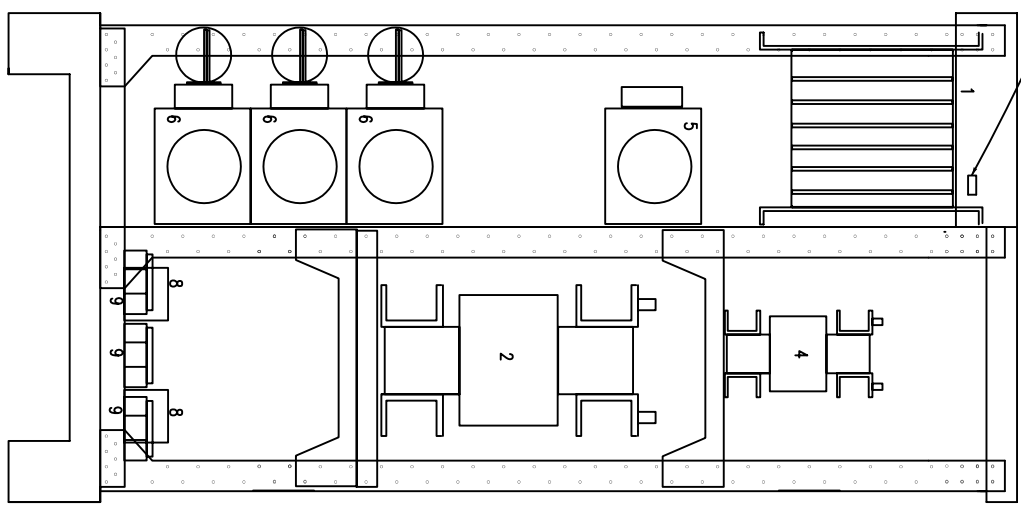
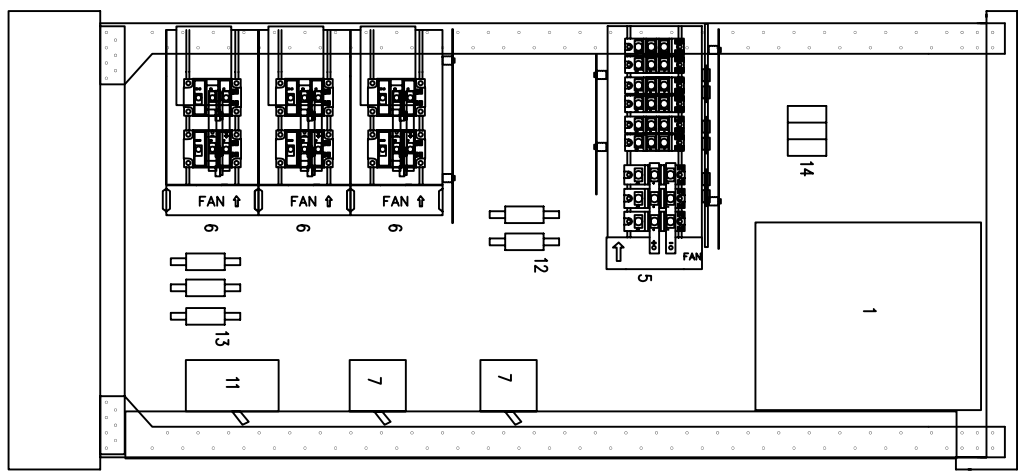
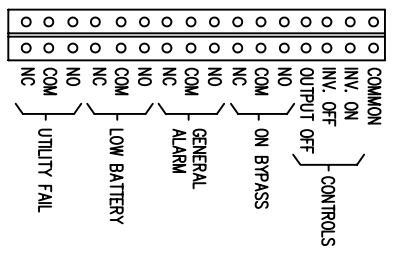
- 1 - ELECTRONICS RACK
- 2 - INVERTER TRF.
- 3 - AC CHOKE
- 4 - AUTOTRMR.
- 5 - RECT/STAT. SWITCH POWER PACKS
- 6 - INVERTER POWER PACK
- 7 - MGBS
- 8 - RFI FILTERS

- 9 - TERMINALS
- 10 - BATTERY TERMINALS
- 11 - BATTERY BREAKER
- 12 - INVERTER FUSES
- 13 - BYPASS FUSES
- 14 - pf CORRECTION FUSES
- 15 - RELAY INTERFACE TERMINALS

TERMINATION CONFIGURATION (BOTTOM, FRONT)  
 TERMINAL BLOCK CAPACITY: 2/0 TO 14 GA.



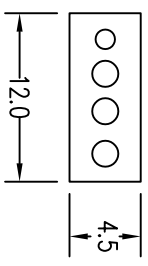
RELAY INTERFACE TERMINATIONS  
 TERMINAL CAPACITY: 14 TO 20 AWG.  
 RELAYS RATED 1A @ 24VDC, 0.5A @ 120VAC RESISTIVE



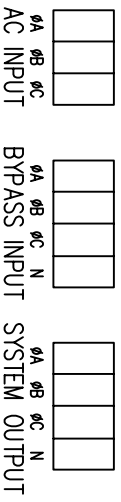
40KVA CONFIGURATION (208/208V)  
 1-1/4" CONDUIT (AC)  
 1-1/2" CONDUIT (BYPASS)  
 2" CONDUIT (OUTPUT)

40KVA CONFIGURATION (480/208V)  
 1-1/4" CONDUIT (AC)  
 3/4" CONDUIT (BYPASS)  
 2" CONDUIT (OUTPUT)

40KVA CONFIGURATION (480/480V)  
 1-1/4" CONDUIT (AC)  
 3/4" CONDUIT (BYPASS)  
 3/4" CONDUIT (OUTPUT)

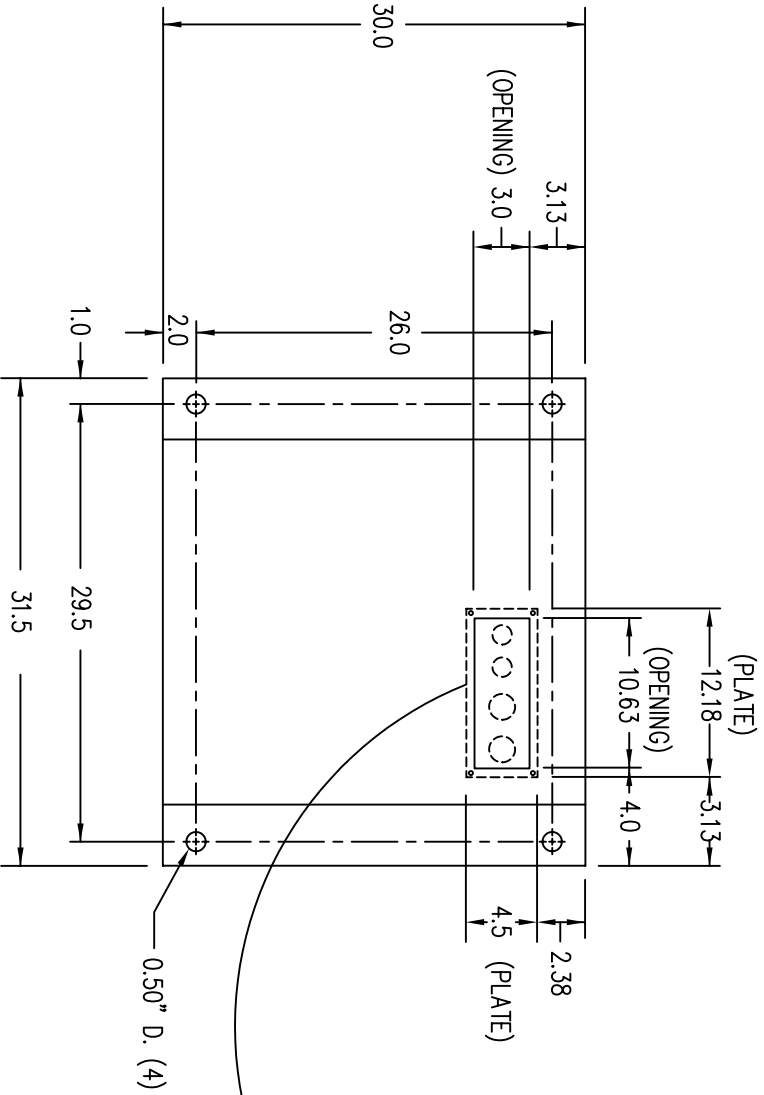


TERMINATION CONFIGURATION (BOTTOM, FRONT)  
 TERMINAL BLOCK CAPACITY: 2/0 TO 14 GA.



NOTE: ALL DIMENSIONS ARE IN INCHES UNLESS OTHERWISE SPECIFIED.

FRONT



(VIEW FROM BOTTOM OF CABINET)

