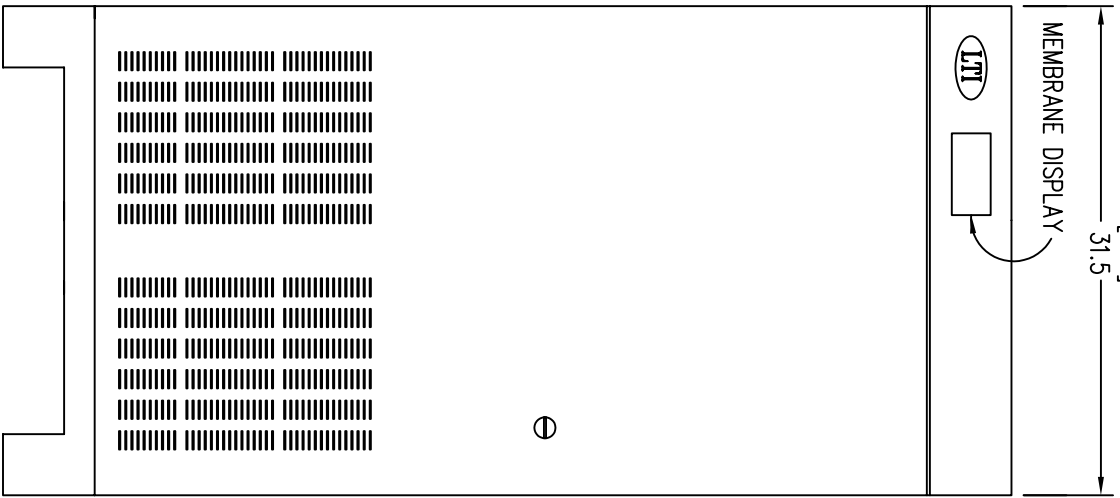
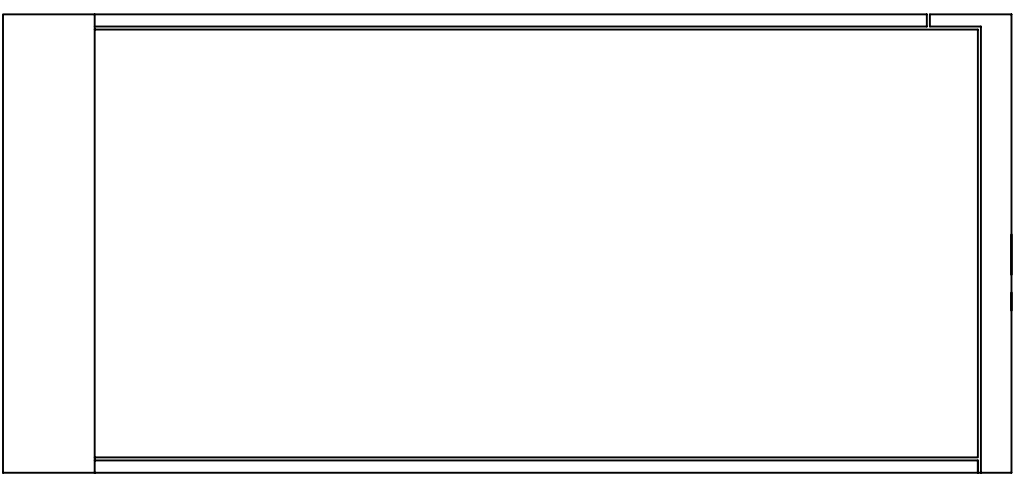




LEFT



FRONT



RIGHT

[800]
31.5
MEMBRANE DISPLAY

[762]
30.0

65.0
[1650]

Notes: Unless otherwise specified, dimensions are in inches. Dimensions within brackets [] are in millimeters.
Recommended clearance for serviceability is 36" [914] in the front and 6" [152] on the remaining sides.

LTI Power Systems, Inc.

PROUPS 8800 ENCLOSURE
10-15KVA

10KVA WEIGHT: 860 LBS. (390 kg)
15KVA WEIGHT: 950 LBS. (431 kg)

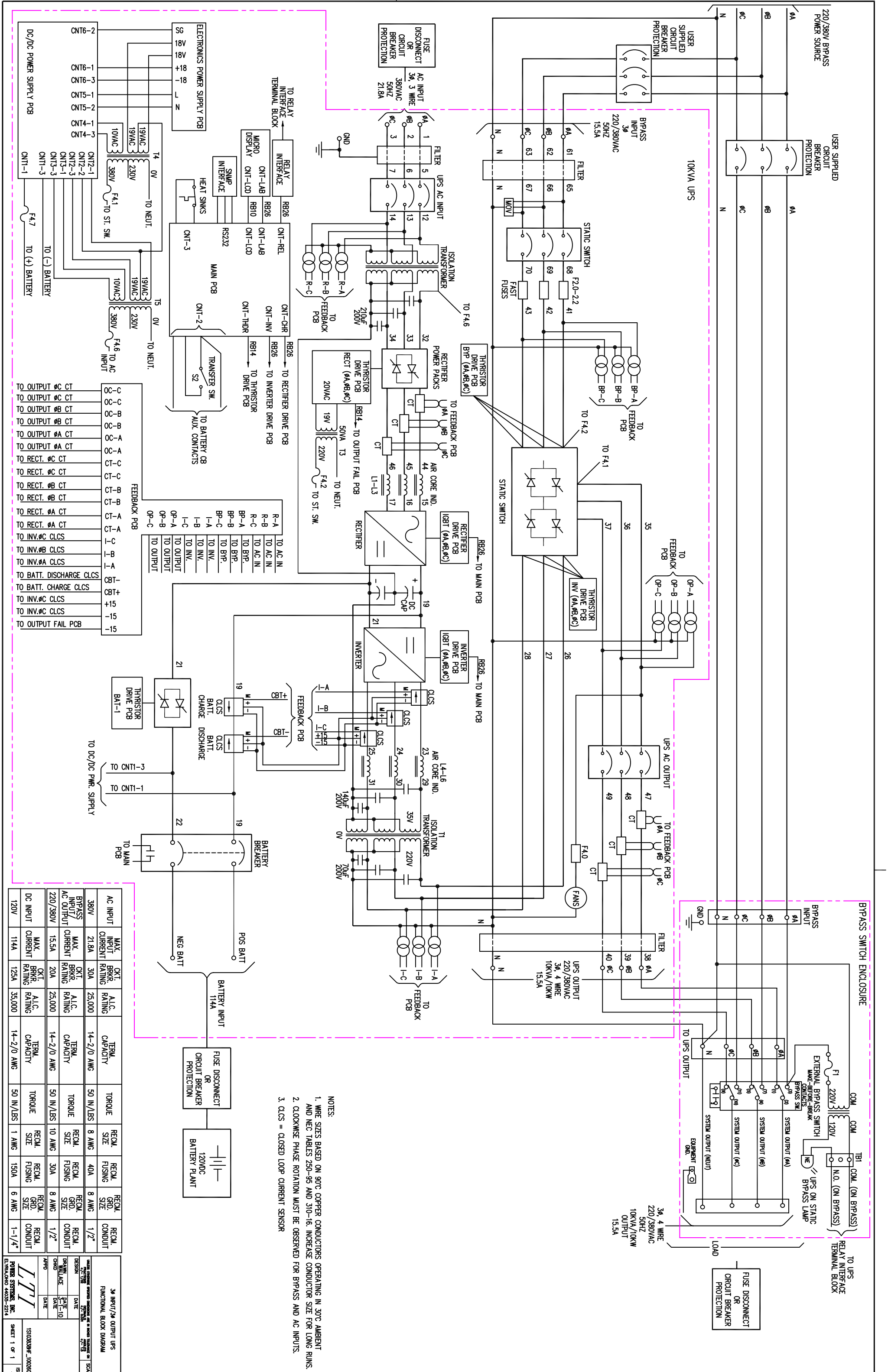
LTI - PROUPS

TEL. (440) 327-5050

10800 Middle Ave. Elyria, Ohio 44035

CAD DWG NAME: B800CAB

REV.
1



- NOTES:
1. WIRE SIZES BASED ON 90°C COPPER CONDUCTORS OPERATING IN 30°C AMBIENT AND NEC TABLES 250-95 AND 310-16. INCREASE CONDUCTOR SIZE FOR LONG RUNS.
 2. CLOCKWISE PHASE ROTATION MUST BE OBSERVED FOR BYPASS AND AC INPUTS.
 3. CLCS = CLOSED LOOP CURRENT SENSOR

AC INPUT	MAX. INPUT CURRENT RATING	CKT. BRKR. RATING	A.I.C. RATING	TERM. CAPACITY	RECM. TORQUE	RECM. FUSING	RECM. CONDUIT
380V	21.8A	30A	25,000	14-2/0 AWG	50 IN/LBS	8 AWG	1/2"
BYPASS INPUT/AC OUTPUT	15.5A	20A	25,000	14-2/0 AWG	50 IN/LBS	10 AWG	1/2"
DC INPUT	114A	125A	35,000	14-2/0 AWG	50 IN/LBS	1 AWG	1-1/4"

TO OUTPUT #C CT	TO OUTPUT #B CT	TO OUTPUT #A CT	TO RECT. #C CT	TO RECT. #B CT	TO RECT. #A CT	TO INV.#C CLCS	TO INV.#B CLCS	TO INV.#A CLCS	TO BATT. DISCHARGE CLCS	TO BATT. CHARGE CLCS	TO INV.#C CLCS	TO INV.#B CLCS	TO INV.#A CLCS	TO OUTPUT FAIL PCB
C-C	C-B	C-A	CT-C	CT-B	CT-A	I-C	I-B	I-A	GBT-	GBT+	+15	+15	+15	-15