

FRONT ACCESSIBLE AIR FILTER

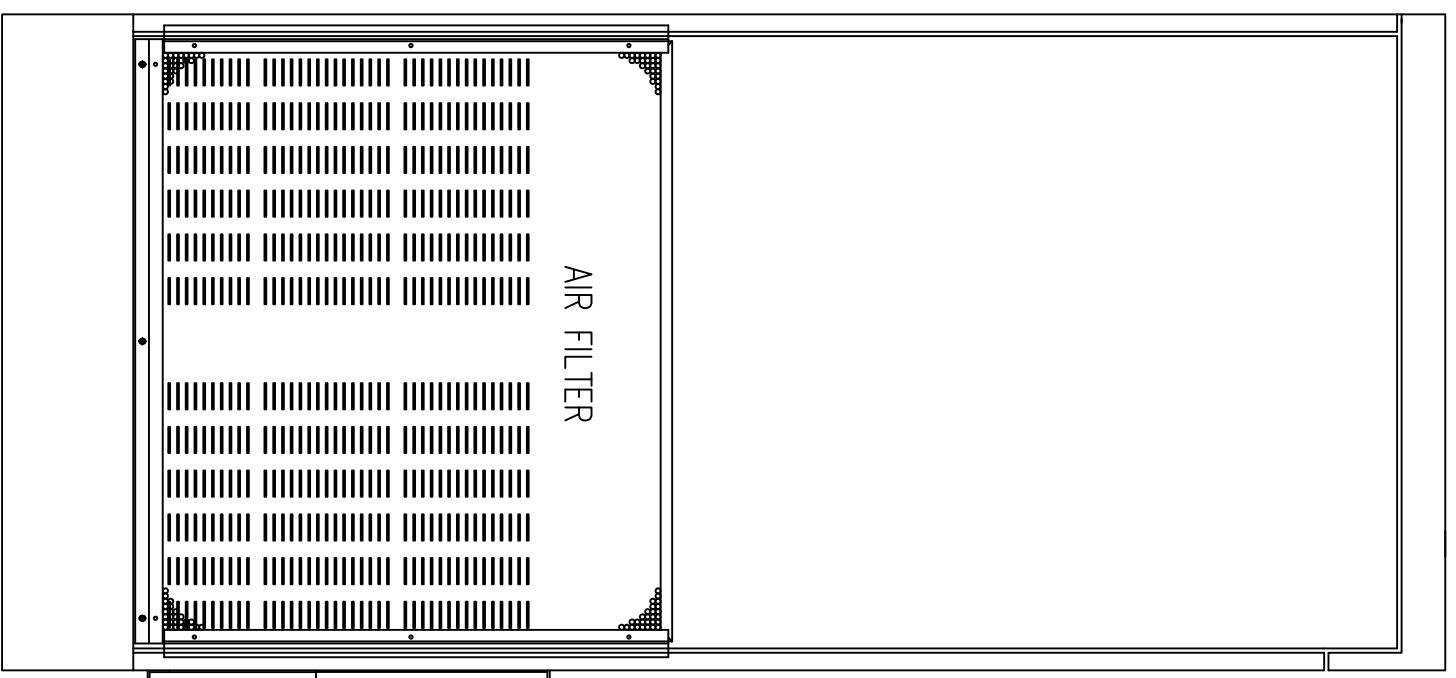
[800] 31.5

STANDARD DISPLAY

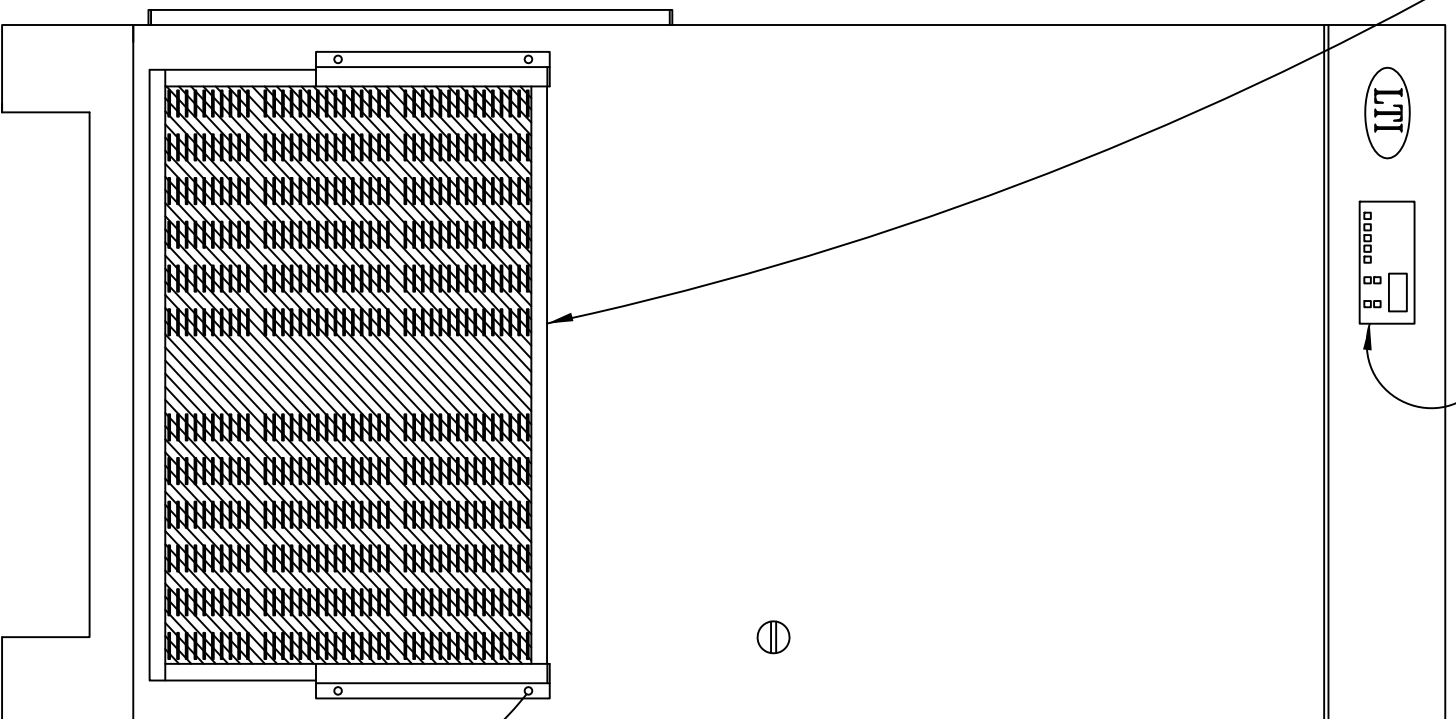


[864] 34.0

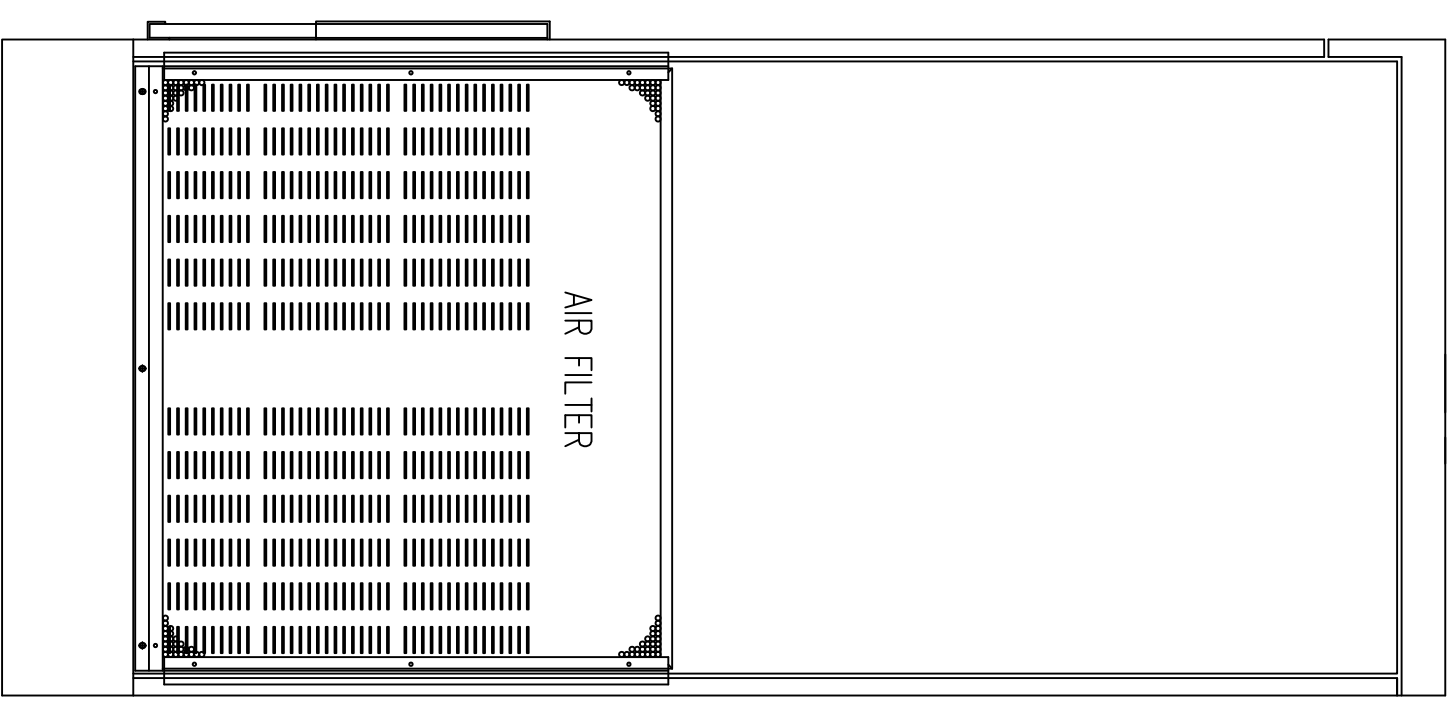
65.0 [1650]



LEFT



FRONT



RIGHT

Notes: Unless otherwise specified, dimensions are in inches. Dimensions within brackets [] are in millimeters.
Recommended clearance for serviceability is 36" [914] in the front and 6" [152] on the remaining sides.

TO REMOVE FRONT FILTER, REMOVE TOP SCREW FROM EACH SIDE BRACKET. ROTATE BRACKETS AWAY FROM FILTER, THEN SLIDE FILTER UP AND REPLACE AS NECESSARY.

LTI Power Systems, Inc.

ProUPS B800 ENCLOSURE
10KVA

10KVA WEIGHT W/SKID: 1360 LBS. (612 kg)

LTI-ProUPS

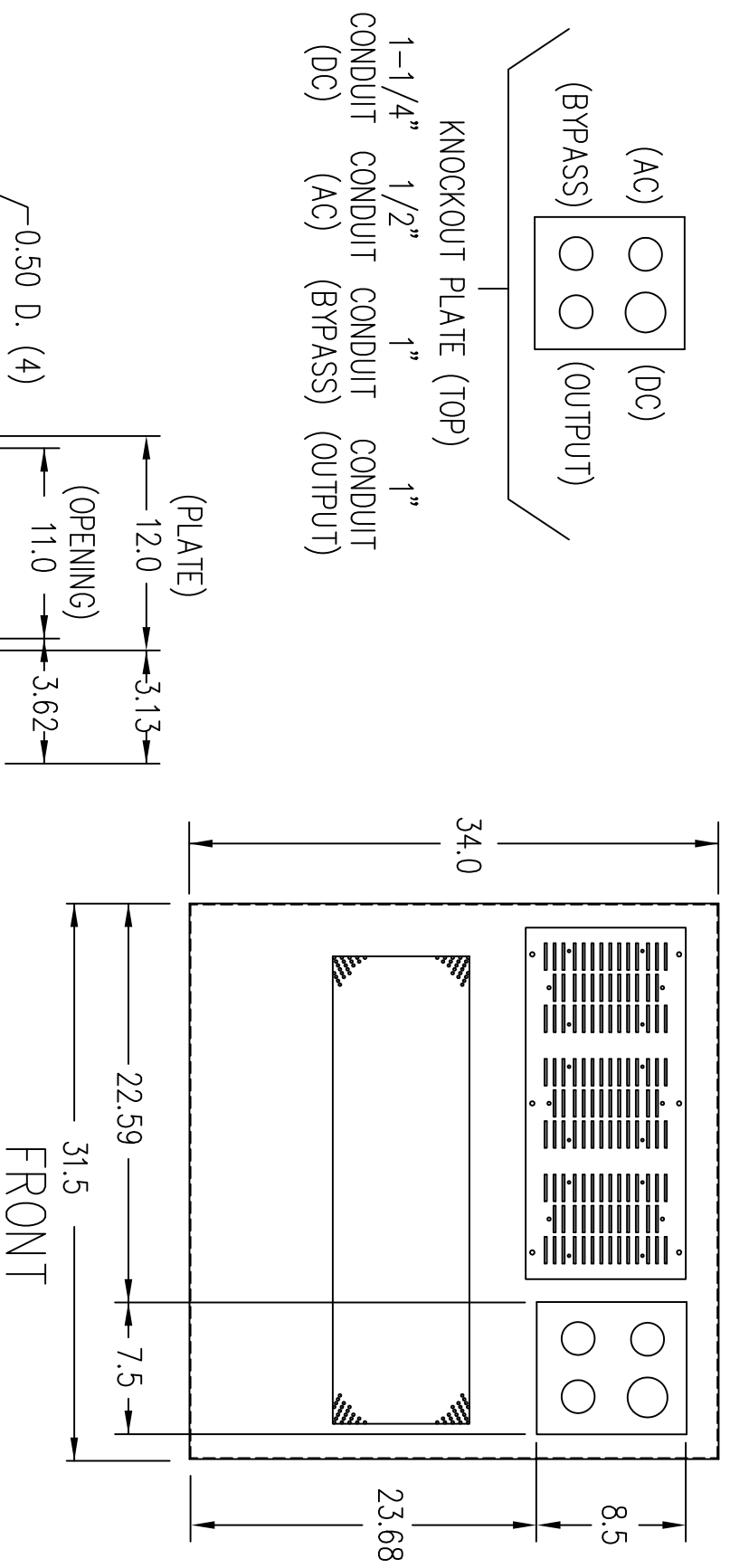
REV.
1

TEL. (440) 327-5050

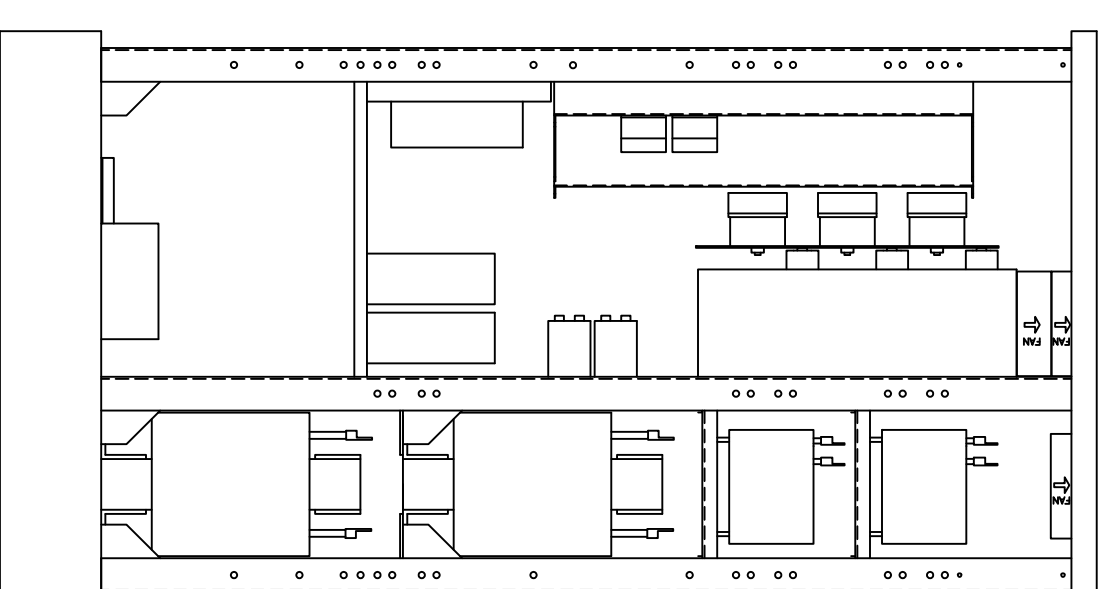
10800 Middle Ave. Elyria, Ohio 44035

CAD DWG NAME: B800CAB_104848HD_412D

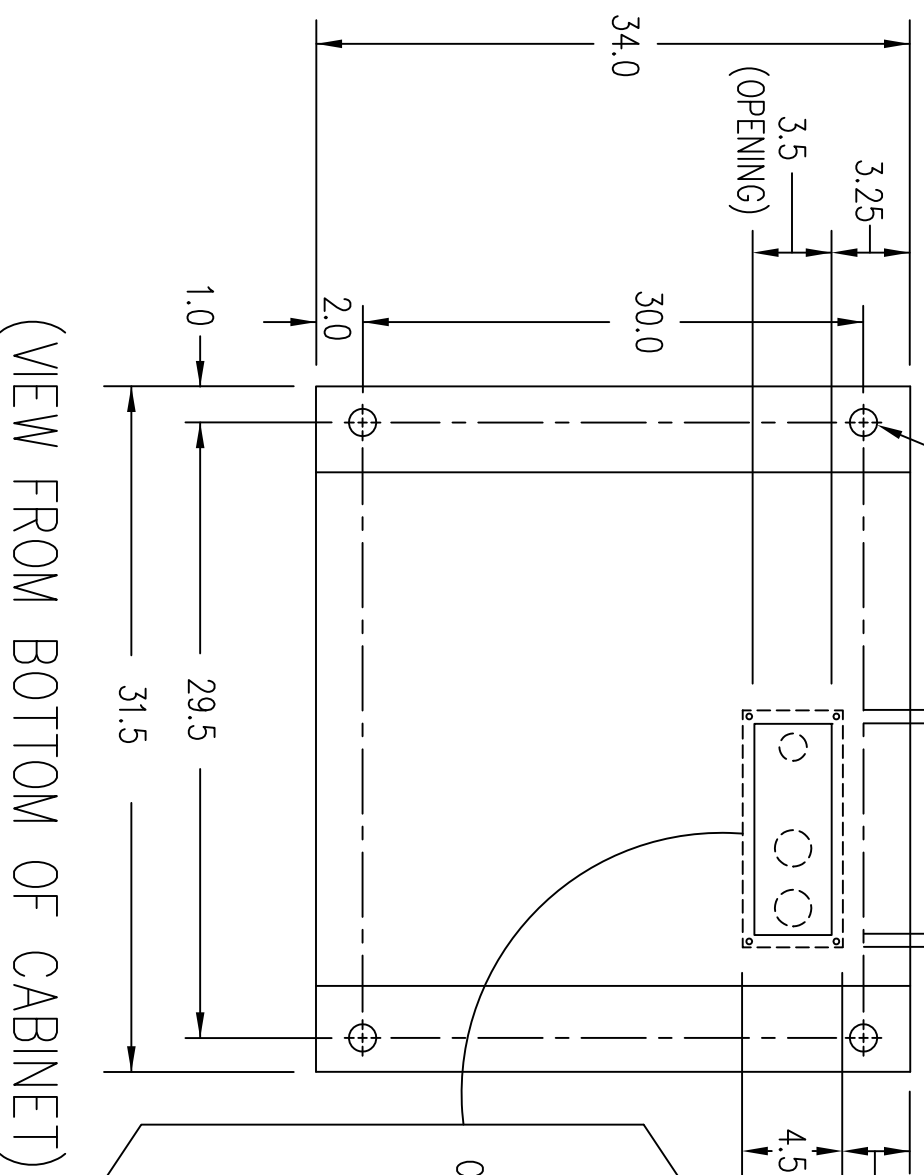
(VIEW FROM TOP OF CABINET)



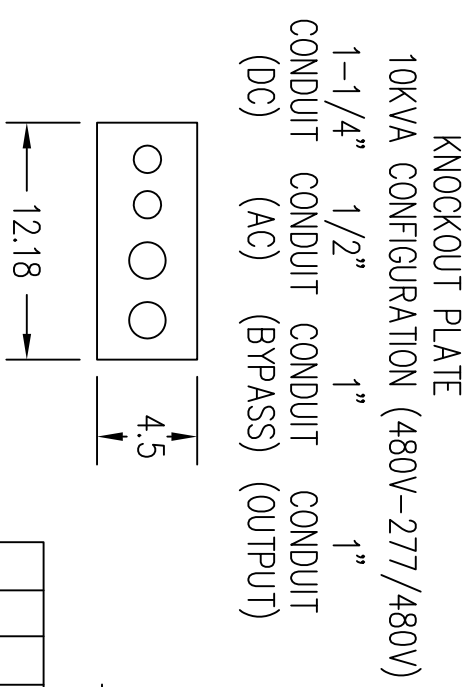
RIGHT SIDE



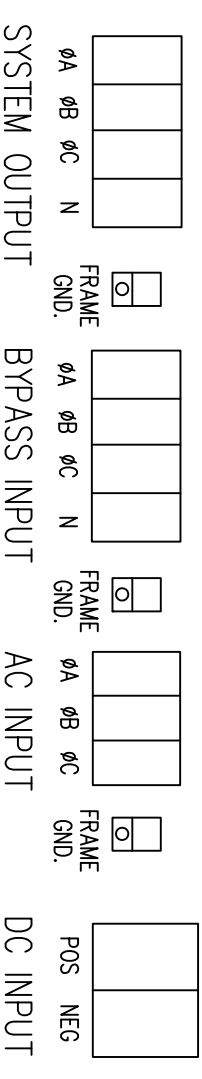
FOR TOP CABLE ENTRY, ROUTE WIRES DOWN RIGHT SIDE THROUGH OPEN AREA OF UPRIGHT CENTER PANEL TO TERMINALS LOCATED ON BASE PANEL.



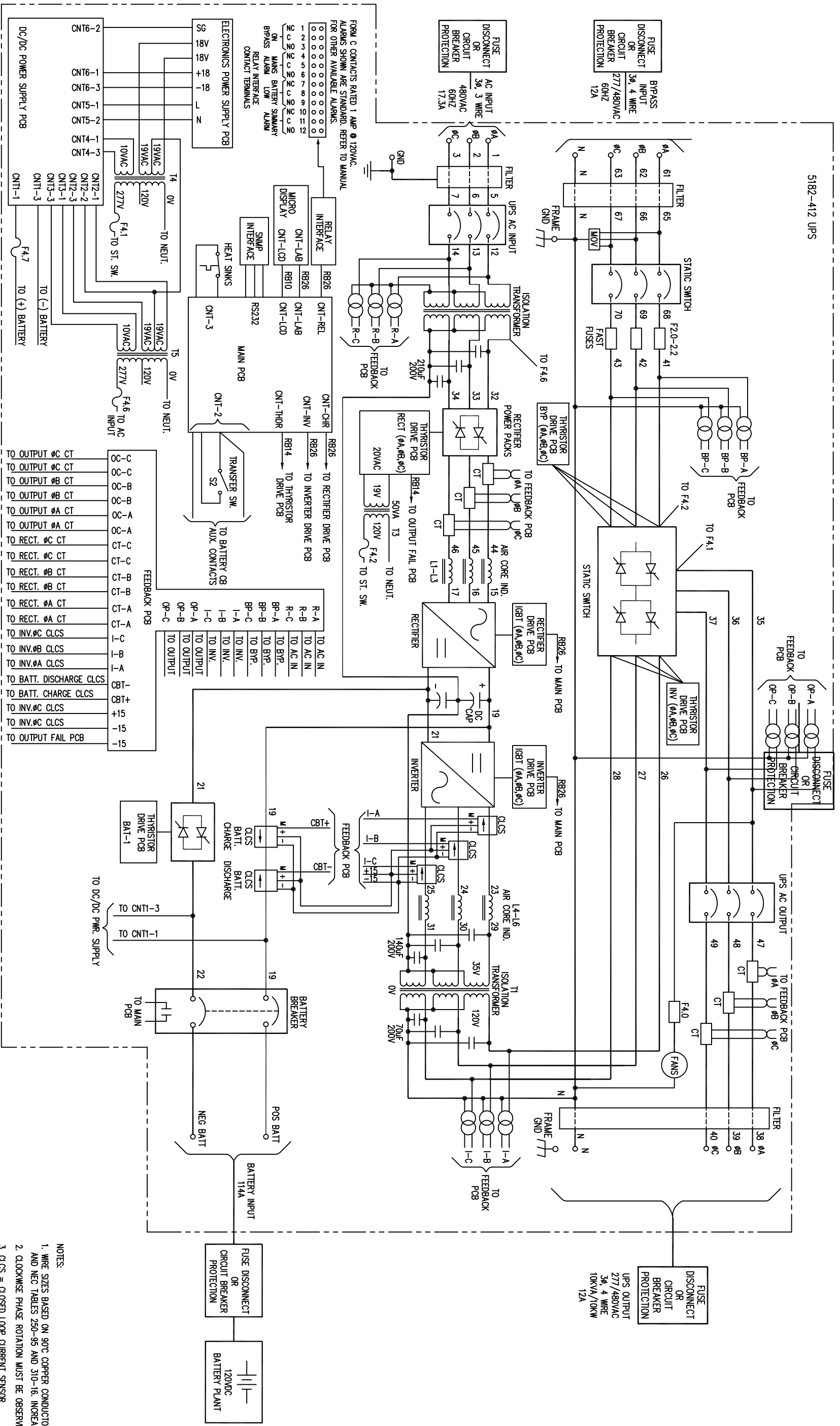
(VIEW FROM BOTTOM OF CABINET)



TERMINATION CONFIGURATION (BOTTOM, FRONT)
 TERMINAL BLOCK CAPACITY: 2/0 TO 14 GA.
 TERMINAL BLOCK CAPACITY (DC INPUT): 350 MCM TO 6 GA.



NOTE: ALL DIMENSIONS ARE IN INCHES UNLESS OTHERWISE SPECIFIED.



- NOTES:
1. WIRE SIZES BASED ON 90°C COPPER CONDUCTORS OPERATING IN 30°C AMBIENT AND NEC TABLES 250-95 AND 310-16. INCREASE CONDUCTOR SIZE FOR LONG RUNS.
 2. CLOCKWISE PHASE ROTATION MUST BE OBSERVED FOR BYPASS AND AC INPUTS.
 3. CLCS = CLOSED LOOP CURRENT SENSOR

AC INPUT	MAX. INPUT CURRENT	CT. BRKR. RATING	A.I.C. RATING	TERM. CAPACITY	TORQUE	RECM. SIZE	RECM. FUSING	RECM. CONDUIT
480V	17.3A	30A	25,000	14-2/0 AWG	50 IN/LBS	8 AWG	40A	1/2"
BYPASS INPUT/AC OUTPUT	MAX. CURRENT	CT. BRKR. RATING	A.I.C. RATING	TERM. CAPACITY	TORQUE	RECM. SIZE	RECM. FUSING	RECM. CONDUIT
277/480V	12A	20A	25,000	14-2/0 AWG	50 IN/LBS	10 AWG	30A	1/2"
DC INPUT	MAX. CURRENT	CT. BRKR. RATING	A.I.C. RATING	TERM. CAPACITY	TORQUE	RECM. SIZE	RECM. FUSING	RECM. CONDUIT
120V	114A	125A	35,000	14-2/0 AWG	50 IN/LBS	1 AWG	150A	1-1/4"

3φ INPUT/3φ OUTPUT UPS
FUNCTIONAL BLOCK DIAGRAM

DESIGN NO. 412
DATE: 2/15/13
DRAWN BY: [Signature]
CHECKED BY: [Signature]
DATE: [Signature]

POWER SYSTEMS, INC.
EVANSTON, OHIO 44035-2214

ISSUE SHEET 1 OF 1