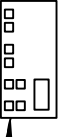


[800] 31.5

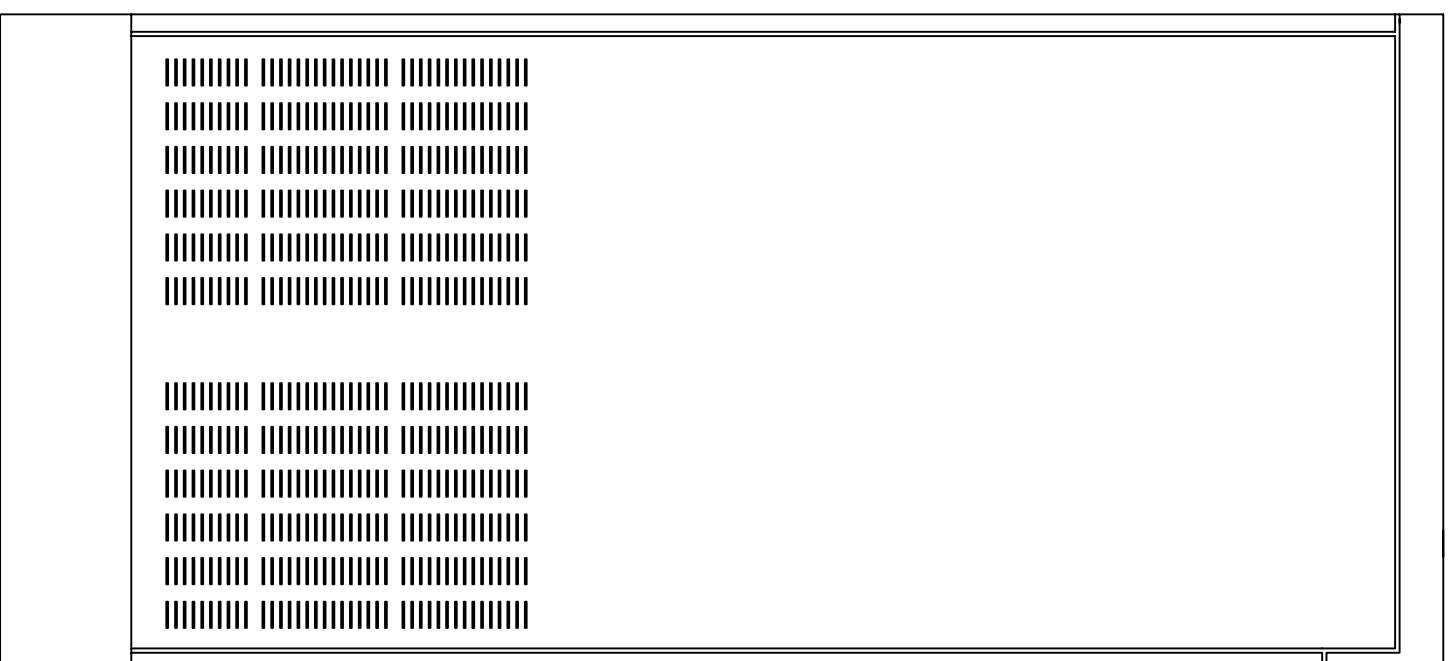
STANDARD DISPLAY



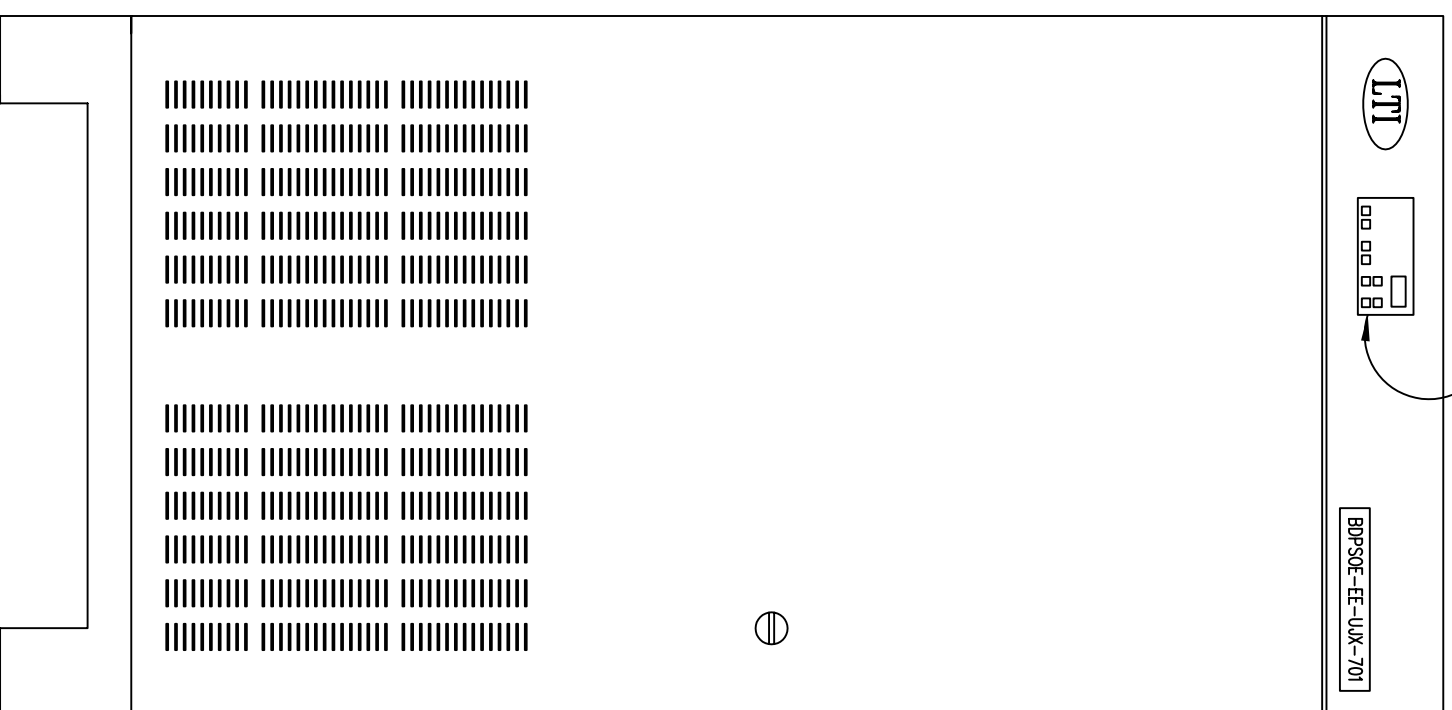
BDPSOE-EE-UJX-701

[864]
34.0

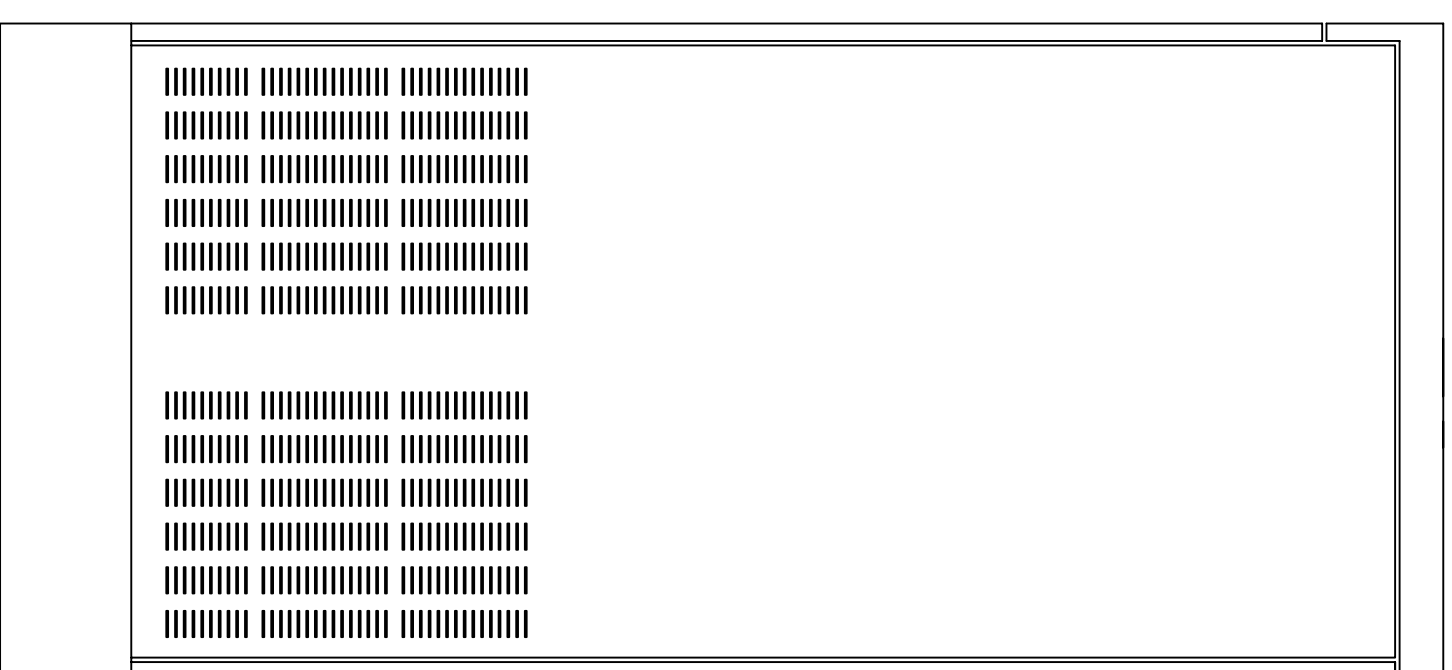
65.0
[1650]



LEFT



FRONT



RIGHT

Notes: Unless otherwise specified, dimensions are in inches. Dimensions within brackets [] are in millimeters.

Recommended clearance for serviceability is 36" [914] in the front and 6" [152] on the remaining sides.

Refer to pages 17-25 of OPERATIONS AND MAINTENANCE MANUAL for INVERTERS, 5282-610, Rev 1 for detailed information concerning the standard display.

LTI Power Systems, Inc.

TEL. (440) 327-5050

10800 Middle Ave. Elyria, Ohio 44035

ProUPS B800 ENCLOSURE

UPS Tag No. BDPSOE-EE-UJX_701

Project# 507367

Project Name: Boundary Dam E Plant Heat Rejection System

15KVA WEIGHT W/SKID: 1360 LBS. (612 kg)

15KVA

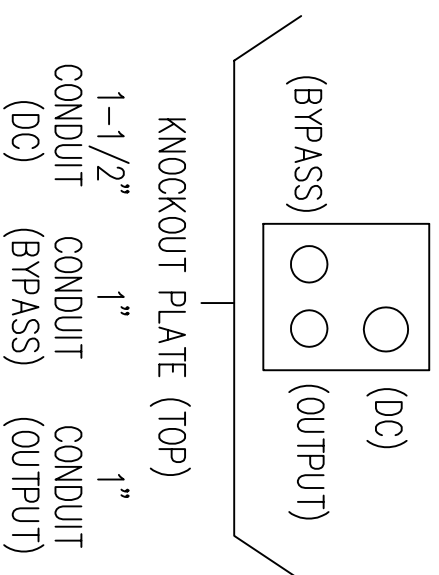
LTI-ProUPS

CAD DWG NAME: B800CAB_15H20D_212162

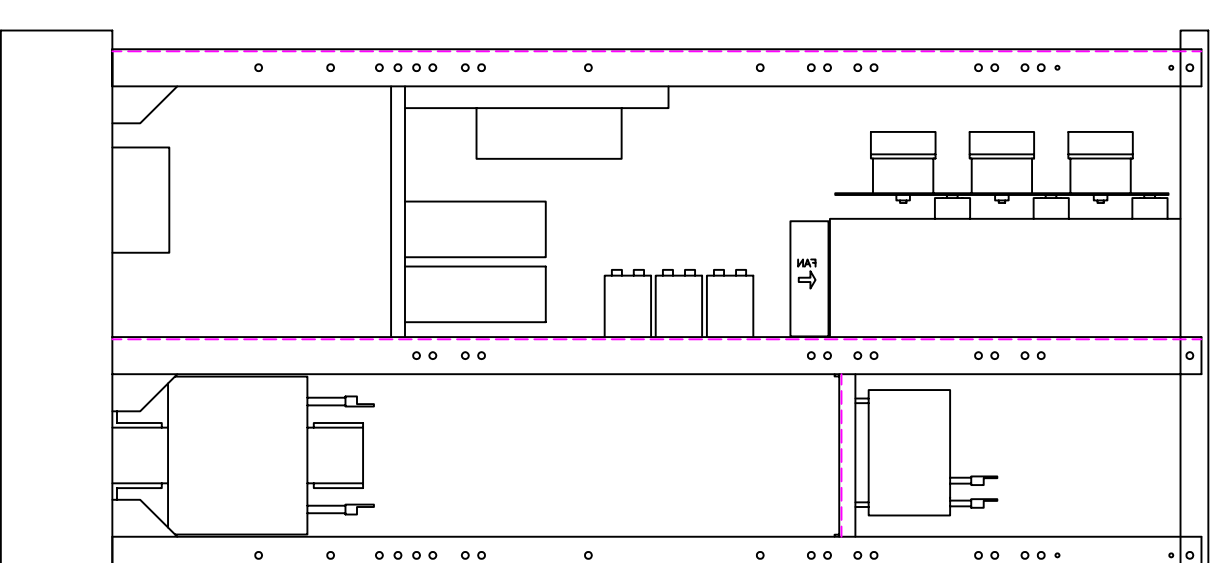
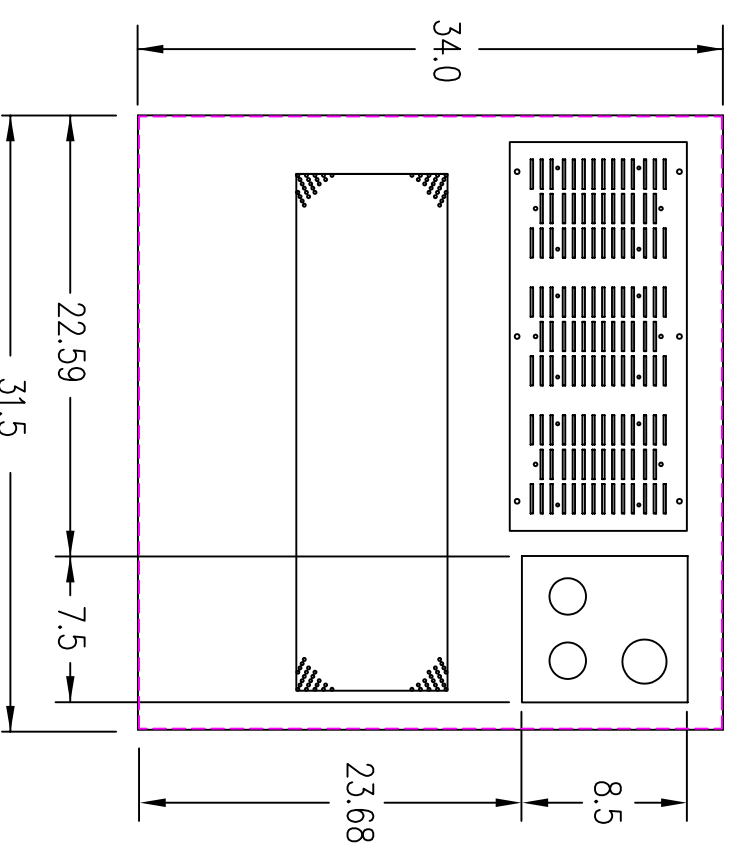
REV.

2

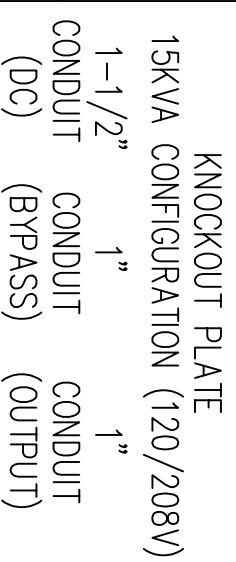
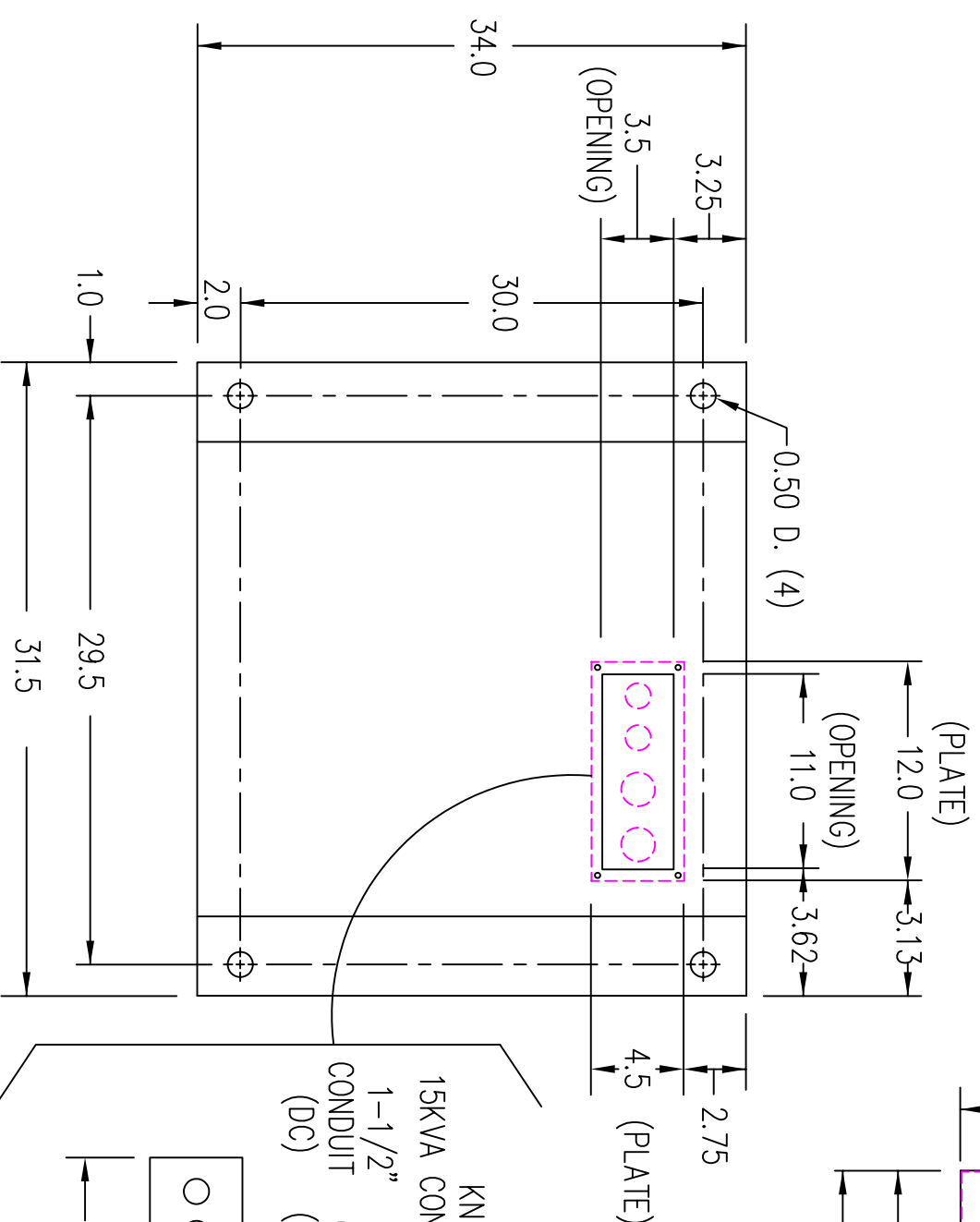
(VIEW FROM TOP OF CABINET)



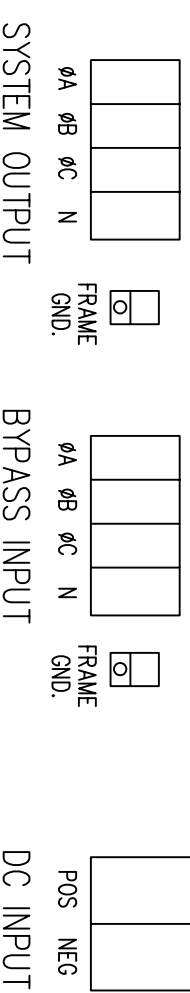
RIGHT SIDE



FRONT



TERMINATION CONFIGURATION (BOTTOM, FRONT)
TERMINAL BLOCK CAPACITY: 2/0 TO 14 GA.
TERMINAL BLOCK CAPACITY (DC INPUT): 350 MCM TO 6 GA.



NOTE: ALL DIMENSIONS ARE IN INCHES UNLESS OTHERWISE SPECIFIED.

(VIEW FROM BOTTOM OF CABINET)

LTI Power Systems, Inc.

TEL. (440) 327-5050

10800 Middle Ave. Bldg. B Elyria, Ohio 44035

15kVA ASSEMBLY

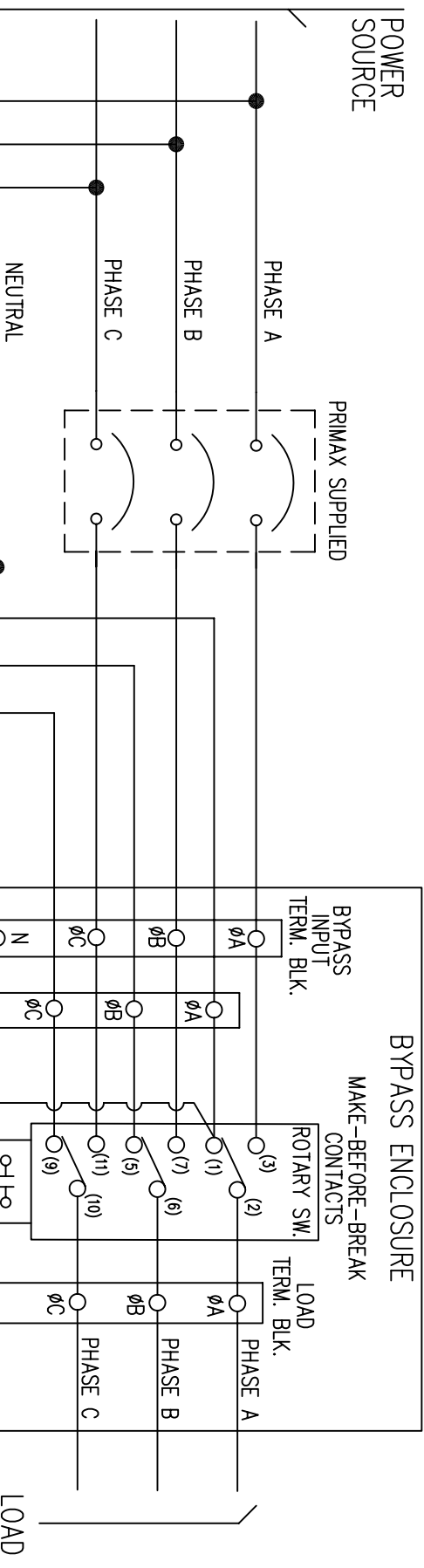
LTI-ProUPS

REV. 1

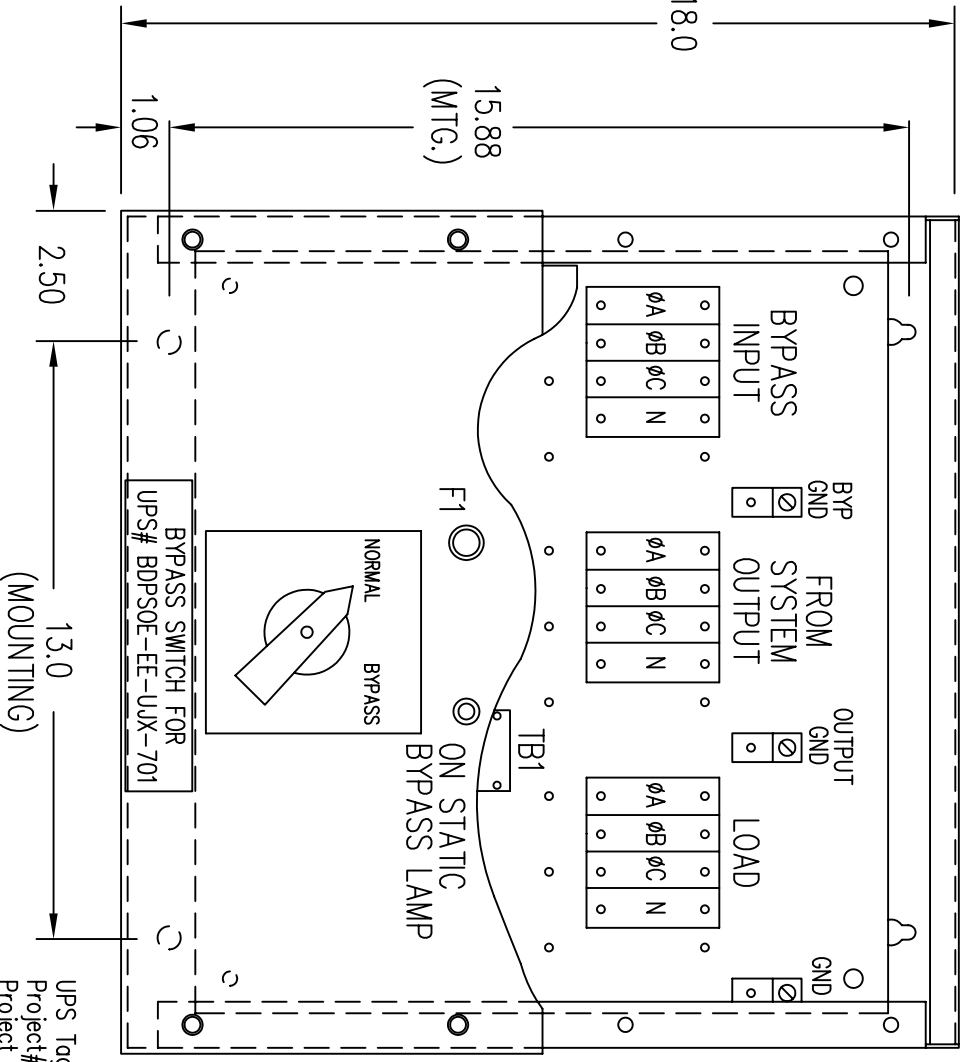
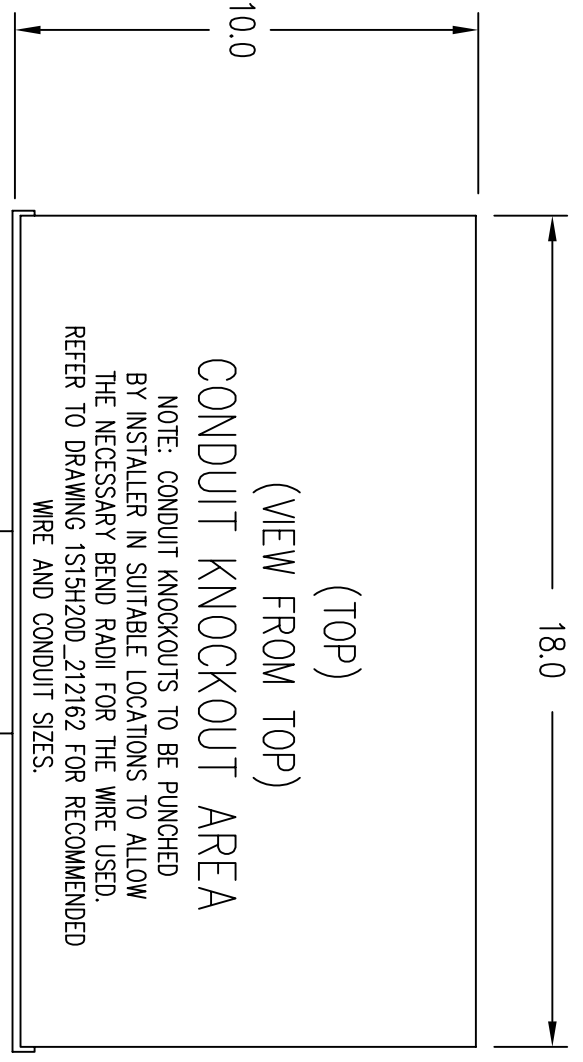
UPS Tag No. BDPSOE-EE-UJK-701
Project# 507367
Project Name: Boundary Dam E Plant Heat Rejection System

SHEET 1 OF 1

CAD DWG NAME: 15H20D BASE_212162



TO UPS RELAY INTERFACE TERMINAL BLOCK
 "ON BYPASS" COM AND "ON BYPASS" N.O.
 NOTE: TERMINAL CAPACITY: 2/0 TO 14 AWG
 TORQUE: 50 IN/LBS.
 GROUND LUG CAPACITY: 1/0 TO 14 AWG
 TORQUE: 50 IN/LBS.



NOTES:

1. OBSERVE ALL PHASING WHEN CONNECTING EXTERNAL SWITCH CONTACTS.
2. EXTERNAL ROTARY SWITCH ENCLOSURE: NEMA TYPE 1, 18"L x 18"W x 10"D.
3. DO NOT OPERATE THE ROTARY SWITCH TO BYPASS POSITION WITH THE "UPS" DE-ENERGIZED.
4. NORMAL- THE UPS SUPPLYING THE LOAD.
 BYPASS- THE HARD BYPASS SOURCE SUPPLYING THE LOAD.
5. REMOVE BLANK COVER PANEL TO ACCESS TERMINAL CONNECTIONS.

MOUNTING HOLES LOCATED ON BOTTOM SURFACE OF ENCLOSURE AND ARE DESIGNED FOR 5/16 HARDWARE.

BYPASS ENCLOSURE (FRONT-VIEW FROM FRONT) (BLANK COVER PANEL REMOVED)

UPS Tdg No. BDP50E-EE-LUX-701
 Project# 507367
 Project Name: Boundary Dam E
 Plant Heat Rejection System

DESIGN		DATE	SO#	212162
DRAWING		DATE	IC#	4232-901
CHD	DATE	DATE	SHEET 1 of 1	
APPD	DATE	DATE	ISSUE 2	
REVISION		DATE	ISSUE	