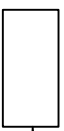
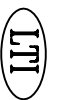


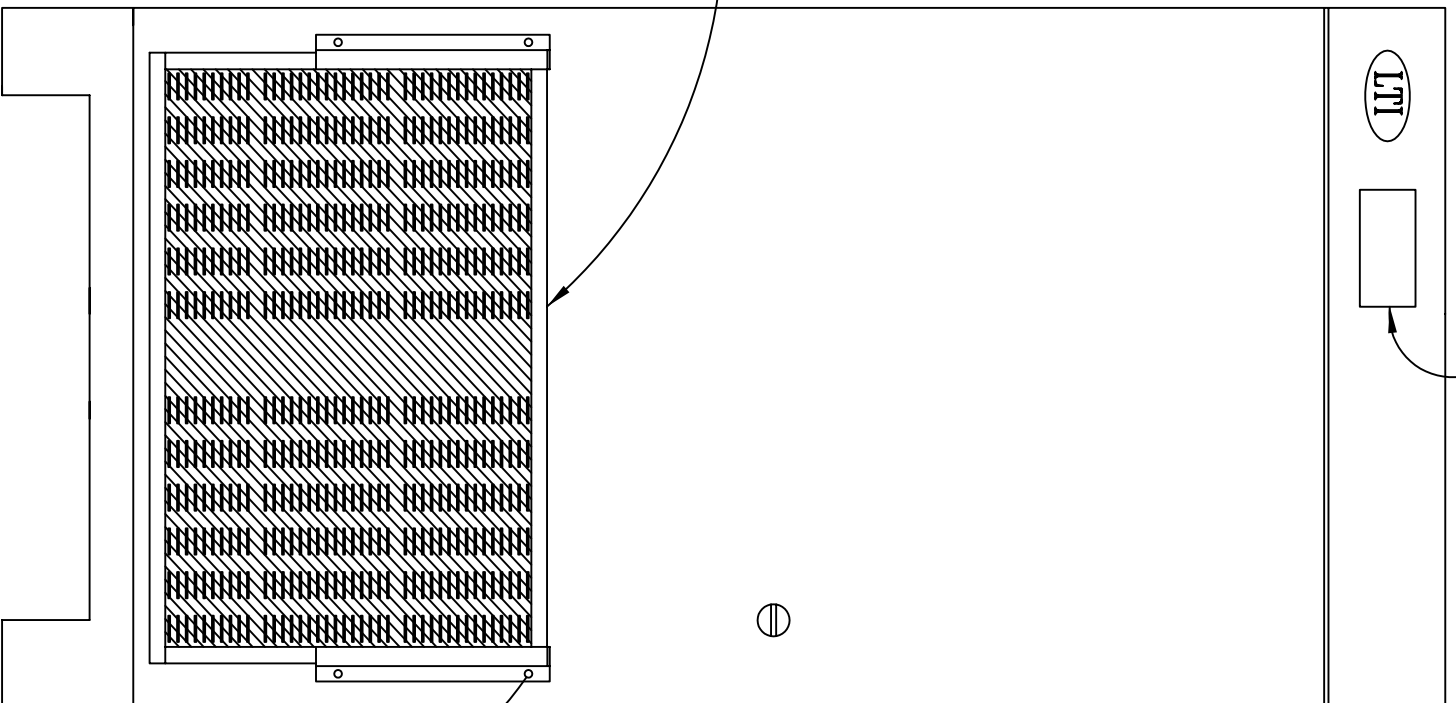


[800]
31.5

STANDARD DISPLAY

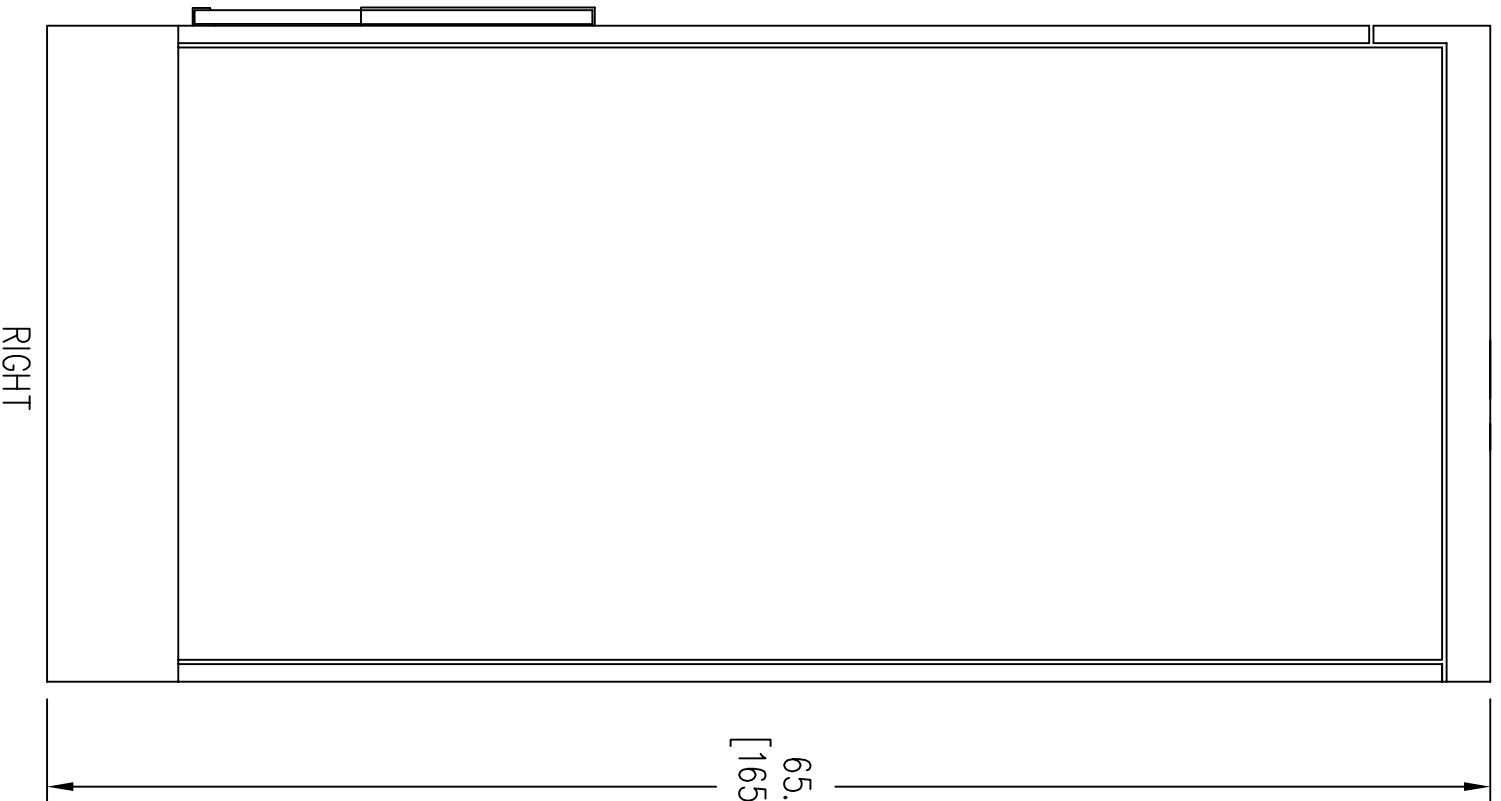


FRONT
ACCESSIBLE
AIR FILTER



[762]
30.0

65.0
[1650]



Notes: Unless otherwise specified, dimensions are in inches. Dimensions within brackets [] are in millimeters.
Recommended clearance for serviceability is 36" [914] in the front and 6" [152] on the remaining sides.

TO REMOVE FRONT FILTER, REMOVE TOP SCREW FROM EACH SIDE BRACKET. ROTATE BRACKETS AWAY FROM FILTER, THEN SLIDE FILTER UP AND REPLACE AS NECESSARY.

LTI Power Systems, Inc.

ProUPS B800 ENCLOSURE
10/15KVA INVERTER

10/15KVA WEIGHT W/SKID: 1300 LBS. (585 kg)

LTI-ProUPS

TEL. (440) 327-5050

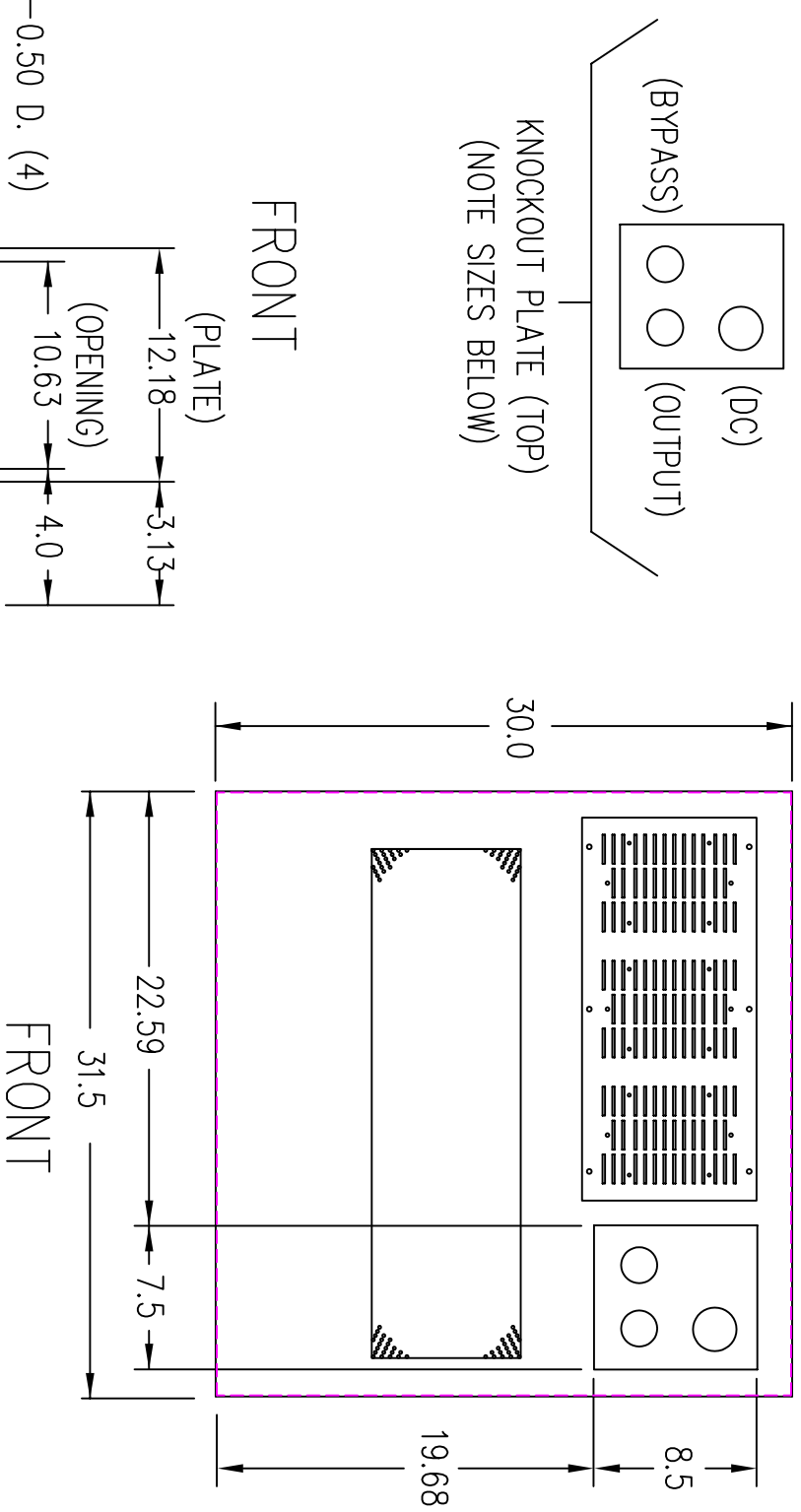
10800 Middle Ave. Elyria, Ohio 44035

CAD DWG NAME: B800CAB_FILTER_10H20F

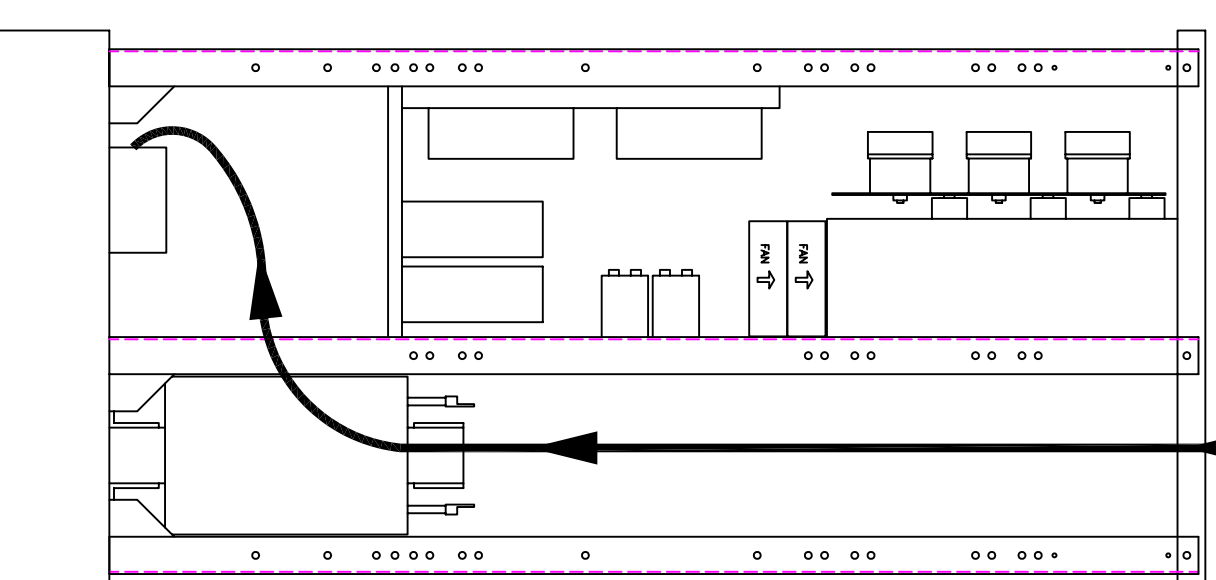
REV.

1

(VIEW FROM TOP OF CABINET)



RIGHT SIDE

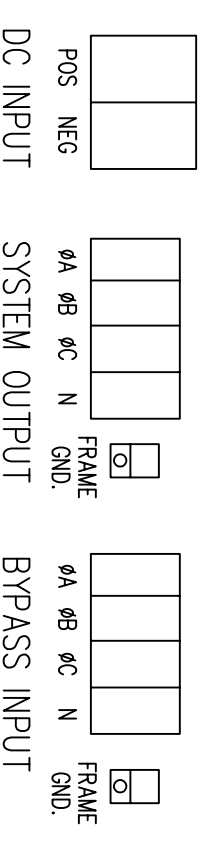


FOR TOP CABLE ENTRY, ROUTE WIRES DOWN RIGHT SIDE THROUGH OPEN AREA OF UPRIGHT CENTER PANEL TO TERMINALS LOCATED ON BASE PANEL.

TERMINATION CONFIGURATION (BOTTOM, FRONT)

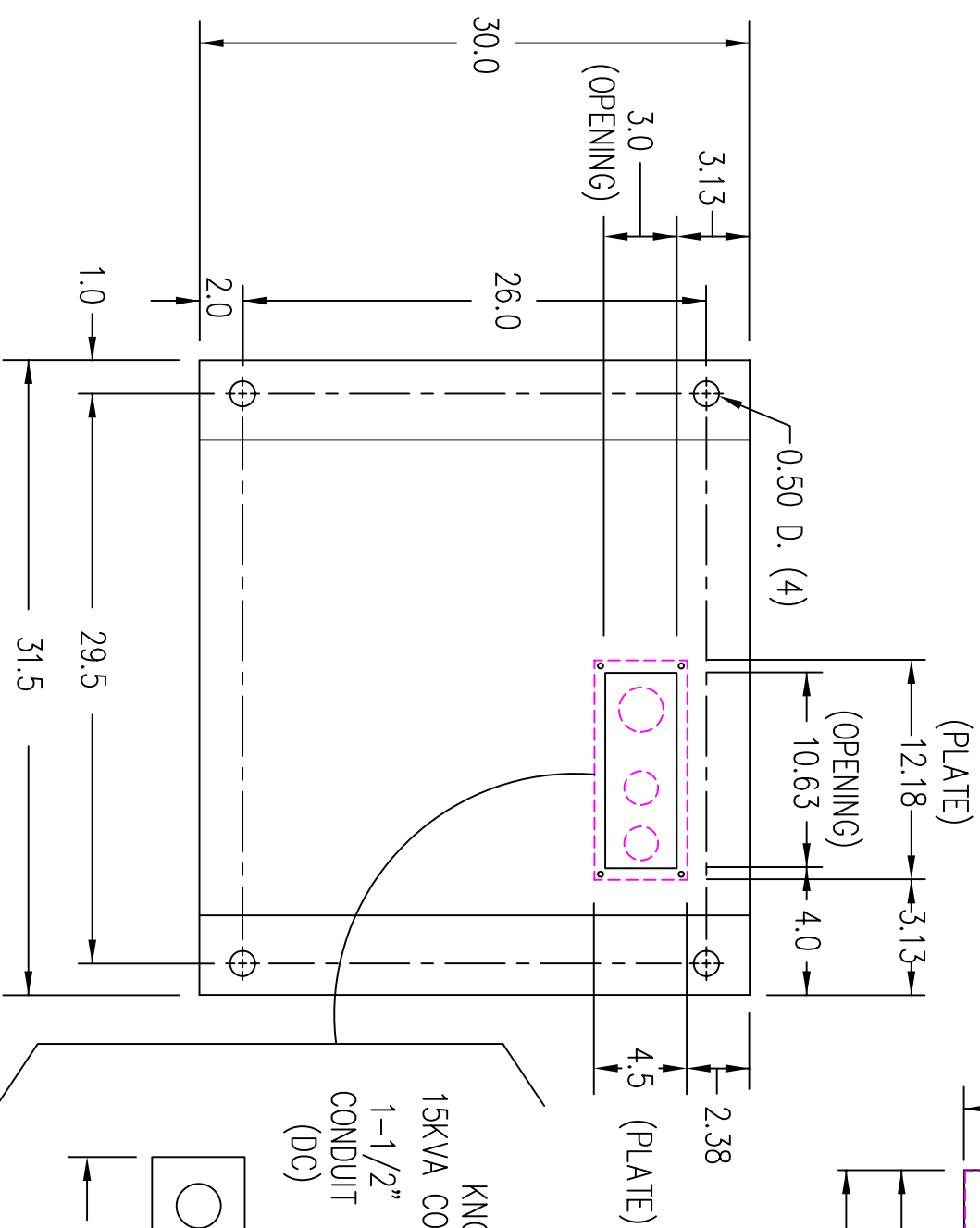
TERMINAL BLOCK CAPACITY (BYP. INPUT/AC OUTPUT): 2/0 TO 14 GA.

TERMINAL BLOCK CAPACITY (DC INPUT): 350 MCM TO 6 GA.



NOTE: ALL DIMENSIONS ARE IN INCHES UNLESS OTHERWISE SPECIFIED.

(VIEW FROM BOTTOM OF CABINET)



FRONT

FRONT

LTI Power Systems, Inc.

TEL. (440) 327-5050

10800 Middle Ave. Bldg. B Elyria, Ohio 44035

15KVA INVERTER ASSEMBLY

SHEET 1 OF 1

LTI-ProUPS

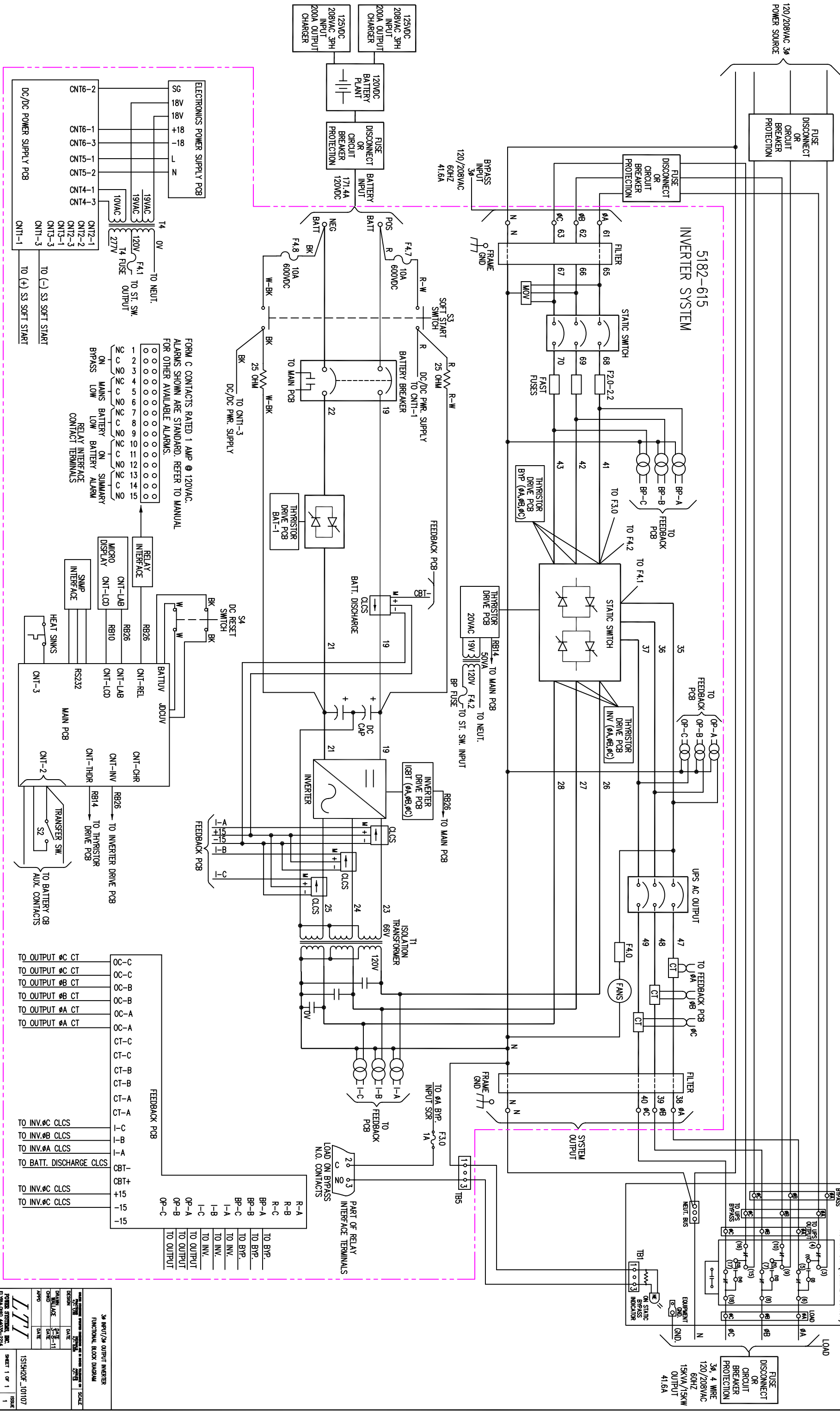
CAD DWG NAME: 15H20F_BASE

REV.

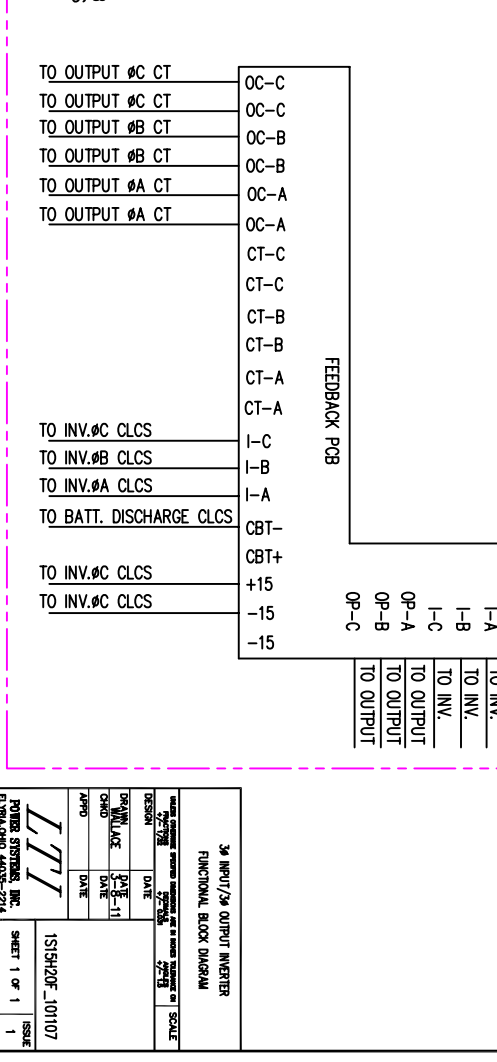
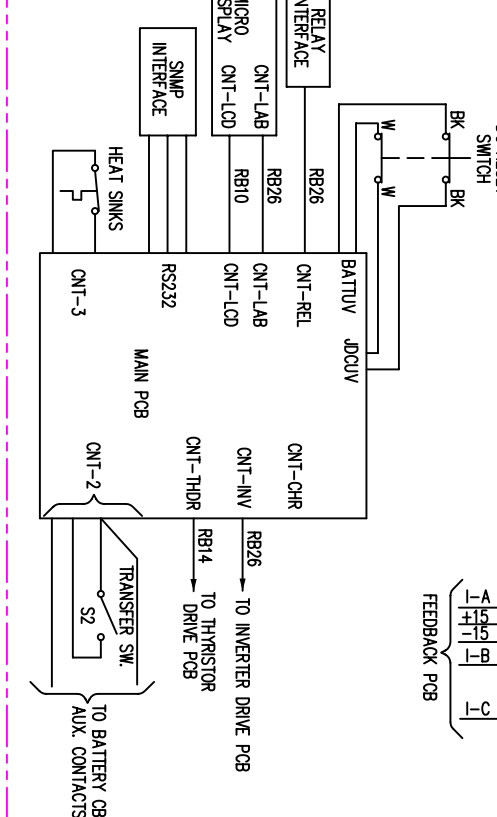
1

BYPASS INPUT/AC OUTPUT	MAX. CURRENT	OKT. BRKR. RATING	A.I.C. RATING	TERM. CAPACITY	TORQUE	RECM. SIZE	RECM. FUSING	RECM. GRD. SIZE	RECM. CONDUIT
120/208V	41.6A	50A	25,000	14-2/0 AWG	50 IN/LBS	6 AWG	60A	8 AWG	3/4"
DC INPUT	MAX. CURRENT	OKT. BRKR. RATING	A.I.C. RATING	TERM. CAPACITY	TORQUE <td>RECM. SIZE</td> <td>RECM. FUSING</td> <td>RECM. GRD. SIZE</td> <td>RECM. CONDUIT</td>	RECM. SIZE	RECM. FUSING	RECM. GRD. SIZE	RECM. CONDUIT
120V	171.4A	175A	35,000	6 GA. - 350 MCM	275 IN/LBS	3/0 AWG	200A	4 AWG	1-1/2"

- NOTES:
1. WIRE SIZES BASED ON 90°C COPPER CONDUCTORS OPERATING IN 30°C AMBIENT AND NEC TABLES 250-95 AND 310-16. INCREASE CONDUCTOR SIZE FOR LONG RUNS.
 2. CLOCKWISE PHASE ROTATION MUST BE OBSERVED FOR BYPASS INPUT.
 3. CLCS = CLOSED LOOP CURRENT SENSOR



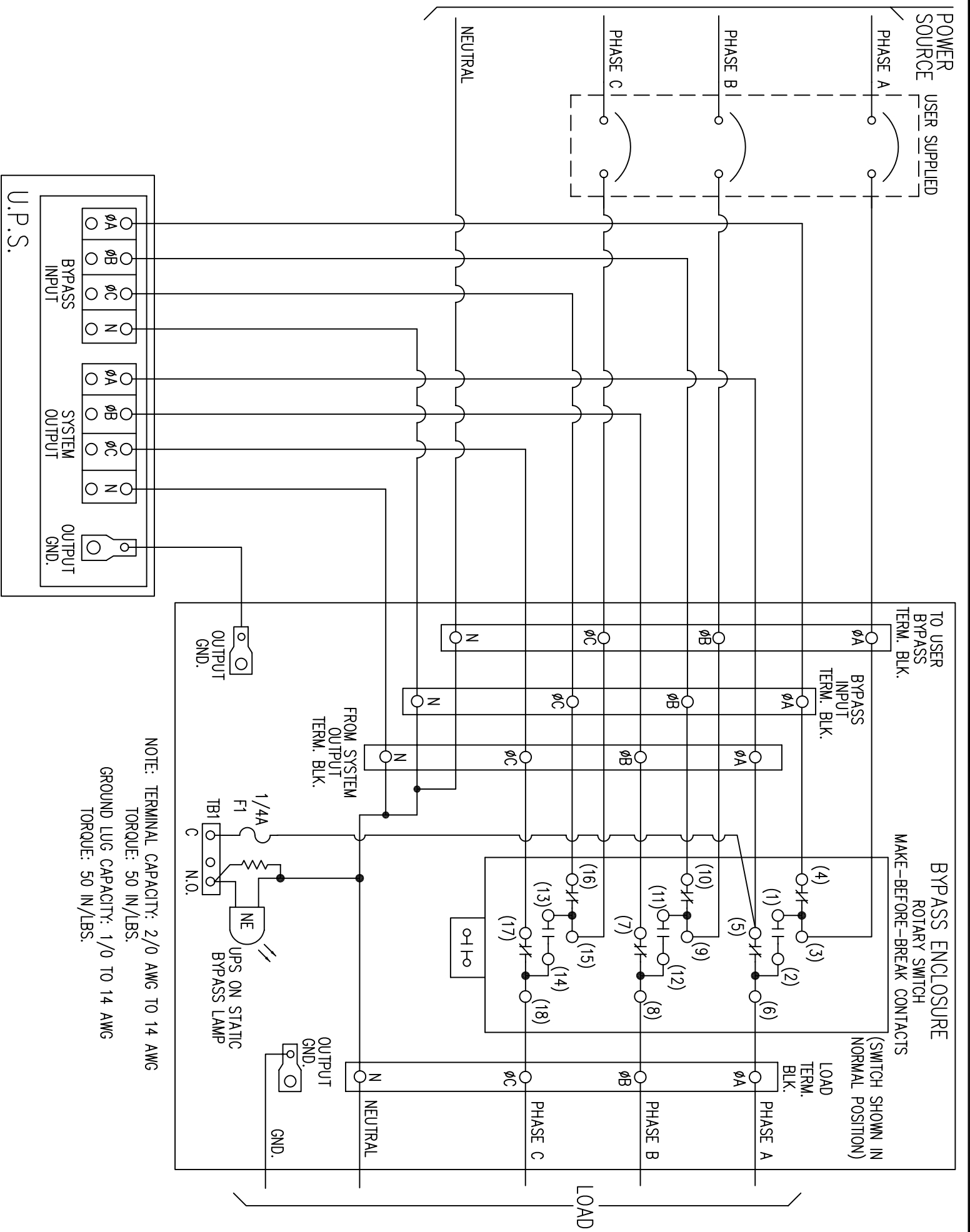
FORM C CONTACTS RATED 1 AMP @ 120VAC.
ALARMS SHOWN ARE STANDARD. REFER TO MANUAL FOR OTHER AVAILABLE ALARMS.



3Φ INPUT/2Φ OUTPUT INVERTER
FUNCTIONAL BLOCK DIAGRAM

DATE	SCALE
DESIGN	
CHECK	
DATE	
DATE	
DATE	
DATE	

POWER SYSTEMS, INC.
1515H20F_101107
SHEET 1 OF 1
ISSUE 1

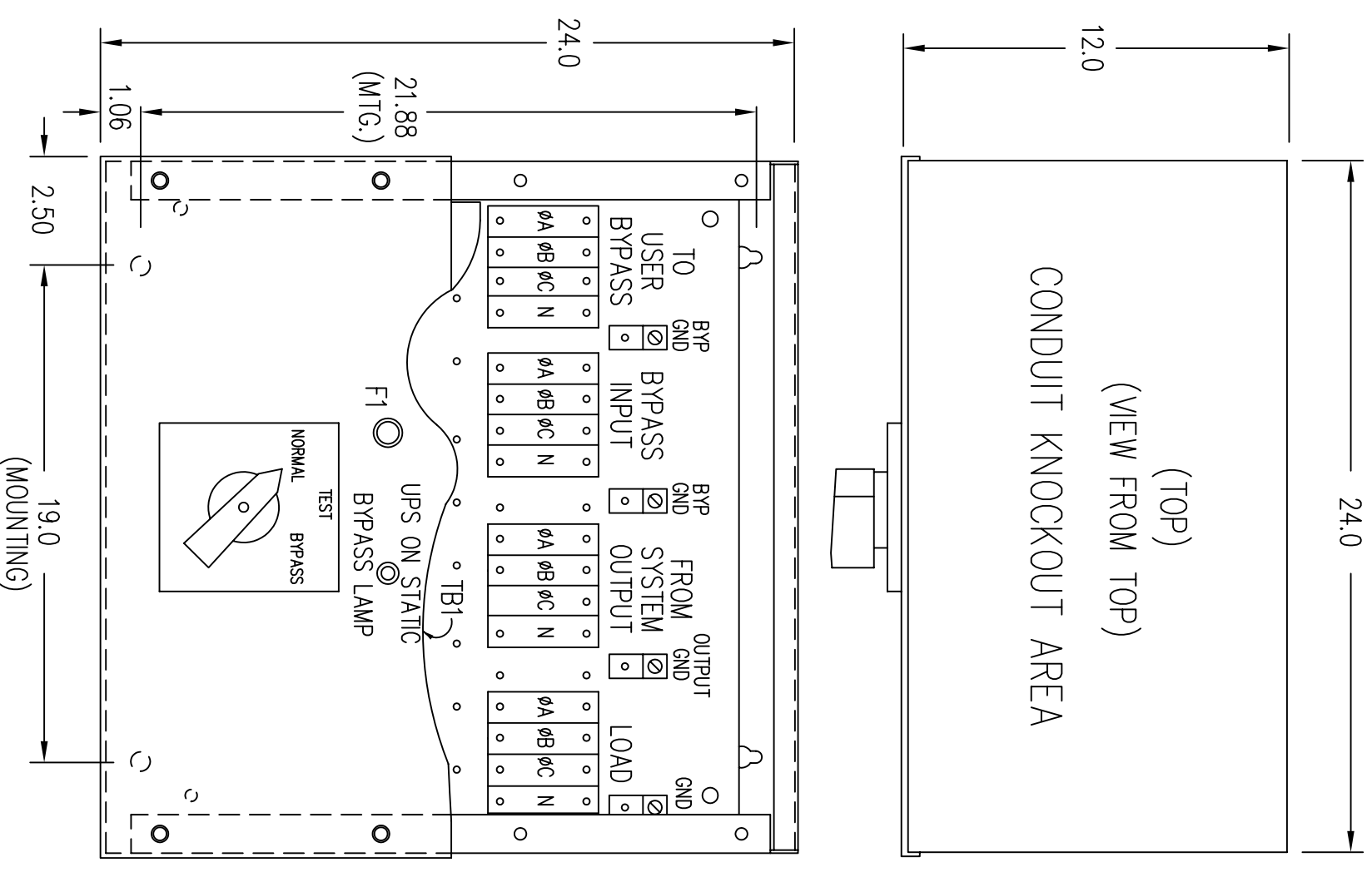


NOTES:

1. OBSERVE ALL PHASING WHEN CONNECTING EXTERNAL SWITCH CONTACTS.
2. EXTERNAL ROTARY SWITCH ENCLOSURE: NEMA TYPE 1, 24" L x 24" W x 12" D.
3. DO NOT OPERATE THE ROTARY SWITCH WITHOUT THE "UPS" LOAD ON STATIC BYPASS.
4. NORMAL- THE UPS SUPPLYING THE LOAD.
TEST- THE HARD BYPASS SOURCE SUPPLYING THE LOAD (BYPASS SOURCE STILL CONNECTED TO UPS BYPASS INPUT).
BYPASS- THE HARD BYPASS SOURCE SUPPLYING THE LOAD (BYPASS SOURCE NOT CONNECTED TO UPS BYPASS INPUT).
5. REMOVE BLANK COVER PANEL TO ACCESS TERMINAL CONNECTIONS.

MOUNTING HOLES LOCATED ON BOTTOM SURFACE OF ENCLOSURE AND ARE DESIGNED FOR 5/16 HARDWARE.

BYPASS ENCLOSURE (FRONT-VIEW FROM FRONT) (BLANK COVER PANEL REMOVED)



100A THREE PHASE OUTPUT		DESIGN	DATE	IC4232-910
EXTERNAL MAINTENANCE 3 POSITION BYPASS SWITCH (NORMAL-TEST-BYPASS)		DATE	DATE	
DATE	DATE	DATE	DATE	SHEET 1 OF 1
ISSUE	ISSUE	ISSUE	ISSUE	