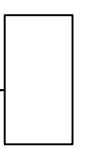
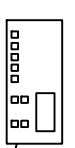


FRONT
ACCESSIBLE
AIR FILTER

[800] 31.5

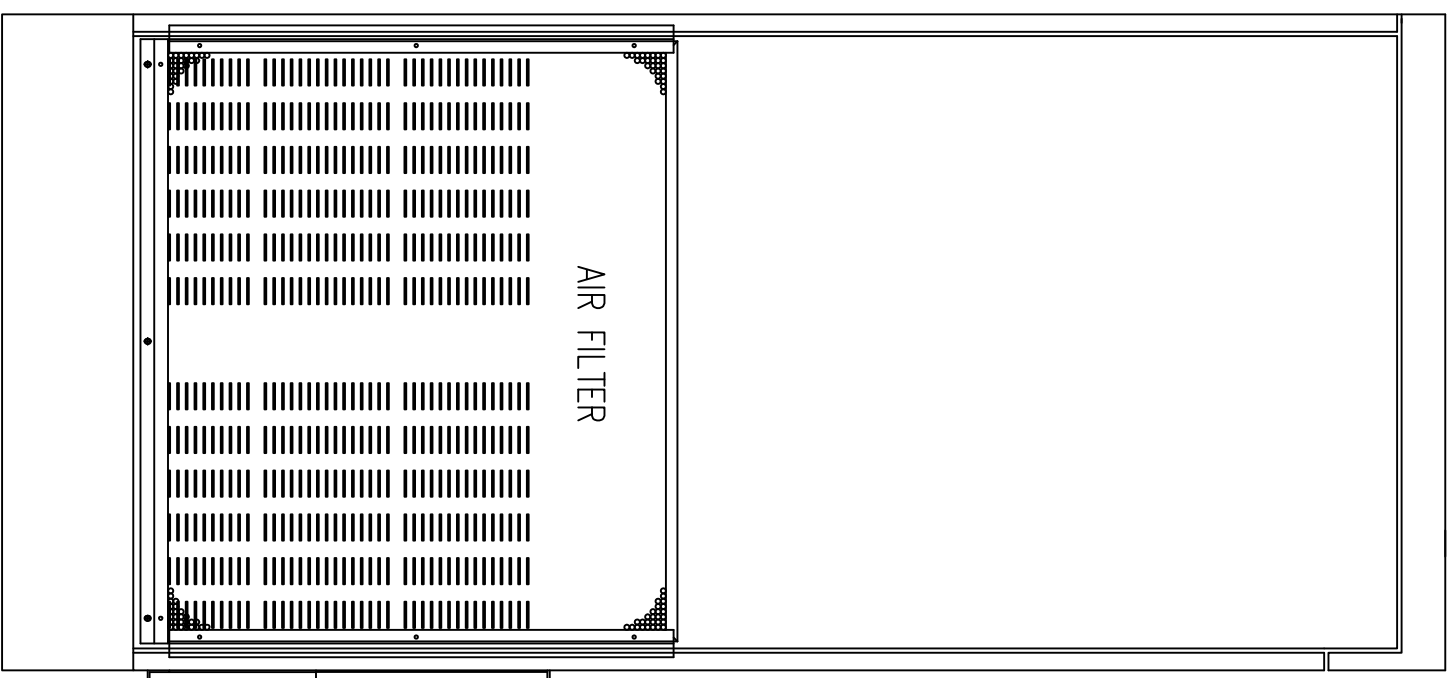
STANDARD DISPLAY



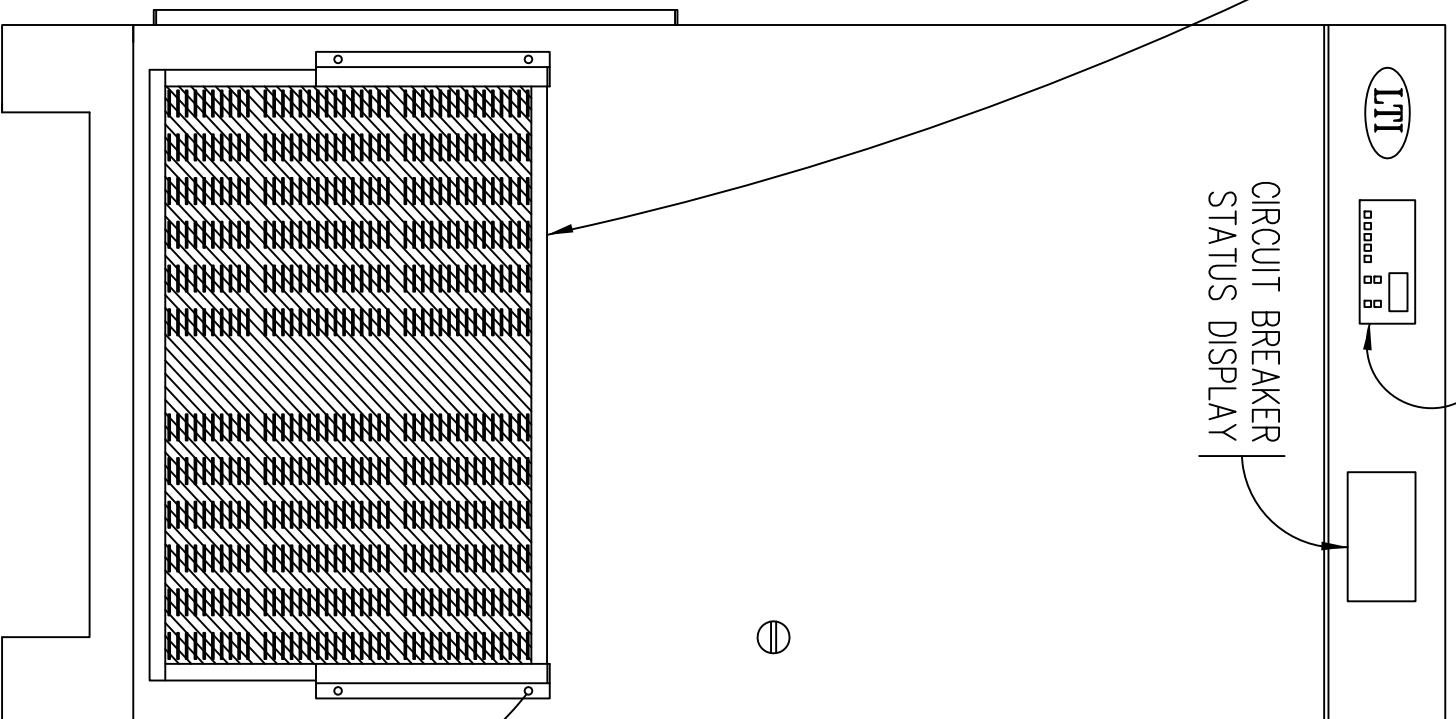
CIRCUIT BREAKER
STATUS DISPLAY

[864]
34.0

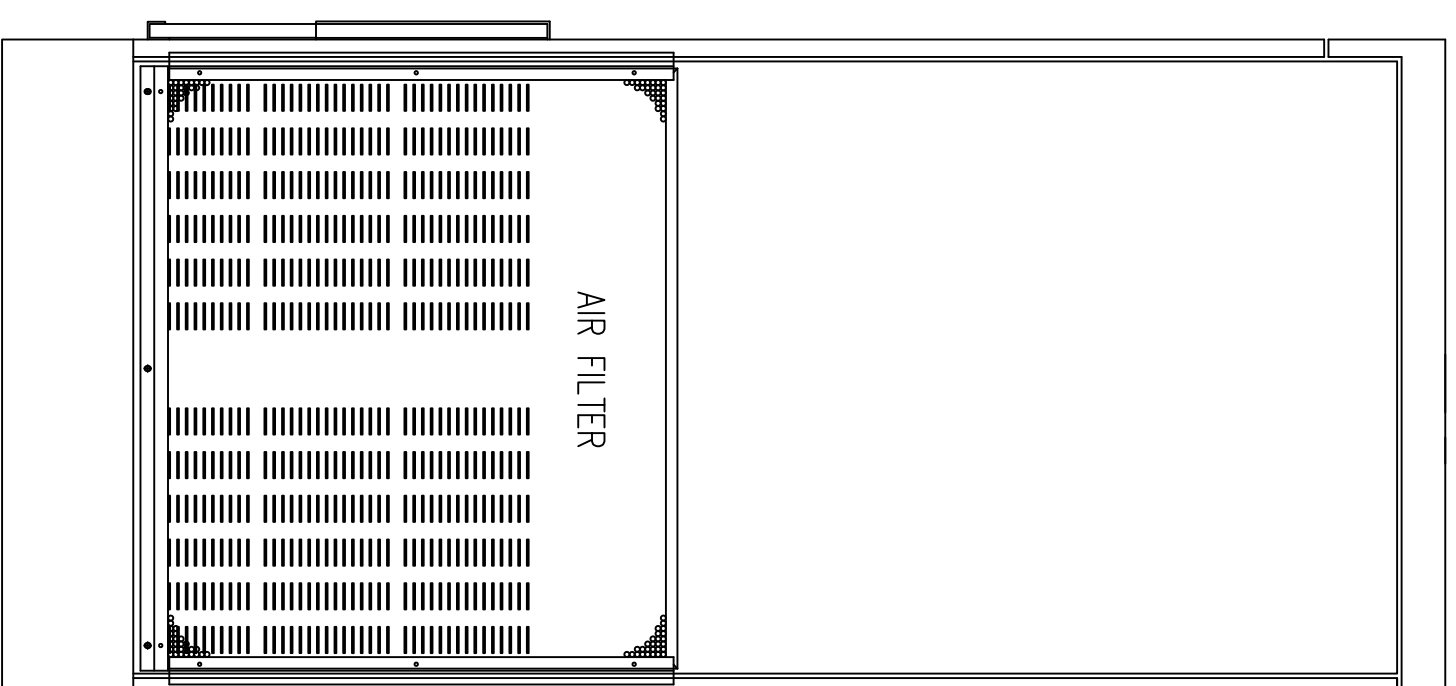
65.0
[1650]



LEFT



FRONT



RIGHT

Notes: Unless otherwise specified, dimensions are in inches. Dimensions within brackets [] are in millimeters.
Recommended clearance for serviceability is 36" [914] in the front and 6" [152] on the remaining sides.

TO REMOVE FRONT FILTER, REMOVE TOP SCREW FROM EACH SIDE BRACKET. ROTATE BRACKETS AWAY FROM FILTER, THEN SLIDE FILTER UP AND REPLACE AS NECESSARY.

LTI Power Systems, Inc.

ProUPS B800 ENCLOSURE
15KVA

15KVA WEIGHT W/SKID: 1360 LBS. (612 kg)

LTI-ProUPS

REV.
1

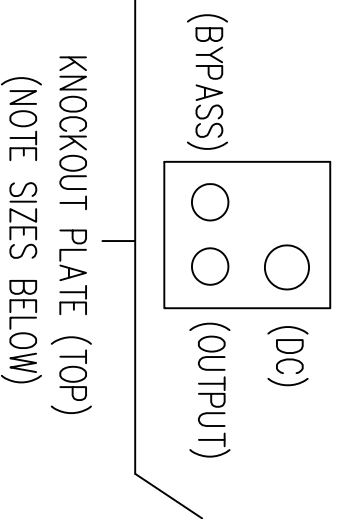
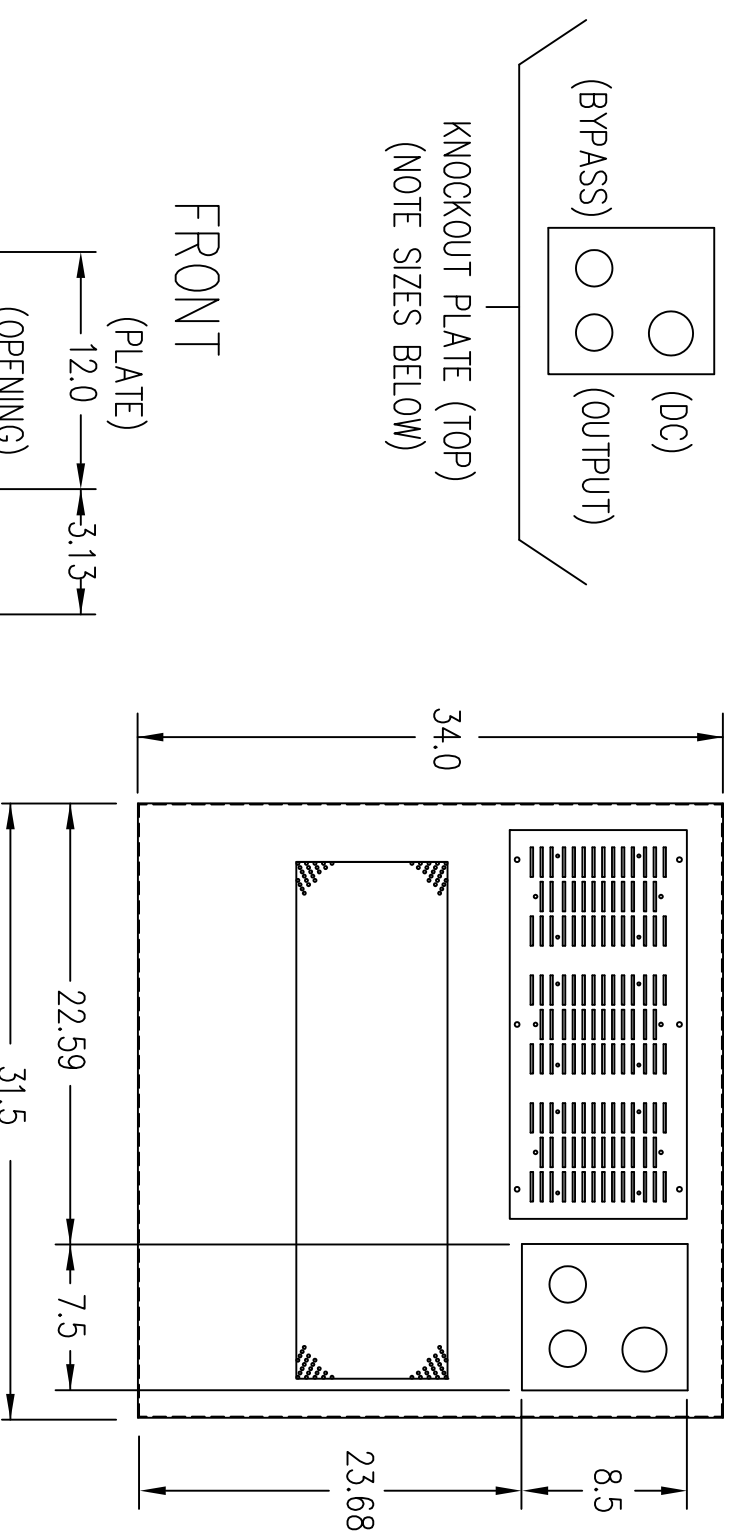
TEL. (440) 327-5050

10800 Middle Ave. Elyria, Ohio 44035

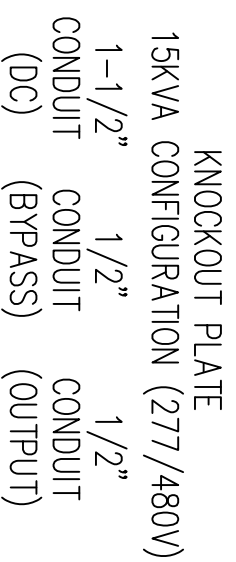
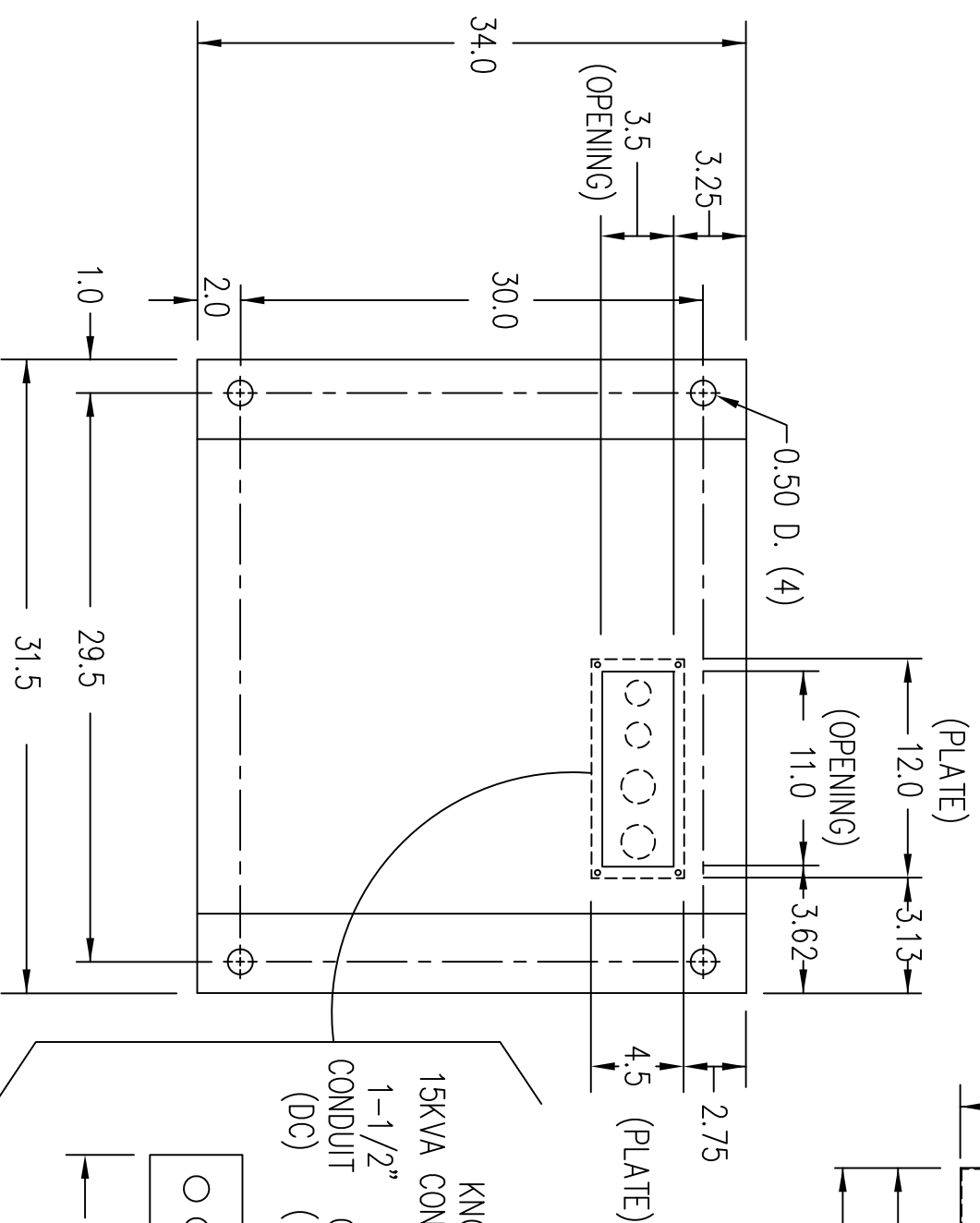
CAD DWG NAME: B800CAB_15H48D

(VIEW FROM TOP OF CABINET)

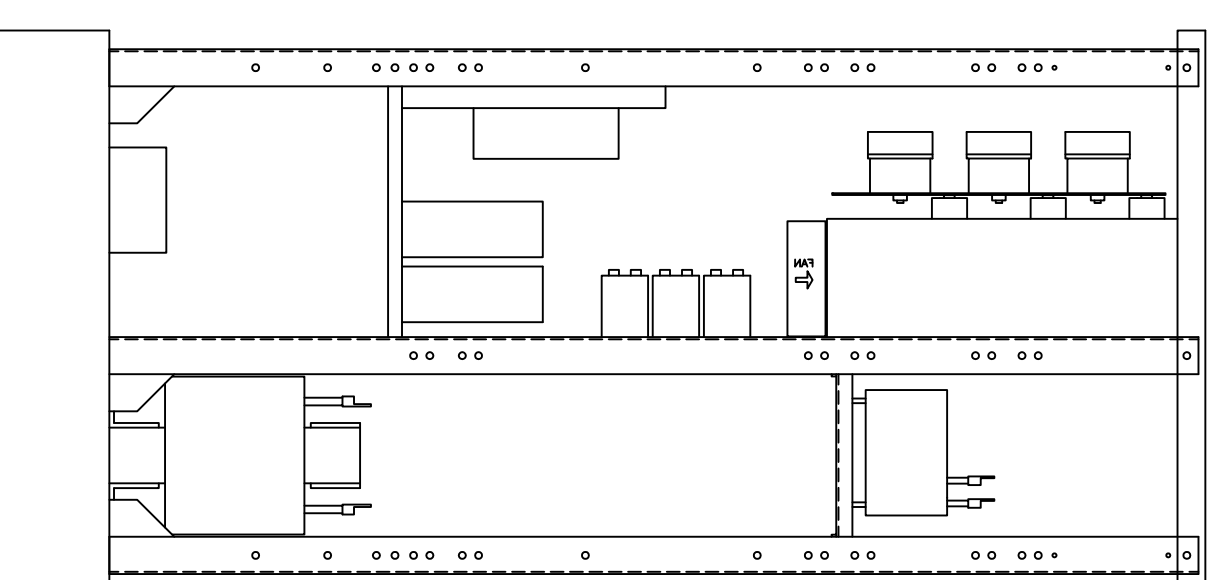
RIGHT SIDE



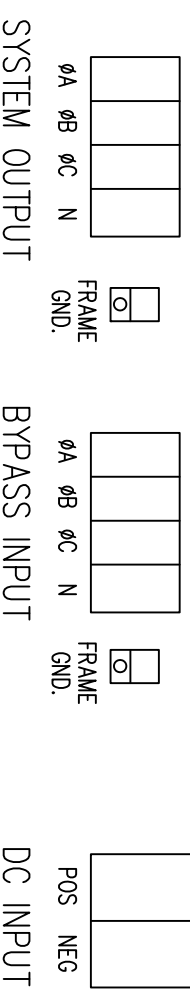
FRONT



(VIEW FROM BOTTOM OF CABINET)



TERMINATION CONFIGURATION (BOTTOM, FRONT)
 TERMINAL BLOCK CAPACITY: 2/0 TO 14 GA.
 TERMINAL BLOCK CAPACITY (DC INPUT): 350 MCM TO 6 GA.



NOTE: ALL DIMENSIONS ARE IN INCHES UNLESS OTHERWISE SPECIFIED.

LTI Power Systems, Inc.

15KVA ASSEMBLY

LTI-ProUPS

REV.

TEL. (440) 327-5050

10800 Middle Ave. Bldg. B Elyria, Ohio 44035

SHEET 1 OF 1

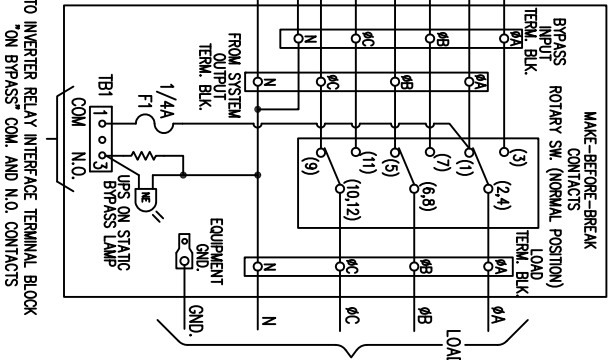
CAD DWG NAME: 15H48D BASE

1

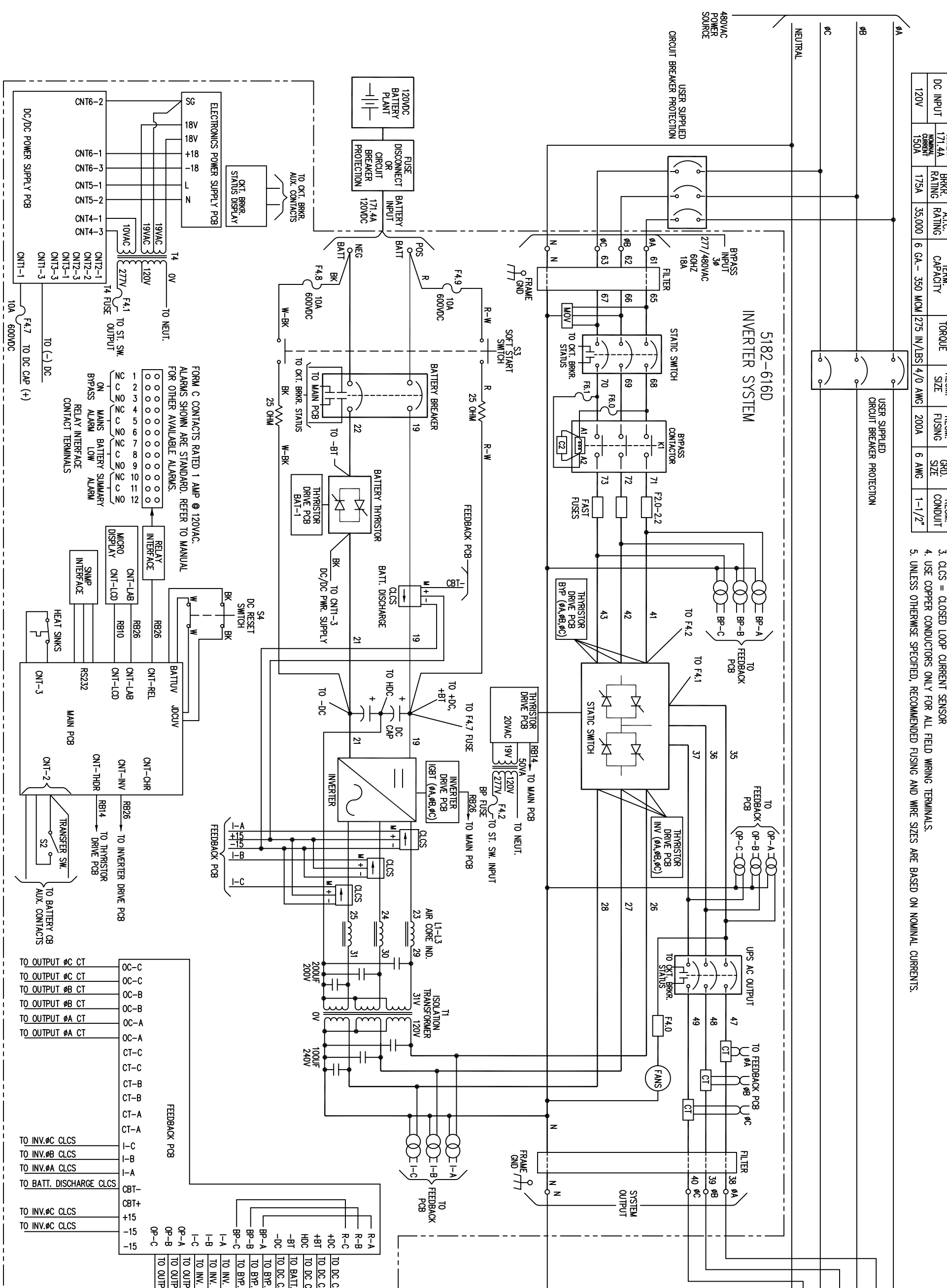
BYPASS INPUT/AC OUTPUT	NOMINAL CURRENT	DKT. BRKR. RATING	A.I.C. RATING	TERM. CAPACITY	TORQUE	RECM. SIZE	RECM. FUSING	RECM. GND. SIZE	RECM. CONDUIT
277/480V	18A	30A	25,000	14-2/0 AWG	50 IN./LBS	10 AWG	30A	10 AWG	1/2"
DC INPUT	MAX. CURRENT 171.4A NOMINAL CURRENT 130A	DKT. BRKR. RATING 175A	A.I.C. RATING 35,000	6 GA.-350 MCM	275 IN./LBS	4/0 AWG	200A	6 AWG	1-1/2"

- NOTES:
1. WIRE SIZES BASED ON 75°C COPPER CONDUCTORS OPERATING IN 40°C AMBIENT AND NEC TABLES 250-95 AND 310-16. INCREASE CONDUCTOR SIZE FOR LONG RUNS.
 2. CLOCKWISE PHASE ROTATION MUST BE OBSERVED FOR BYPASS INPUT.
 3. CLCS = CLOSED LOOP CURRENT SENSOR
 4. USE COPPER CONDUCTORS ONLY FOR ALL FIELD WIRING TERMINALS.
 5. UNLESS OTHERWISE SPECIFIED, RECOMMENDED FUSING AND WIRE SIZES ARE BASED ON NOMINAL CURRENTS.

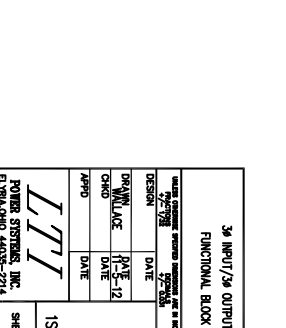
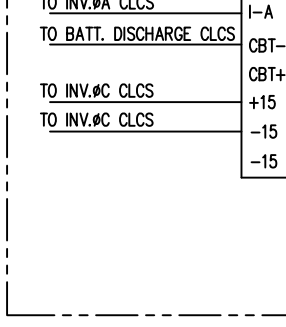
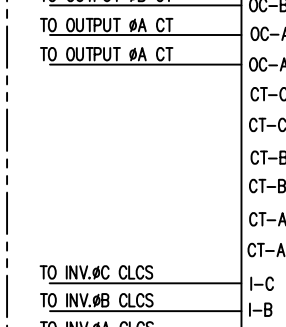
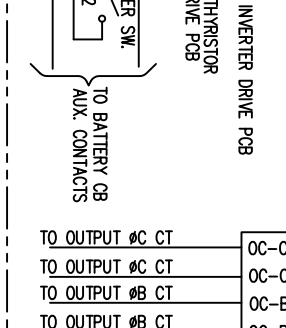
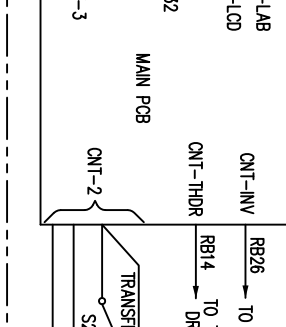
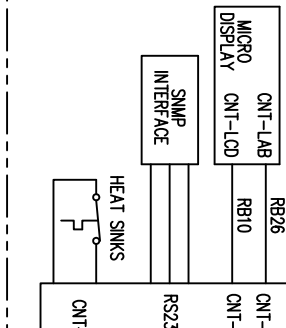
MANUAL BYPASS ENCLOSURE

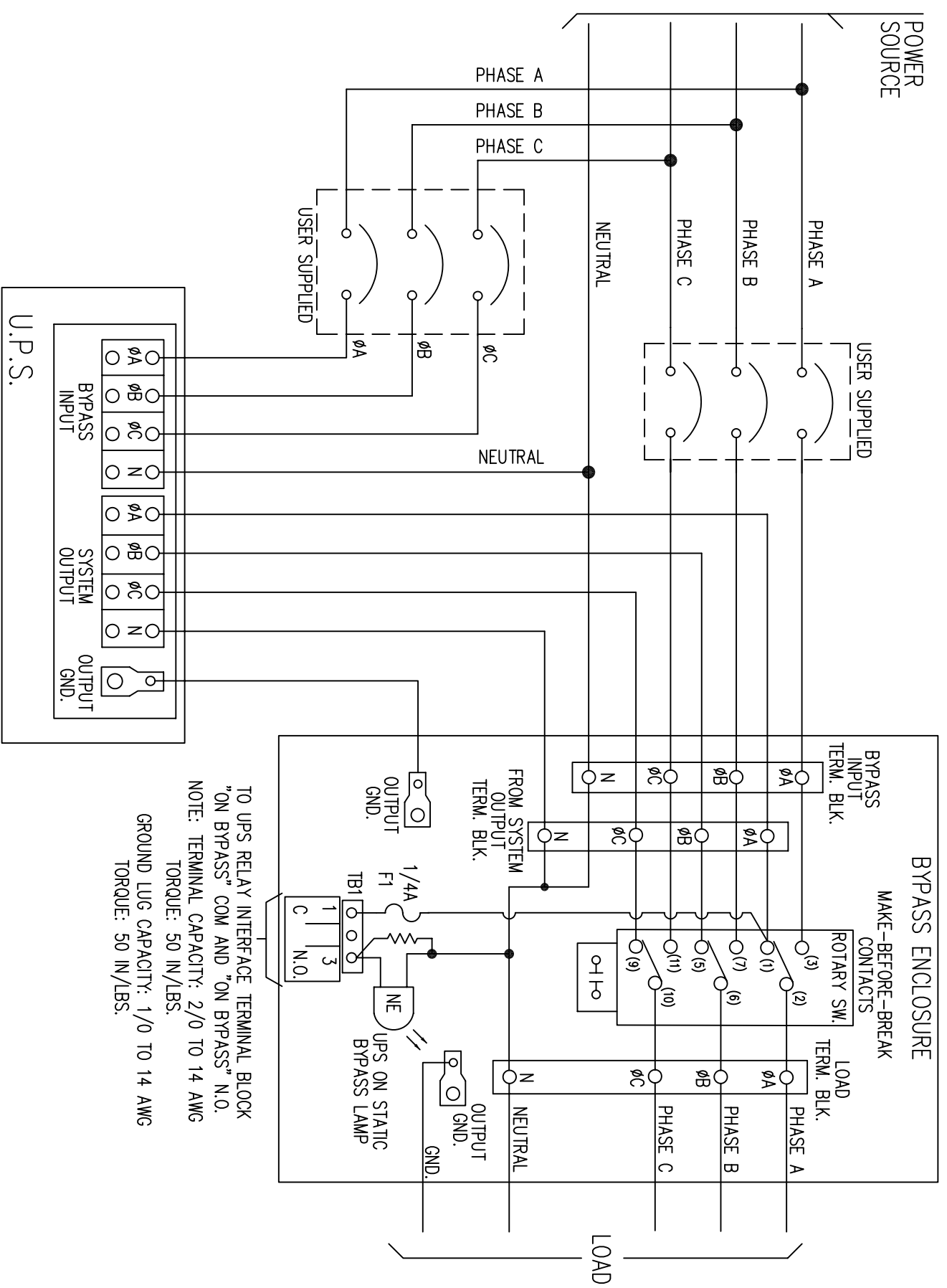
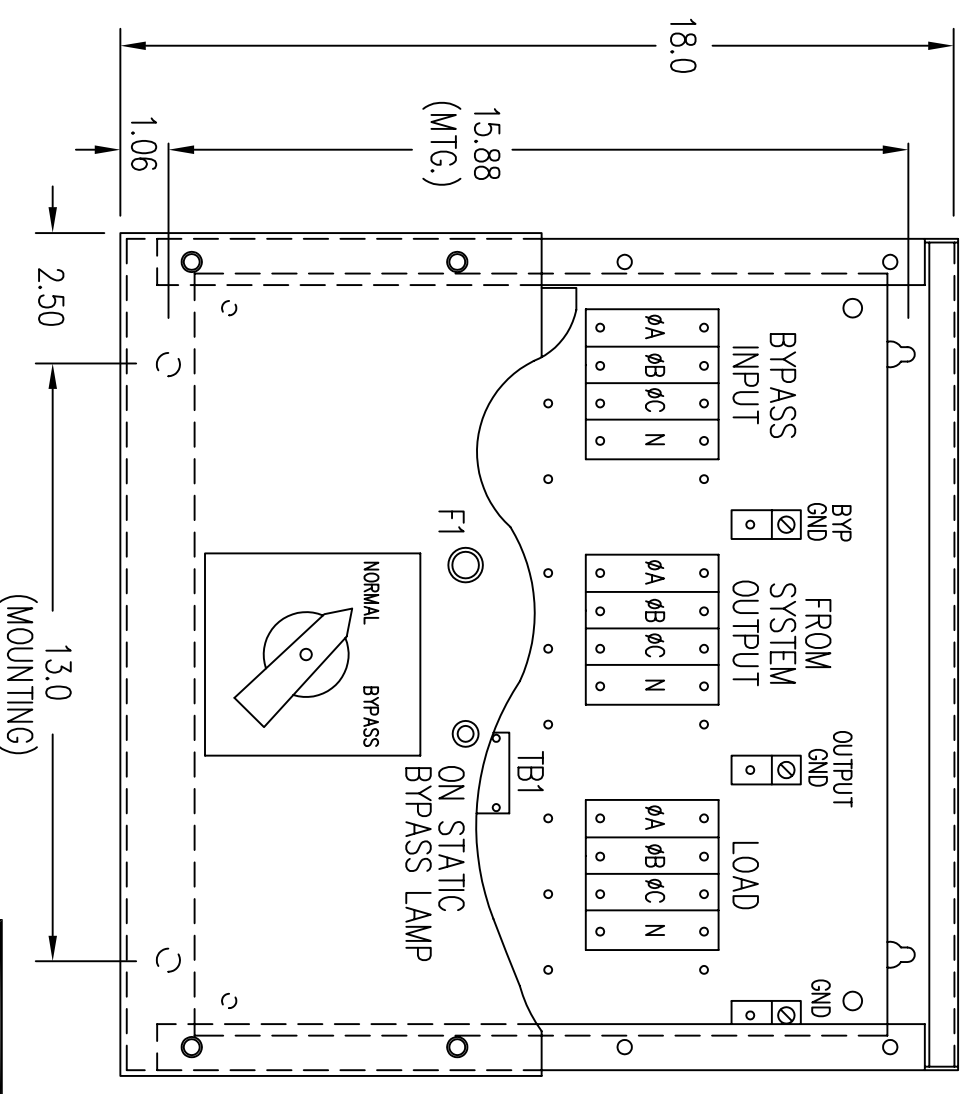
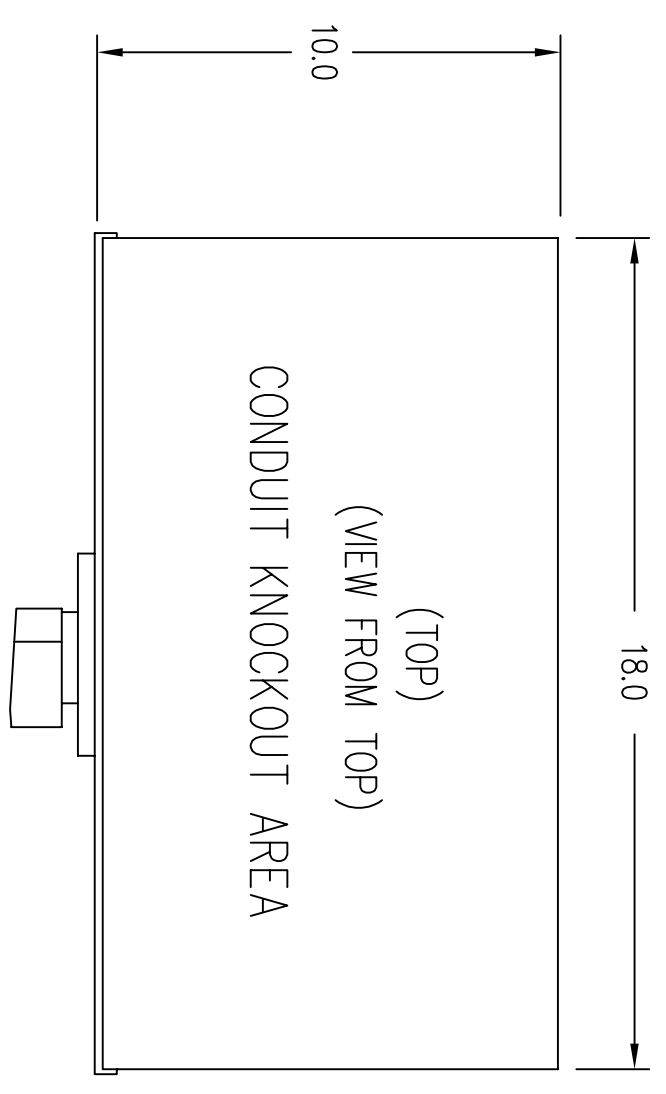


3#, 4 WIRE
277/480VAC
60HZ
15KVA/15KW
OUTPUT
18A



FORM C CONTACTS RATED 1 AMP @ 120VAC. ALARMS SHOWN ARE STANDARD. REFER TO MANUAL FOR OTHER AVAILABLE ALARMS.





TO UPS RELAY INTERFACE TERMINAL BLOCK
 "ON BYPASS" COM AND "ON BYPASS" N.O.
 NOTE: TERMINAL CAPACITY: 2/0 TO 14 AWG
 TORQUE: 50 IN./LBS.
 GROUND LUG CAPACITY: 1/0 TO 14 AWG
 TORQUE: 50 IN./LBS.

NOTES:

1. OBSERVE ALL PHASING WHEN CONNECTING EXTERNAL SWITCH CONTACTS.
2. EXTERNAL ROTARY SWITCH ENCLOSURE: NEMA TYPE 1, 18"L x 18"W x 10"D.
3. DO NOT OPERATE THE ROTARY SWITCH TO BYPASS POSITION WITH THE "UPS" DE-ENERGIZED.
4. NORMAL- THE UPS SUPPLYING THE LOAD.
 BYPASS- THE HARD BYPASS SOURCE SUPPLYING THE LOAD.
5. REMOVE BLANK COVER PANEL TO ACCESS TERMINAL CONNECTIONS.

MOUNTING HOLES LOCATED ON BOTTOM
 SURFACE OF ENCLOSURE AND ARE DESIGNED
 FOR 5/16 HARDWARE.

BYPASS ENCLOSURE
 (FRONT-VIEW FROM FRONT)
 (BLANK COVER PANEL REMOVED)

50A THREE PHASE OUTPUT PROPS SERIES EXTERNAL MAINTENANCE BYPASS SWITCH			
DESIGN	DATE	ISSUE	
DRAWN	DATE		
CHKD	DATE		
APPD	DATE		
REVISIONS	DATE	BY	REASON
	1-5-11		
	1-5-11		
SHEET 1 OF 1		ISSUE 2	