

65.0
[1650]

Notes: Unless otherwise specified, dimensions are in inches. Dimensions within brackets [] are in millimeters.
Recommended clearance for serviceability is 36" [914] in the front and 6" [152] on the remaining sides.

LTI Power Systems, Inc.

TEL. (440) 327-5050

10800 Middle Ave. Elyria, Ohio 44035

ProUPS B1250 ENCLOSURE
20KVA

20KVA WEIGHT W/SKID: 1630 LBS. (734 kg)

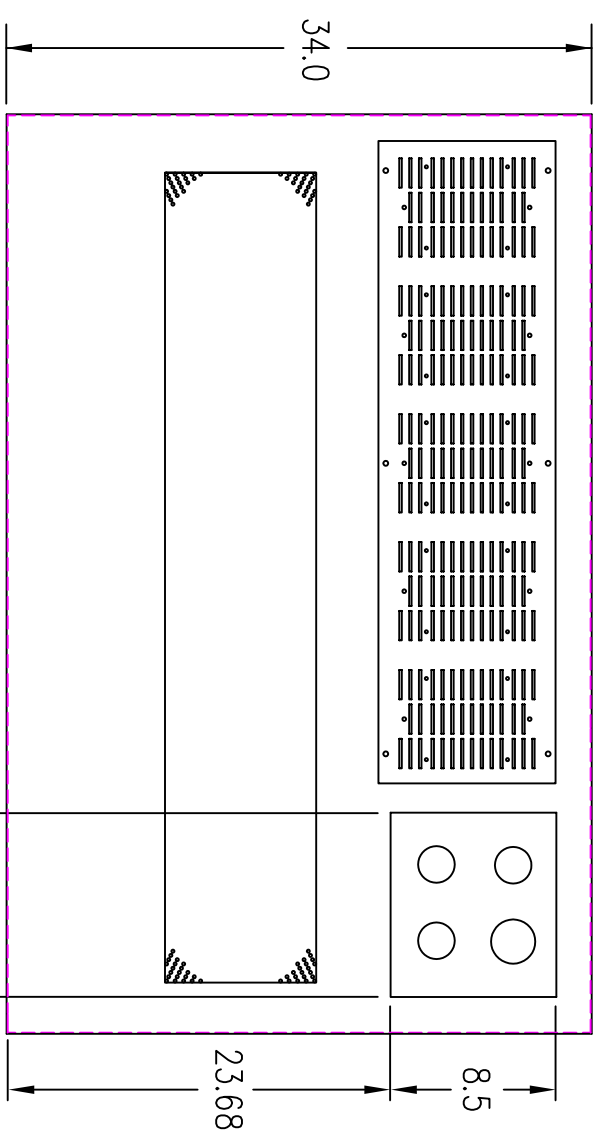
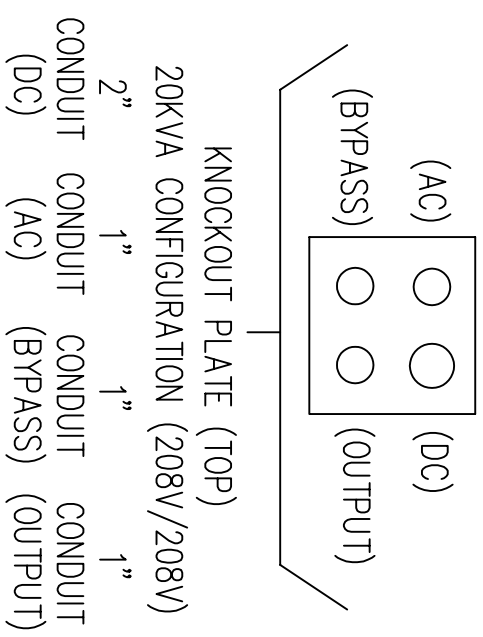
LTI-ProUPS

CAD DWG NAME: B1250CAB_204812HD_521D

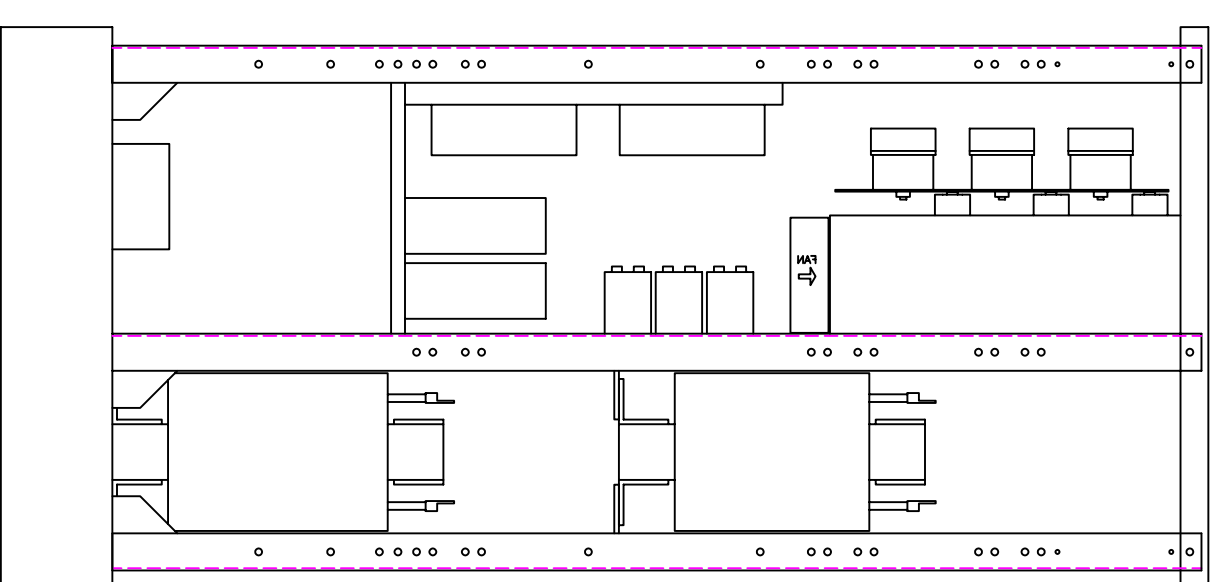
REV.

1

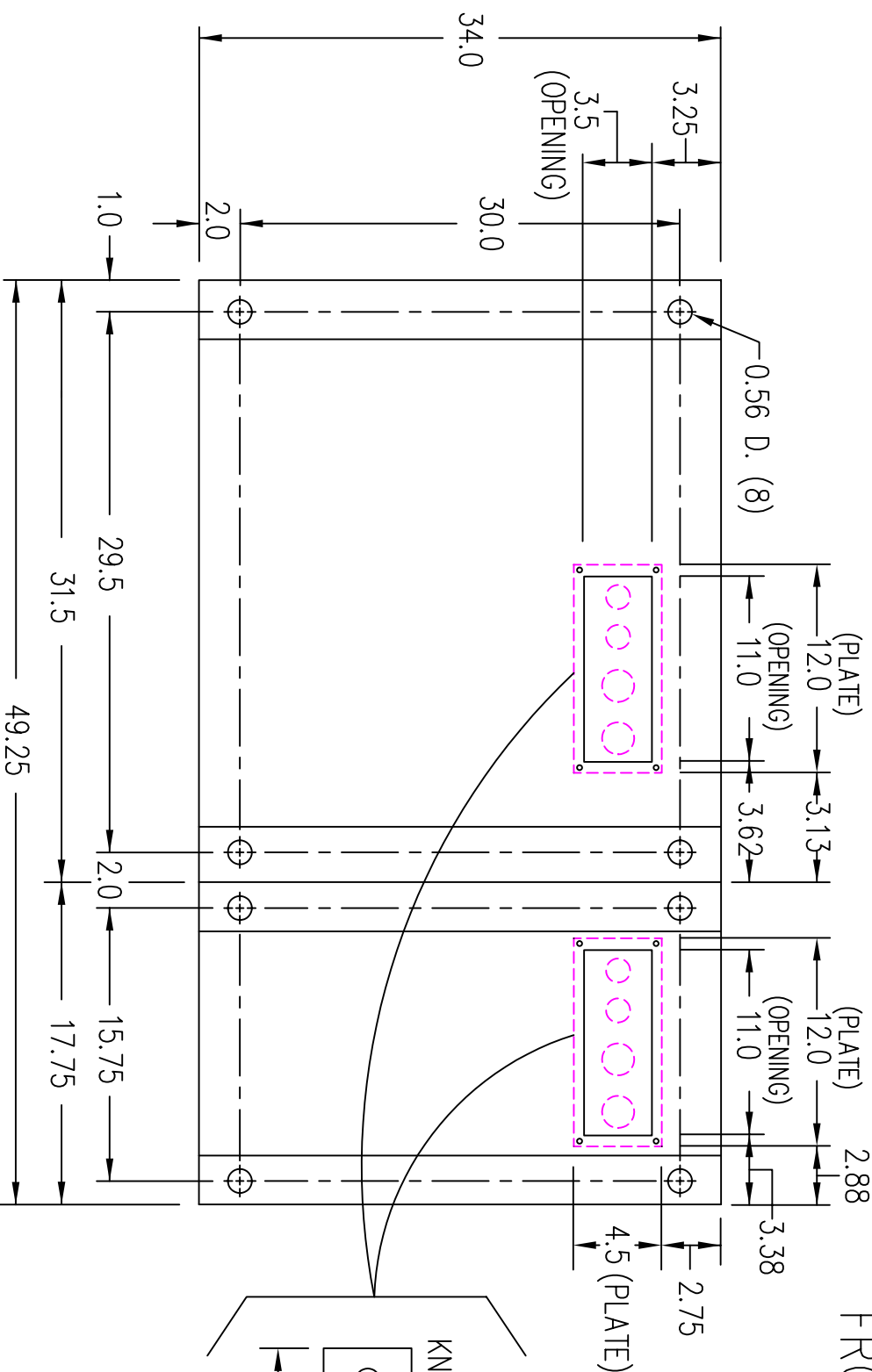
(VIEW FROM TOP OF CABINET)



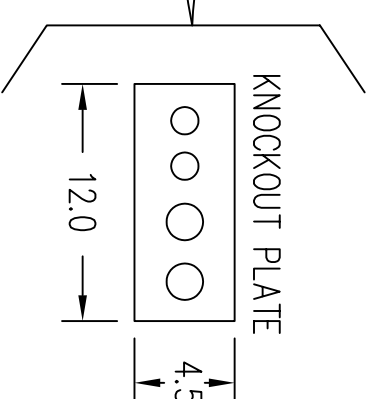
RIGHT SIDE



FRONT

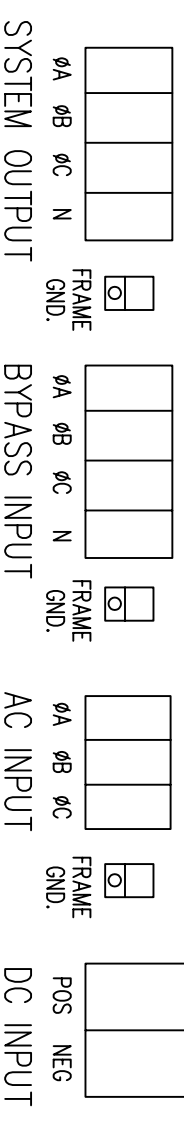


FRONT



TERMINATION CONFIGURATION (BOTTOM, FRONT)

TERMINAL BLOCK CAPACITY: 2/0 TO 14 GA.
 TERMINAL BLOCK CAPACITY (BYPASS INPUT/AC OUTPUT): 2/0 TO 14 GA.
 TERMINAL BLOCK CAPACITY (DC INPUT): 500 MCM TO 4 GA.
 GROUND LUG CAPACITY: 14 GA. TO 1/0 GA.



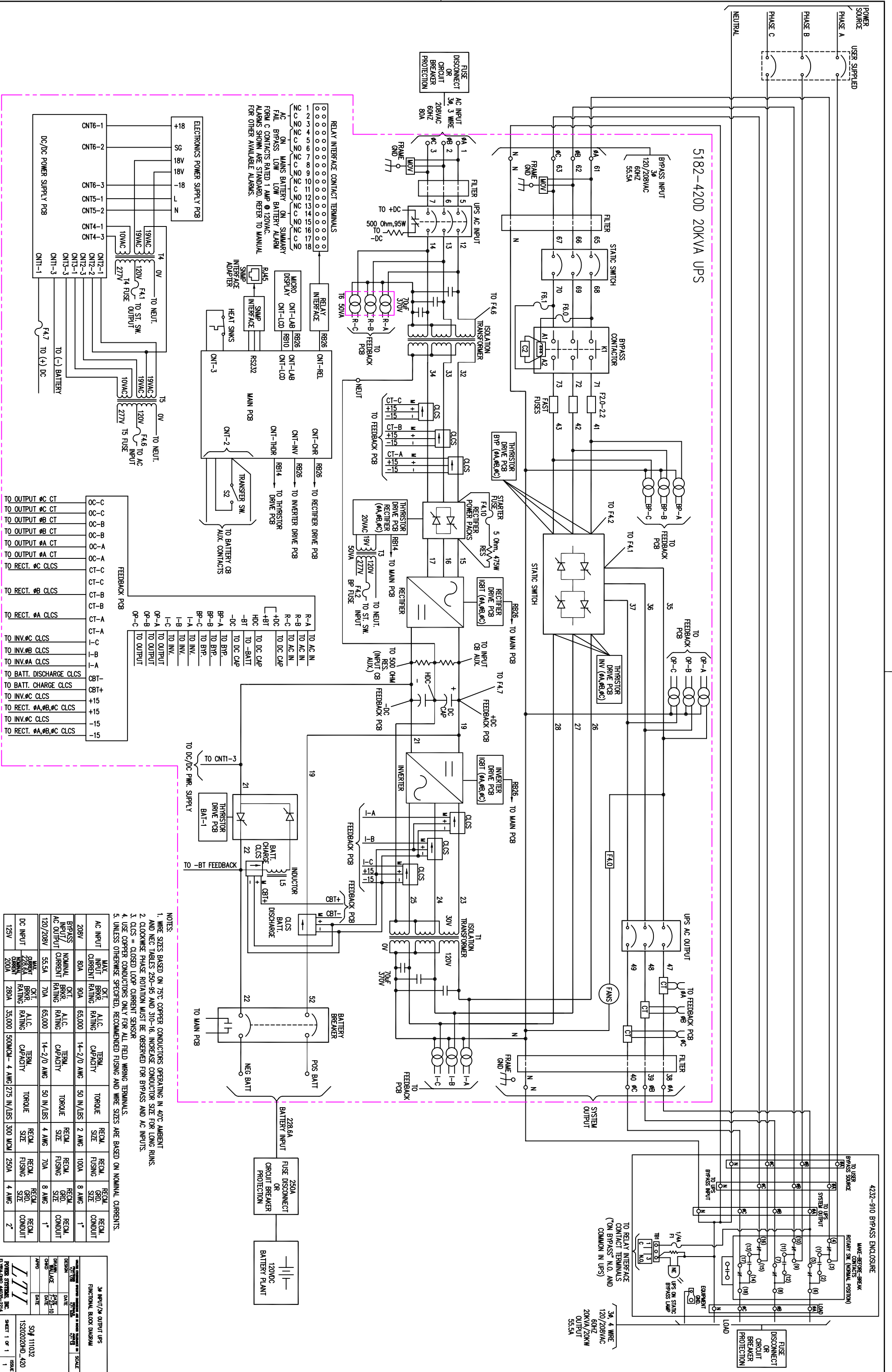
NOTE: ALL DIMENSIONS ARE IN INCHES UNLESS OTHERWISE SPECIFIED.

(VIEW FROM BOTTOM OF CABINET)

LTI Power Systems, Inc.

20KVA ASSEMBLY

LTI-ProUPS



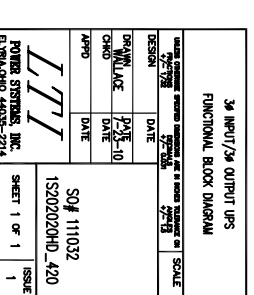
NOTES:

1. WIRE SIZES BASED ON 75°C COPPER CONDUCTORS OPERATING IN 40°C AMBIENT AND NEC TABLES 250-95 AND 310-16. INCREASE CONDUCTOR SIZE FOR LONG RUNS.
2. CLOCKWISE PHASE ROTATION MUST BE OBSERVED FOR BYPASS AND AC INPUTS.
3. CLCS = CLOSED LOOP CURRENT SENSOR
4. USE COPPER CONDUCTORS ONLY FOR ALL FIELD WIRING TERMINALS
5. UNLESS OTHERWISE SPECIFIED, RECOMMENDED FUSING AND WIRE SIZES ARE BASED ON NOMINAL CURRENTS.

AC INPUT	MAX. INPUT CURRENT	O.K.T. BRKR. RATING	A.I.C. RATING	TERM. CAPACITY	TORQUE	RECM. SIZE	RECM. FUSING	RECM. GND. CONDUIT
208V	80A	90A	65,000	14-2/0 AWG	50 IN./LBS	2 AWG	100A	8 AWG
120/208V	55.5A	70A	65,000	14-2/0 AWG	50 IN./LBS	4 AWG	70A	8 AWG
DC INPUT	228.6A	280A	35,000	50MMCH-4 AWG	275 IN./LBS	300 MCM	250A	4 AWG

DESCRIPTION	DATE	SCALE
DESIGN	12/15/00	1" = 1"
DRAWING	12/15/00	
CHKD	12/15/00	
APPD	12/15/00	

POWER SYSTEMS, INC.
15202020HD-420
SHEET 1 OF 1



4232-910 BYPASS ENCLOSURE

WAVE-BREAKING BREAKER (ROTARY SW. (MANUAL POSITION))

TO UPS BYPASS INPUT

TO UPS BYPASS OUTPUT

TO UPS ON STATIC BYPASS INPUT

TO RELAY INTERFACES CONTACT TERMINALS ("ON BYPASS" N.O. AND COMMON IN UPS)

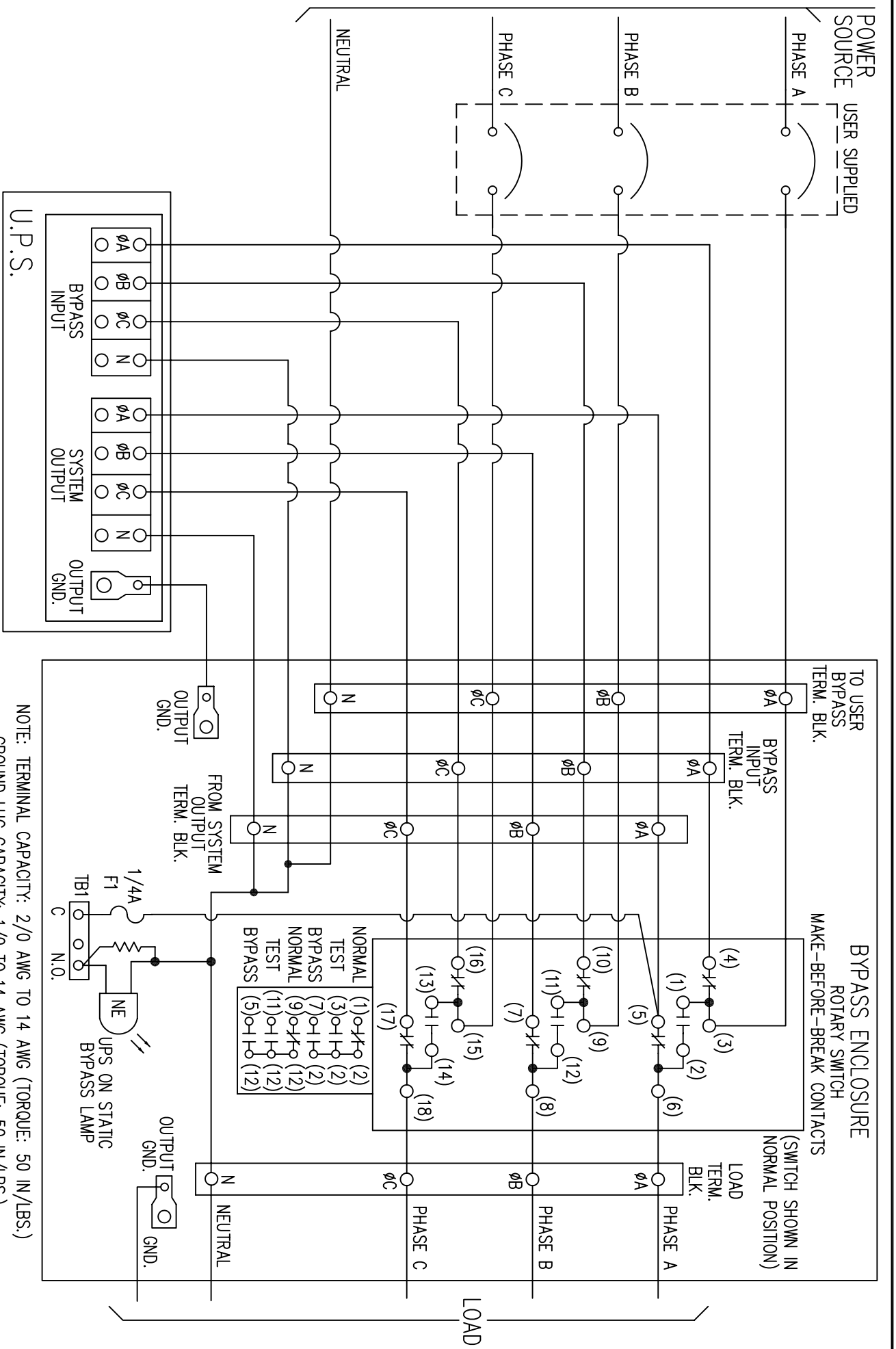
1/4" F1 UPS ON STATIC BYPASS INPUT

EQUIPMENT GND

LOAD

DISCONNECT OR CIRCUIT BREAKER PROTECTION

36, 4 WIRE 120/208VAC 60HZ 20KVA/20KW OUTPUT 55.5A

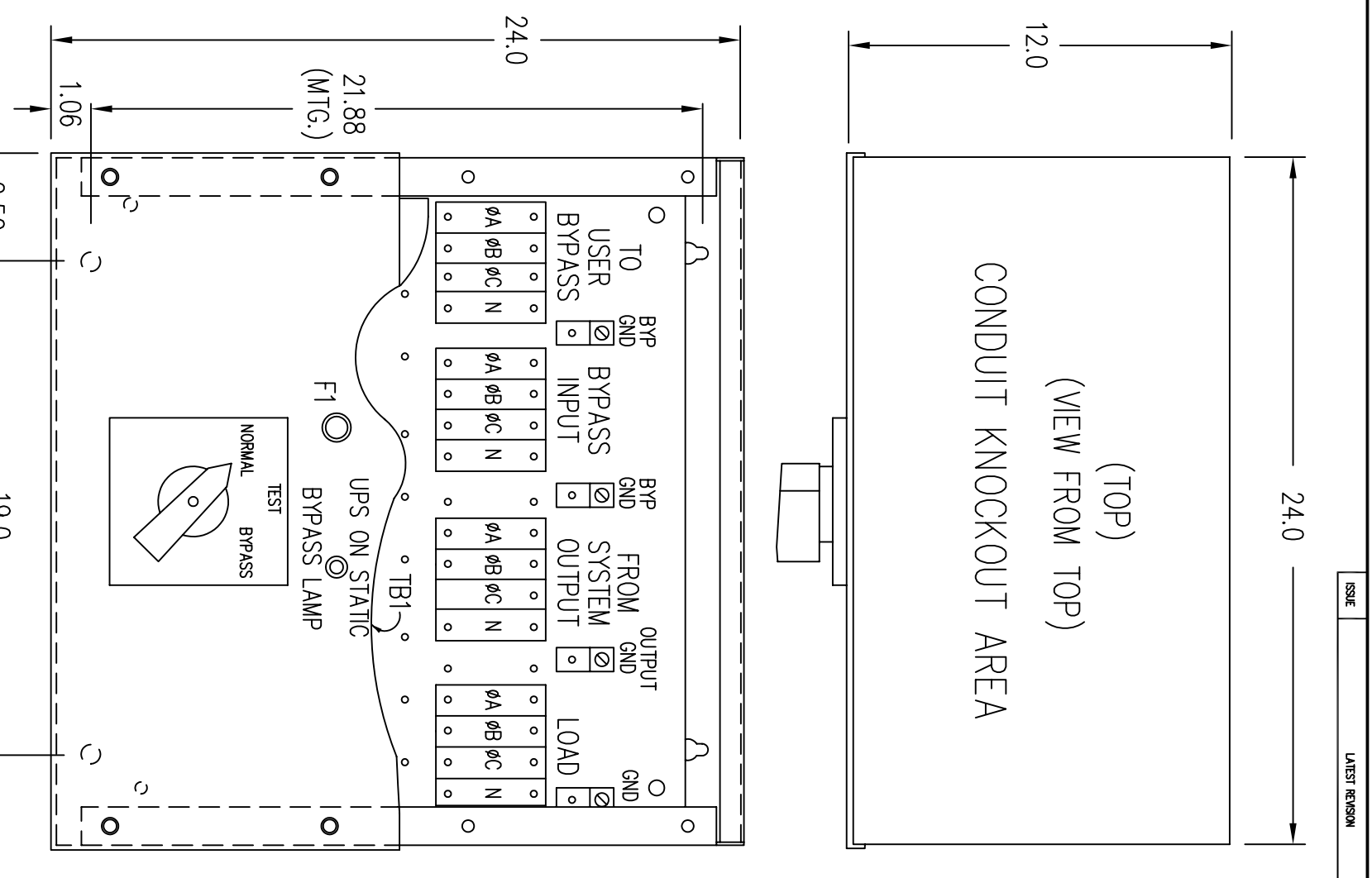


3 POSITION ROTARY SWITCH POWER CONTACTS

POSITION	1-2, 11-12, 13-14	3-4, 9-10, 15-16	5-6, 7-8, 17-18
NORMAL	OPEN	CLOSED	CLOSED
TEST	CLOSED	CLOSED	OPEN
BYPASS	CLOSED	OPEN	OPEN

3 POSITION ROTARY SWITCH AUX. CONTACTS
(AUX. CONTACTS 4-8 AND 6-10 JUMPERED)

POSITION	1-2	2-3	2-7	9-12	11-12	5-12
NORMAL	CLOSED	OPEN	OPEN	CLOSED	OPEN	OPEN
TEST	OPEN	CLOSED	OPEN	OPEN	CLOSED	OPEN
BYPASS	OPEN	OPEN	CLOSED	OPEN	OPEN	CLOSED



- NOTES:**
- OBSERVE ALL PHASING WHEN CONNECTING EXTERNAL SWITCH CONTACTS.
 - EXTERNAL ROTARY SWITCH ENCLOSURE: NEMA TYPE 1, 24"L x 24"W x 12"D.
 - DO NOT OPERATE THE ROTARY SWITCH FROM "NORMAL" TO "TEST" OR FROM "TEST" TO "NORMAL" WITHOUT THE "UPS ON STATIC BYPASS" LAMP ON.
 - NORMAL - THE UPS SUPPLYING THE LOAD.
TEST - THE HARD BYPASS SOURCE SUPPLYING THE LOAD (BYPASS SOURCE STILL CONNECTED TO UPS BYPASS INPUT).
BYPASS - THE HARD BYPASS SOURCE SUPPLYING THE LOAD (BYPASS SOURCE NOT CONNECTED TO UPS BYPASS INPUT).
 - REMOVE BLANK COVER PANEL TO ACCESS TERMINAL CONNECTIONS.

100A THREE PHASE OUTPUT		DESIGN	DATE	IC4232-910	SHEET 1 of 1	ISSUE 1
EXTERNAL MAINTENANCE 3 POSITION BYPASS SWITCH (NORMAL-TEST-BYPASS)		DRAWN	DATE			
		CHKD	DATE			
		APP'D	DATE			