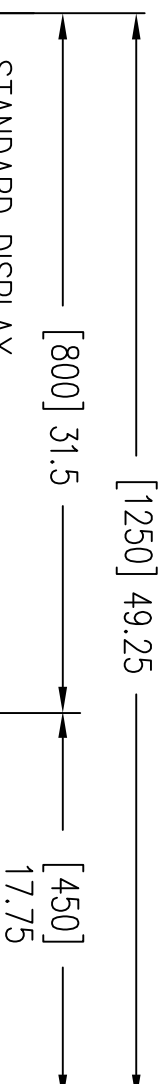
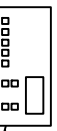


FRONT  
ACCESSIBLE  
AIR FILTER



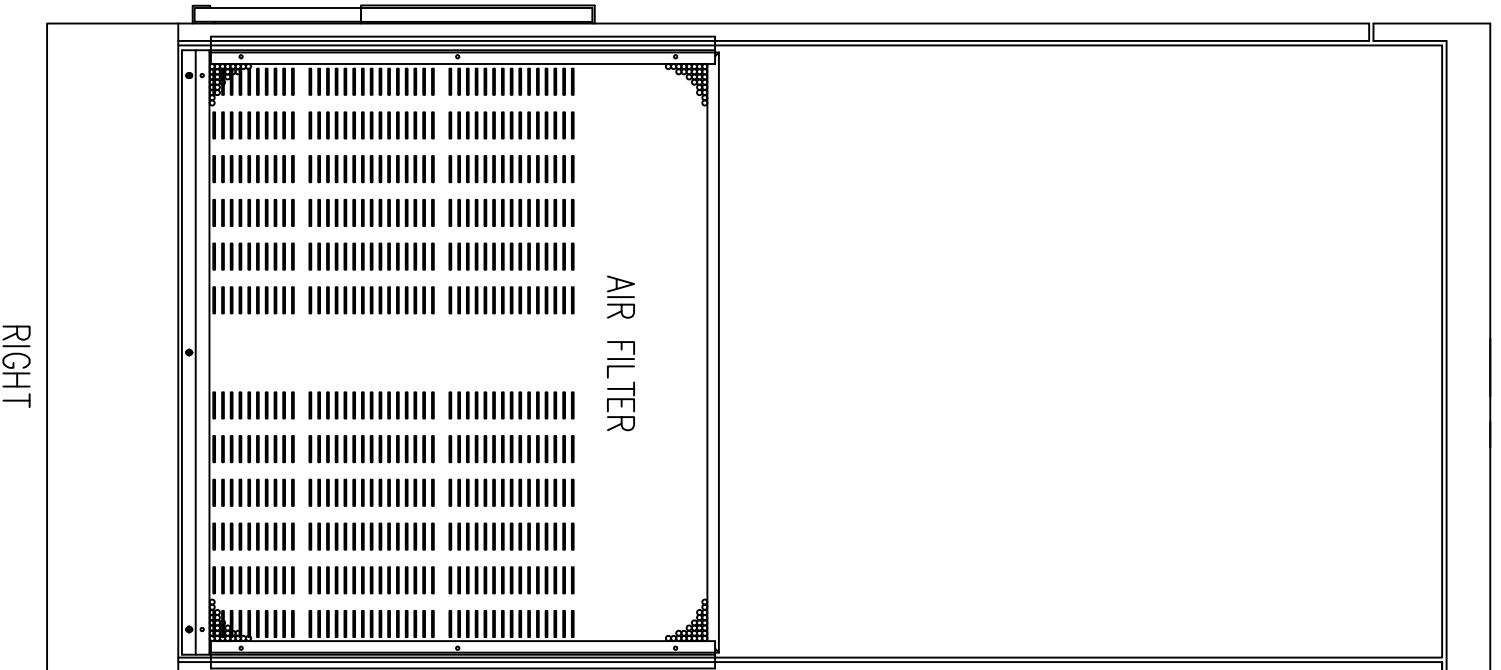
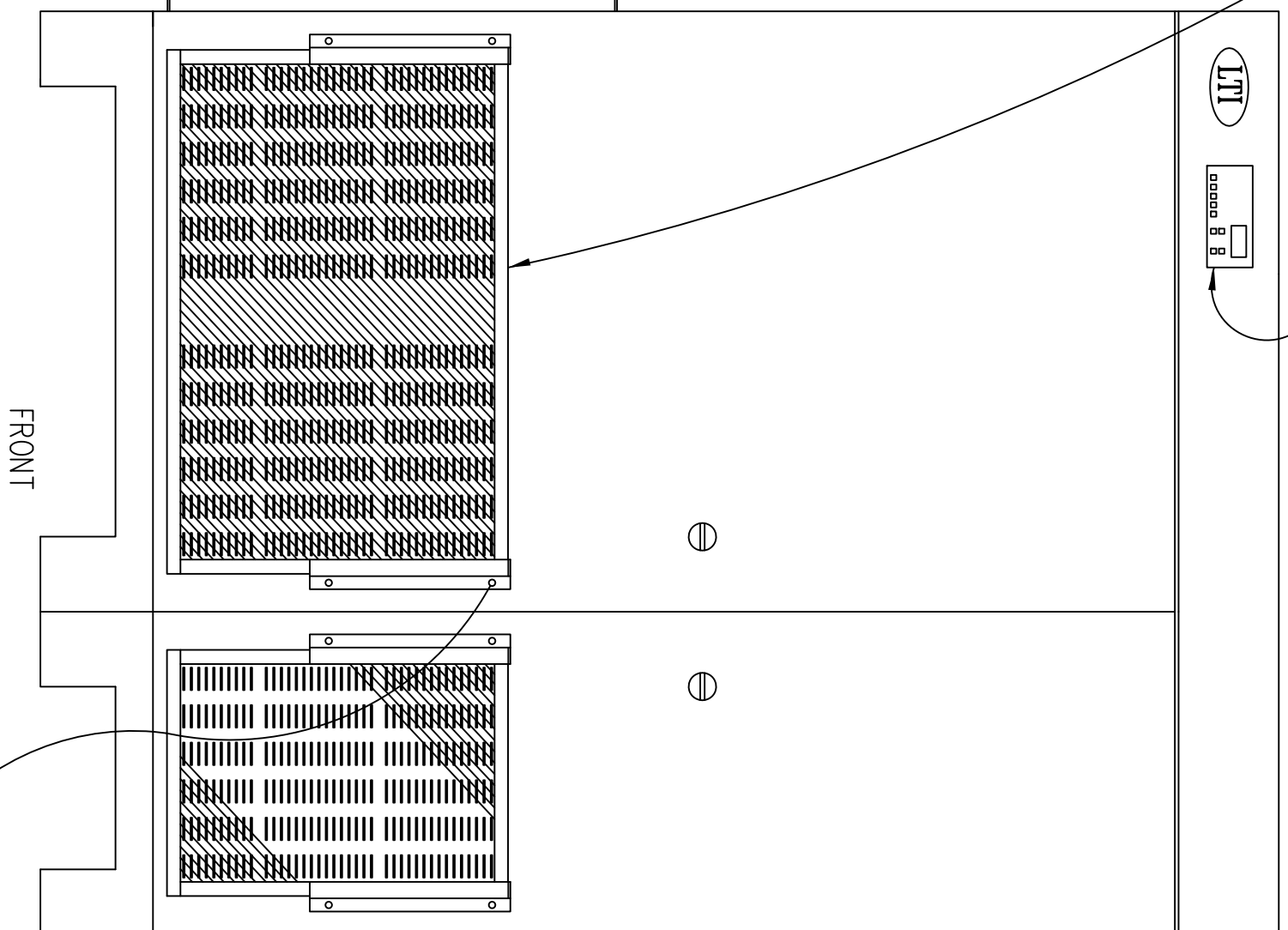
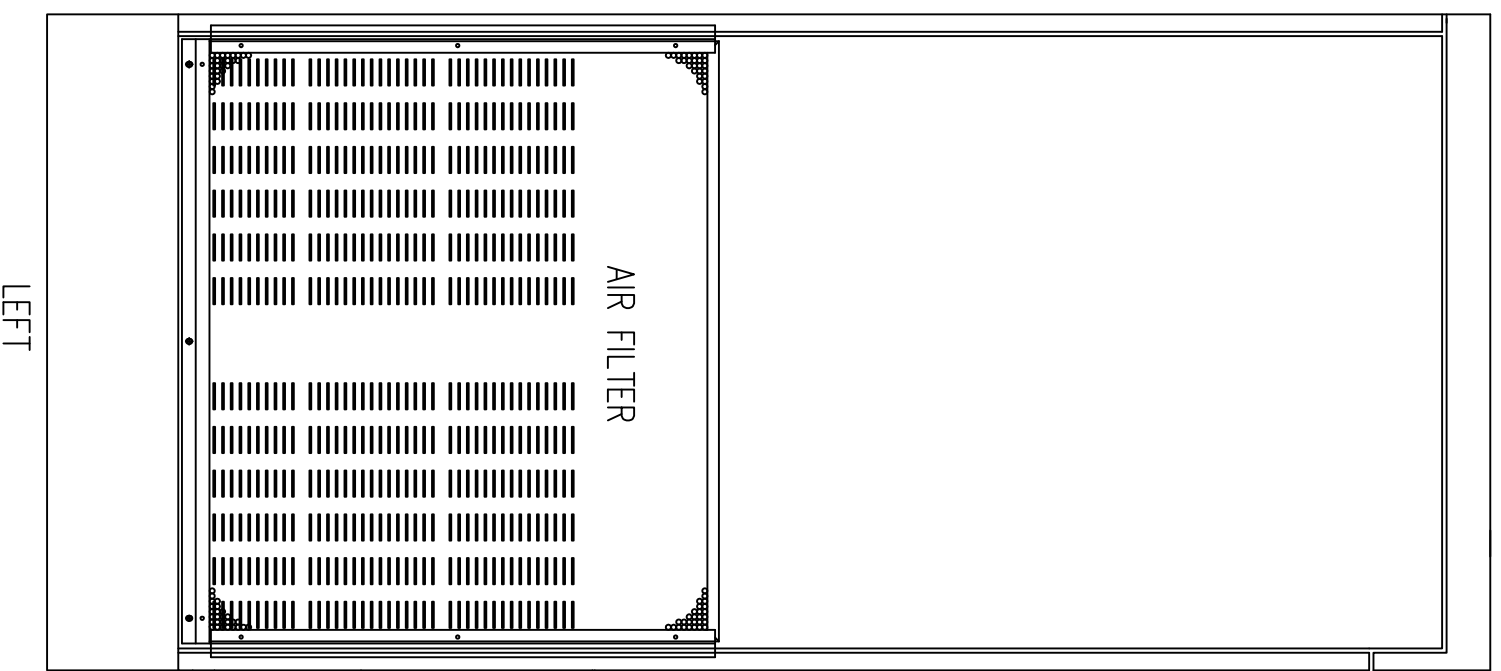
[864]  
34.0

STANDARD DISPLAY



[450]  
17.75

65.0  
[1650]



Notes: Unless otherwise specified, dimensions are in inches. Dimensions within brackets [ ] are in millimeters.  
Recommended clearance for serviceability is 36" [914] in the front and 6" [152] on the remaining sides.

TO REMOVE FRONT FILTER, REMOVE TOP SCREW FROM EACH SIDE BRACKET. ROTATE BRACKETS AWAY FROM FILTER, THEN SLIDE FILTER UP AND REPLACE AS NECESSARY.

**LTI Power Systems, Inc.**

ProUPS B1250 ENCLOSURE  
20KVA

20KVA WEIGHT W/SKID: 1630 LBS. (734 kg)

LTI-ProUPS

REV.

1

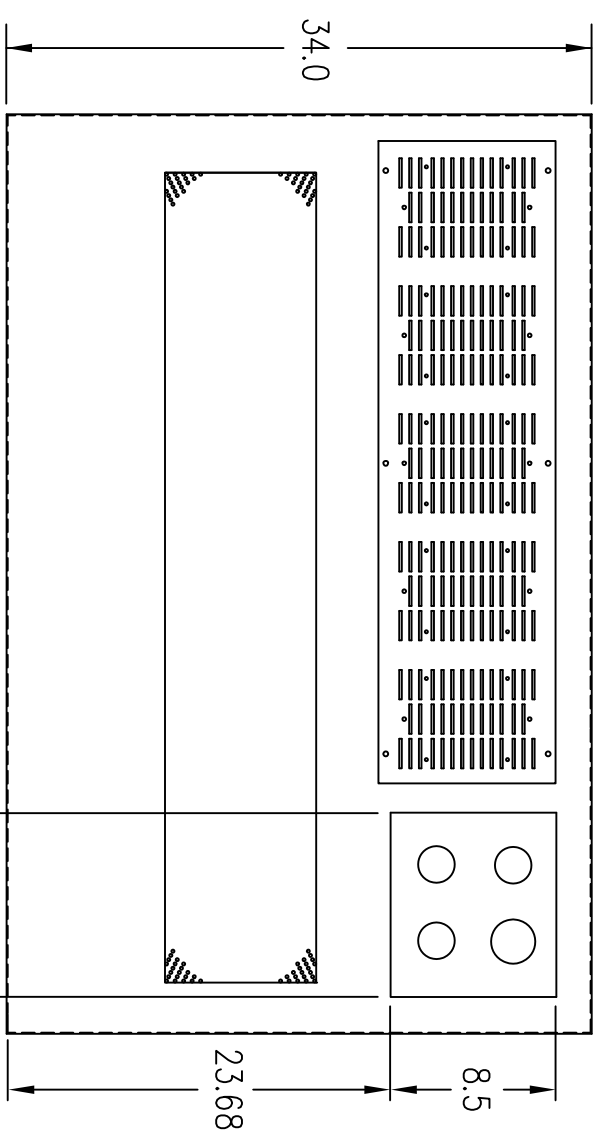
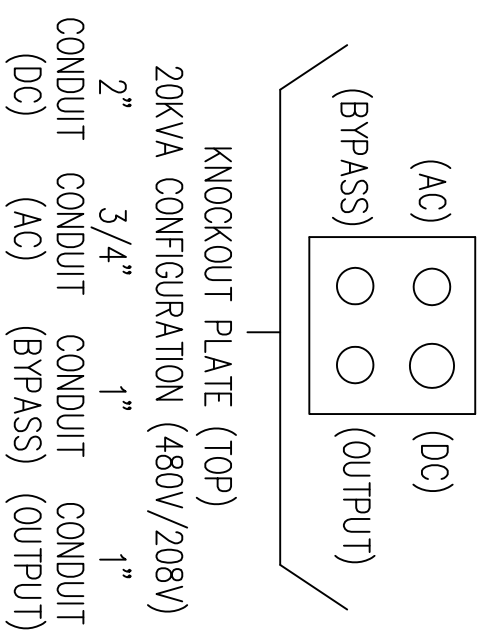
TEL. (440) 327-5050

10800 Middle Ave. Elyria, Ohio 44035

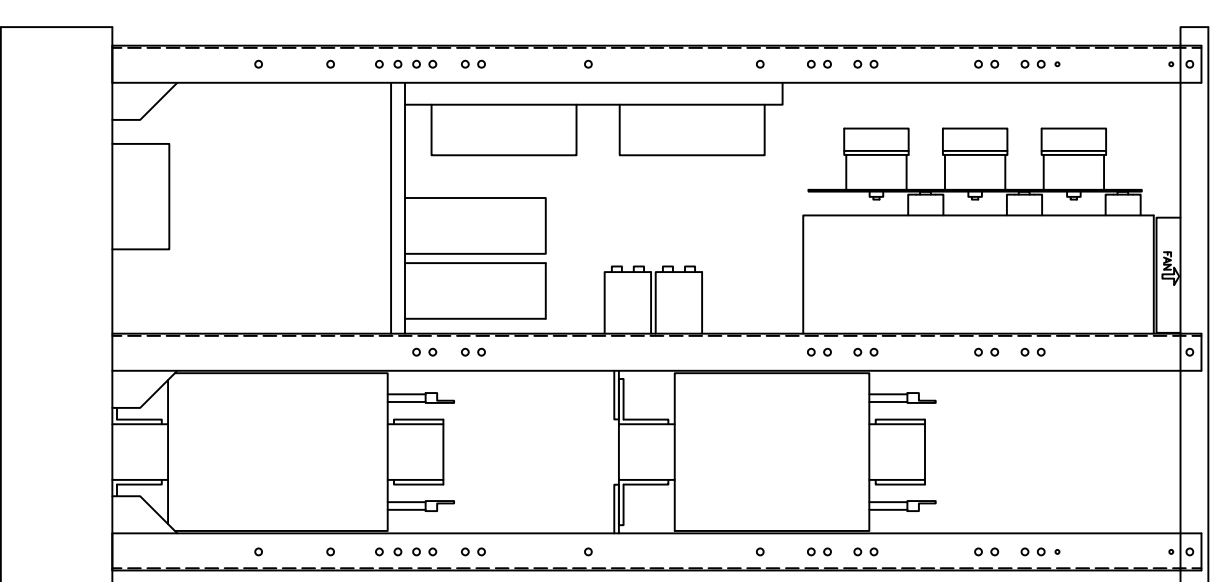
CAD DWG NAME: B1250CAB\_204820HD\_421D



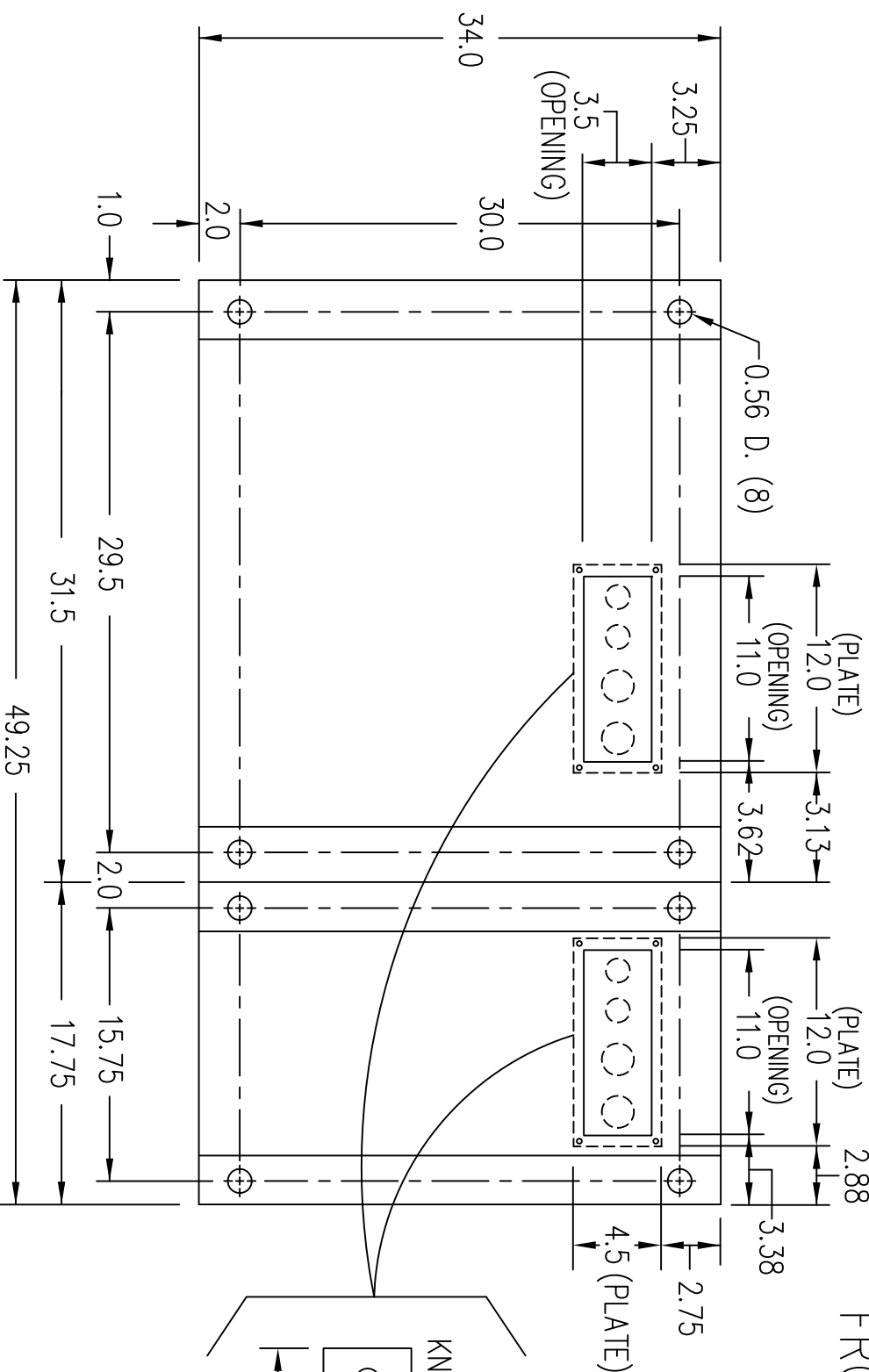
(VIEW FROM TOP OF CABINET)



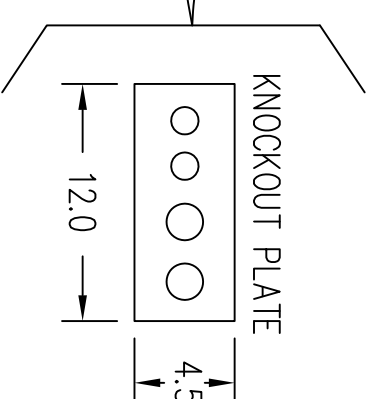
RIGHT SIDE



FRONT

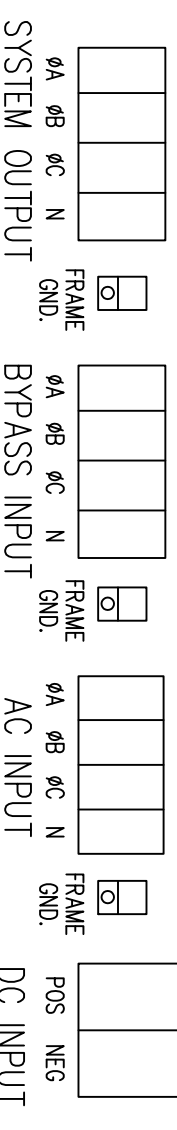


FRONT



TERMINATION CONFIGURATION (BOTTOM, FRONT)

TERMINAL BLOCK CAPACITY: 2/0 TO 14 GA.  
 TERMINAL BLOCK CAPACITY (BYPASS INPUT/AC OUTPUT): 2/0 TO 14 GA.  
 TERMINAL BLOCK CAPACITY (DC INPUT): 500 MCM TO 4 GA.  
 GROUND LUG CAPACITY: 14 GA. TO 1/0 GA.



NOTE: ALL DIMENSIONS ARE IN INCHES UNLESS OTHERWISE SPECIFIED.

(VIEW FROM BOTTOM OF CABINET)

**LTI Power Systems, Inc.**

20KVA ASSEMBLY

LTI-ProUPS



