

Notes: Unless otherwise specified, dimensions are in inches. Dimensions within brackets [] are in millimeters.
 Recommended clearance for serviceability is 36" [914] in the front and 6" [152] on the remaining sides.

TO REMOVE FRONT FILTER, REMOVE TOP SCREW FROM EACH SIDE BRACKET. ROTATE BRACKETS AWAY FROM FILTER, THEN SLIDE FILTER UP AND REPLACE AS NECESSARY.

LTI Power Systems, Inc.

ProUPS B800 ENCLOSURE
 15KVA

20KVA WEIGHT w/SKD: 1400 LBS. (635 kg)

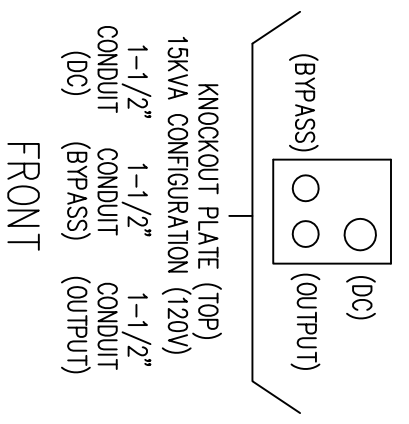
LTI-ProUPS

TEL. (440) 327-5050

10800 Middle Ave. Elyria, Ohio 44035

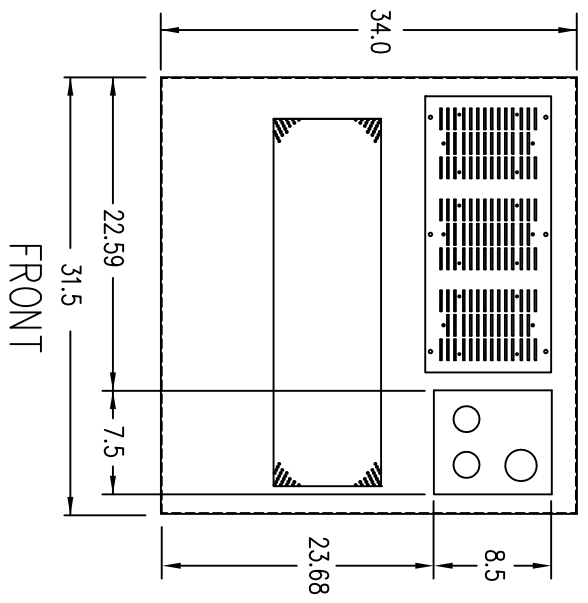
CAD DWG NAME: B800CAB_20H12D.DWG

REV. 1



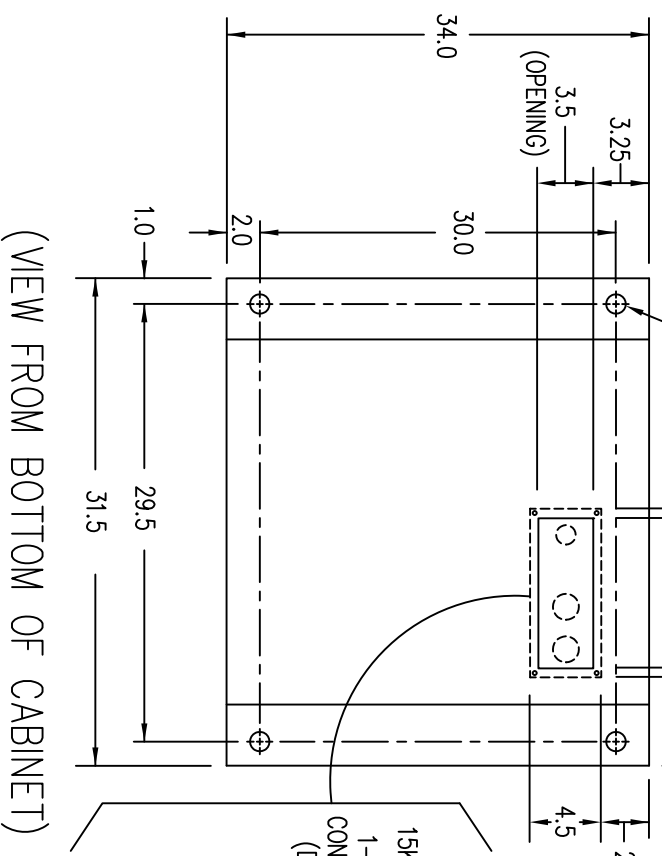
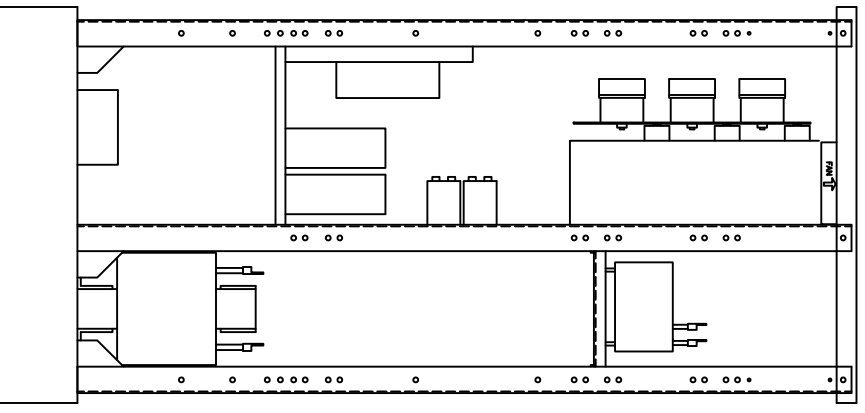
FRONT

(VIEW FROM TOP OF CABINET)

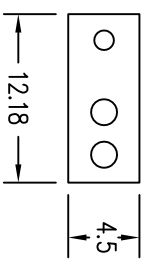


FRONT

RIGHT SIDE

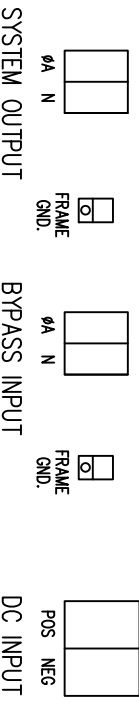


(VIEW FROM BOTTOM OF CABINET)



NOTE: ALL DIMENSIONS ARE IN INCHES UNLESS OTHERWISE SPECIFIED.

TERMINATION CONFIGURATION (BOTTOM, FRONT)
 TERMINAL BLOCK CAPACITY (BYPASS INPUT, SYSTEM OUTPUT): 350 MCM TO 6 GA.
 TERMINAL BLOCK CAPACITY (DC INPUT): 500 MCM TO 4 GA.
 GND. LUG CAPACITY: 1/0 TO 14 GA.



LTI Power Systems, Inc.

20KVA ASSEMBLY

LTI-ProUPS

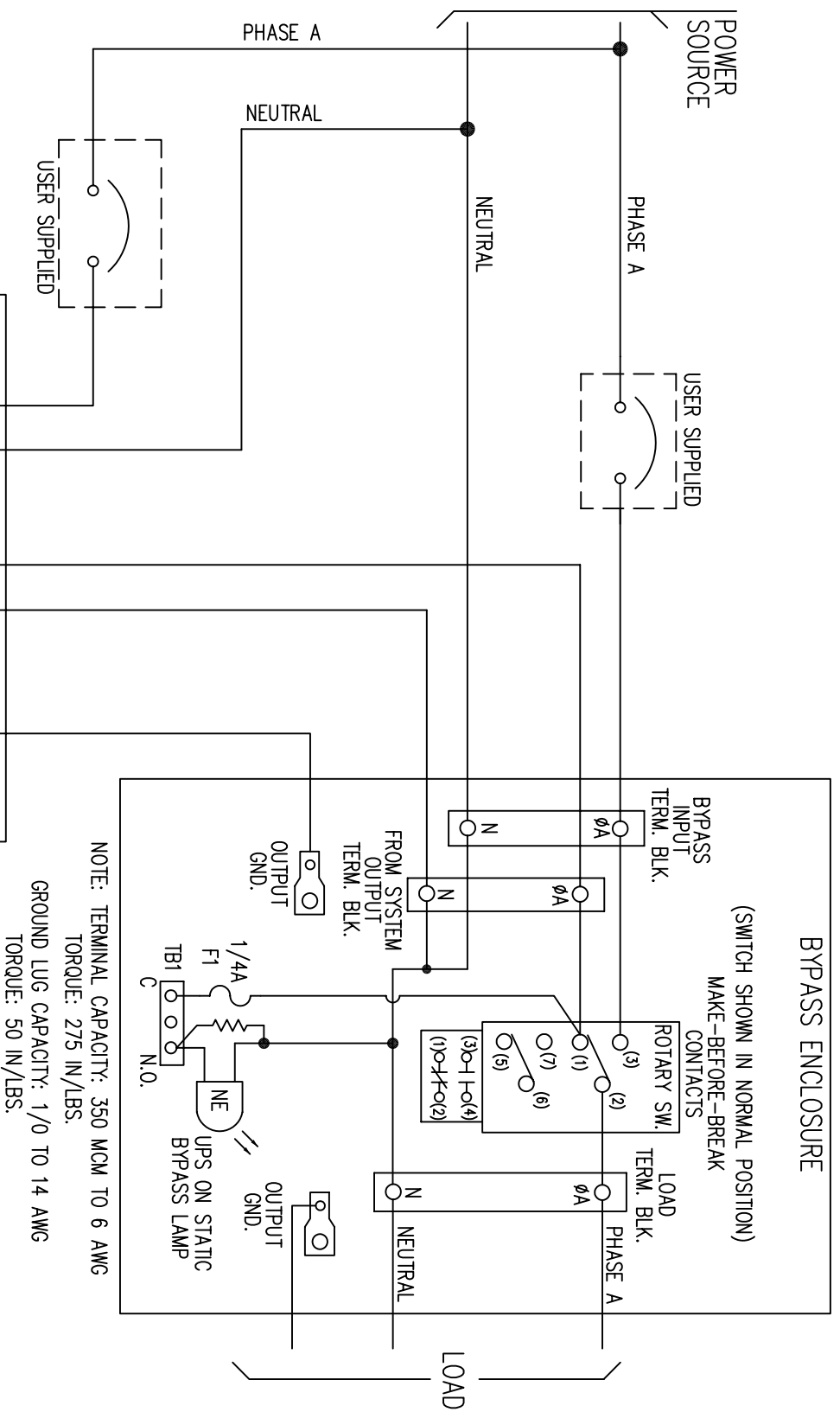
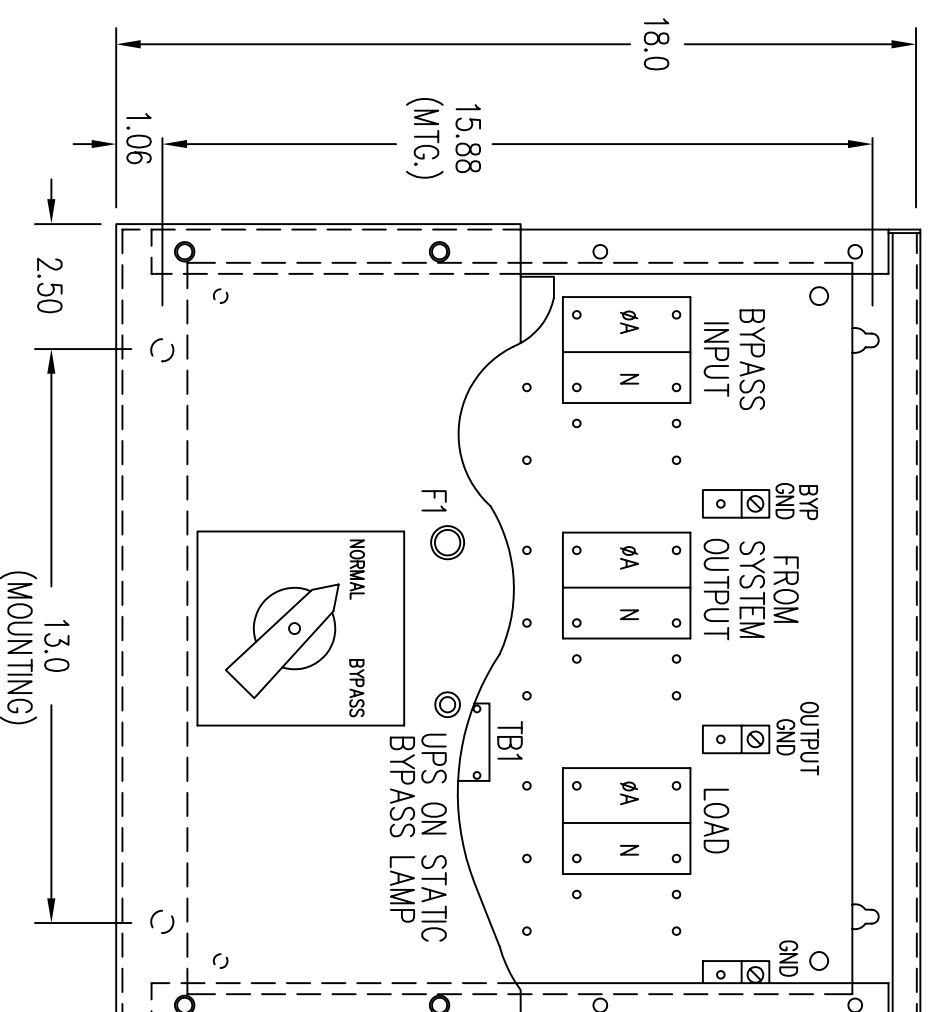
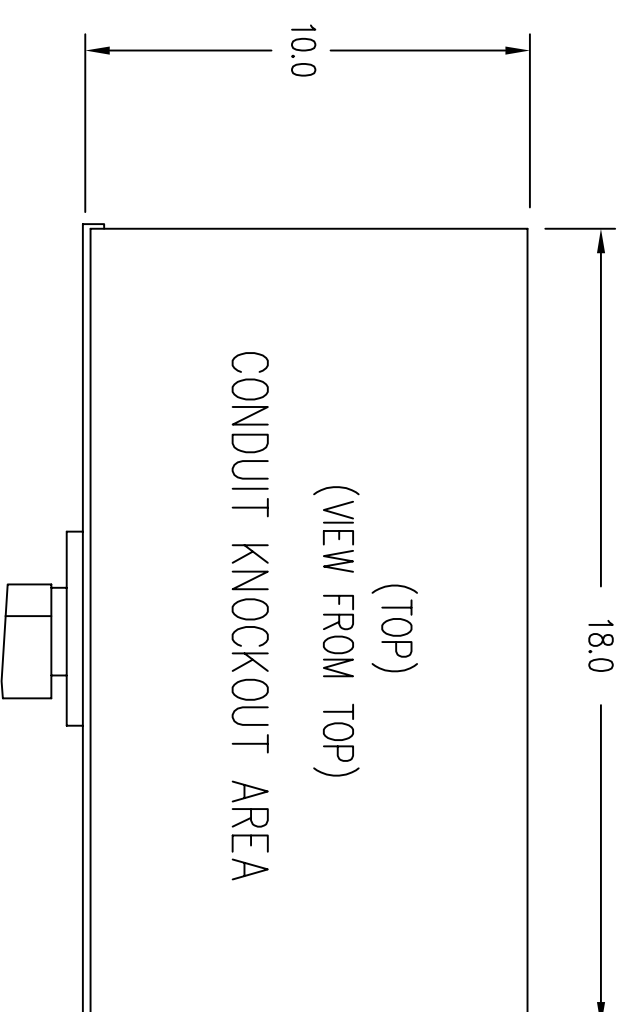
TEL. (440) 327-5050

10800 Middle Ave. Bldg. B Elyria, Ohio 44035

SHEET 1 OF 1

CAD DWG NAME: 20H12D BASE

REV. 1



NOTE: TERMINAL CAPACITY: 350 MCM TO 6 AWG
TORQUE: 275 IN/LBS.
GROUND LUG CAPACITY: 1/0 TO 14 AWG
TORQUE: 50 IN/LBS.

2 POSITION ROTARY SWITCH AUX. CONTACTS			
POSITION	1-2	3-4	
NORMAL	CLOSED	OPEN	
BYPASS	OPEN	CLOSED	

NOTES:

1. OBSERVE ALL PHASING WHEN CONNECTING EXTERNAL SWITCH CONTACTS.
2. EXTERNAL ROTARY SWITCH ENCLOSURE: NEMA TYPE 1, 18" L x 18" W x 10" D.
3. DO NOT OPERATE THE ROTARY SWITCH TO BYPASS POSITION WITH THE "UPS" DE-ENERGIZED.
4. NORMAL - THE UPS SUPPLYING THE LOAD.
BYPASS - THE HARD BYPASS SOURCE SUPPLYING THE LOAD.
5. REMOVE BLANK COVER PANEL TO ACCESS TERMINAL CONNECTIONS.

MOUNTING HOLES LOCATED ON BOTTOM SURFACE OF ENCLOSURE AND ARE DESIGNED FOR 5/16 HARDWARE.

BYPASS ENCLOSURE
(FRONT - VIEW FROM FRONT)
(BLANK COVER PANEL REMOVED)

240A SINGLE PHASE, 120V OUTPUT PROUPS SERIES EXTERNAL MAINTENANCE BYPASS SWITCH			
DESIGN	DATE	IC4232-904	ISSUE
WALLEN	8/15/08		
CHKD	DATE		
APPROV	DATE		
RMOROC	8-19-08	SHEET 1 OF 1	3