

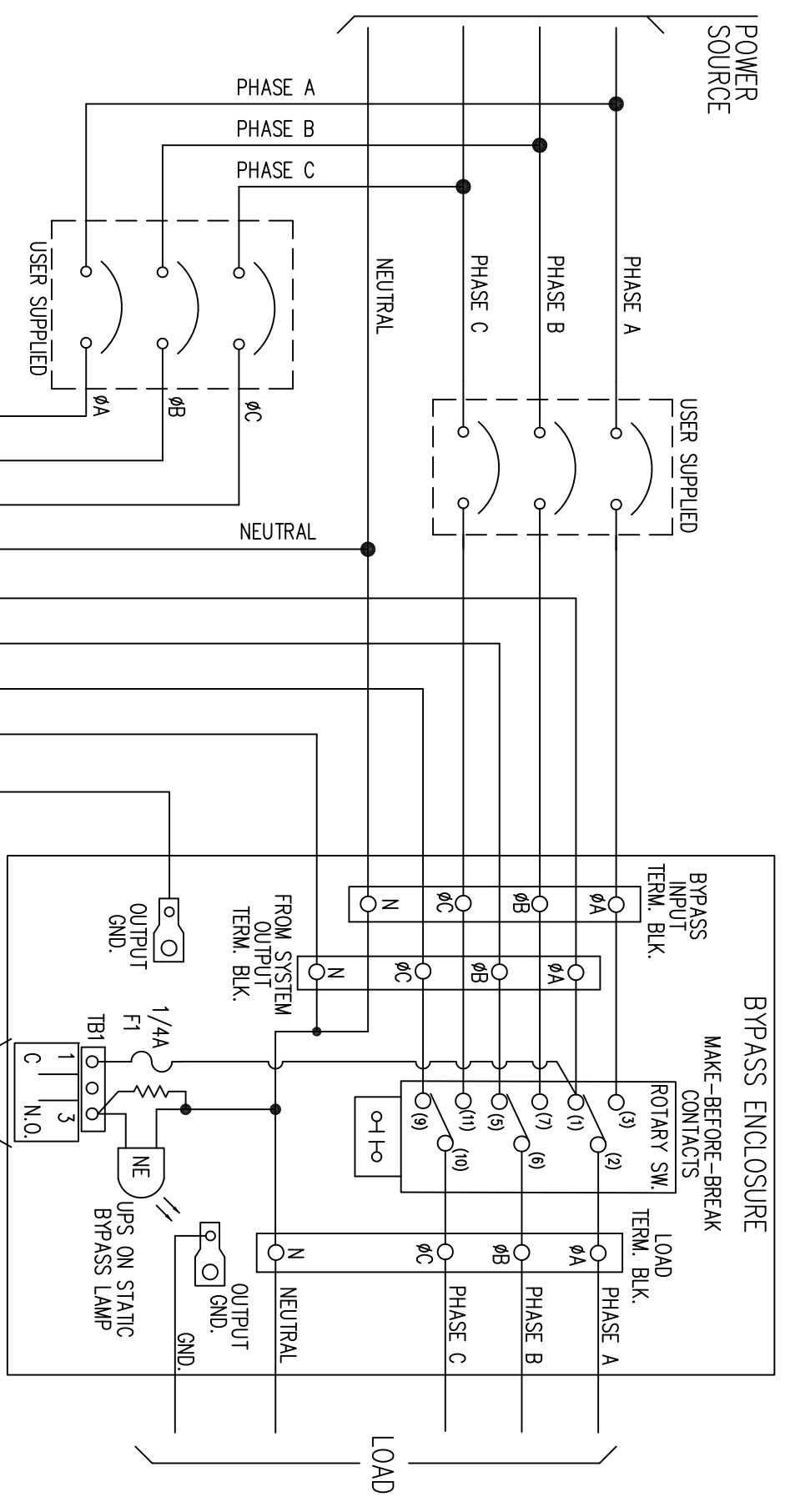
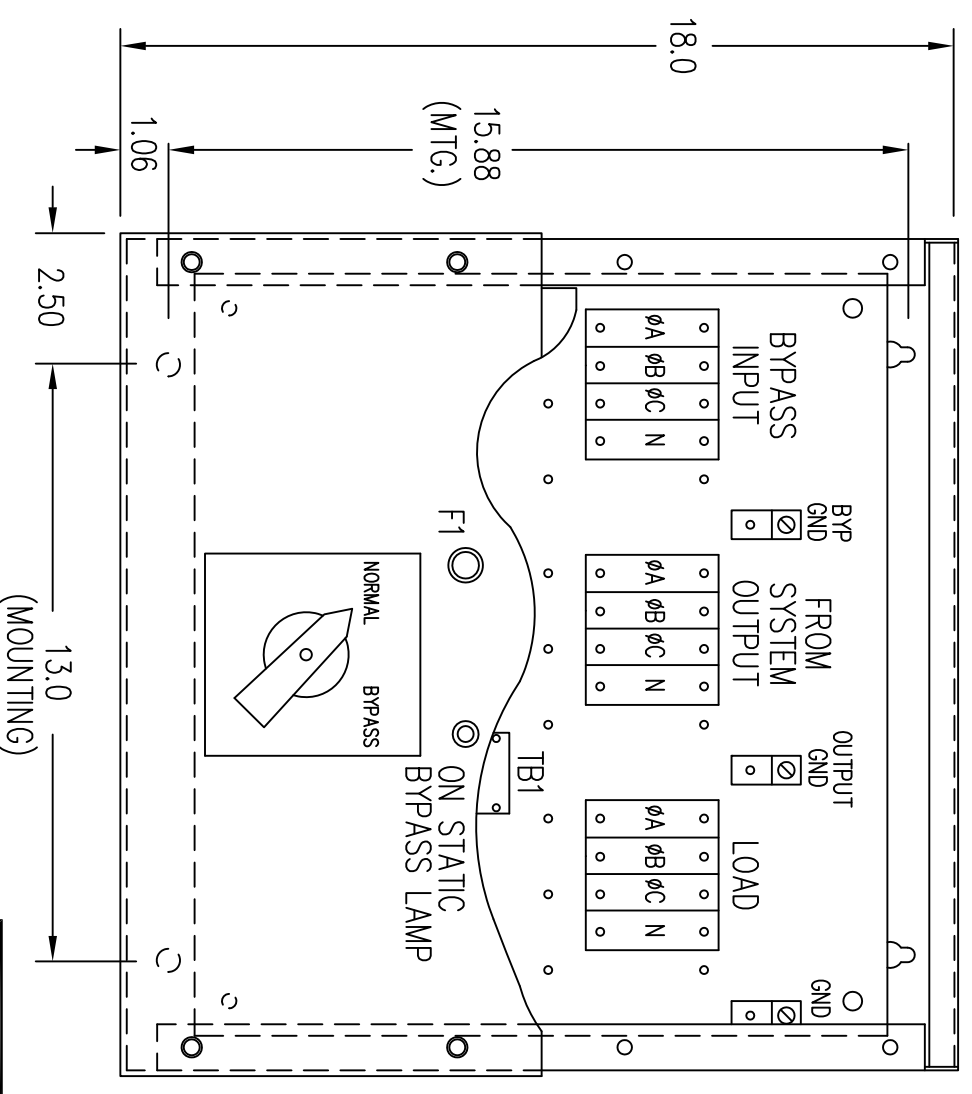
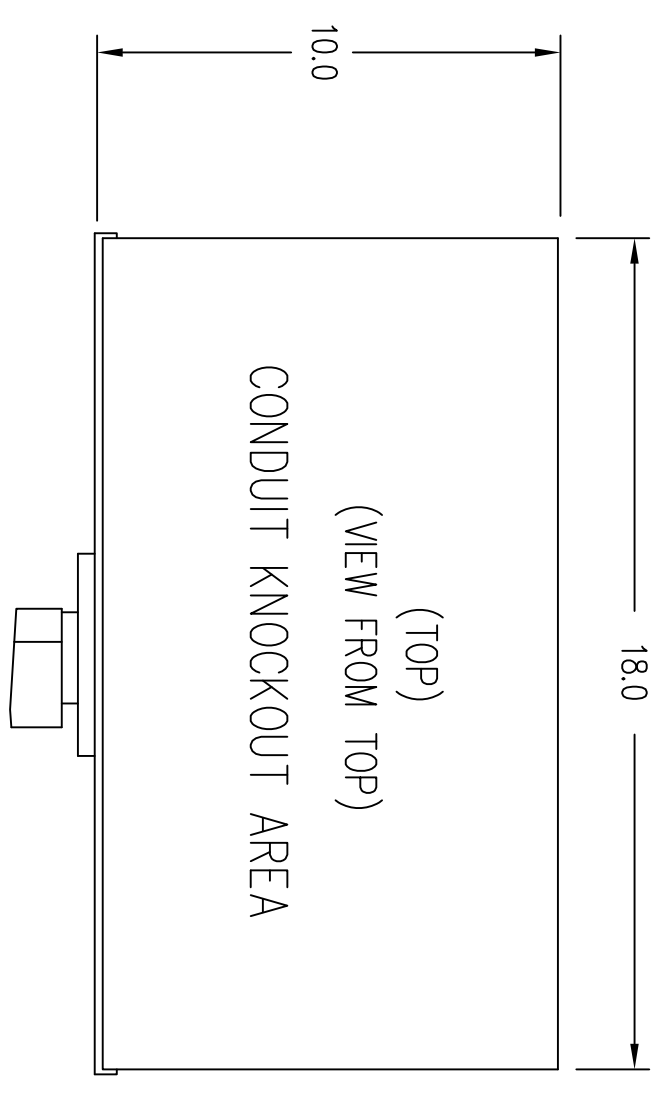
Notes: Unless otherwise specified, dimensions are in inches. Dimensions within brackets [ ] are in millimeters.  
 Recommended clearance for serviceability is 36" [914] in the front and 6" [152] on the remaining sides.

<p><b>LTI Power Systems, Inc.</b></p> <p>TEL. (440) 327-5050</p> <p>10800 Middle Ave. Elyria, Ohio 44035</p>	<p>ProUPS B1600 ENCLOSURE</p> <p>25KVA</p> <p>25KVA WEIGHT W/SKID: 2700 LBS. (1226 kg)</p>	<p>LTI-ProUPS</p> <p>CAD DWG NAME: B1600CAB_25*4820HD_150752</p>	<p>REV.</p> <p>1</p>
--	--	--	----------------------









TO UPS RELAY INTERFACE TERMINAL BLOCK  
"ON BYPASS" COM AND "ON BYPASS" N.O.  
NOTE: TERMINAL CAPACITY: 2/0 TO 14 AWG  
TORQUE: 50 IN./LBS.  
GROUND LUG CAPACITY: 1/0 TO 14 AWG  
TORQUE: 50 IN./LBS.

NOTES:

1. OBSERVE ALL PHASING WHEN CONNECTING EXTERNAL SWITCH CONTACTS.
2. EXTERNAL ROTARY SWITCH ENCLOSURE: NEMA TYPE 1, 18"L x 18"W x 10"D.
3. DO NOT OPERATE THE ROTARY SWITCH TO BYPASS POSITION WITH THE "UPS" DE-ENERGIZED.
4. NORMAL- THE UPS SUPPLYING THE LOAD.  
BYPASS- THE HARD BYPASS SOURCE SUPPLYING THE LOAD.
5. REMOVE BLANK COVER PANEL TO ACCESS TERMINAL CONNECTIONS.

MOUNTING HOLES LOCATED ON BOTTOM  
SURFACE OF ENCLOSURE AND ARE DESIGNED  
FOR 5/16 HARDWARE.

BYPASS ENCLOSURE  
(FRONT-VIEW FROM FRONT)  
(BLANK COVER PANEL REMOVED)

DESIGN		DATE		150A THREE PHASE OUTPUT PROUPS SERIES EXTERNAL MAINTENANCE BYPASS SWITCH	
DR/ALW	DATE 11	1-5	11	IC4232-903	
CHD	DATE				
TRPD	DATE 11	1-5	11	SHEET 1 OF 1	ISSUE 3