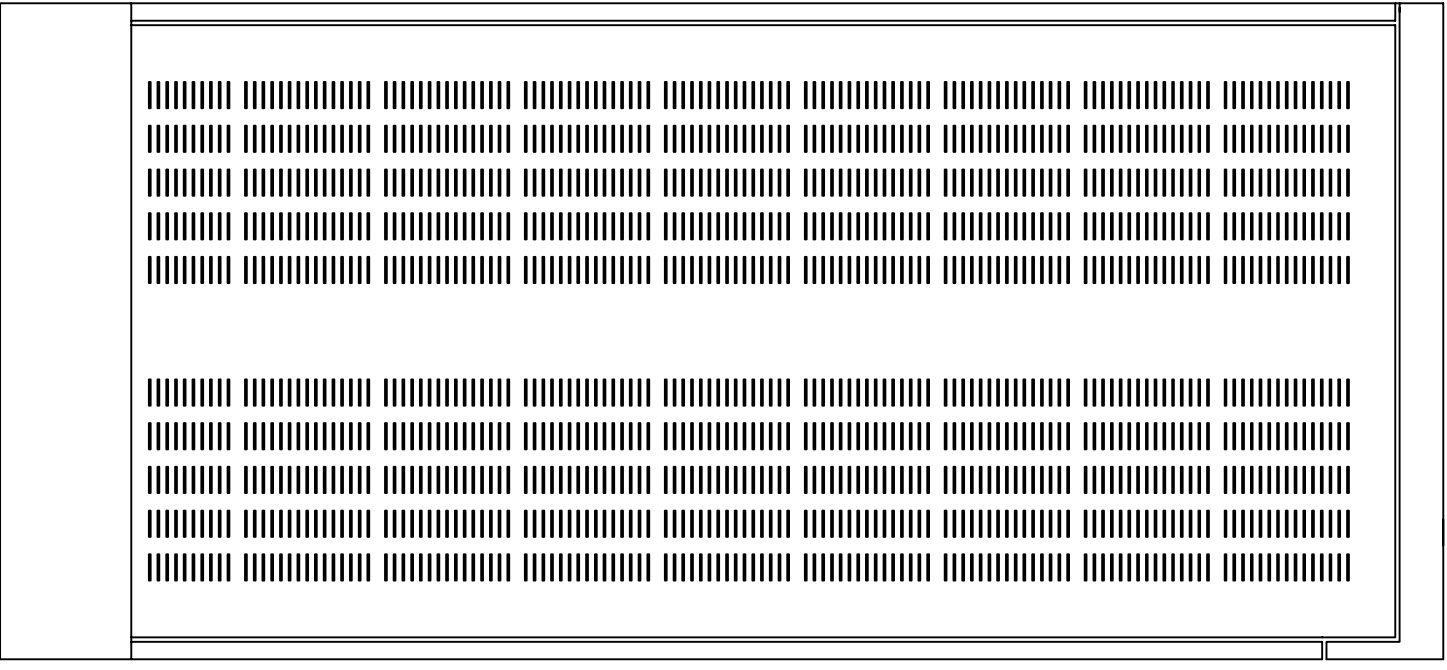
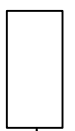


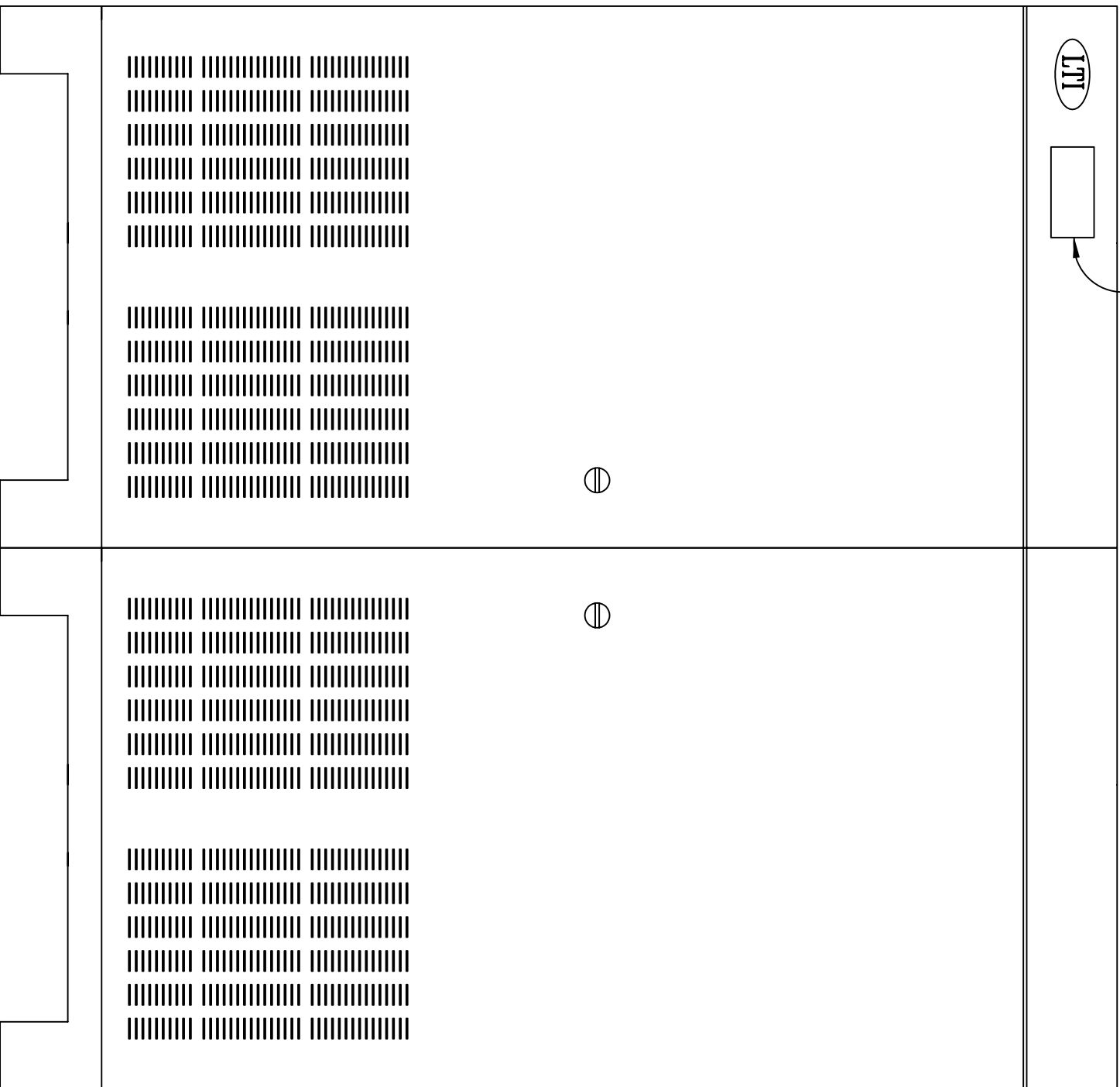
63.0 [1600]
 31.5 [800]
 STANDARD DISPLAY

[762]
 30.0

LTI



LEFT



FRONT



RIGHT

65.0
 [1650]

Notes: Unless otherwise specified, dimensions are in inches. Dimensions within brackets [] are in millimeters.
 Recommended clearance for serviceability is 36" [914] in the front and 6" [152] on the remaining sides.

LTI Power Systems, Inc.

ProUPS B1600 ENCLOSURE 30KVA WEIGHT W/SKID: 2300 LBS. (1035 kg)
 30KVA

LTI-ProUPS

TEL. (440) 327-5050

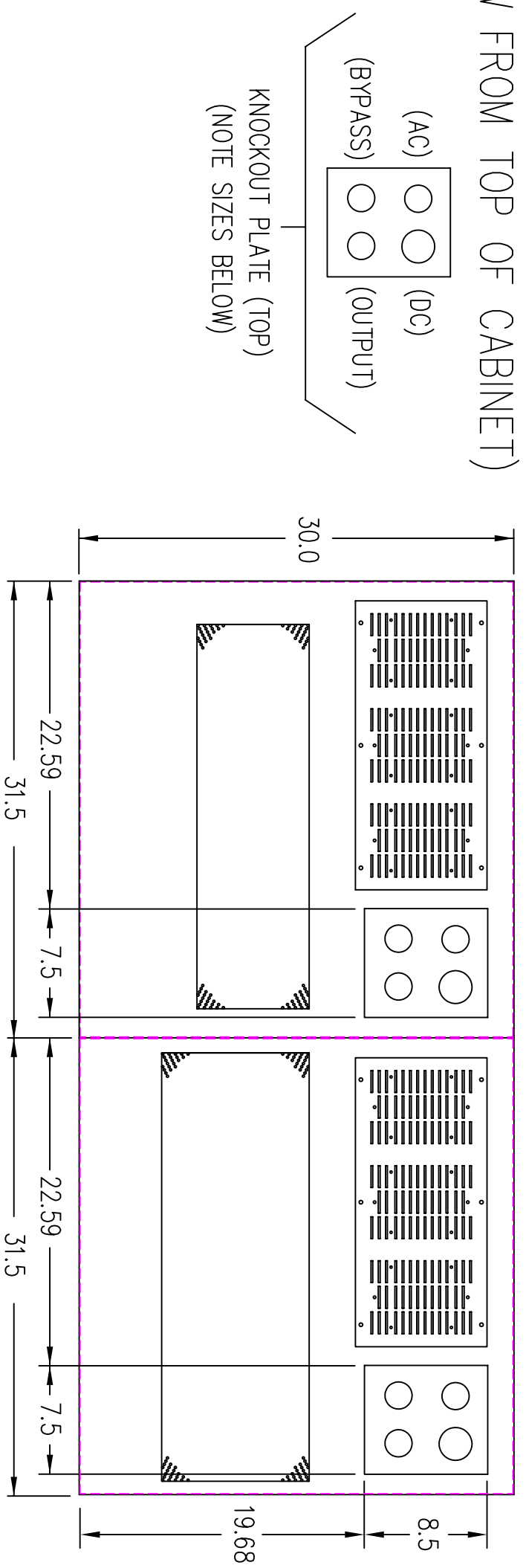
10800 Middle Ave. Elyria, Ohio 44035

CAD DWG NAME: B1600CAB_304812HF_100111

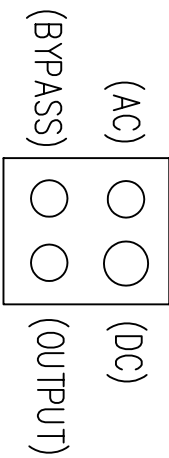
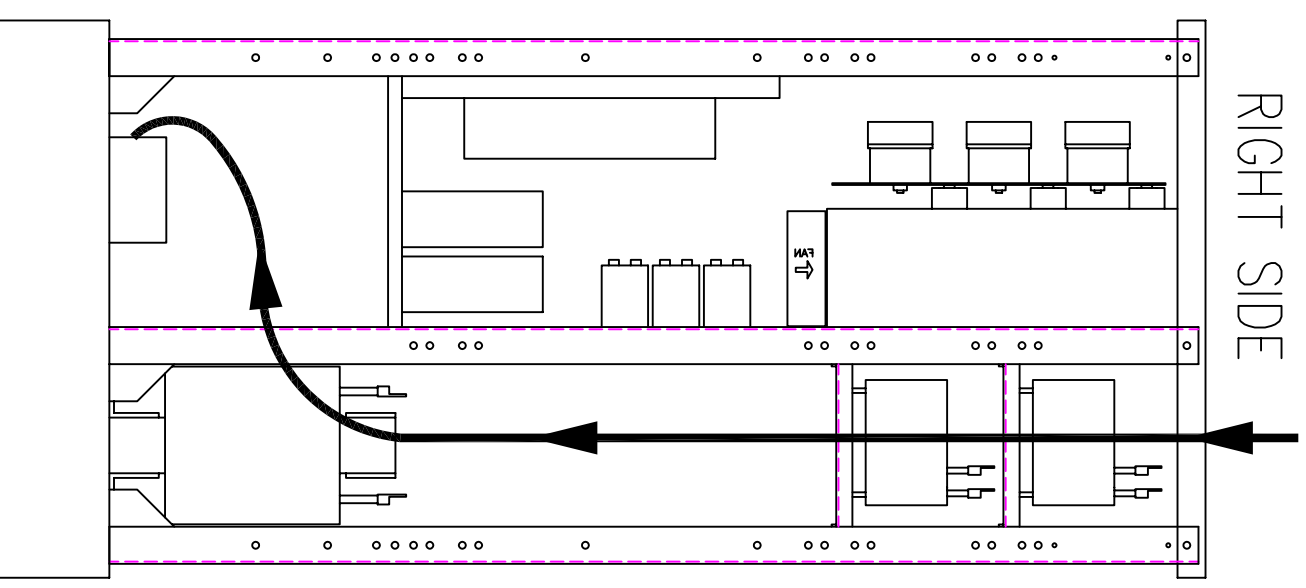
REV.

1

(VIEW FROM TOP OF CABINET)

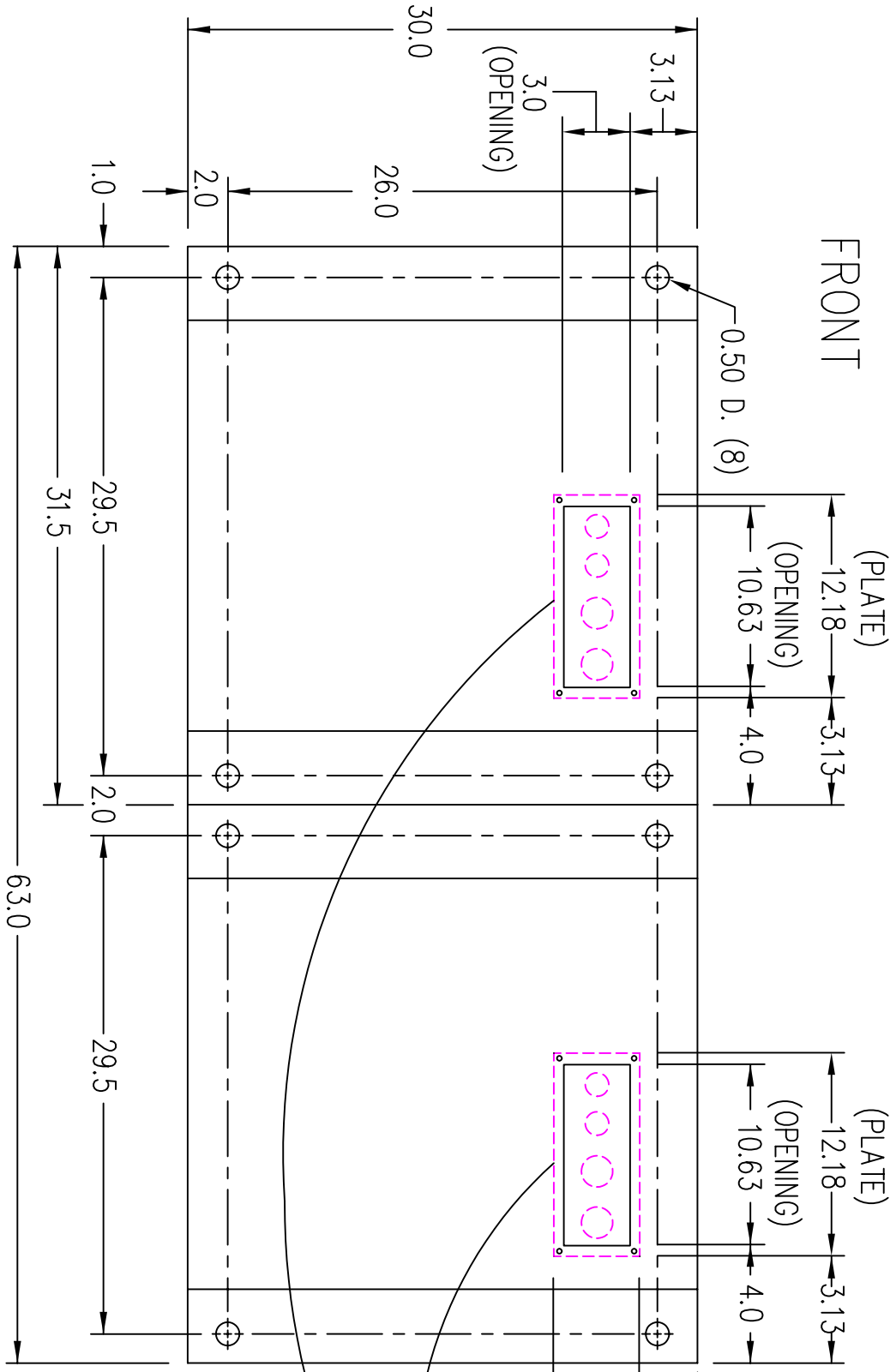


RIGHT SIDE

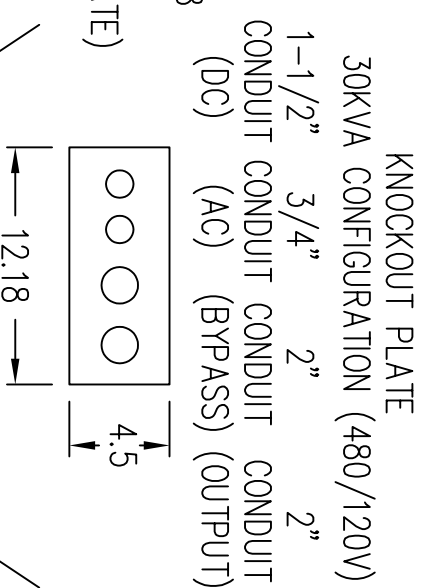


KNOCKOUT PLATE (TOP)
(NOTE SIZES BELOW)

FRONT



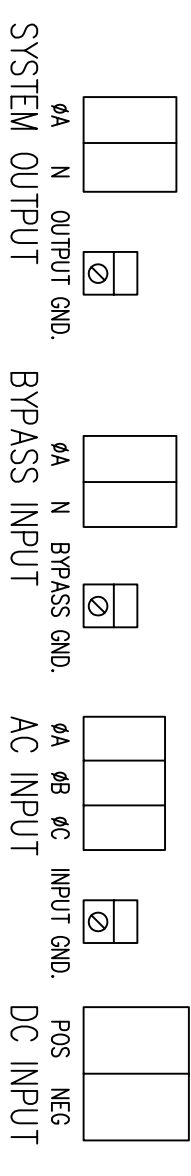
FRONT



KNOCKOUT PLATE
30KVA CONFIGURATION (480/120V)
1-1/2" 3/4" 2" 2"
CONDUIT CONDUIT CONDUIT CONDUIT
(DC) (AC) (BYPASS) (OUTPUT)

FOR TOP CABLE ENTRY, ROUTE WIRES DOWN RIGHT SIDE THROUGH OPEN AREA OF UPRIGHT CENTER PANEL TO TERMINALS LOCATED ON BASE PANEL.

TERMINATION CONFIGURATION (BOTTOM, FRONT)
TERMINAL BLOCK CAPACITY (AC INPUT): 2/0 TO 14 GA.
TERMINAL BLOCK CAPACITY (BYPASS IN/AC OUTPUT): 500 MCM TO 4 GA.
TERMINAL BLOCK CAPACITY (DC INPUT): 350 MCM TO 6 GA.
GROUND LUG CAPACITY: 14 GA. TO 1/0 GA.



NOTE: ALL DIMENSIONS ARE IN INCHES UNLESS OTHERWISE SPECIFIED.

(VIEW FROM BOTTOM OF CABINET)

