

63.0 [1600]

31.5 [800]

STANDARD DISPLAY

[864]

34.0

65.0 [1650]

Notes: Unless otherwise specified, dimensions are in inches. Dimensions within brackets [ ] are in millimeters.  
 Recommended clearance for serviceability is 36" [914] in the front and 6" [152] on the remaining sides.

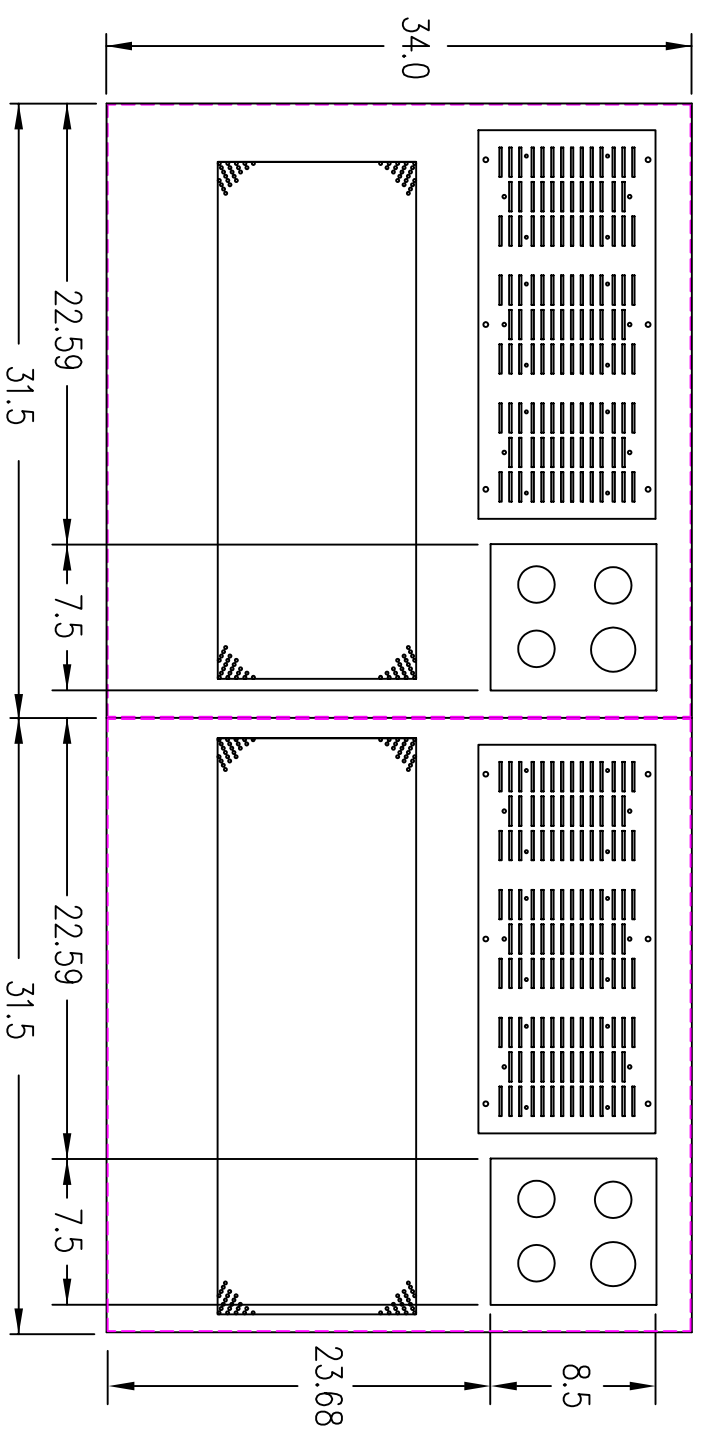
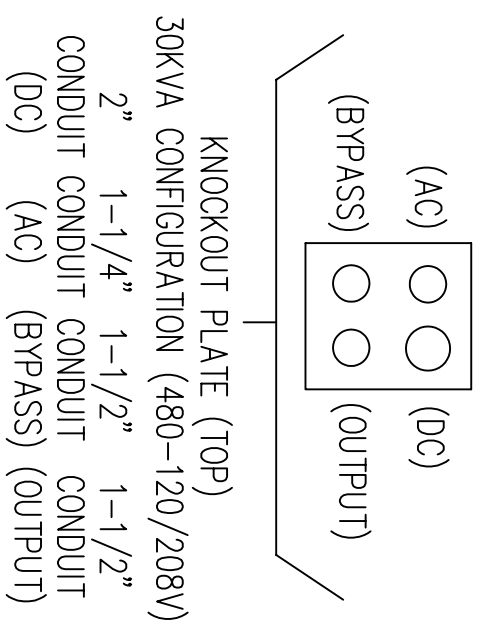
**LTI Power Systems, Inc.**  
 TEL. (440) 327-5050  
 10800 Middle Ave. Elyria, Ohio 44035

ProUPS B1600 ENCLOSURE 30KVA WEIGHT W/SKID: 2700 LBS. (1226 kg)  
 30KVA  
 PO# 51996-0021-00/22000198

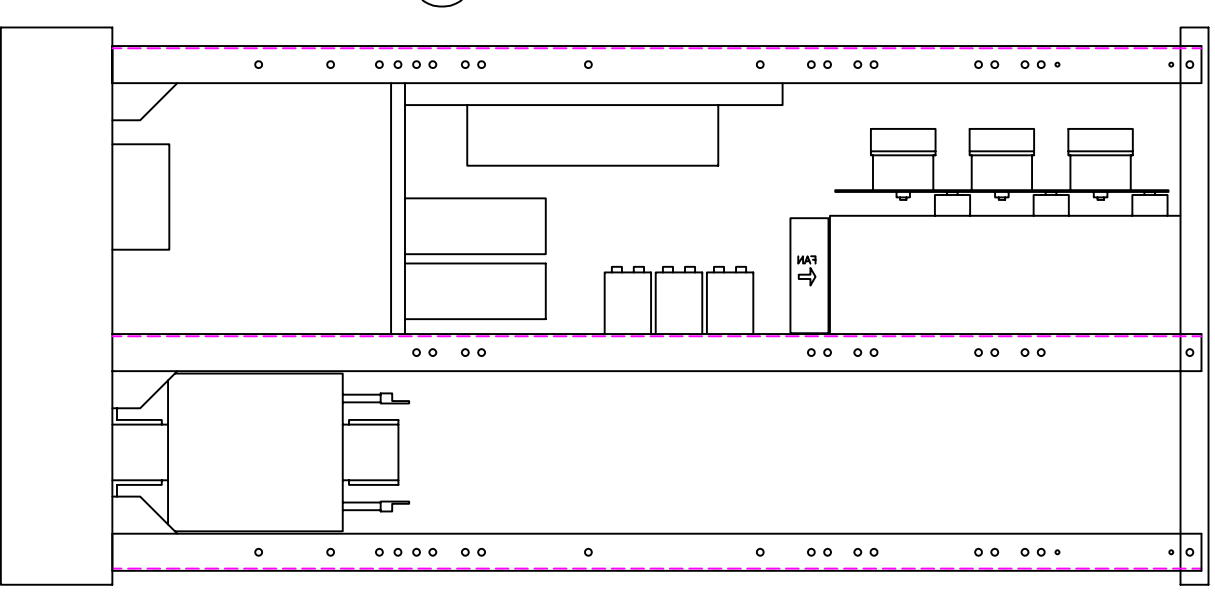
**LTI-ProUPS**  
 CAD DWG NAME: B1600CAB\_304820HD\_212194  
 REV. 1



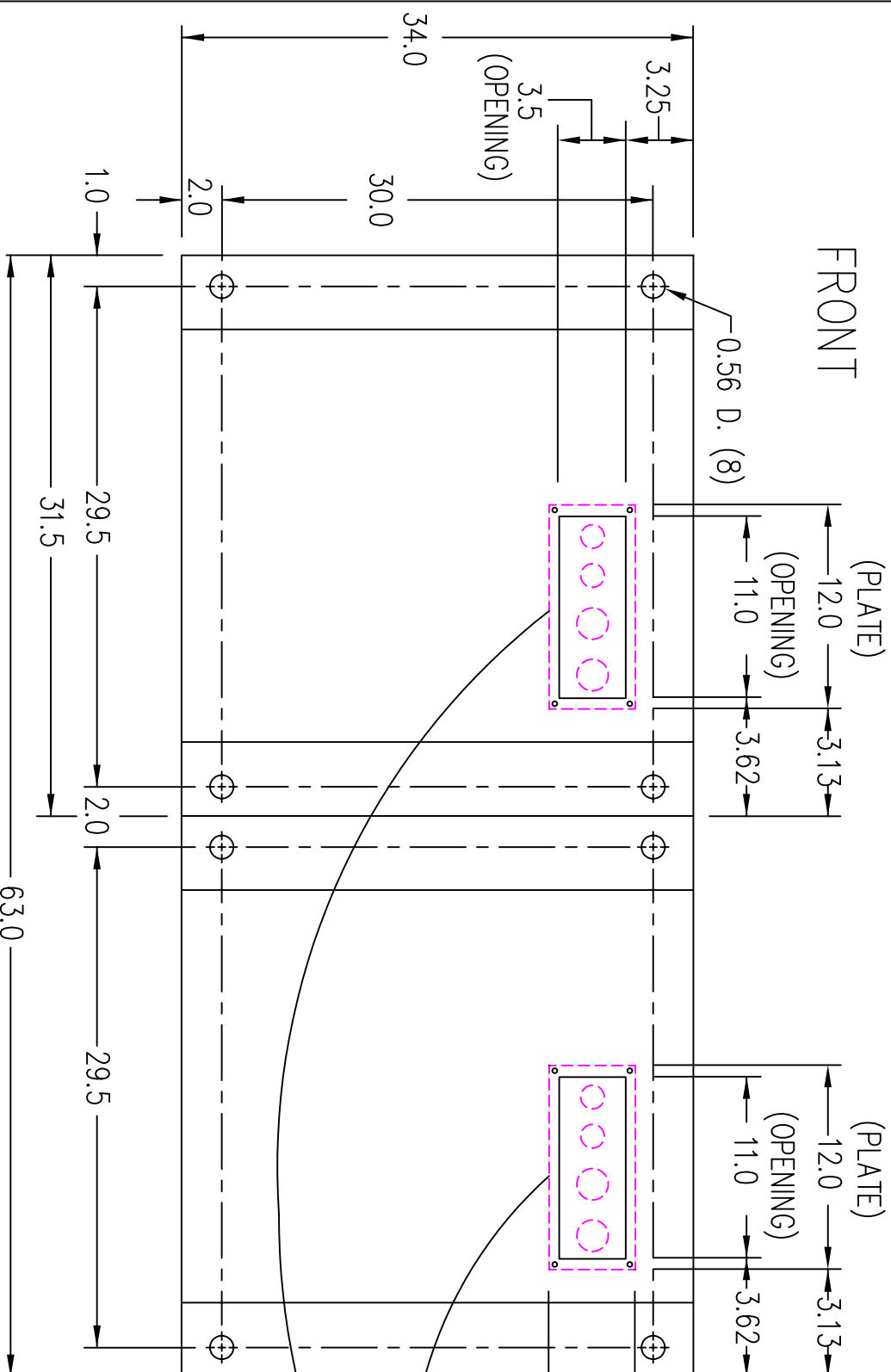
(VIEW FROM TOP OF CABINET)



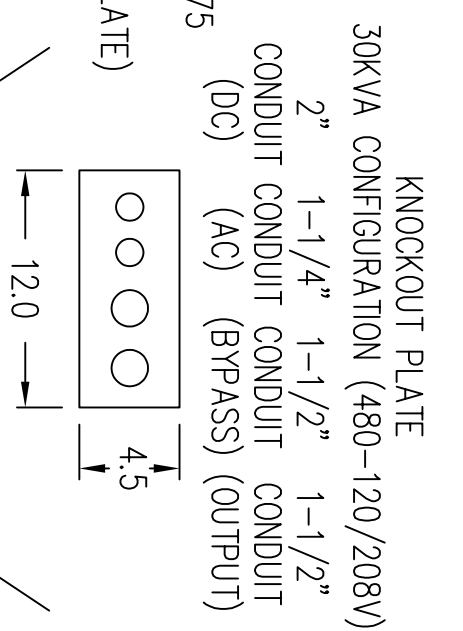
RIGHT SIDE



FRONT



FRONT

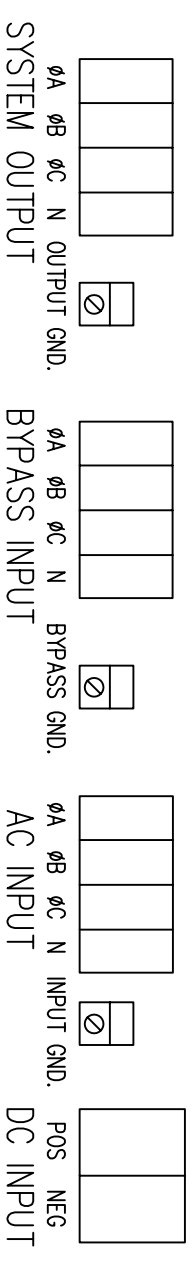


TERMINATION CONFIGURATION (BOTTOM, FRONT)

TERMINAL BLOCK CAPACITY (AC/BYPASS INPUT/AC OUTPUT): 2/0 TO 14 GA.

TERMINAL BLOCK CAPACITY (DC INPUT): (2) 500 MCM TO (2) 4 GA.

GROUND LUG CAPACITY: 14 GA. TO 1/0 GA.



NOTE: ALL DIMENSIONS ARE IN INCHES UNLESS OTHERWISE SPECIFIED.

(VIEW FROM BOTTOM OF CABINET)

**LTI Power Systems, Inc.**

TEL. (440) 327-5050

10800 Middle Ave. Bldg. B Elyria, Ohio 44035

30KVA ASSEMBLY  
PO# 51996-0021-00/22000198

SHEET 1 OF 1

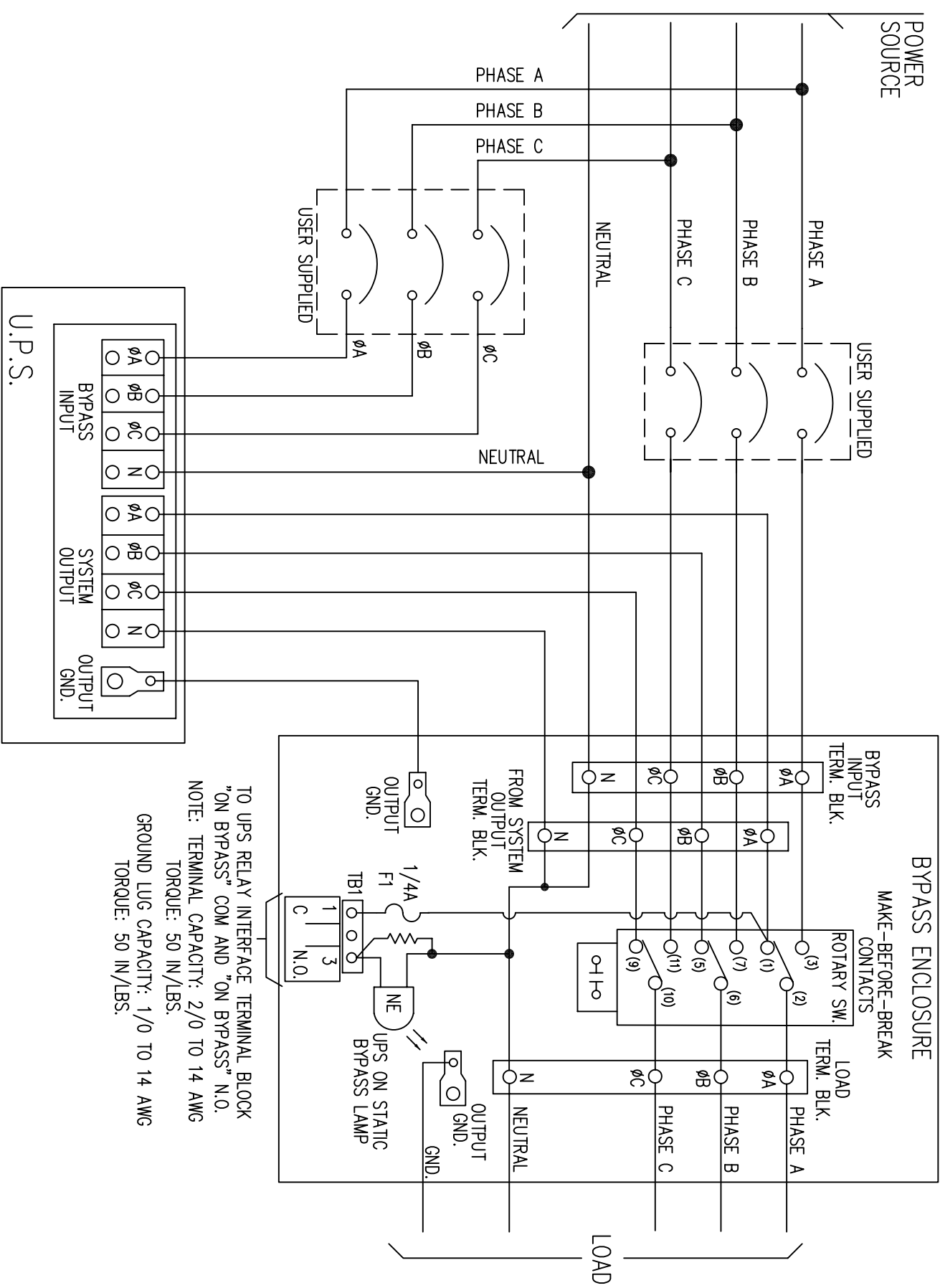
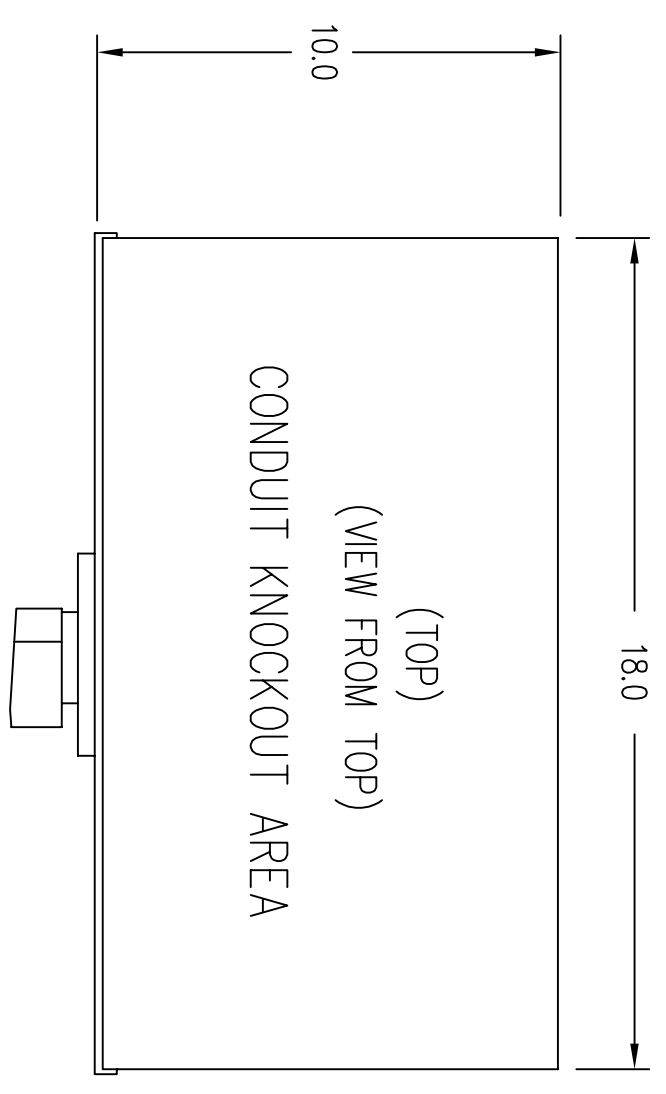
LTI-ProUPS

CAD DWG NAME: 304820HD\_BASE\_212194

REV.

1



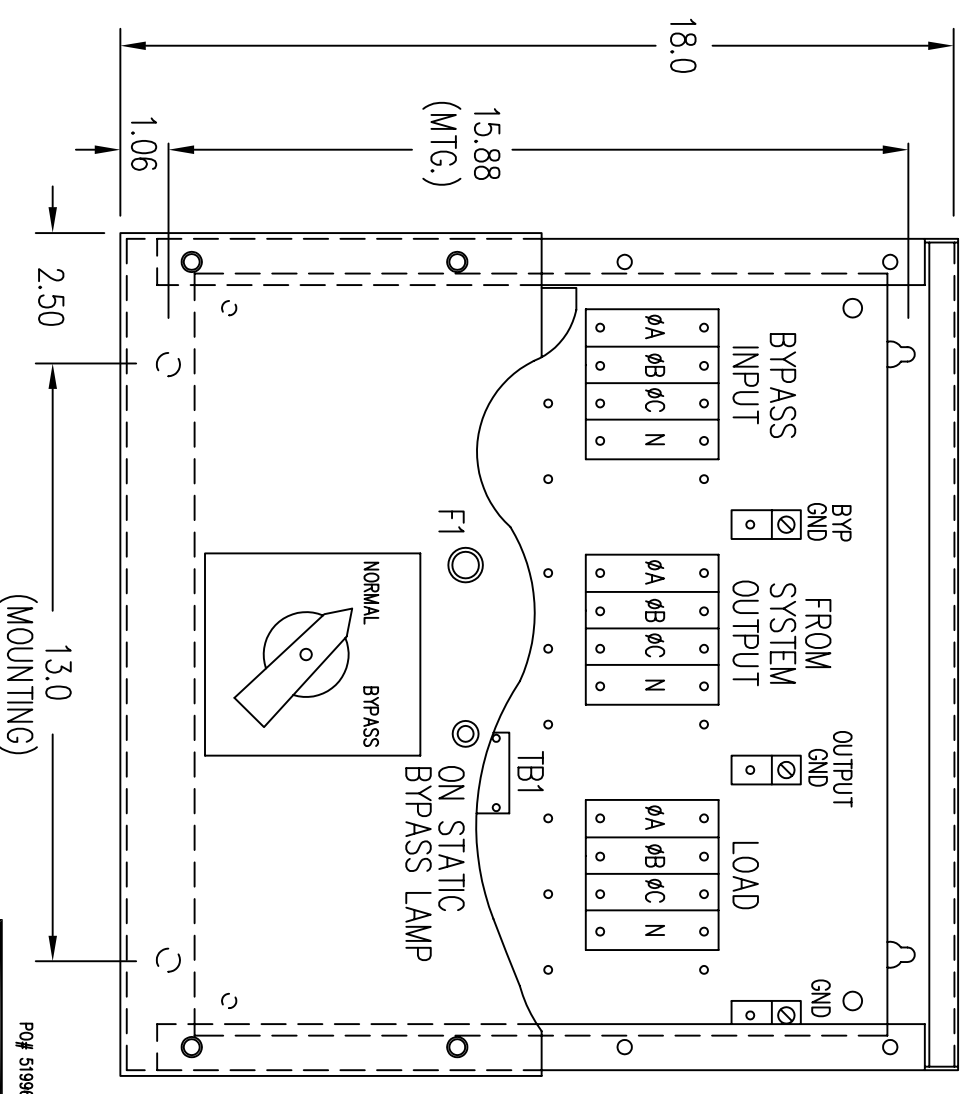


TO UPS RELAY INTERFACE TERMINAL BLOCK  
 "ON BYPASS" COM AND "ON BYPASS" N.O.  
 NOTE: TERMINAL CAPACITY: 2/0 TO 14 AWG  
 TORQUE: 50 IN./LBS.  
 GROUND LUG CAPACITY: 1/0 TO 14 AWG  
 TORQUE: 50 IN./LBS.

NOTES:

1. OBSERVE ALL PHASING WHEN CONNECTING EXTERNAL SWITCH CONTACTS.
2. EXTERNAL ROTARY SWITCH ENCLOSURE: NEMA TYPE 1, 18"L x 18"W x 10"D.
3. DO NOT OPERATE THE ROTARY SWITCH TO BYPASS POSITION WITH THE "UPS" DE-ENERGIZED.
4. NORMAL- THE UPS SUPPLYING THE LOAD.  
 BYPASS- THE HARD BYPASS SOURCE SUPPLYING THE LOAD.
5. REMOVE BLANK COVER PANEL TO ACCESS TERMINAL CONNECTIONS.

MOUNTING HOLES LOCATED ON BOTTOM  
 SURFACE OF ENCLOSURE AND ARE DESIGNED  
 FOR 5/16 HARDWARE.



PQ# 51996-0021-00/22000198

100A THREE PHASE OUTPUT PROUPS SERIES EXTERNAL MAINTENANCE BYPASS SWITCH			
DESIGN	DATE	ISSUE	
DRAWN	DATE	IC4232-902	
CHKD	DATE		
APPD	DATE		
REVISION	DATE		
		SHEET 1 OF 1	ISSUE 3