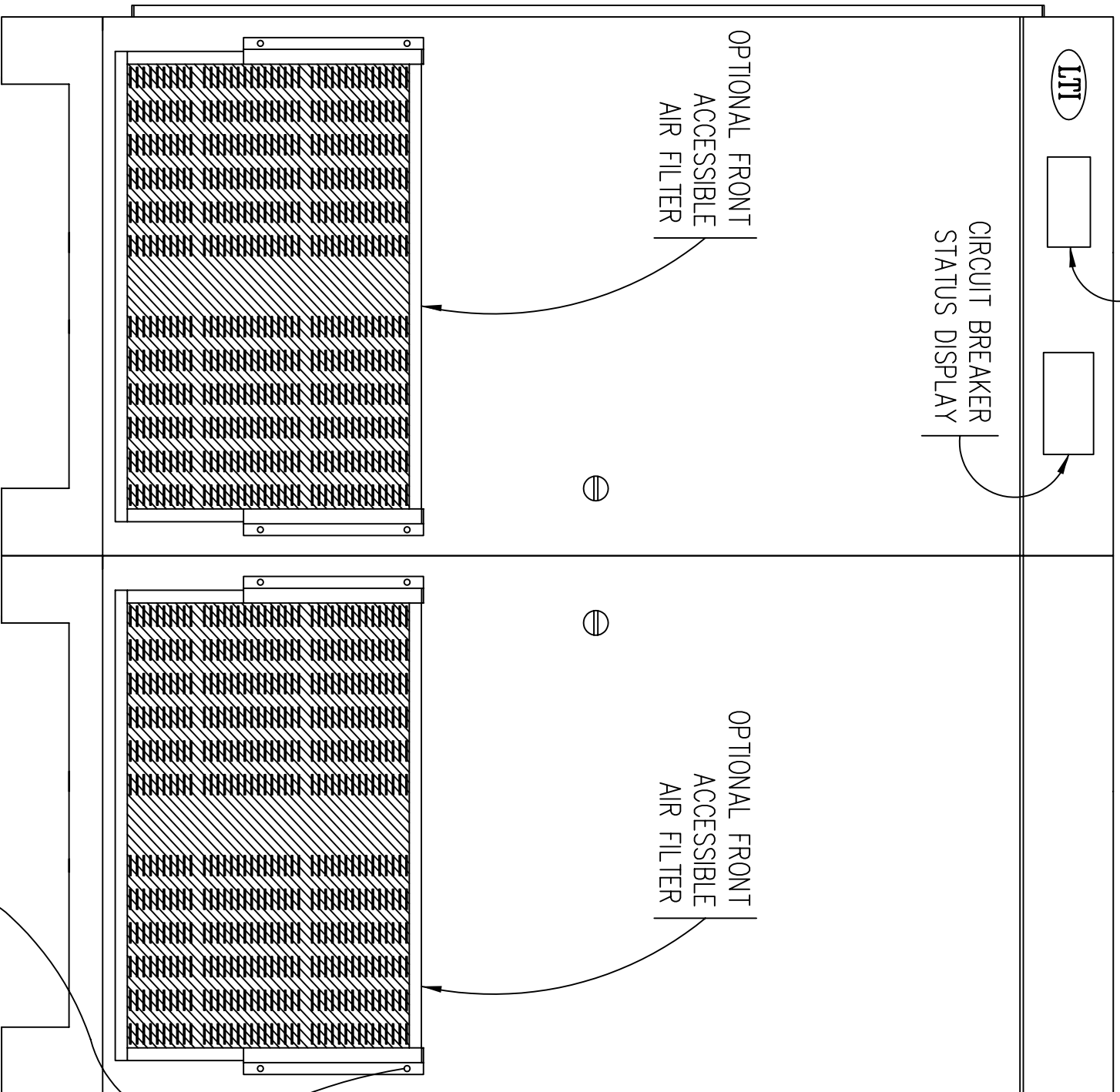
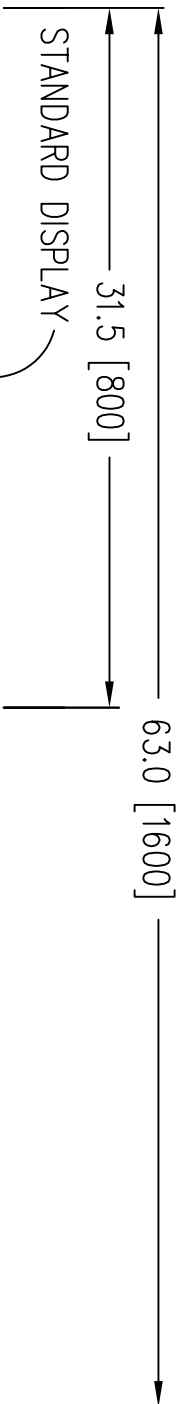


LEFT



FRONT



RIGHT

Notes: Unless otherwise specified, dimensions are in inches. Dimensions within brackets [] are in millimeters.
 Recommended clearance for serviceability is 36" [914] in the front and 6" [152] on the remaining sides.

TO REMOVE FRONT FILTER, REMOVE TOP SCREW FROM EACH SIDE BRACKET. ROTATE BRACKETS AWAY FROM FILTER, THEN SLIDE FILTER UP AND REPLACE AS NECESSARY.

LTI Power Systems, Inc.

ProUPS B1600 ENCLOSURE
 40KVA

40KVA WEIGHT: 2400 LBS. (1080 kg)

LTI-ProUPS

REV.

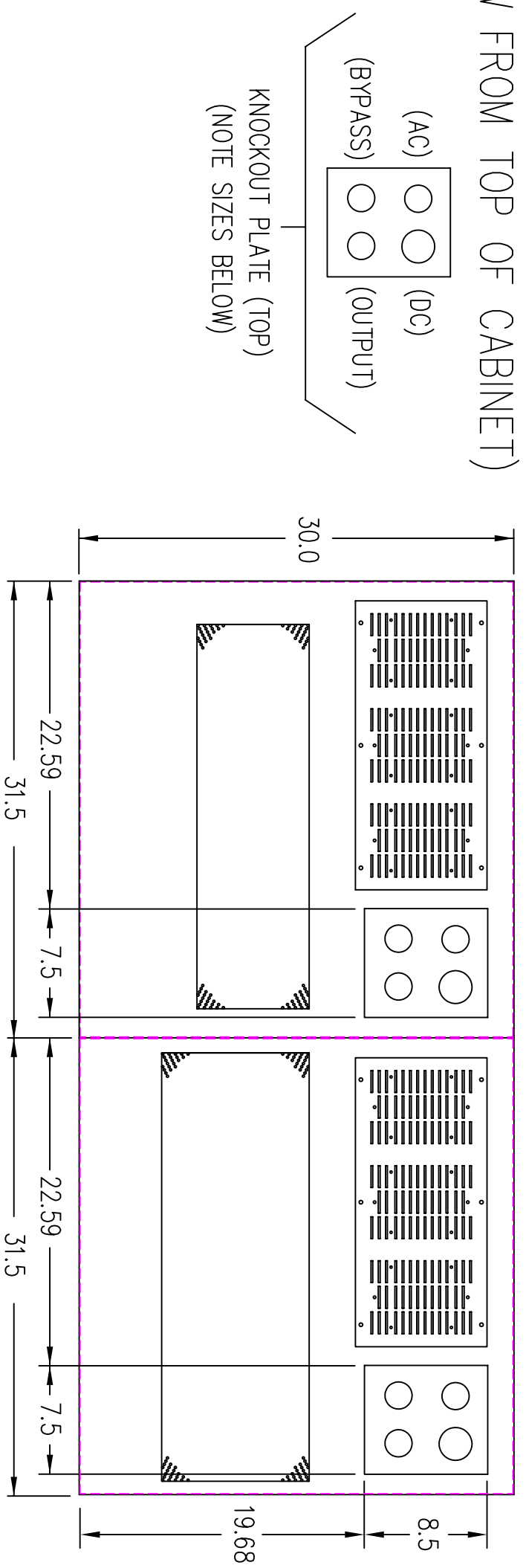
1

TEL. (440) 327-5050

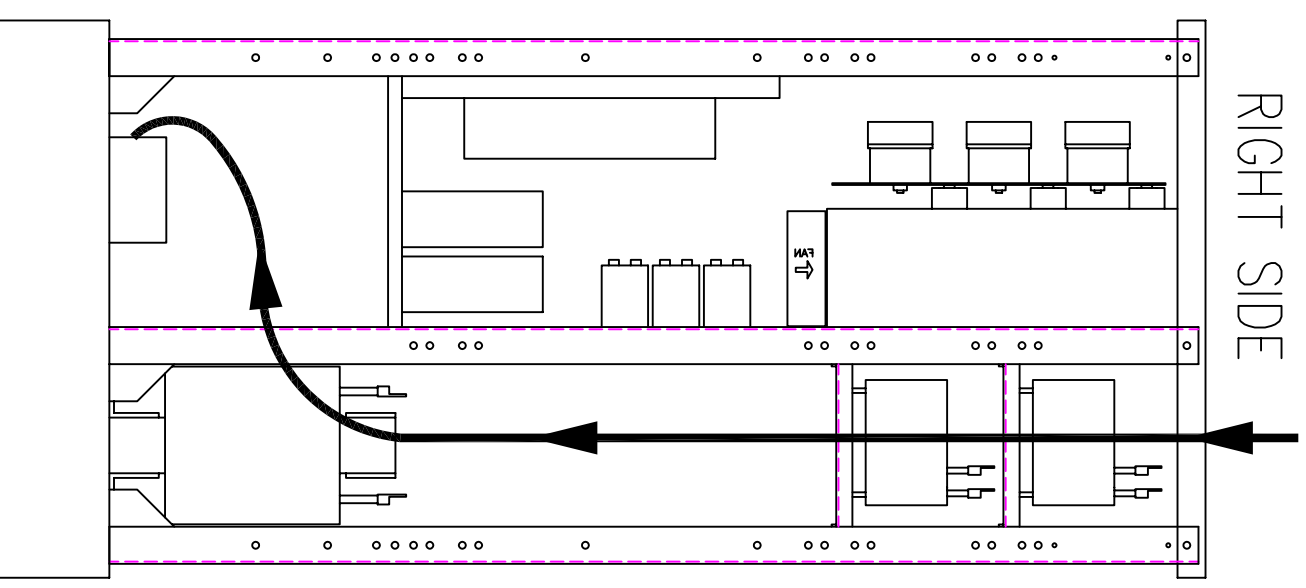
10800 Middle Ave. Elyria, Ohio 44035

CAD DWG NAME: B1600CAB_404824LF

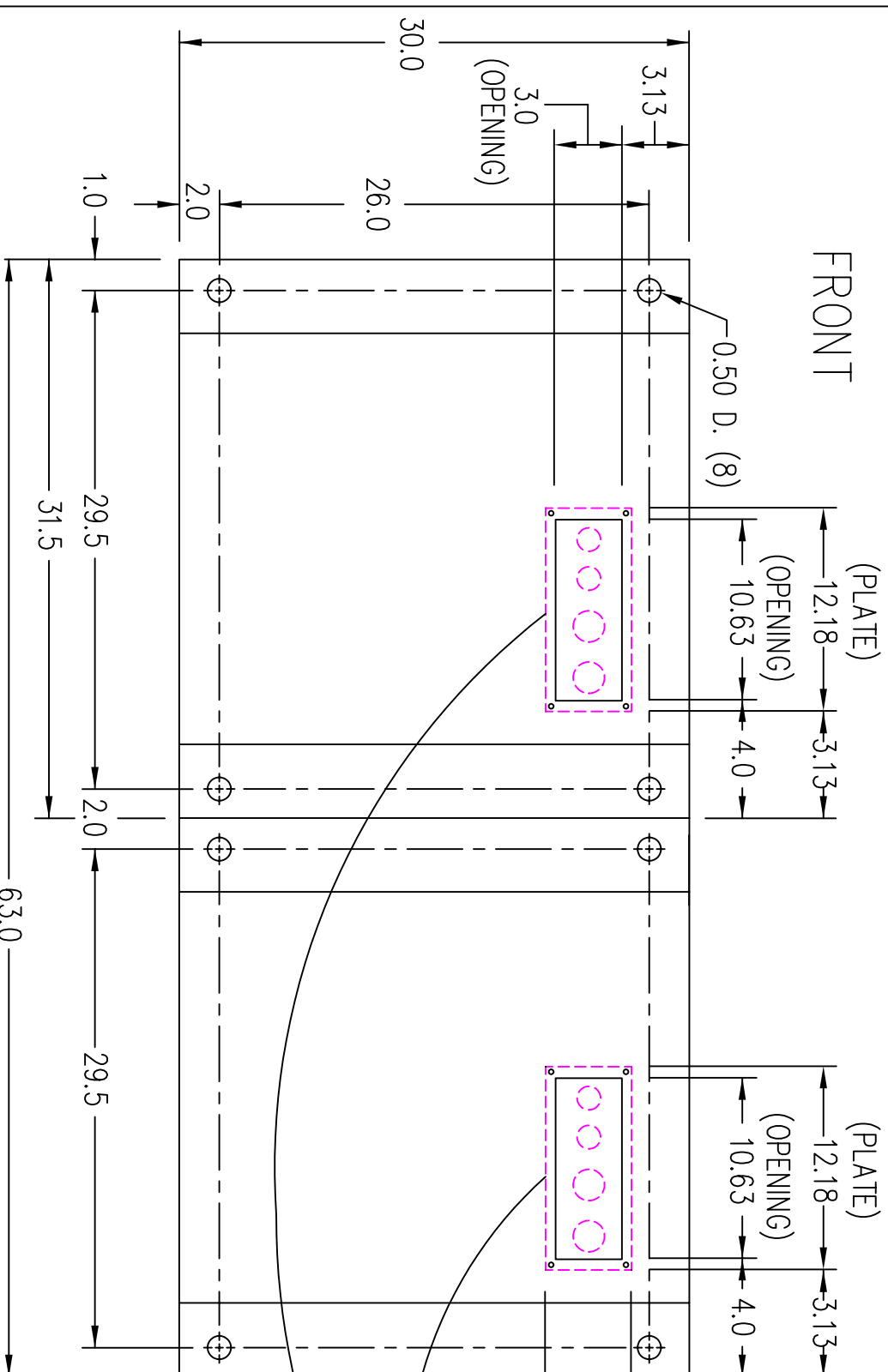
(VIEW FROM TOP OF CABINET)



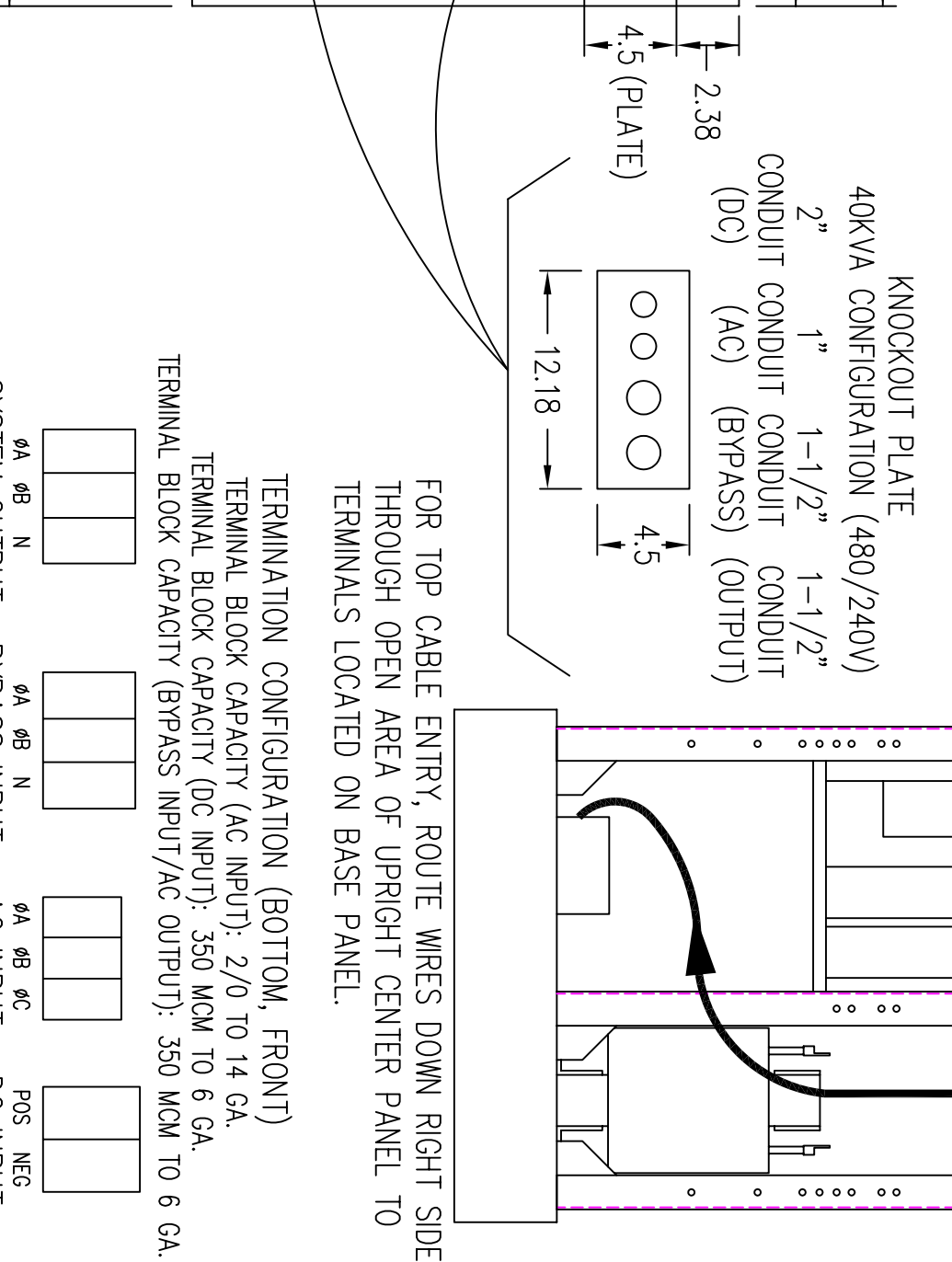
RIGHT SIDE



FRONT

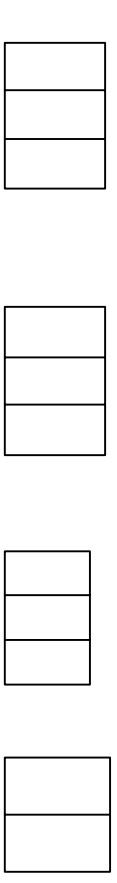


FRONT



FOR TOP CABLE ENTRY, ROUTE WIRES DOWN RIGHT SIDE THROUGH OPEN AREA OF UPRIGHT CENTER PANEL TO TERMINALS LOCATED ON BASE PANEL.

TERMINATION CONFIGURATION (BOTTOM, FRONT)
 TERMINAL BLOCK CAPACITY (AC INPUT): 2/0 TO 14 GA.
 TERMINAL BLOCK CAPACITY (DC INPUT): 350 MCM TO 6 GA.
 TERMINAL BLOCK CAPACITY (BYPASS INPUT/AC OUTPUT): 350 MCM TO 6 GA.



NOTE: ALL DIMENSIONS ARE IN INCHES UNLESS OTHERWISE SPECIFIED.

(VIEW FROM BOTTOM OF CABINET)

LTI Power Systems, Inc.

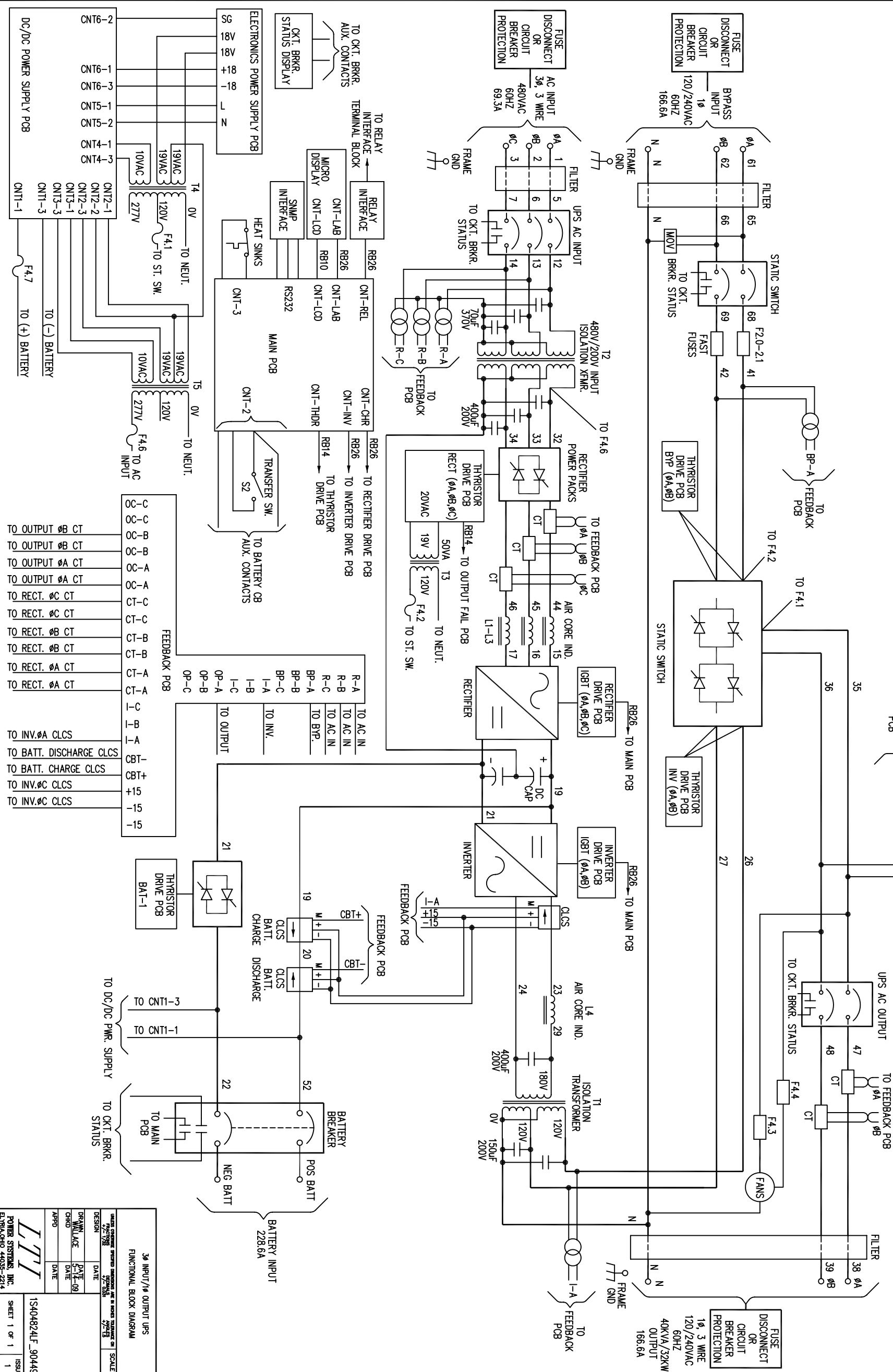
40KVA ASSEMBLY

SHEET 1 OF 1

LTI-PROUPS

REV. 1

- NOTES:
1. WIRE SIZES BASED ON 90°C COPPER CONDUCTORS OPERATING IN 30°C AMBIENT AND NEC TABLES 250-95 AND 310-16. INCREASE CONDUCTOR SIZE FOR LONG RUNS.
 2. CLOCKWISE PHASE ROTATION MUST BE OBSERVED FOR BYPASS AND AC INPUTS.
 3. CLCS = CLOSED LOOP CURRENT SENSOR



AC INPUT	MAX. INPUT CURRENT	CT. BRKR. RATING	A.I.C. RATING	TERM. CAPACITY	TORQUE	REQM. SIZE	REQM. FUSING	REQM. CONDUIT
480V	69.3A	80A	25,000	14-2/0 AWG	50 IN/LBS	3 AWG	100A	1"
BYPASS INPUT/AC OUTPUT	MAX. CURRENT	CT. BRKR. RATING	A.I.C. RATING	TERM. CAPACITY	TORQUE <td>REQM. SIZE</td> <td>REQM. FUSING</td> <td>REQM. CONDUIT</td>	REQM. SIZE	REQM. FUSING	REQM. CONDUIT
120/240V	166.6A	200A	65,000	350CM-6 GA.	275 IN/LBS	3/0 AWG	225A	4 AWG
DC INPUT	MAX. CURRENT	CT. BRKR. RATING	A.I.C. RATING	TERM. CAPACITY	TORQUE <td>REQM. SIZE</td> <td>REQM. FUSING</td> <td>REQM. CONDUIT</td>	REQM. SIZE	REQM. FUSING	REQM. CONDUIT
240VDC	228.6A	250A	35,000	350CM-6 GA.	275 IN/LBS	250 MCM	275A	2"

3Ø INPUT/1Ø OUTPUT UPS
FUNCTIONAL BLOCK DIAGRAM

DATE: 2/2/78
DESIGN: 2/2/78
SCALE: 2/2/78

DESIGNER: [Signature]
CHECKED: [Signature]
APPD: [Signature]

POWER SYSTEMS, INC.
ELMWOOD 44035-2714

1S404824LF_90449
SHEET 1 OF 1
ISSUE 1