

[1250] 49.25

[800] 31.5

[450]  
17.75

[762]  
30.0

STANDARD DISPLAY



CIRCUIT BREAKER  
STATUS DISPLAY



65.0  
[1650]

Notes: Unless otherwise specified, dimensions are in inches. Dimensions within brackets [ ] are in millimeters.

Recommended clearance for serviceability is 36" [914] in the front and 6" [152] on the remaining sides.

**LTI Power Systems, Inc.**

TEL. (440) 327-5050

10800 Middle Ave. Elyria, Ohio 44035

ProUPS B1250 ENCLOSURE  
40KVA

40KVA WEIGHT W/SKID: 1700 LBS. (771 kg)

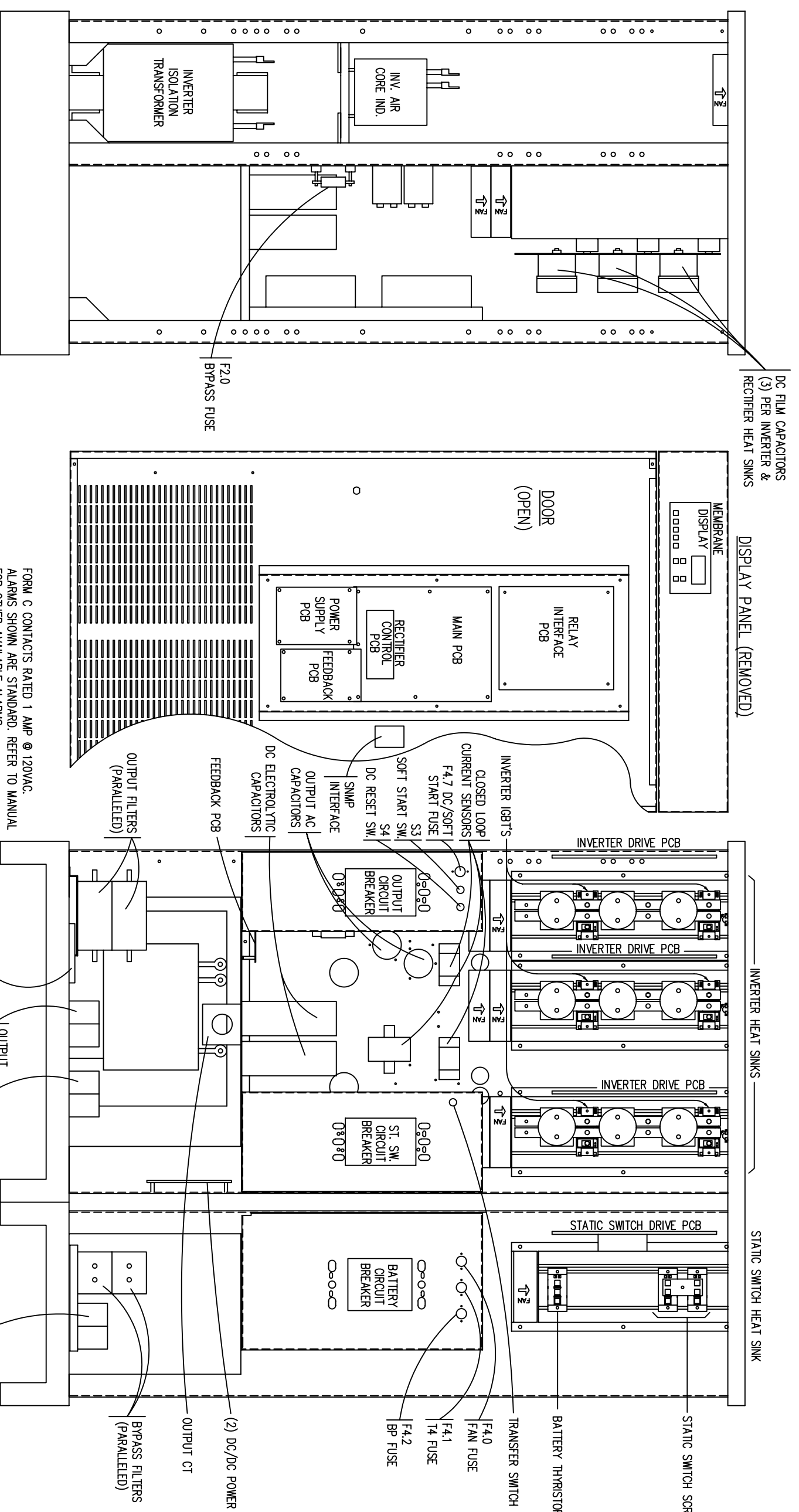
LTI-ProUPS

CAD DWG NAME: B1250CAB\_40KVA\_INV\_110342

REV.

1

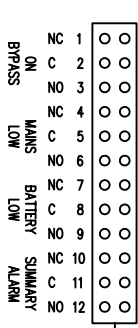
REV.	CHG. BY	DATE	DESCRIPTION



LEFT SIDE

FRONT

FORM C CONTACTS RATED 1 AMP @ 120VAC.  
ALARMS SHOWN ARE STANDARD. REFER TO MANUAL  
FOR OTHER AVAILABLE ALARMS.



COMPONENT LOCATION DRAWING

FOR  
40KVA, 120V OUTPUT  
125VDC INVERTER SYSTEM

UNLESS OTHERWISE SPECIFIED DIMENSIONS ARE IN MILLIS TOLERANCE ON SCALE  
FRACTIONS +/- 1/32 DECIMALS +/- 0.031 ANGLES +/- 1.5°

DESIGN	DATE
DRAWN	DATE
CHKD	DATE
APPD	DATE



POWER SYSTEMS, INC.  
ELYRIA, OHIO 44035-7822

40H12F

SHEET 1 OF 1  
ISSUE 1

1 2 3 4 5 6 7 8 9

H

G

F

E

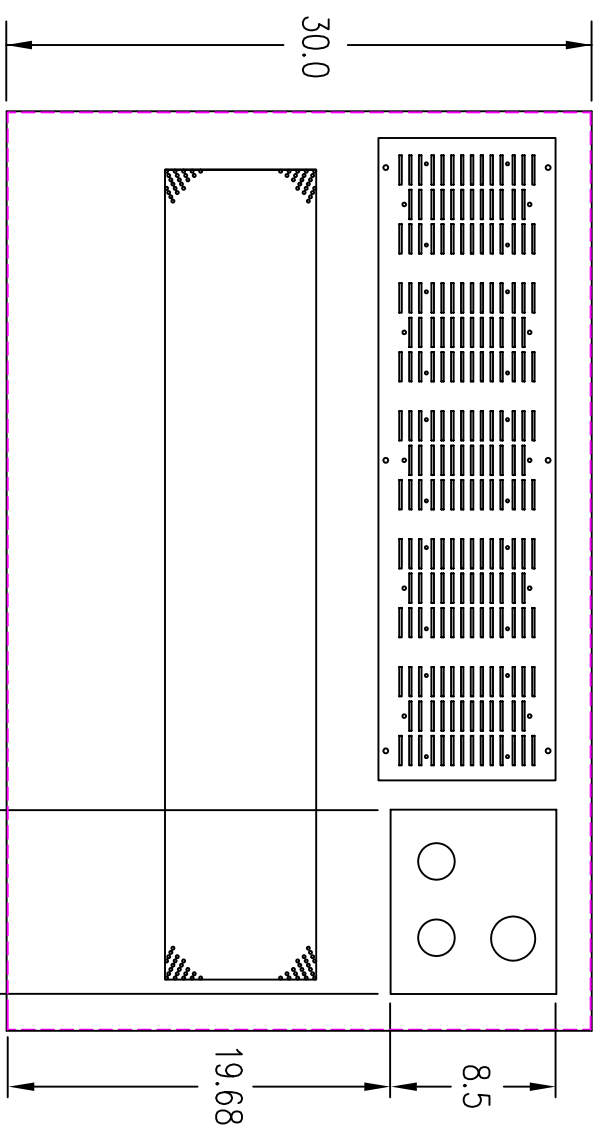
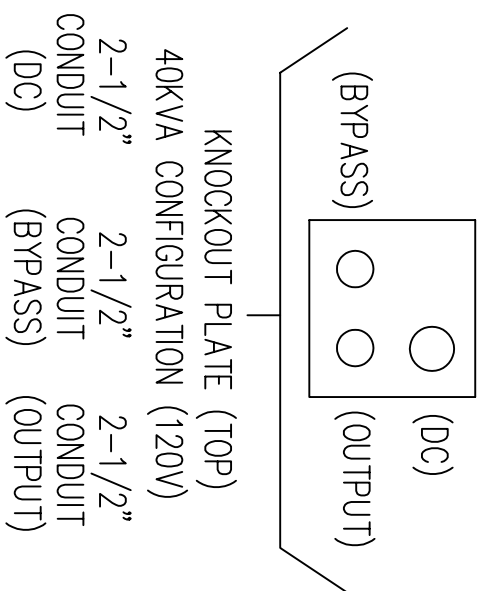
D

C

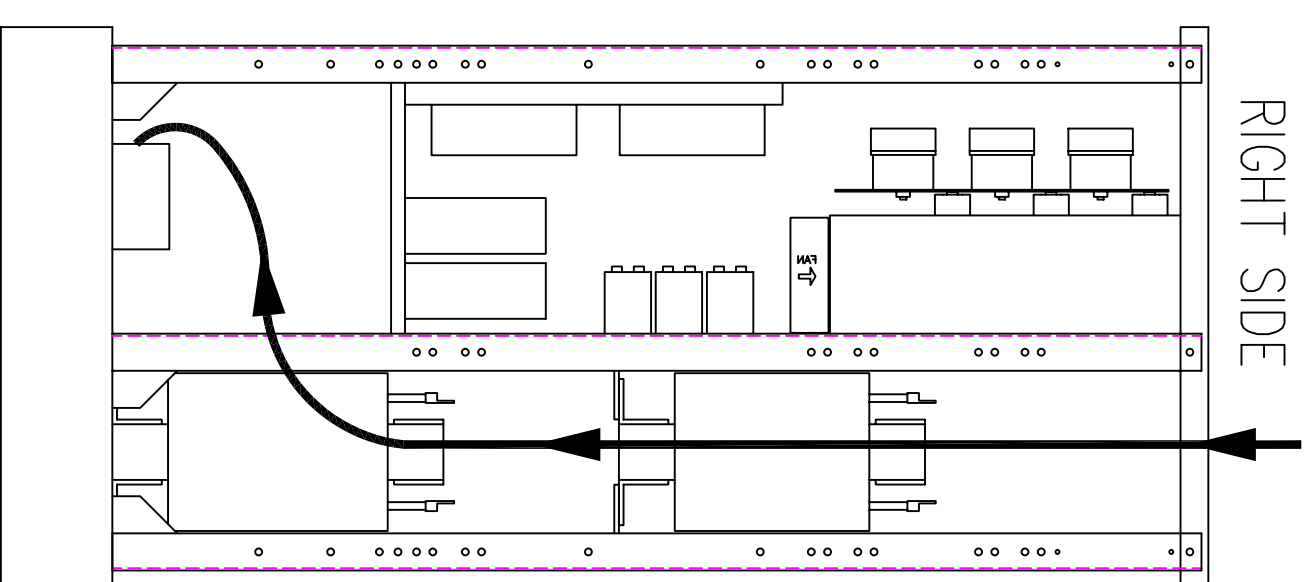
B

A

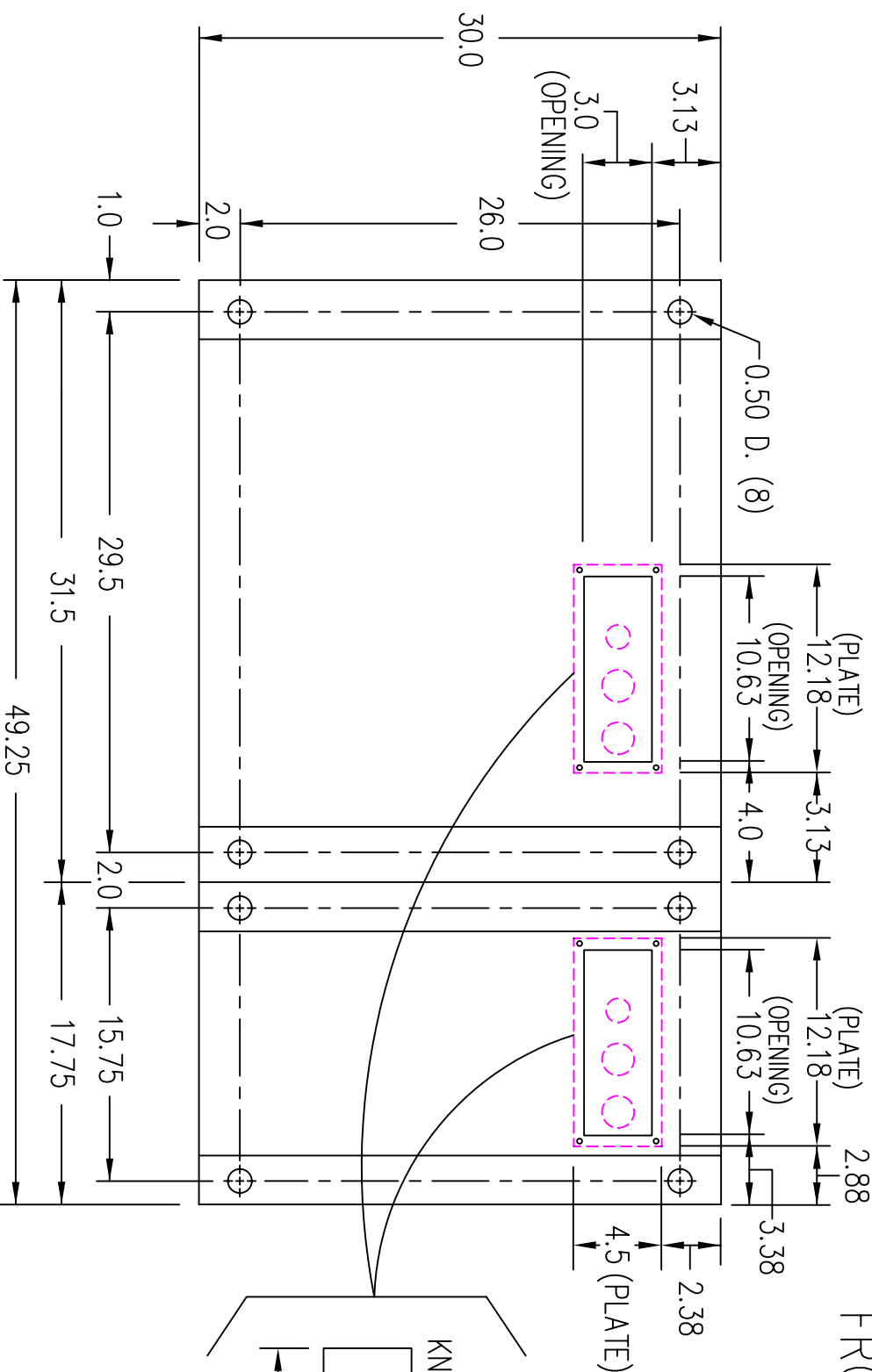
(VIEW FROM TOP OF CABINET)



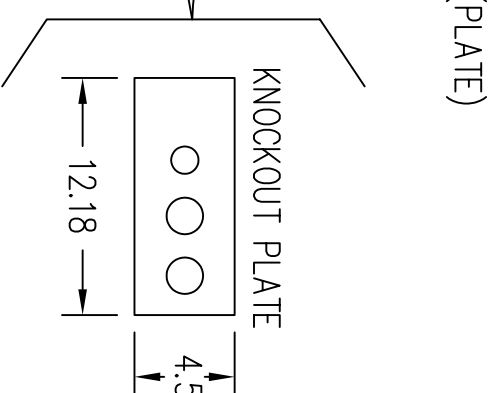
RIGHT SIDE



FRONT



FRONT



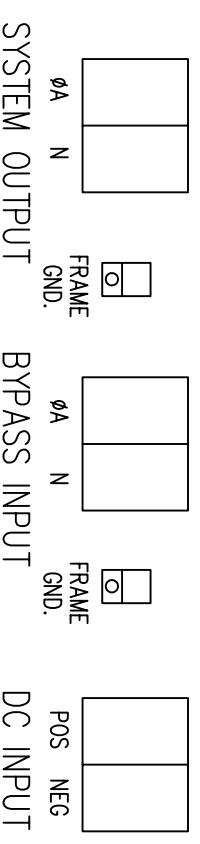
FOR TOP CABLE ENTRY, ROUTE WIRES DOWN RIGHT SIDE THROUGH OPEN AREA OF UPRIGHT CENTER PANEL TO TERMINALS LOCATED ON BASE PANEL.

TERMINATION CONFIGURATION (BOTTOM, FRONT)

TERMINAL BLOCK CAPACITY (BYPASS/AC OUTPUT): (2) 500 MCM TO (2) 4 GA.

TERMINAL BLOCK CAPACITY (DC INPUT): (2) 500 MCM TO (2) 4 GA.

FRAME GROUND CAPACITY : 250 MCM TO 6 GA.



NOTE: ALL DIMENSIONS ARE IN INCHES UNLESS OTHERWISE SPECIFIED.

(VIEW FROM BOTTOM OF CABINET)

**LTI Power Systems, Inc.**

40KVA INVERTER ASSEMBLY

LTI-ProUPS

REV.

