

Notes: Unless otherwise specified, dimensions are in inches. Dimensions within brackets [] are in millimeters.
Recommended clearance for serviceability is 36" [914] in the front and 6" [152] on the remaining sides.

LTI Power Systems, Inc.

TEL. (440) 327-5050

10800 Middle Ave. Elyria, Ohio 44035

ProUPS B1250 ENCLOSURE
40KVA

40KVA WEIGHT W/SKID: 1700 LBS. (771 kg)

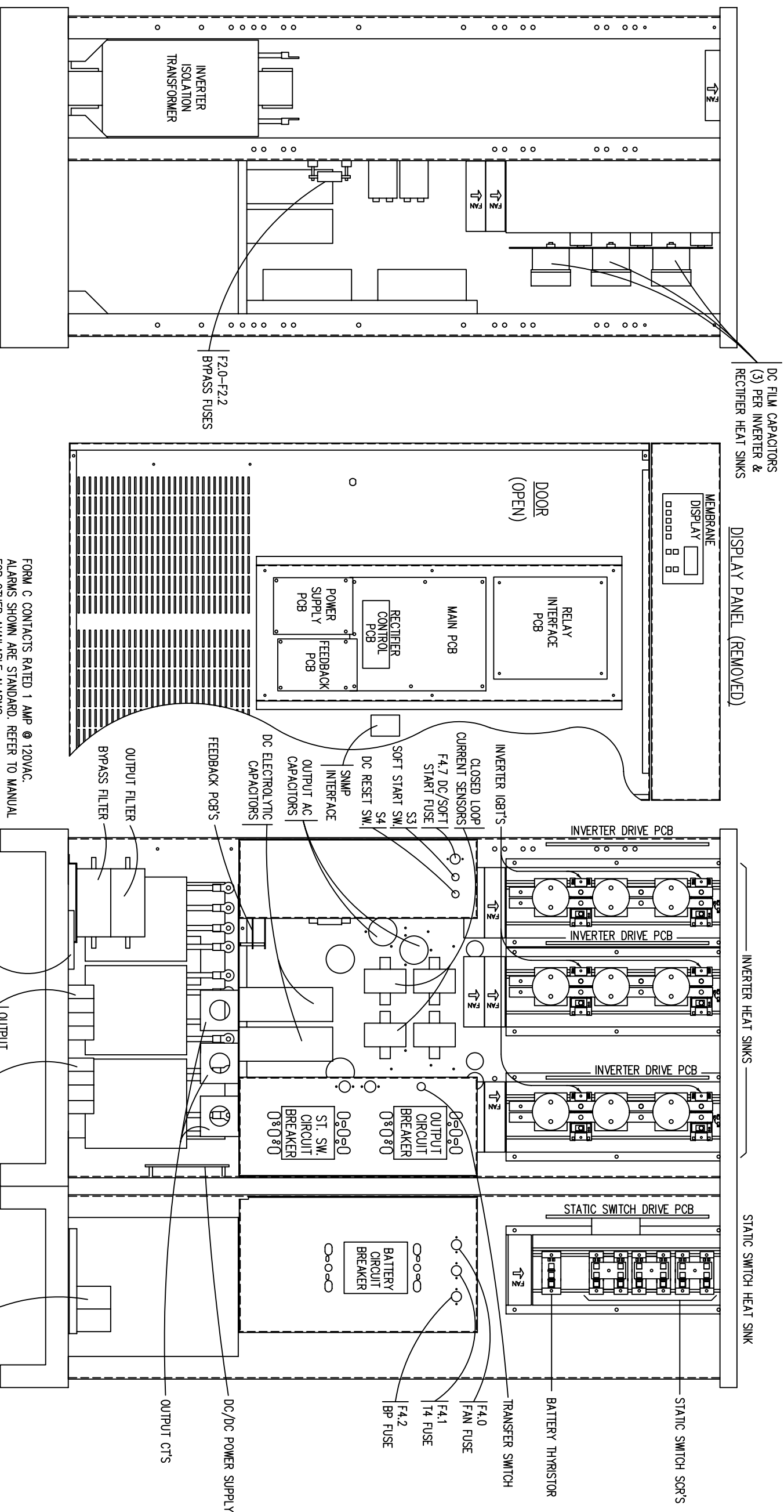
LTI-ProUPS

CAD DWG NAME: B1250CAB_40KVA_INV

REV.

1

REV	CHG BY	DATE	DESCRIPTION



LEFT SIDE

FRONT

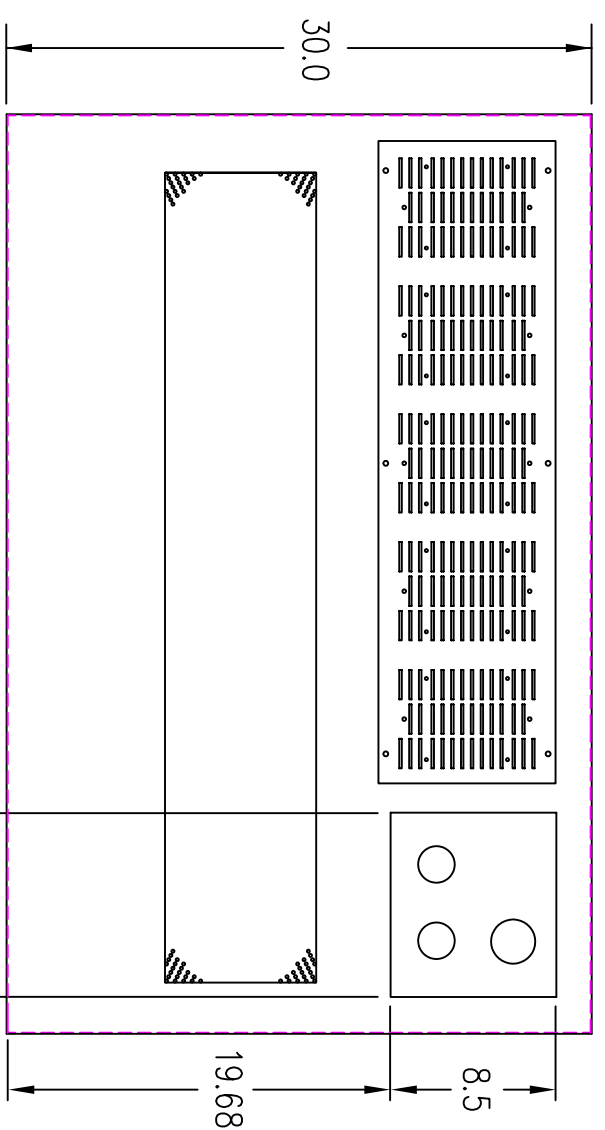
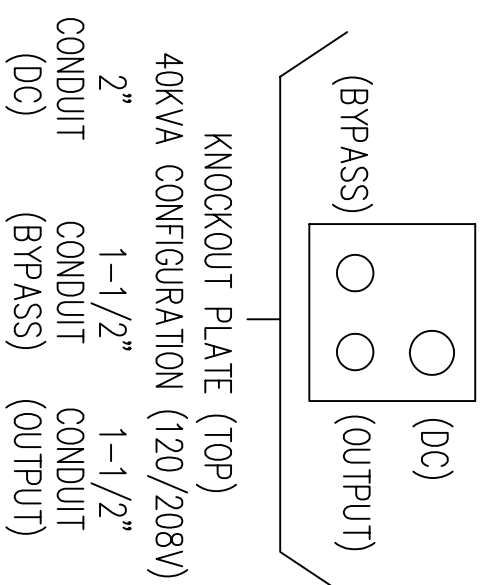
FORM C CONTACTS RATED 1 AMP @ 120VAC.
ALARMS SHOWN ARE STANDARD. REFER TO MANUAL
FOR OTHER AVAILABLE ALARMS.

1 2 3 4 5 6 7 8 9

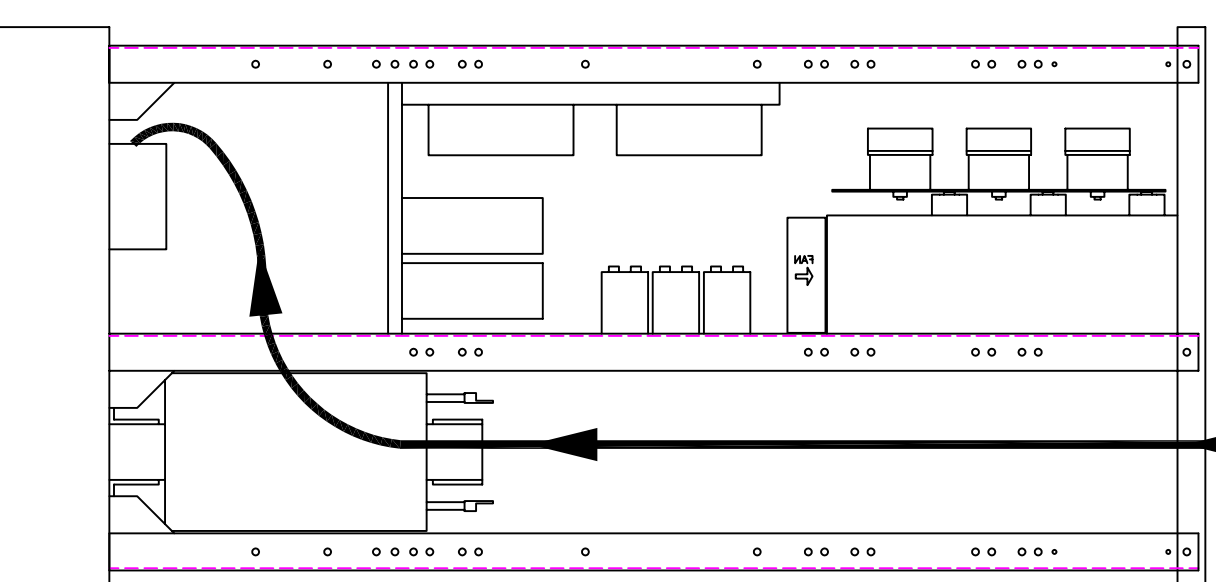
COMPONENT LOCATION DRAWING		FOR	
40KVA, 120/208V OUTPUT	125VDC INVERTER SYSTEM	DATE	
UNLESS OTHERWISE SPECIFIED DIMENSIONS ARE IN INCHES TOLERANCE ON SCALE		DATE	
FRACTIONS +/- 1/32 DECIMALS +/- 0.031 ANGLES +/- 1.5°		DATE	
DESIGN		DATE	
DRAWN		DATE	
WALLACE		DATE	
CHKD		DATE	
APPD		DATE	
POWER SYSTEMS, INC.		40H20F	
ELYRIA, OHIO 44035-7822		SHEET 1 OF 1	
		ISSUE 1	

G F E D C B A

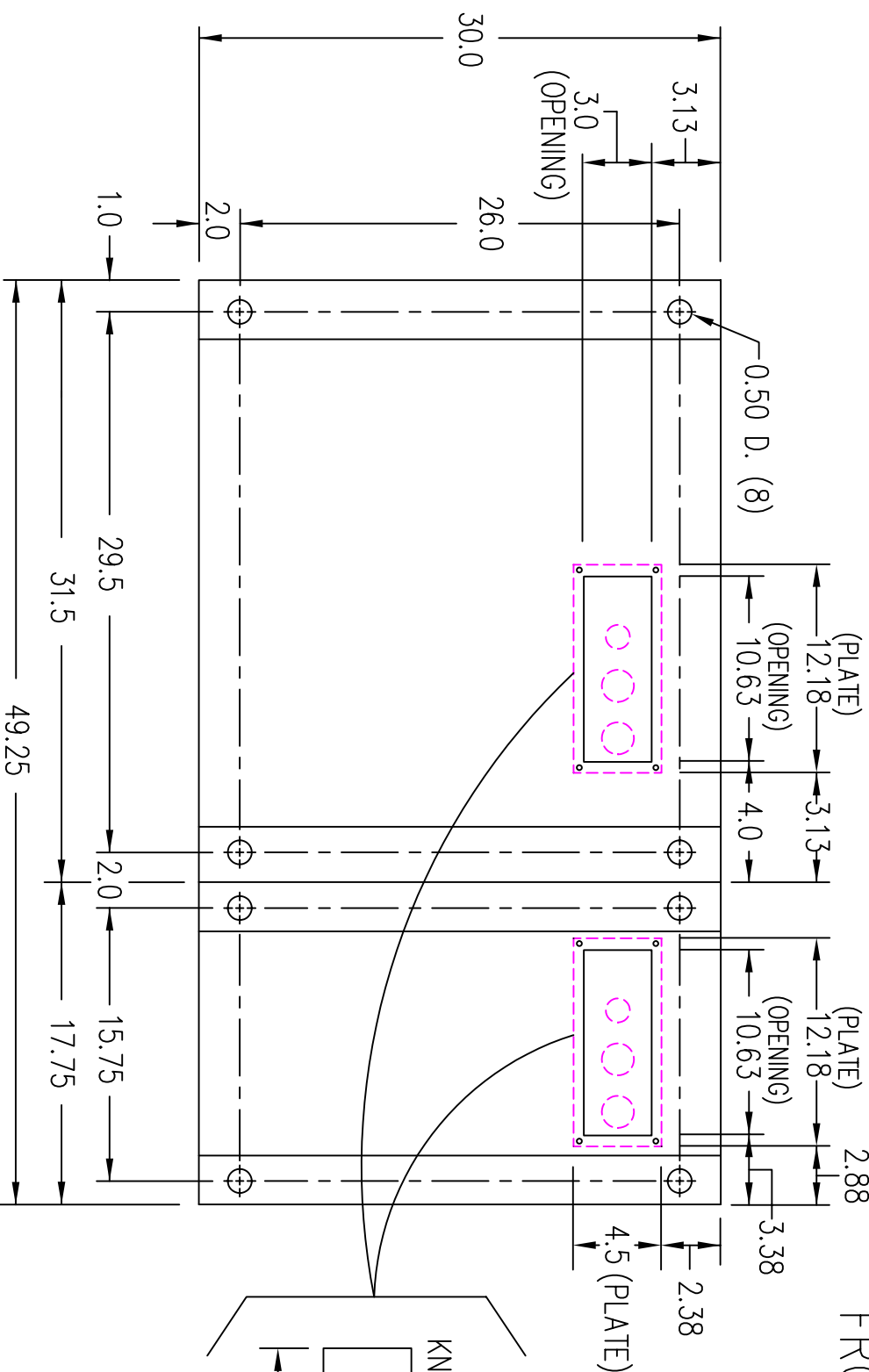
(VIEW FROM TOP OF CABINET)



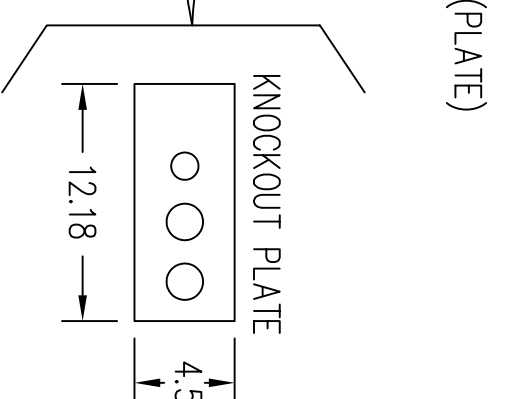
RIGHT SIDE



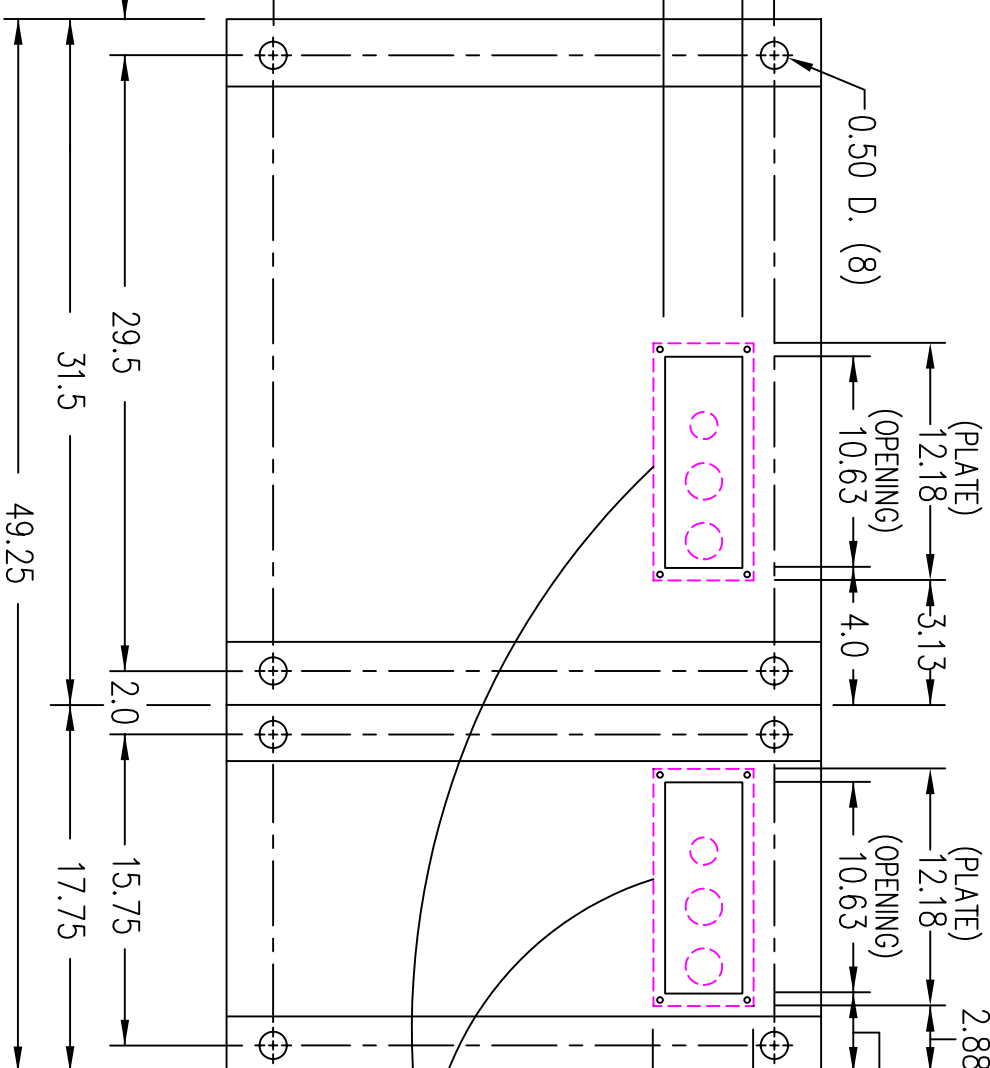
FRONT



FRONT



(VIEW FROM BOTTOM OF CABINET)



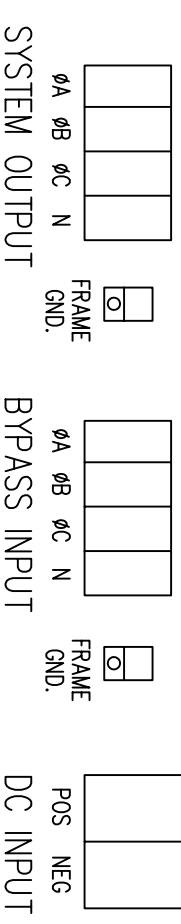
FOR TOP CABLE ENTRY, ROUTE WIRES DOWN RIGHT SIDE THROUGH OPEN AREA OF UPRIGHT CENTER PANEL TO TERMINALS LOCATED ON BASE PANEL.

TERMINATION CONFIGURATION (BOTTOM, FRONT)

TERMINAL BLOCK CAPACITY (BYPASS INPUT/AC OUTPUT): 14 TO 2/0 GA.

TERMINAL BLOCK CAPACITY (DC INPUT): (2) 500 MCM TO (2) 4 GA.

FRAME GROUND CAPACITY : 1/0 GA. TO 14 GA.



NOTE: ALL DIMENSIONS ARE IN INCHES UNLESS OTHERWISE SPECIFIED.

LTI Power Systems, Inc.

40KVA INVERTER ASSEMBLY

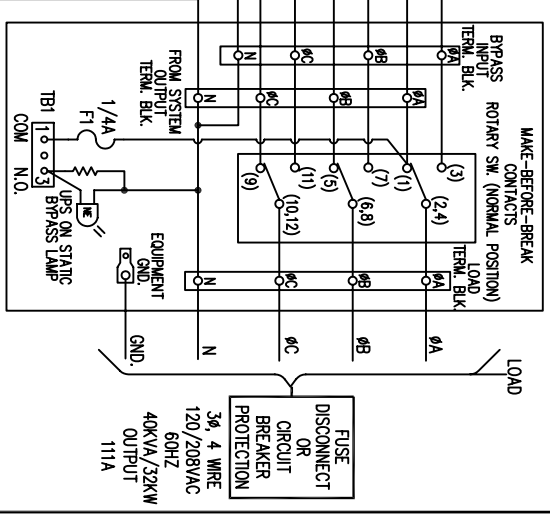
LTI-ProUPS

REV.

BYPASS INPUT/AC OUTPUT 120/208V	MAX. CURRENT 111A	BRKR. RATING 125A	A.I.C. RATING 25,000	TERM. CAPACITY 14-2/0 AWG	TORQUE 50 IN/LBS	RECM. SIZE 1 AWG	RECM. FUSING 150A	RECM. GND. SIZE 6 AWG	RECM. CONDUIT 1-1/2"
DC INPUT 120V	MAX. CURRENT 457A	BRKR. RATING 480A	A.I.C. RATING 35,000	TERM. CAPACITY (2)500MCM (-)24 AWG 275 IN/LBS (2) 4/0 AWG	TORQUE (2) 4/0 AWG	RECM. SIZE 500A	RECM. FUSING 2/0 AWG	RECM. GND. SIZE 2"	

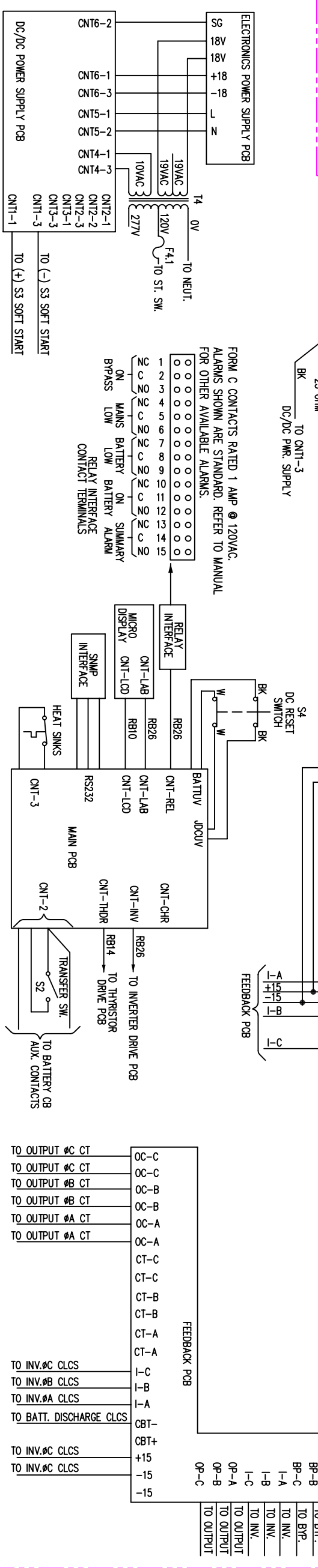
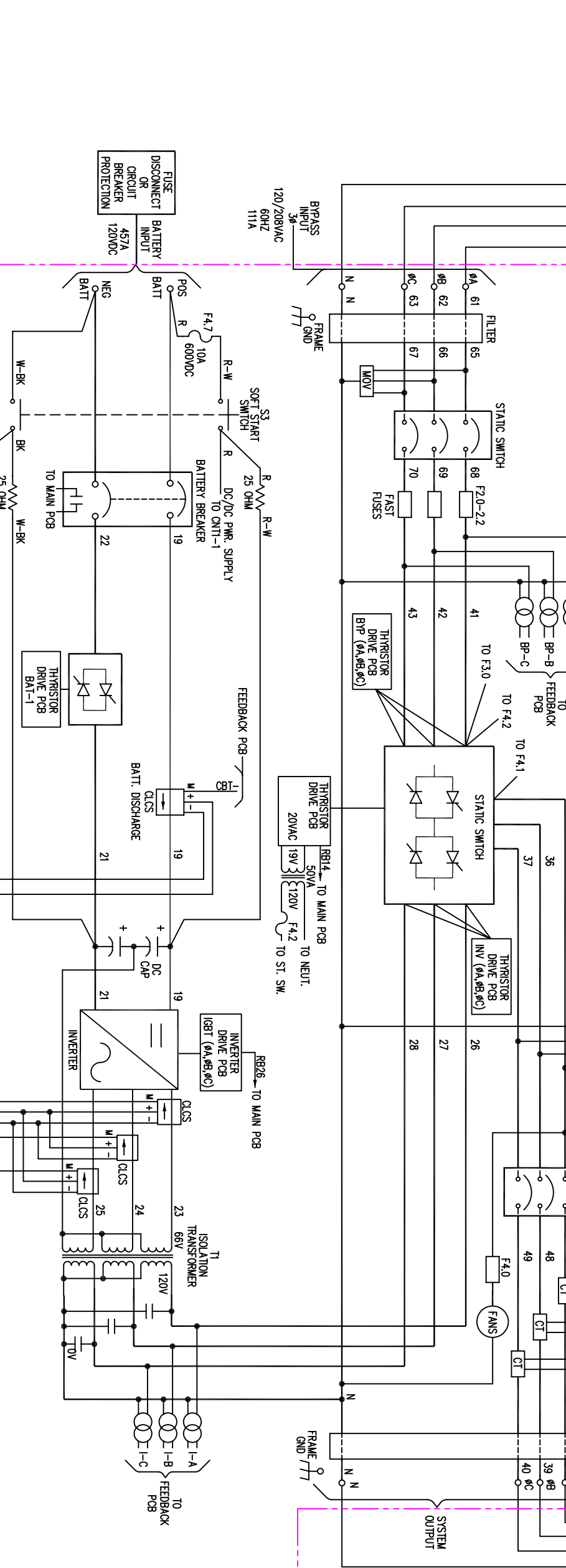
- NOTES:
1. WIRE SIZES BASED ON 90°C COPPER CONDUCTORS OPERATING IN 30°C AMBIENT AND NEC TABLES 250-95 AND 310-16. INCREASE CONDUCTOR SIZE FOR LONG RUNS.
 2. CLOCKWISE PHASE ROTATION MUST BE OBSERVED FOR BYPASS INPUT.
 3. CLCS = CLOSED LOOP CURRENT SENSOR

4232-903
BYPASS ENCLOSURE



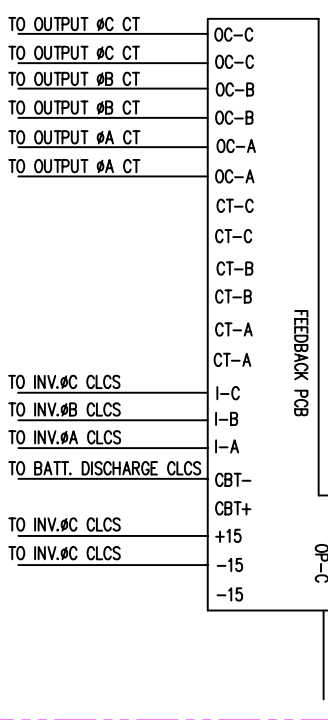
FUSE DISCONNECT OR CIRCUIT BREAKER PROTECTION
3# 4 WIRE 120/208VAC 60HZ 40KVA/32KW OUTPUT 111A

5182-640
INVERTER SYSTEM



FORM C CONTACTS RATED 1 AMP @ 120VAC.
ALARMS SHOWN ARE STANDARD. REFER TO MANUAL FOR OTHER AVAILABLE ALARMS.

RELAY INTERFACES:
ON MAINS BATTERY LOW BATTERY ALARM
ON SUMMARY BATTERY LOW BATTERY ALARM

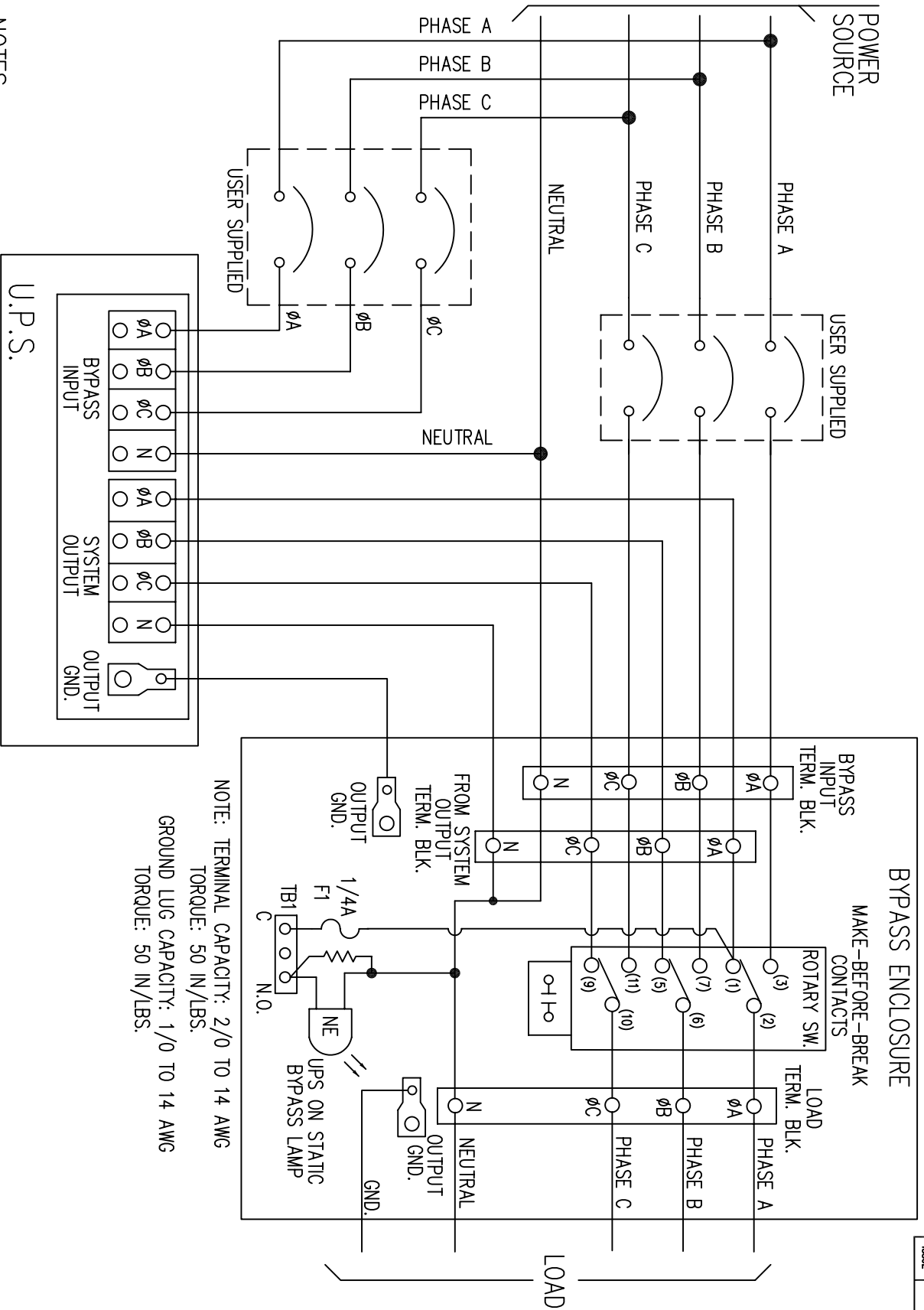


3# INPUT/2# OUTPUT INVERTER
FUNCTIONAL BLOCK DIAGRAM
SCALE

DESIGN	DATE
REVISED	DATE
APPROVED	DATE

POWER SYSTEMS, INC.
ELECTRONIC 4232-2214

ISSUE 1
SHEET 1 OF 1



NOTE: TERMINAL CAPACITY: 2/0 TO 14 AWG
 TORQUE: 50 IN/LBS.
 GROUND LUG CAPACITY: 1/0 TO 14 AWG
 TORQUE: 50 IN/LBS.

NOTES:

1. OBSERVE ALL PHASING WHEN CONNECTING EXTERNAL SWITCH CONTACTS.
2. EXTERNAL ROTARY SWITCH ENCLOSURE: NEMA TYPE 1, 18"L x 18"W x 10"D.
3. DO NOT OPERATE THE ROTARY SWITCH TO BYPASS POSITION WITH THE "UPS" DE-ENERGIZED.
4. NORMAL- THE UPS SUPPLYING THE LOAD.
 BYPASS- THE HARD BYPASS SOURCE SUPPLYING THE LOAD.
5. REMOVE BLANK COVER PANEL TO ACCESS TERMINAL CONNECTIONS.

DESIGN		DATE		150A THREE PHASE OUTPUT PROUPS SERIES EXTERNAL MAINTENANCE BYPASS SWITCH	
DRAWN	WALLACE	DATE	10-17-09	IC4232-903	
CHKD		DATE	10-17-09	SHEET 1 OF 1	ISSUE 1
APP'D	RAMOROS	DATE	10-17-09		