

Notes: Unless otherwise specified, dimensions are in inches. Dimensions within brackets [] are in millimeters.
 Recommended clearance for serviceability is 36" [914] in the front and 6" [152] on the remaining sides.

LTI Power Systems, Inc.

ProUPS B2050 ENCLOSURE
 50KVA

50KVA WEIGHT W/SKID: 3200 LBS. (1440 kg)

LTI-ProUPS

TEL. (440) 327-5050

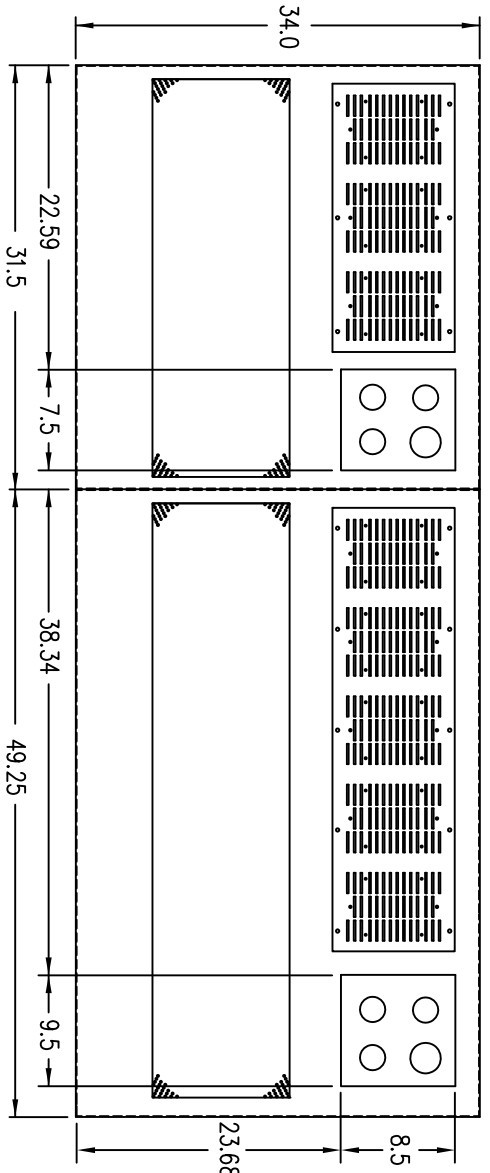
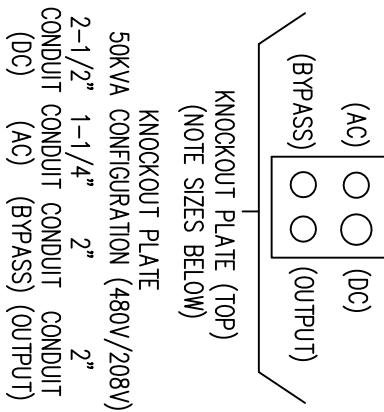
10800 Middle Ave. Elyria, Ohio 44035

CAD DWG NAME: B2050CAB_504820HD_451D_120353

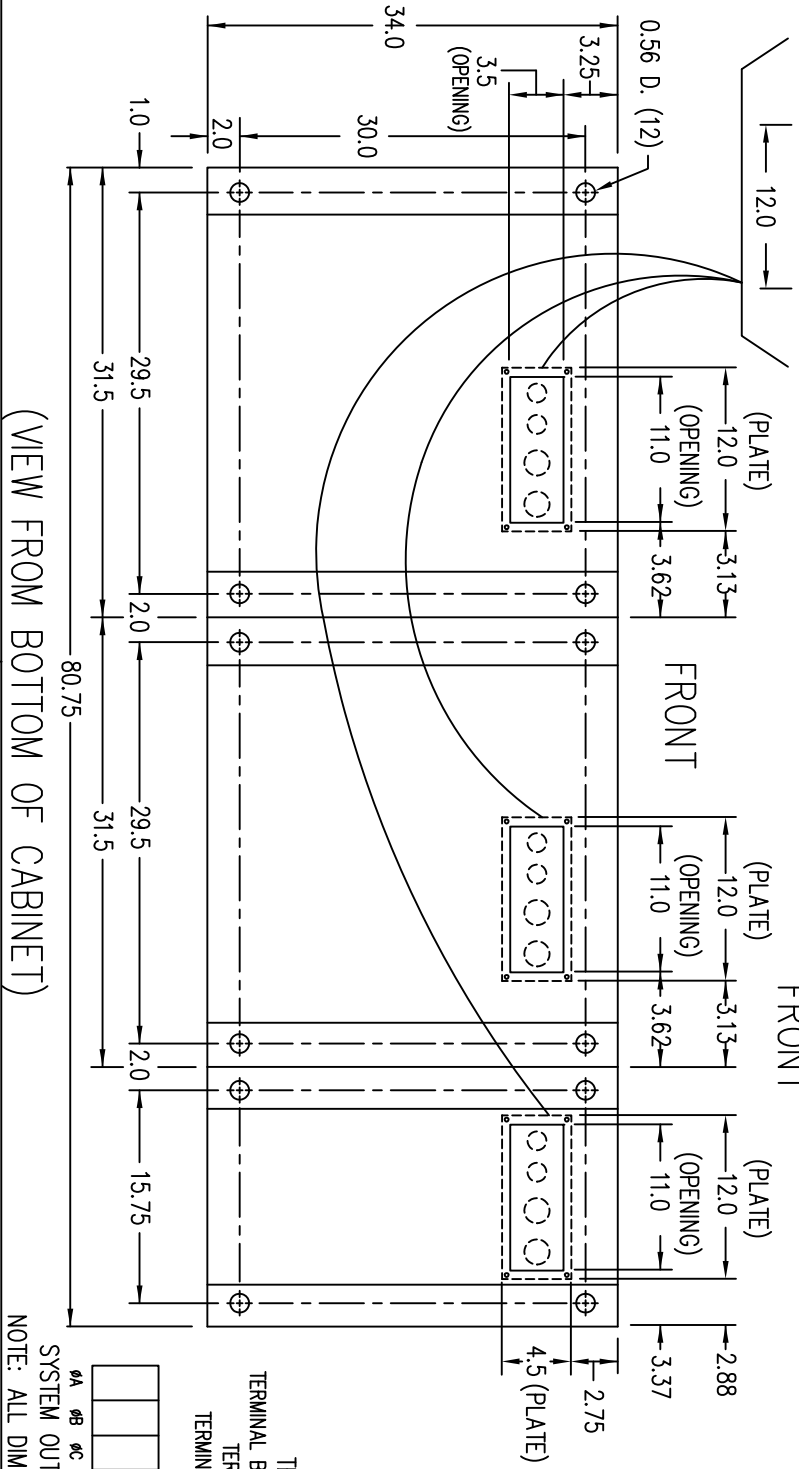
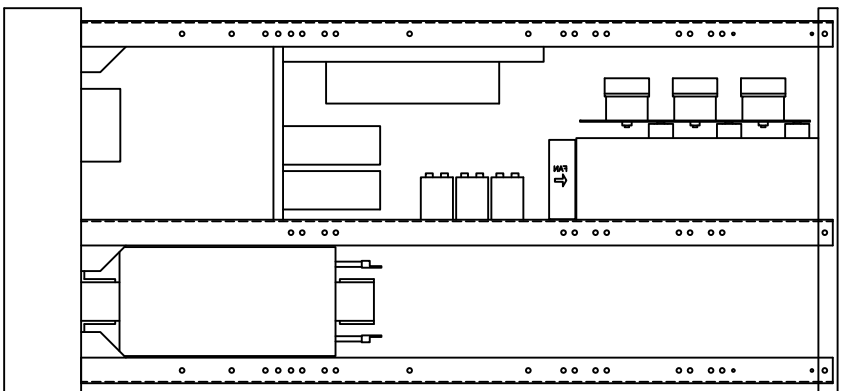
REV.

1

(VIEW FROM TOP OF CABINET)



RIGHT SIDE



(VIEW FROM BOTTOM OF CABINET)

TERMINATION CONFIGURATION (BOTTOM, FRONT)

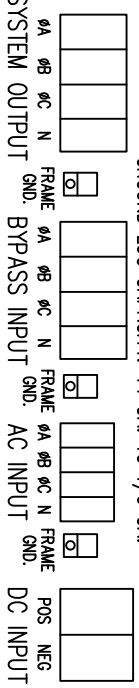
TERMINAL BLOCK CAPACITY (BYPASS INPUT/AC OUTPUT): 6 GA. TO 350 MCM

TERMINAL BLOCK CAPACITY (AC INPUT): 14 GA. TO 2/0 GA.

TERMINAL BLOCK CAPACITY (DC INPUT): (2) 500 MCM TO (2) 4 GA.

GROUND LUG CAPACITY: 14 GA. TO 1/0 GA.

NOTE: ALL DIMENSIONS ARE IN INCHES UNLESS OTHERWISE SPECIFIED.



LTI Power Systems, Inc.

50KVA ASSEMBLY

LTI-ProUPS

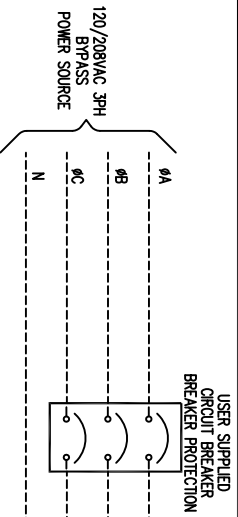
TEL. (440) 327-5050

10800 Middle Ave. Bldg. B Elyria, Ohio 44035

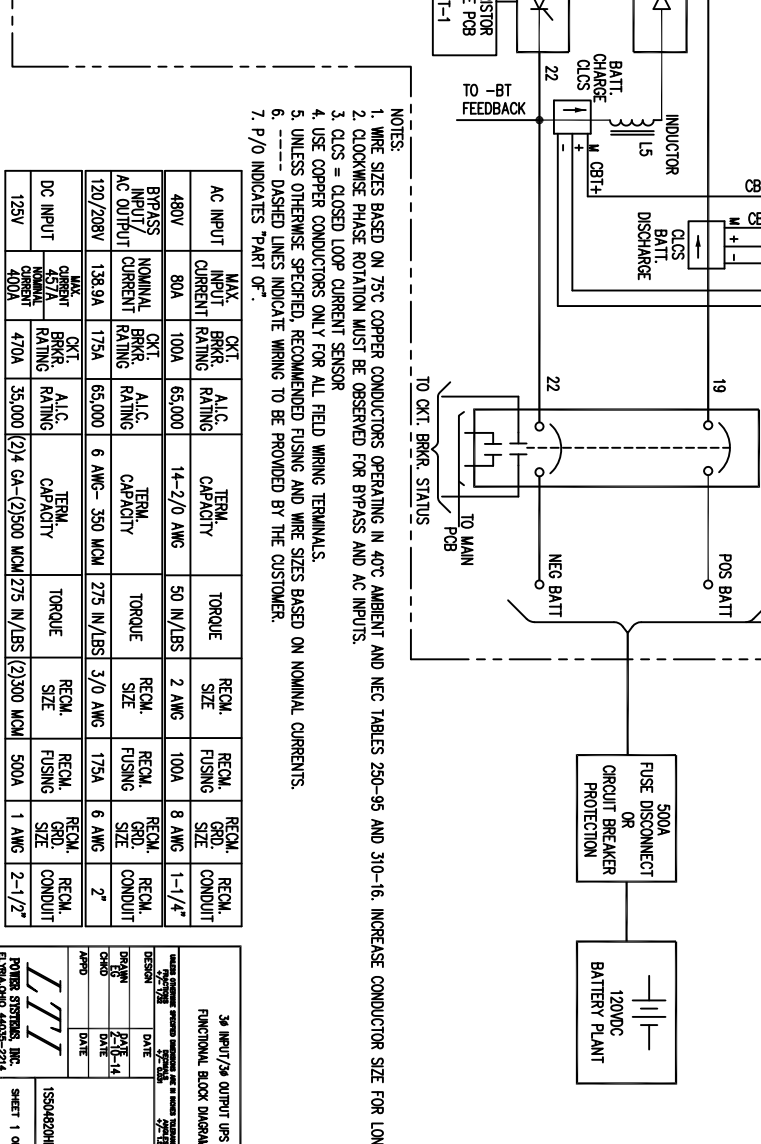
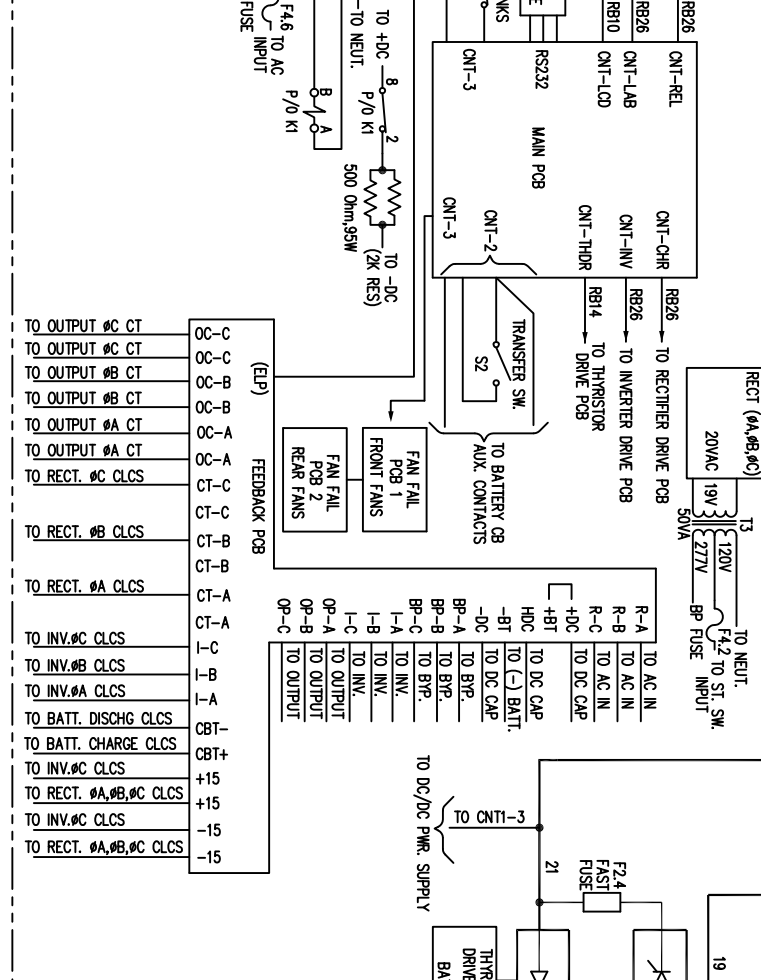
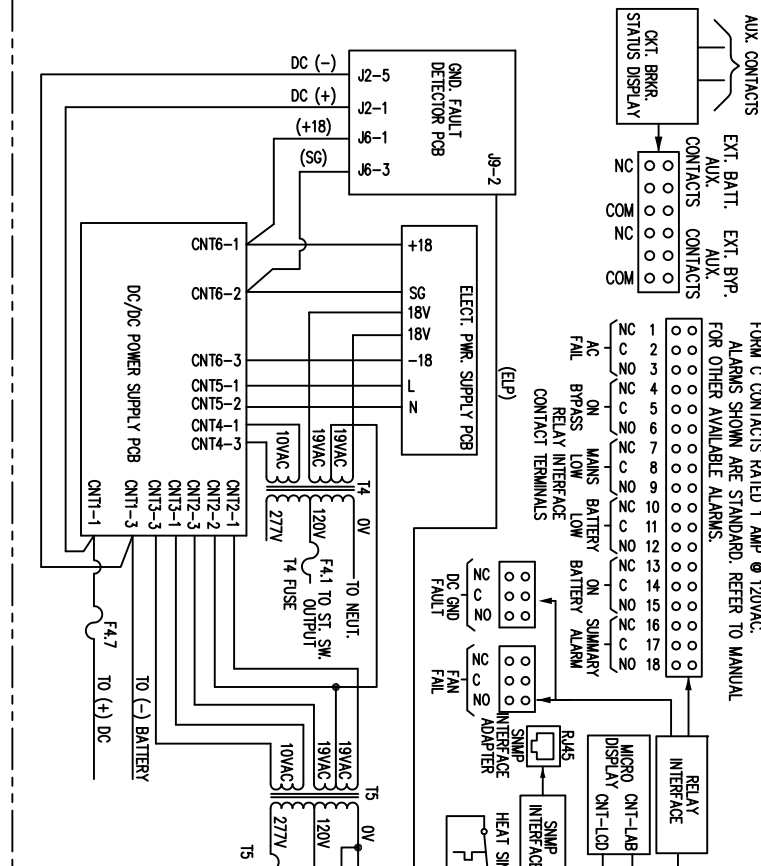
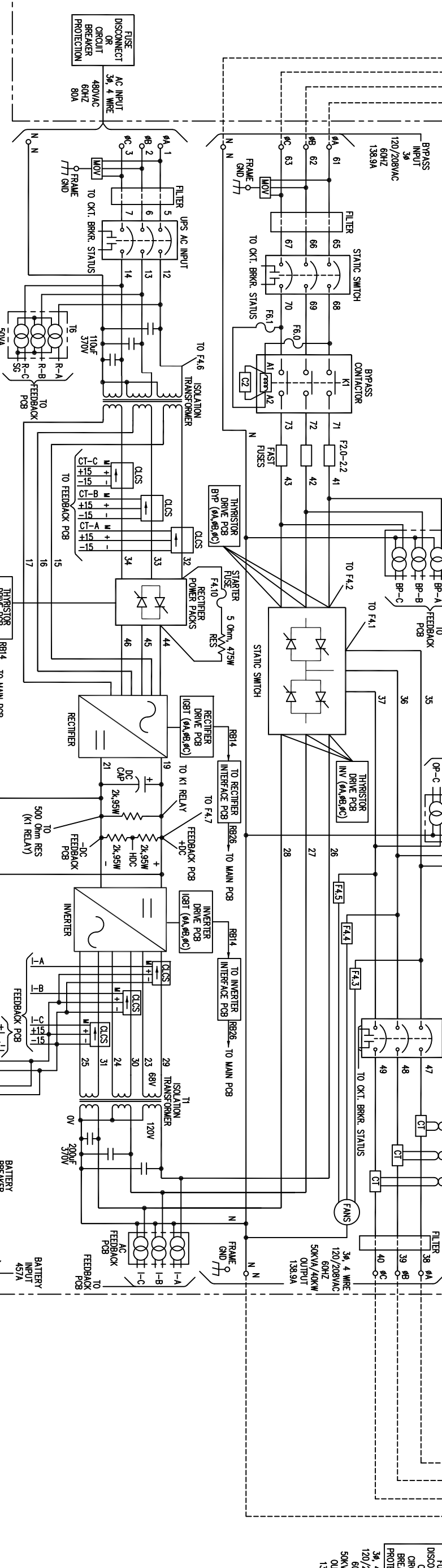
SHEET 1 OF 1

CAD DWG NAME: 504820HD_BASE

REV. 1



5182-451D 50KVA UPS

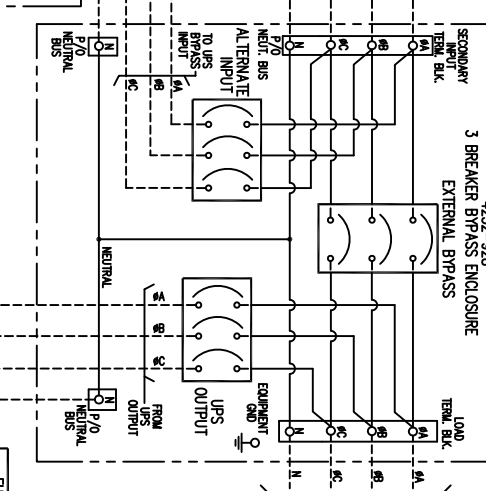


- NOTES:
1. WIRE SIZES BASED ON 75°C COPPER CONDUCTORS OPERATING IN 40°C AMBIENT AND NEC TABLES 250-95 AND 310-16. INCREASE CONDUCTOR SIZE FOR LONG RUNS.
 2. CLOCKWISE PHASE ROTATION MUST BE OBSERVED FOR BYPASS AND AC INPUTS.
 3. CLCS = CLOSED LOOP CURRENT SENSOR
 4. USE COPPER CONDUCTORS ONLY FOR ALL FIELD WIRING TERMINALS.
 5. UNLESS OTHERWISE SPECIFIED, RECOMMENDED FUSING AND WIRE SIZES BASED ON NOMINAL CURRENTS.
 6. DASHED LINES INDICATE WIRING TO BE PROVIDED BY THE CUSTOMER.
 7. P/O INDICATES PART OF.

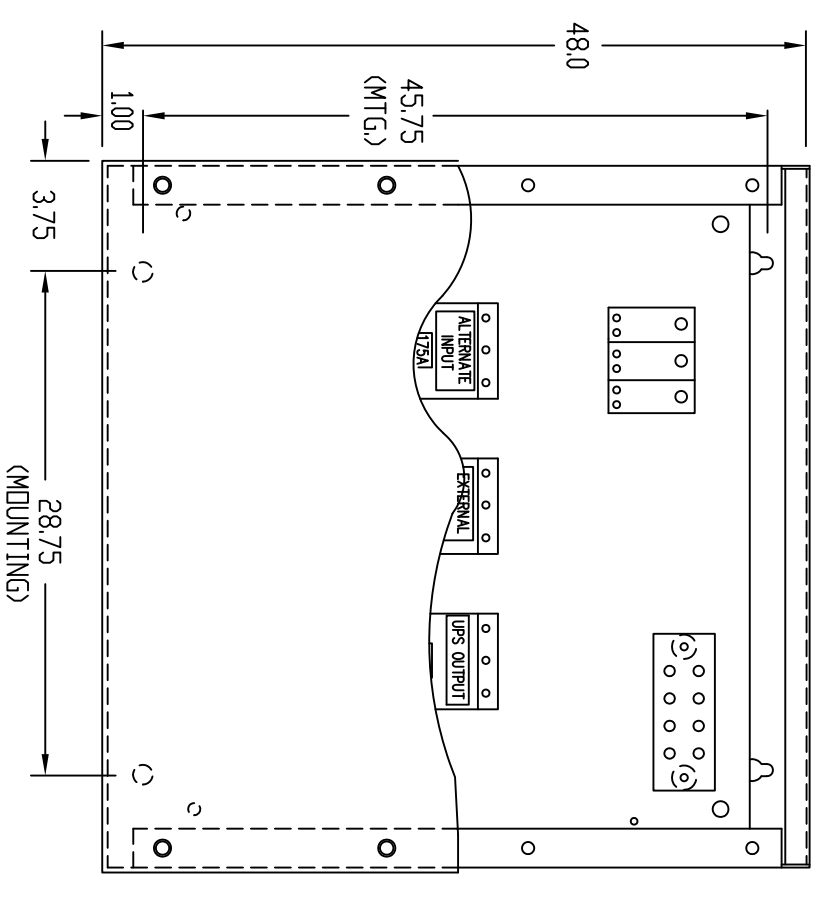
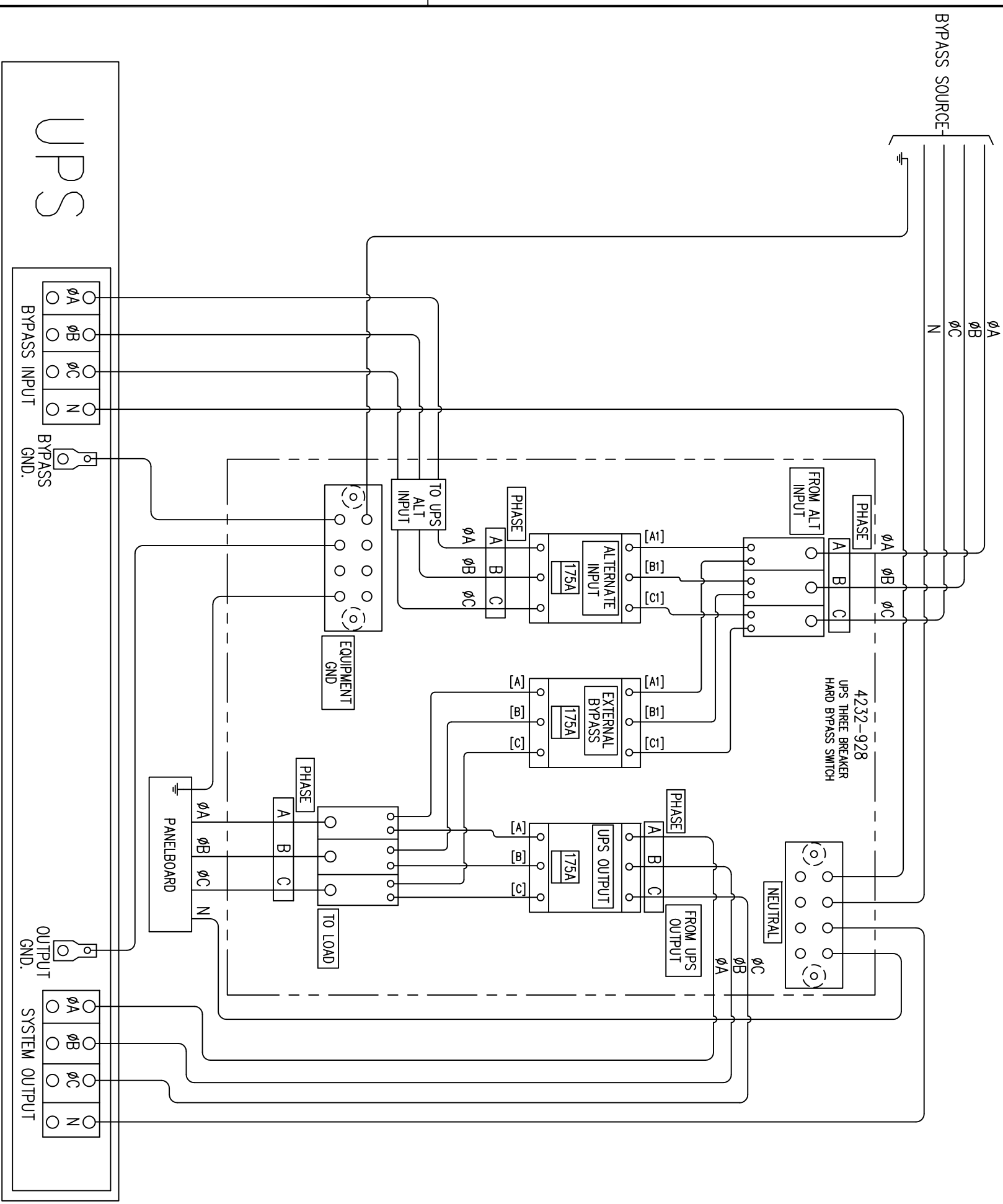
AC INPUT	MAX. INPUT CURRENT RATING	OCT. BRKR. RATING	A.I.C. RATING	TERM. CAPACITY	TORQUE	RECOM. SIZE	RECOM. FUSING	RECOM. GND. SIZE	RECOM. CONDUIT
480V	80A	100A	65,000	14-2/0 AWG	50 IN/LBS	2 AWG	100A	8 AWG	1-1/4"
BYPASS INPUT									
NOMINAL AC OUTPUT									
120/208V	138.9A	175A	65,000	6 AWG - 350 MCM	275 IN/LBS	3/0 AWG	175A	6 AWG	2"
DC INPUT									
125V									

3A INPUT/29 OUTPUT UPS
FUNCTIONAL BLOCK DIAGRAM

POWER SYSTEMS, INC.
1550429ND 2/14/04
SHEET 1 OF 1



REVISIONS			
ISS. NO.	CHG. BY	DATE	DESCRIPTION
1			NEW



BYPASS ENCLOSURE
 (FRONT-VIEW FROM FRONT)
 (BLANK COVER PANEL REMOVED)
 MOUNTING HOLES LOCATED ON BOTTOM SURFACE OF
 ENCLOSURE AND ARE DESIGNED FOR 5/16" HARDWARE.

NOTES:

1. CLOCKWISE PHASE ROTATION MUST BE OBSERVED FOR BYPASS INPUT.
 2. ALTERNATE INPUT- APPLIES BYPASS POWER TO THE UPS BYPASS INPUT
- EXTERNAL BYPASS- THE HARD BYPASS SOURCE IS SUPPLYING THE LOAD.
 UPS OUTPUT- THE UPS IS SUPPLYING THE LOAD THROUGH THE STATIC SWITCH.

INSTALLATION DRAWING			
FOR			
4232-928 UPS THREE BREAKER	DATE	SCALE	
HARD BYPASS SWITCH	4-17-13		
UNLESS OTHERWISE SPECIFIED DIMENSIONS ARE IN INCHES TOLERANCE ON FRACTIONS +/- 1/32 DECIMALS +/- 0.031 ANGLES +/- .15			
DESIGN	DATE		
DRAWN	DATE		
WALLACE	4-17-13		
CHKD	DATE		
APPD	DATE		

POWER SYSTEMS, INC.
 ELVIRA, OHIO 44035-7822

IC4232-928
 SHEET 1 OF 1
 ISSUE 1

1 2 3 4 5 6 7 8 9