

65.0  
[1650]

Notes: Unless otherwise specified, dimensions are in inches. Dimensions within brackets [ ] are in millimeters.  
Recommended clearance for serviceability is 36" [914] in the front and 6" [152] on the remaining sides.

**LTI Power Systems, Inc.**

TEL. (440) 327-5050

10800 Middle Ave. Elyria, Ohio 44035

ProUPS B1250 ENCLOSURE  
50KVA

50KVA WEIGHT W/SKID: 2870 LBS. (1292 kg)

LTI-ProUPS

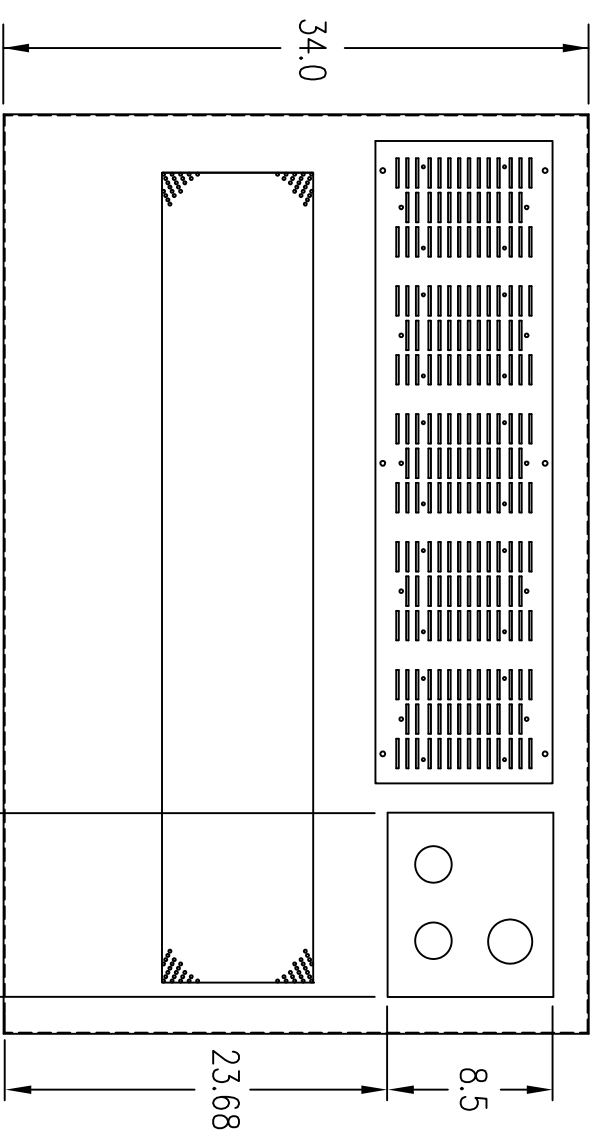
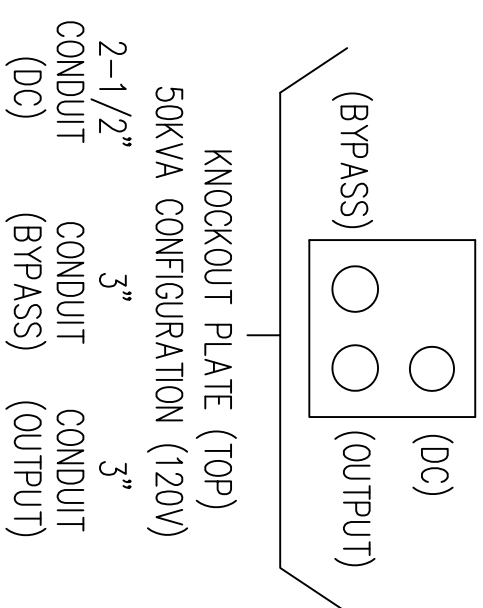
CAD DWG NAME: B1250CAB\_50H12D\_751D

REV.

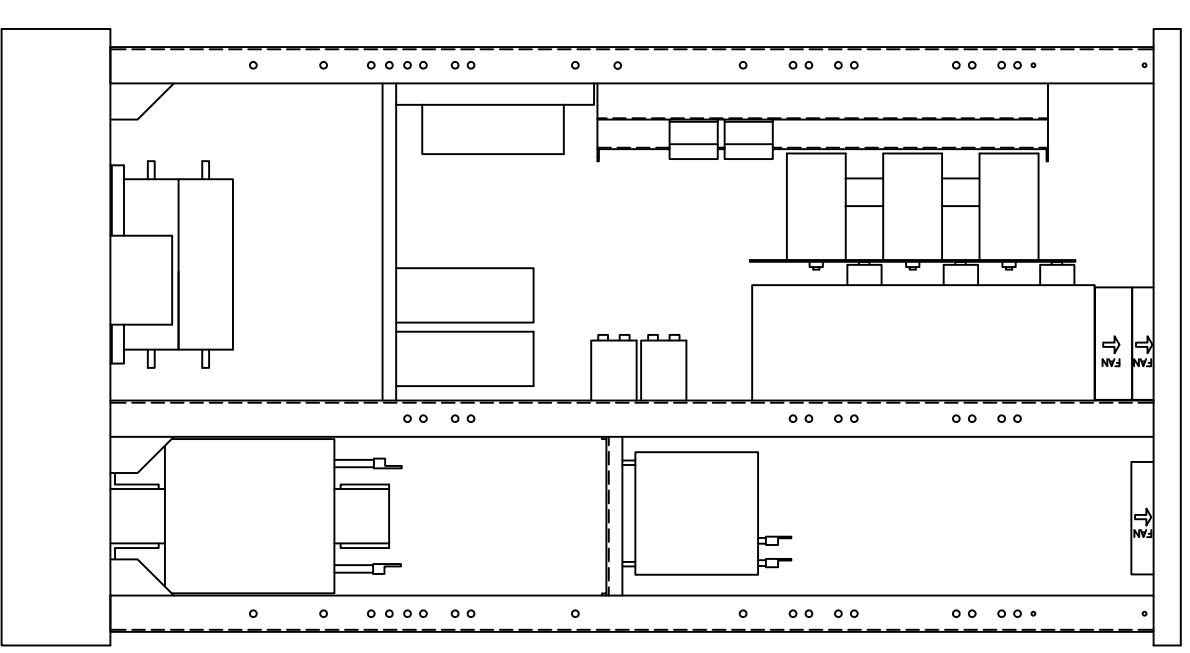
1



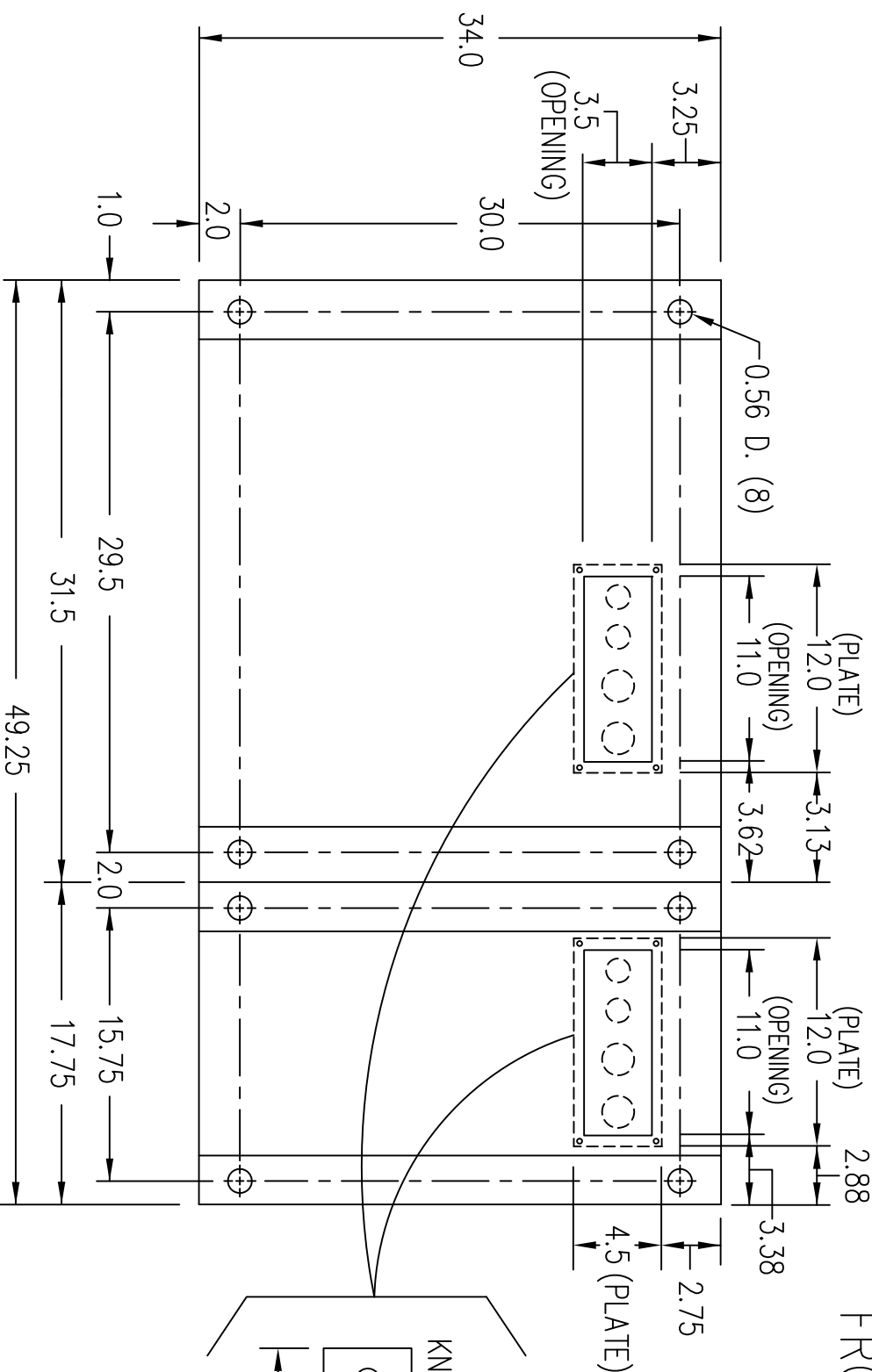
(VIEW FROM TOP OF CABINET)



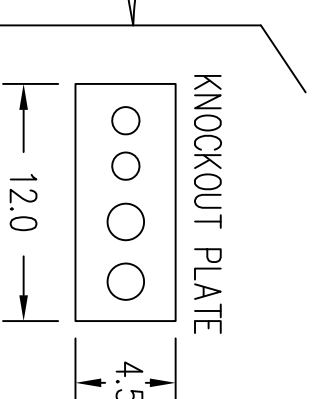
RIGHT SIDE



FRONT



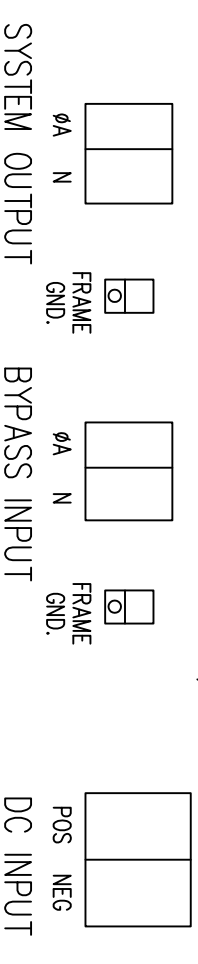
FRONT



TERMINATION CONFIGURATION (BOTTOM, FRONT)

TERMINAL BLOCK CAPACITY: (2) 500 MCM TO (2) 4 GA.

GROUND LUG CAPACITY: 14 GA. TO 1/0 GA.



NOTE: ALL DIMENSIONS ARE IN INCHES UNLESS OTHERWISE SPECIFIED.

(VIEW FROM BOTTOM OF CABINET)

**LTI Power Systems, Inc.**

50KVA ASSEMBLY

LTI-ProUPS

REV. 1

