

TO REMOVE FRONT FILTER, REMOVE TOP SCREW FROM EACH SIDE BRACKET. ROTATE BRACKETS AWAY FROM FILTER, THEN SLIDE FILTER UP AND REPLACE AS NECESSARY.

Notes: Unless otherwise specified, dimensions are in inches. Dimensions within brackets [] are in millimeters.
 Recommended clearance for serviceability is 36" [914] in the front and 6" [152] on the remaining sides.

LTI Power Systems, Inc.

ProUPS B2050 ENCLOSURE
 60KVA

60KVA WEIGHT W/SKID: 3200 LBS. (1440 kg)

LTI-ProUPS

TEL. (440) 327-5050

10800 Middle Ave. Elyria, Ohio 44035

CAD DWG NAME: B2050CAB_60KVA_FILTER

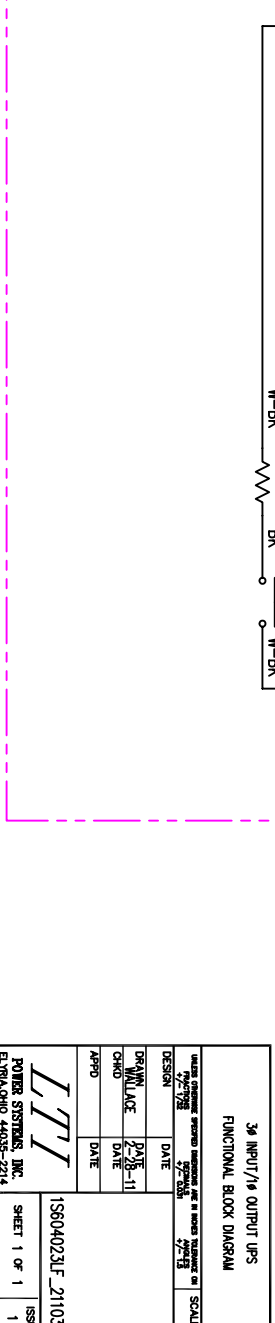
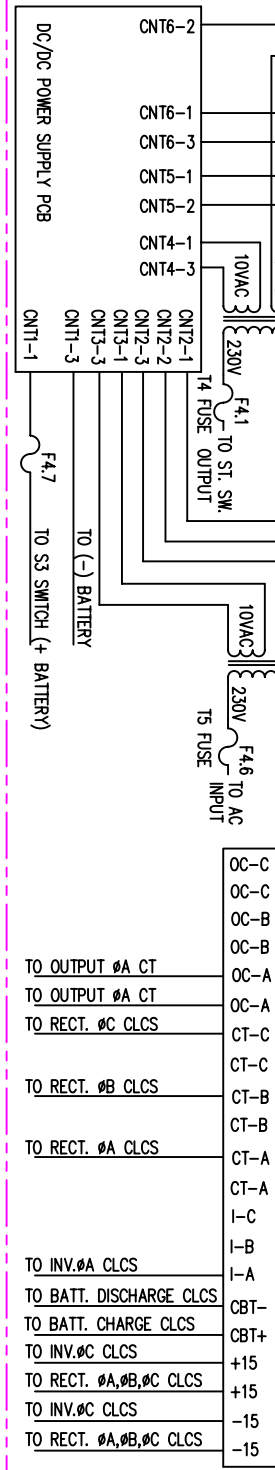
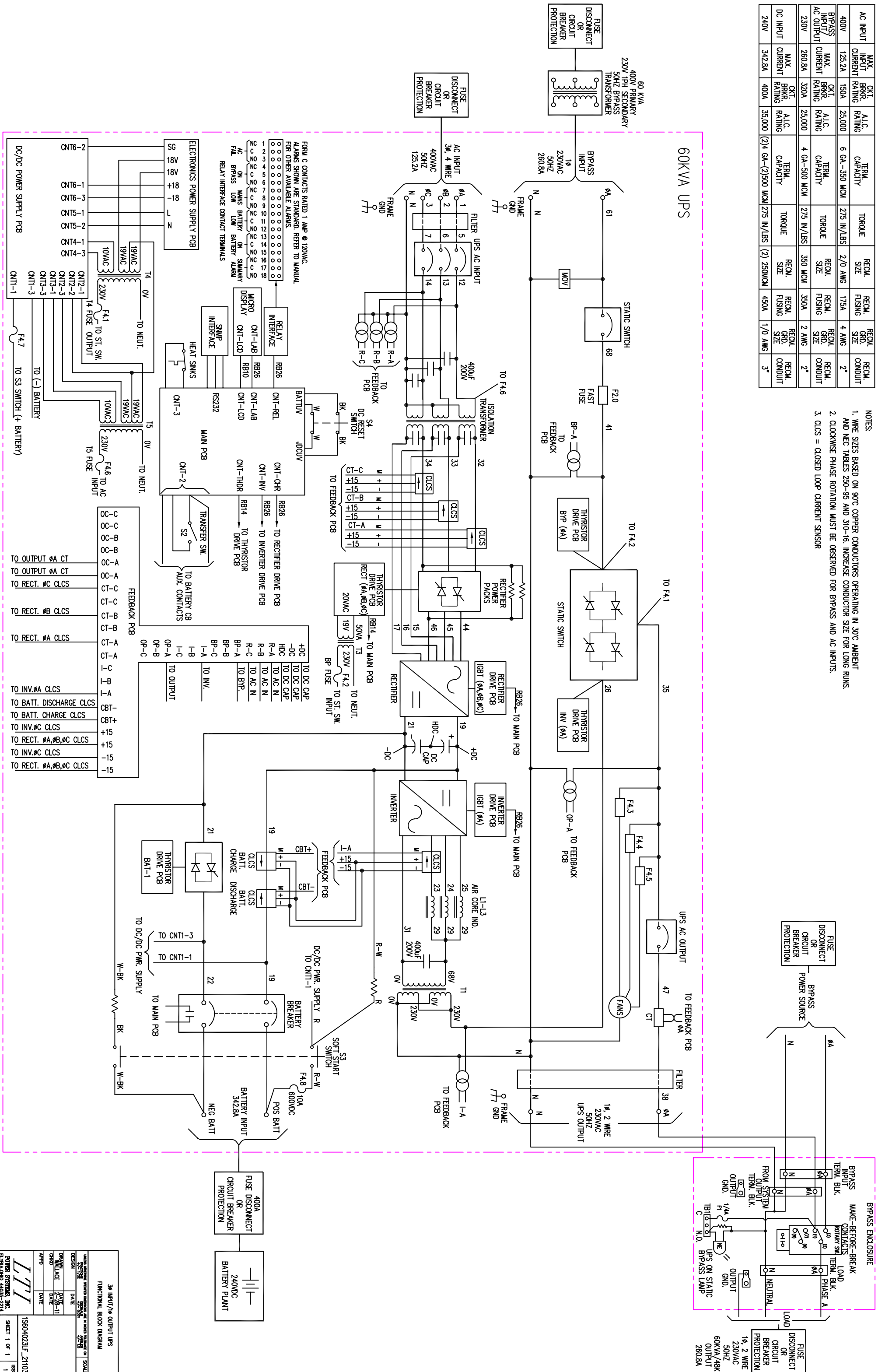
REV.

1

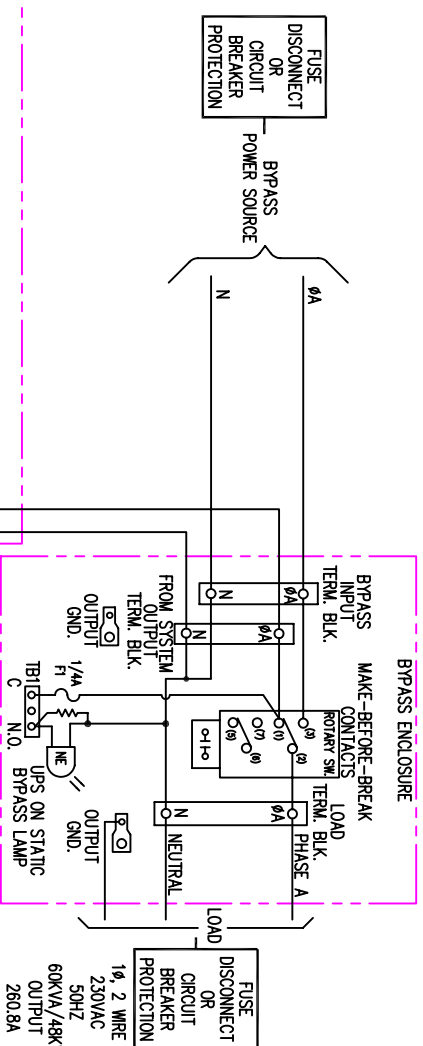
AC INPUT	MAX. INPUT CURRENT	CT1 BRKR. RATING	A.I.C. RATING	TERN. CAPACITY	TORQUE	RECM. SIZE	RECM. FUSING	RECM. GRD. CONDUIT
400V	125.2A	150A	25,000	6 GA-350 MCM	275 IN/LBS	2/0 AWG	175A	2"
BYPASS INPUT/AC OUTPUT	MAX. CURRENT	CT BRKR. RATING	A.I.C. RATING	TERN. CAPACITY	TORQUE	RECM. FUSING	RECM. GRD. CONDUIT	
230V	260.8A	320A	25,000	4 GA-500 MCM	275 IN/LBS	350A	2 AWG	2"
DC INPUT	MAX. CURRENT	CT1 BRKR. RATING	A.I.C. RATING	TERN. CAPACITY	TORQUE	RECM. FUSING	RECM. GRD. CONDUIT	
240V	342.8A	400A	35,000	(2) 1/4 GA-(2)500 MCM	275 IN/LBS	(2) 250MCM	450A	1/0 AWG

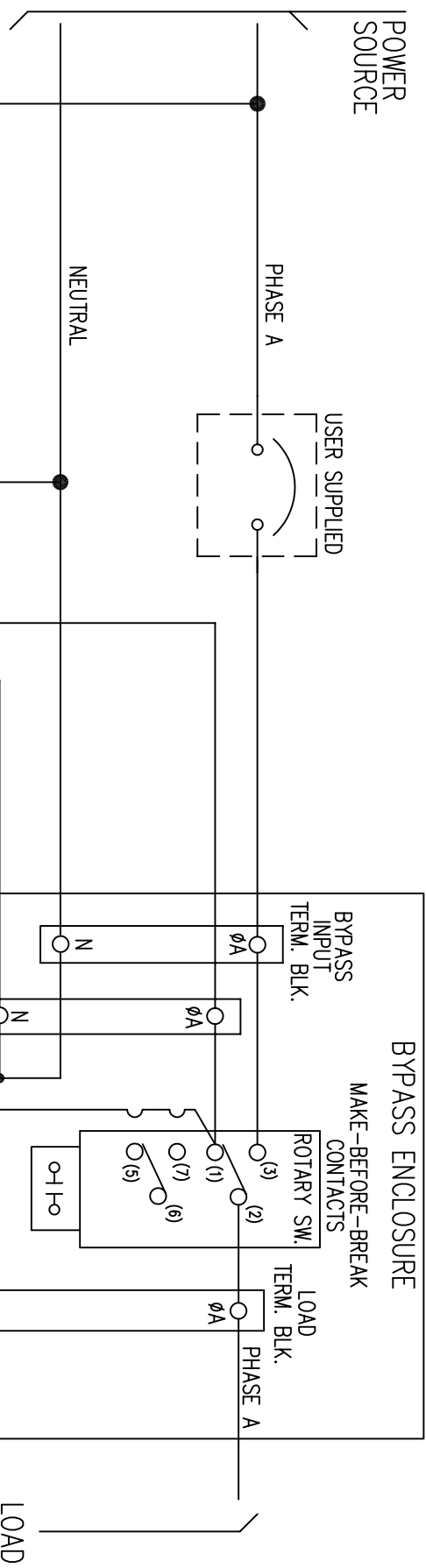
- NOTES:
1. WIRE SIZES BASED ON 90°C COPPER CONDUCTORS OPERATING IN 30°C AMBIENT AND NEC TABLES 250-95 AND 310-16. INCREASE CONDUCTOR SIZE FOR LONG RUNS.
 2. CLOCKWISE PHASE ROTATION MUST BE OBSERVED FOR BYPASS AND AC INPUTS.
 3. CLCS = CLOSED LOOP CURRENT SENSOR

60KVA UPS

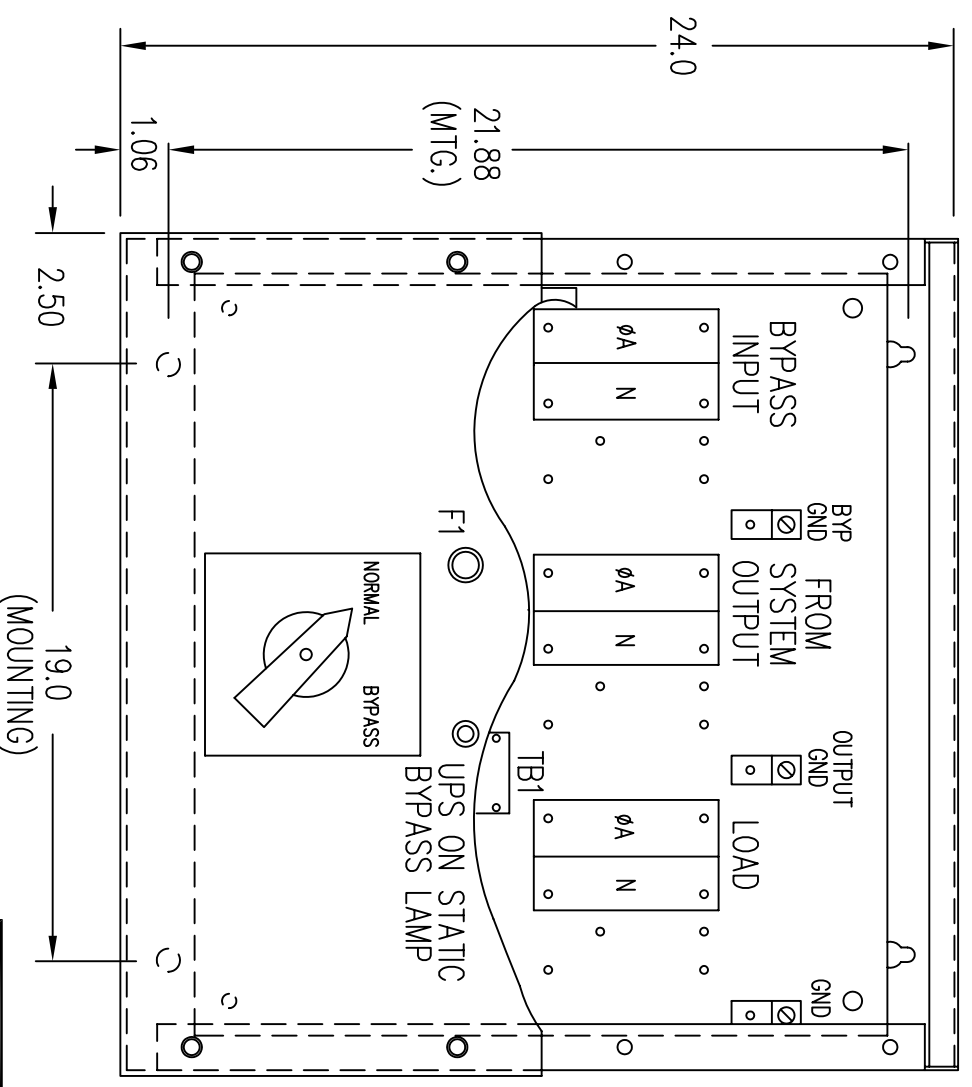
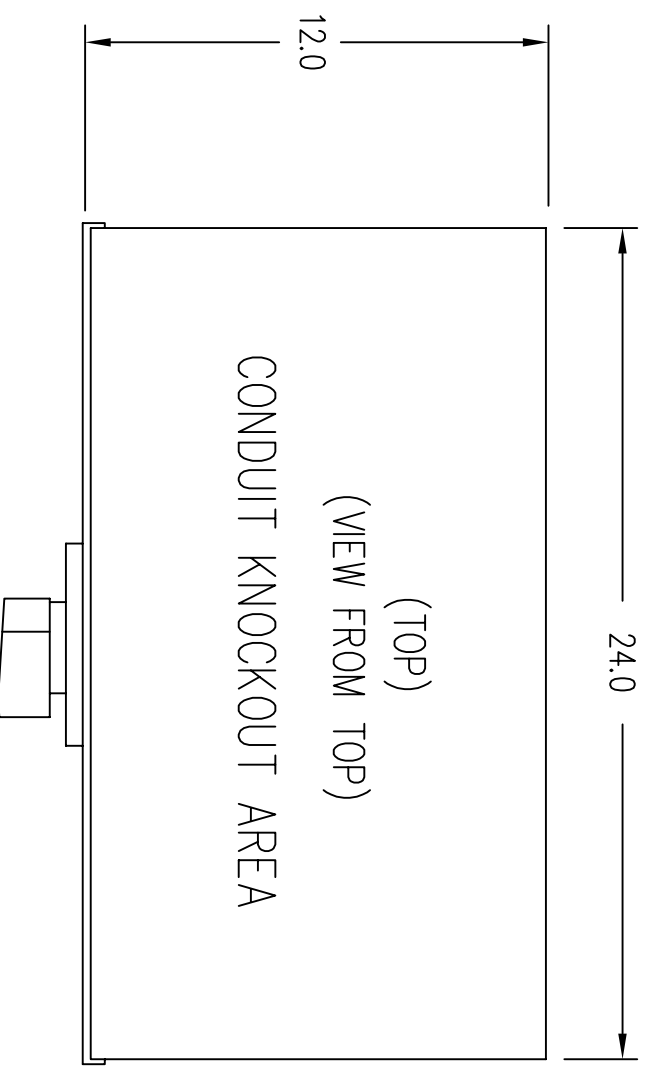


3Ø INPUT/Ø OUTPUT UPS	DATE	156040231E_211039
FUNCTIONAL BLOCK DIAGRAM	DESIGN	156040231E_211039
	DATE	156040231E_211039
	SCALE	1
	ISSUE	1





NOTE: TERMINAL CAPACITY: 500 MCM TO 4 AWG
 TORQUE: 275 IN./LBS.
 GROUND LUG CAPACITY: 1/0 TO 14 AWG
 TORQUE: 50 IN./LBS.



NOTES:

1. OBSERVE ALL PHASING WHEN CONNECTING EXTERNAL SWITCH CONTACTS.
2. EXTERNAL ROTARY SWITCH ENCLOSURE: NEMA TYPE 1, 24"L x 24"W x 12"D.
3. DO NOT OPERATE THE ROTARY SWITCH TO BYPASS POSITION WITH THE "UPS" DE-ENERGIZED.
4. NORMAL- THE UPS SUPPLYING THE LOAD.
 BYPASS- THE HARD BYPASS SOURCE SUPPLYING THE LOAD.
5. REMOVE BLANK COVER PANEL TO ACCESS TERMINAL CONNECTIONS.

MOUNTING HOLES LOCATED ON BOTTOM SURFACE OF ENCLOSURE AND ARE DESIGNED FOR 5/16 HARDWARE.

BYPASS ENCLOSURE (FRONT-VIEW FROM FRONT) (BLANK COVER PANEL REMOVED)

400A SINGLE PHASE OUTPUT PROUPS SERIES EXTERNAL MAINTENANCE BYPASS SWITCH			
DESIGN	DATE		
DRAWN	DATE		
CHKD	DATE		
APPD	DATE		
REV	DATE		
IC4232-913		SHEET 1 OF 1	
		ISSUE 1	