

Notes: Unless otherwise specified, dimensions are in inches. Dimensions within brackets [] are in millimeters.
 Recommended clearance for serviceability is 36" [914] in the front and 6" [152] on the remaining sides.

LTI Power Systems, Inc.

TEL. (440) 327-5050

10800 Middle Ave. Elyria, Ohio 44035

ProUPS B2050 ENCLOSURE
 60KVA

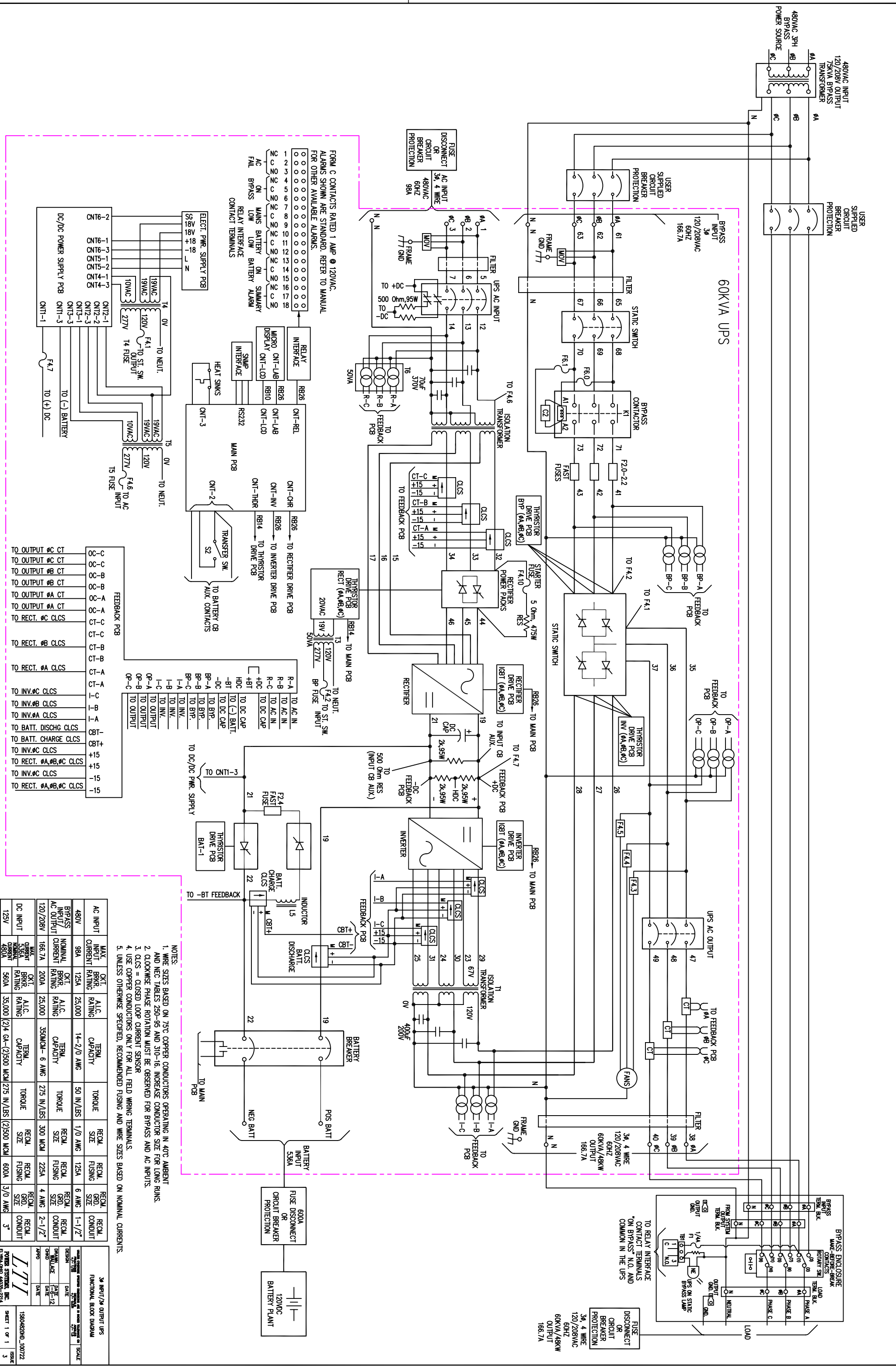
60KVA WEIGHT W/SKID: 3200 LBS. (1440 kg)

LTI-ProUPS

CAD DWG NAME: B2050CAB_604820HD_461D

REV.

1



FORM C CONTACTS RATED 1 AMP @ 120VAC.
ALARMS SHOWN ARE STANDARD. REFER TO MANUAL
FOR OTHER AVAILABLE ALARMS.

AC ON MAINS BATTERY ON SUMMARY
LOW BATTERY ALARM

RELAY INTERFACE
CONTACT TERMINALS

ELECT. PMR SUPPLY PCB

TO NEUT.
TO ST. SW.
TO AC INPUT

TO (-) BATTERY
TO (+) DC

TO OUTPUT #C CT
TO OUTPUT #B CT
TO OUTPUT #A CT
TO RECT. #C CLCS
TO RECT. #B CLCS
TO RECT. #A CLCS
TO INV.#C CLCS
TO INV.#B CLCS
TO INV.#A CLCS
TO BATT. DISCHG CLCS
TO BATT. CHARGE CLCS
TO RECT. #A,#B,#C CLCS
TO INV.#C CLCS
TO INV.#B CLCS
TO INV.#A CLCS

DC INPUT	MAX. CURRENT	AC INPUT	MAX. INPUT CURRENT	AC OUTPUT	NOMINAL CURRENT	BYPASS AC OUTPUT	MAX. CURRENT
125V	535A	480V	98A	120/208V	166.7A	120/208V	480A

DC INPUT	MAX. INPUT CURRENT	AC INPUT	MAX. INPUT CURRENT	AC OUTPUT	NOMINAL CURRENT	BYPASS AC OUTPUT	MAX. CURRENT
125V	535A	480V	98A	120/208V	166.7A	120/208V	480A

NOTES:
1. WIRE SIZES BASED ON 75°C COPPER CONDUCTORS OPERATING IN 40°C AMBIENT AND NEC TABLES 250-95 AND 310-16. INCREASE CONDUCTOR SIZE FOR LONG RUNS.
2. CLOCKWISE PHASE ROTATION MUST BE OBSERVED FOR BYPASS AND AC INPUTS.
3. CLCS = CLOSED LOOP CURRENT SENSOR
4. USE COPPER CONDUCTORS ONLY FOR ALL FIELD WIRING TERMINALS.
5. UNLESS OTHERWISE SPECIFIED, RECOMMENDED FUSING AND WIRE SIZES BASED ON NOMINAL CURRENTS.