

TO REMOVE FRONT FILTER, REMOVE TOP SCREW FROM EACH SIDE BRACKET. ROTATE BRACKETS AWAY FROM FILTER, THEN SLIDE FILTER UP AND REPLACE AS NECESSARY.

Notes: Unless otherwise specified, dimensions are in inches. Dimensions within brackets [ ] are in millimeters.

Recommended clearance for serviceability is 36" [914] in the front and 6" [152] on the remaining sides.

NOTE: BYPASS CABINET TO BE INSTALLED SO THAT LEFT SIDE IS BUTTED UP TO RIGHT SIDE OF THE UPS SYSTEM. UPS RIGHT SIDE PANEL AND BYPASS CABINET'S LEFT SIDE PANEL HAVE BEEN REMOVED SO THAT INTERCONNECT WIRING CAN BE ROUTED FROM THE UPS TO APPROPRIATE CONNECTIONS IN THE BYPASS CABINET. REFER TO ONE LINE DRAWING FOR EXACT CONNECTION POINTS BEFORE INSTALLING. HOLES ARE PROVIDED ON EACH CABINET BASE SIDE FOR THE PURPOSE OF BOLTING CABINETS TOGETHER IF SO DESIRED.

**LTI Power Systems, Inc.**

ProUPS B2050 ENCLOSURE  
60KVA

60KVA WEIGHT W/SKID: 3200 LBS. (1440 kg)

LTI-ProUPS

REV.

TEL. (440) 327-5050

10800 Middle Ave. Elyria, Ohio 44035

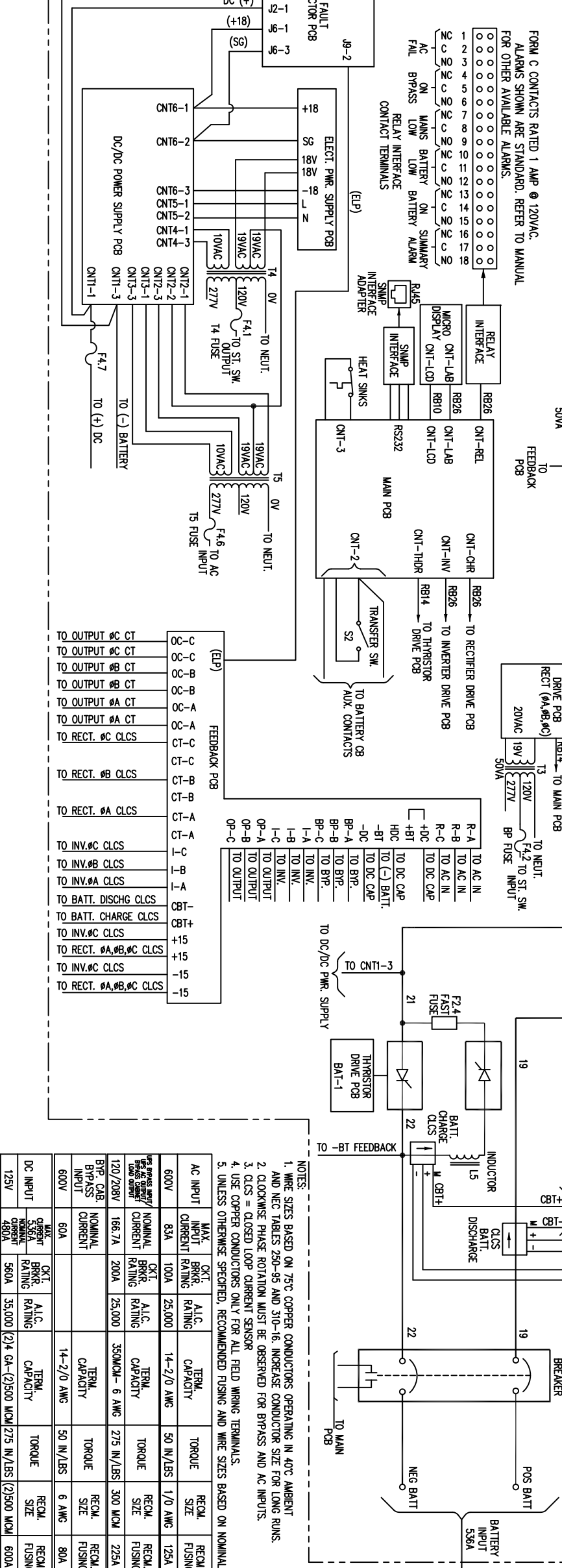
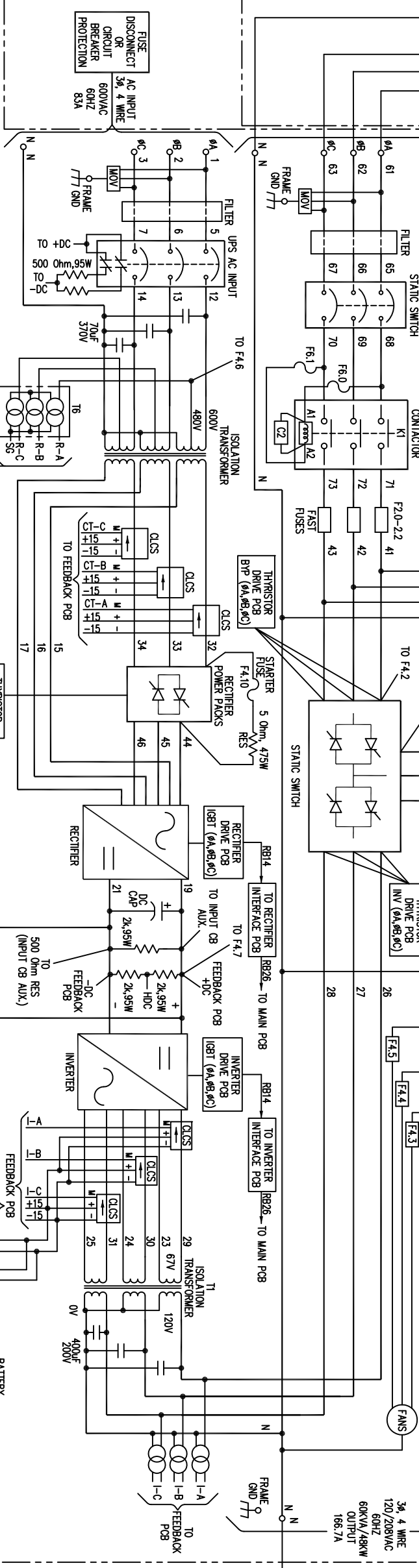
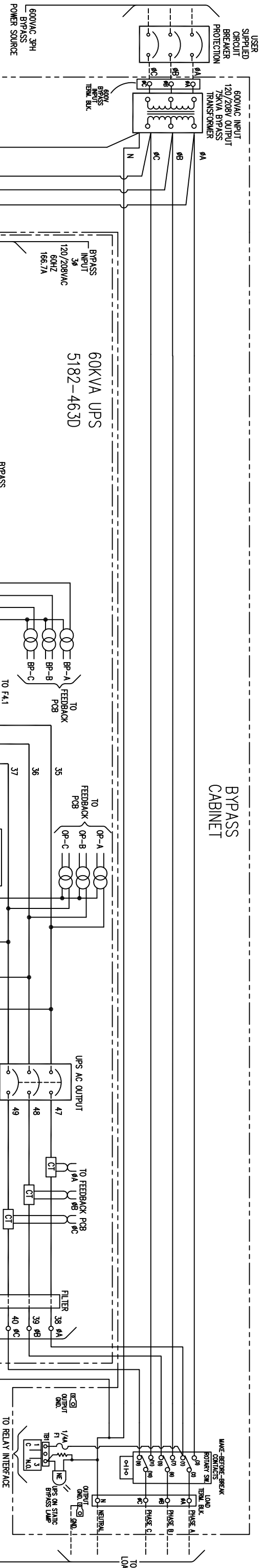
CAD DWG NAME: B2050CAB\_606020HD\_463D\_140847

1





BYPASS CABINET



FORM C CONTACTS RATED 1 AMP @ 120VAC.  
ALARMS SHOWN ARE STANDARD. REFER TO MANUAL  
FOR OTHER AVAILABLE ALARMS.

- TO OUTPUT #C CT  
TO OUTPUT #B CT  
TO OUTPUT #A CT  
TO RECT. #C CLCS  
TO RECT. #B CLCS  
TO RECT. #A CLCS  
TO INV.#C CLCS  
TO INV.#B CLCS  
TO INV.#A CLCS  
TO BATT. DISCHG CLCS  
TO BATT. CHARGE CLCS  
TO INV.#C CLCS  
TO RECT. #A,#B,#C CLCS  
TO INV.#C CLCS  
TO RECT. #A,#B,#C CLCS

NOTES:

1. WIRE SIZES BASED ON 75°C COPPER CONDUCTORS OPERATING IN 40°C AMBIENT AND NEC TABLES 250-95 AND 310-16. INCREASE CONDUCTOR SIZE FOR LONG RUNS.
2. CLOCKWISE PHASE ROTATION MUST BE OBSERVED FOR BYPASS AND AC INPUTS.
3. CLCS = CLOSED LOOP CURRENT SENSOR
4. USE COPPER CONDUCTORS ONLY FOR ALL FIELD WIRING TERMINALS.
5. UNLESS OTHERWISE SPECIFIED, RECOMMENDED FUSING AND WIRE SIZES BASED ON NOMINAL CURRENTS.

| DC INPUT | MAX. CURRENT | DC INPUT | MAX. CURRENT | DC INPUT | MAX. CURRENT |
|----------|--------------|----------|--------------|----------|--------------|
| 125V     | 535A         | 250V     | 267A         | 375V     | 178A         |
|          | 480A         |          | 200A         |          | 133A         |

| DC INPUT | MAX. CURRENT | DC INPUT | MAX. CURRENT | DC INPUT | MAX. CURRENT |
|----------|--------------|----------|--------------|----------|--------------|
| 125V     | 535A         | 250V     | 267A         | 375V     | 178A         |
|          | 480A         |          | 200A         |          | 133A         |